

Case No. 18RZ001

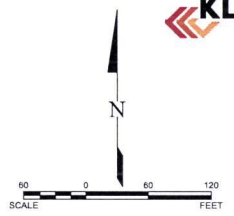
Legal Description:

Lots 2 thru 7 of Tract B of Meadowwood Subdivision, Lot 1 of Tract E of Meadowwood Subdivision and Lot 1 of GFP Subdivision, all located in Section 33, T2N, R7E, BHM, Rapid City, Pennington County, South Dakota



510 19th Street, Suite 202
Rapid City, SD 57701
phone - 605.394.8832
www.jlgarchitects.com
copyright © 2017

LEGAL DESCRIPTION
LOTS 2-7 OF TRACT B OF MEADOWWOOD SUBDIVISION, LOT 1 OF TRACT E OF MEADOWWOOD SUBDIVISION, & LOT 1 OF GFP SUBDIVISION, SECTION 33, T. 2 N., R. 7 E. BHM, RAPID CITY, PENNINGTON COUNTY, SOUTH DAKOTA

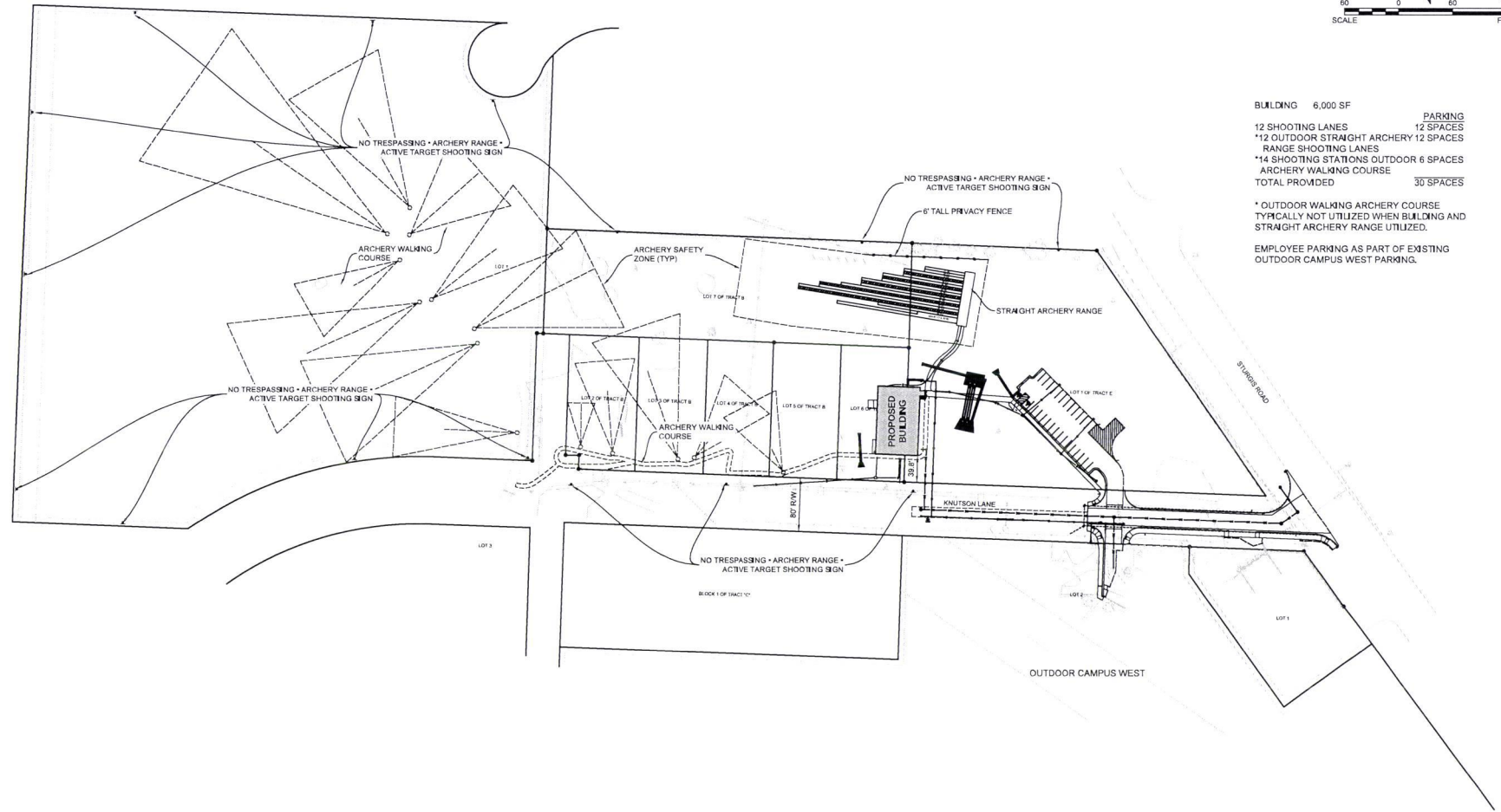


PRELIMINARY
NOT FOR CONSTRUCTION

REVISION SCHEDULE		
NO.	DESCRIPTION	DATE

BUILDING 6,000 SF
PARKING
 12 SHOOTING LANES 12 SPACES
 *12 OUTDOOR STRAIGHT ARCHERY 12 SPACES
 RANGE SHOOTING LANES
 *14 SHOOTING STATIONS OUTDOOR 6 SPACES
 ARCHERY WALKING COURSE
 TOTAL PROVIDED 30 SPACES

* OUTDOOR WALKING ARCHERY COURSE
 TYPICALLY NOT UTILIZED WHEN BUILDING AND STRAIGHT ARCHERY RANGE UTILIZED.
 EMPLOYEE PARKING AS PART OF EXISTING OUTDOOR CAMPUS WEST PARKING.



OSE# G2117--10X

JLG ARCHITECTS
OCW HUNTER ED BLDG & ARCHERY PARK
 RAPID CITY, SD

DATE: 02/06/2018
 PHASE: CONSTRUCTION DOCUMENTS
 PROJECT: 10617142
 SHEET: **C-112**
 OVERALL SITE PLAN