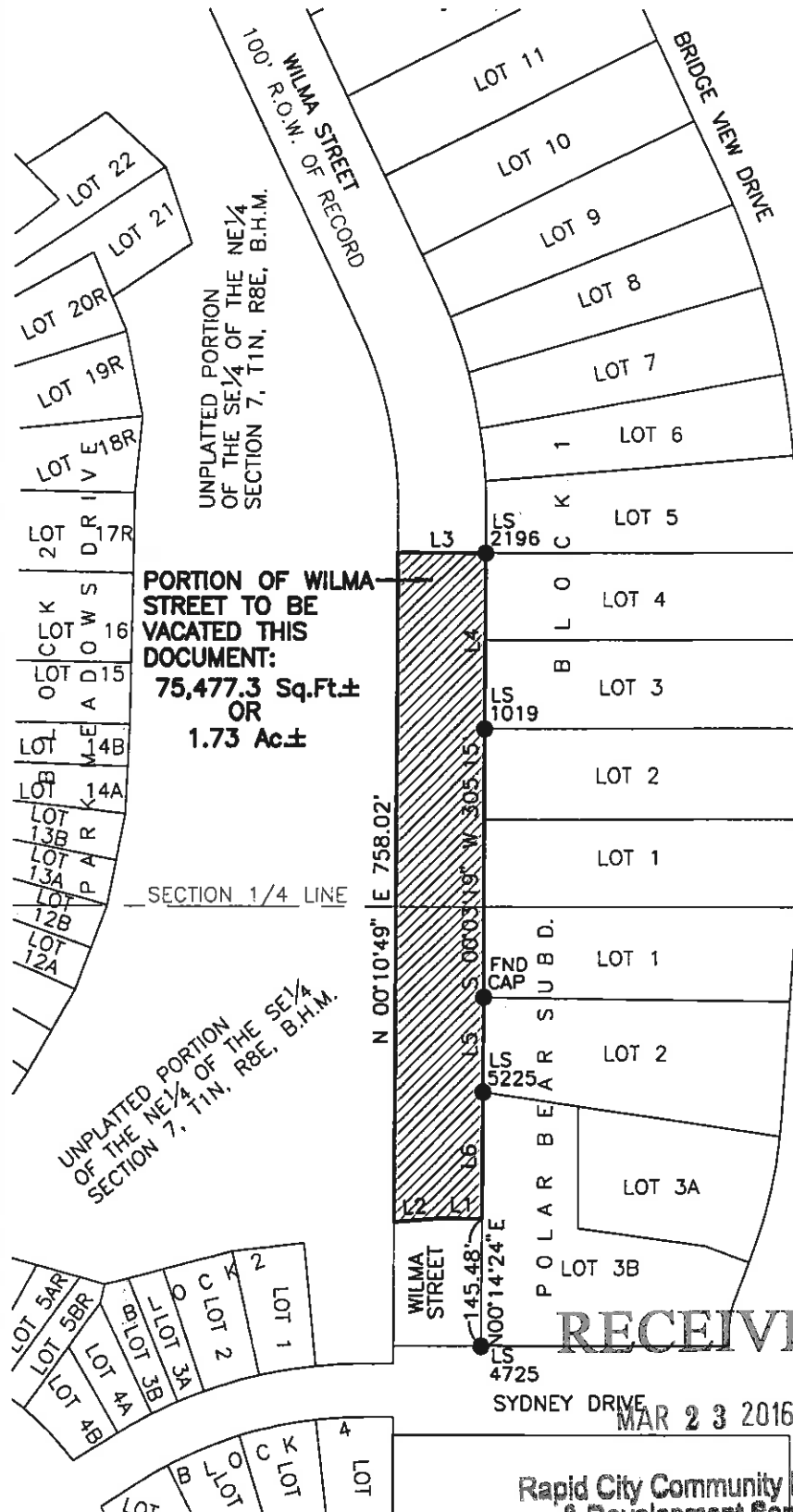


EXHIBIT 'A'

VACATION OF A PORTION OF WILMA STREET RIGHT-OF-WAY

LYING IN THE NE¹/₄ OF THE SE¹/₄ AND IN THE SE¹/₄ OF THE NE¹/₄, SECTION 7, T1N, R8E AND ADJOINING LOTS 1, 2, 3, AND 4 OF BLOCK 1 IN THE NE¹/₄ OF SECTION 7, T1N, R8E, AND ADJOINING LOTS 1 AND 2, AND LOT 3B OF POLAR BEAR SUBDIVISION, ALL LOCATED IN SECTION 7, T1N, R8E, B.H.M., RAPID CITY, PENNINGTON COUNTY, SOUTH DAKOTA



| LINE | BEARING | DISTANCE |
|------|---------------|----------|
| L1 | N 89°45'36" W | 50.11' |
| L2 | S 85°21'46" W | 50.07' |
| L3 | S 89°43'14" E | 100.00' |
| L4 | S 00°16'46" W | 199.66' |
| L5 | S 00°16'13" W | 106.94' |
| L6 | S 00°14'25" W | 141.95' |



MARCH 22, 2016



SCALE: 1" = 200'

RECEIVED

MAR 23 2016

Rapid City Community Planning & Development Services

