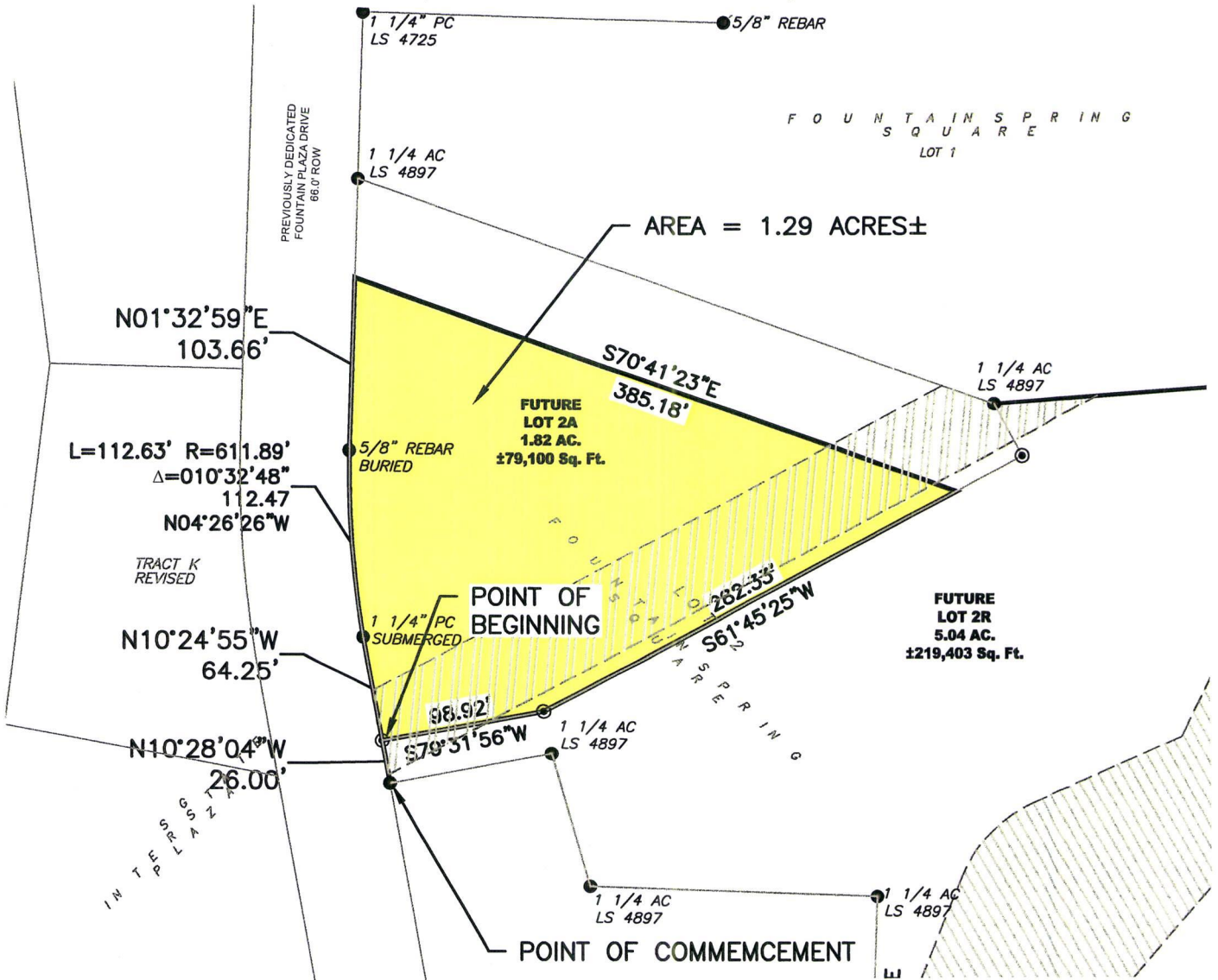


Case No. 17RZ033

**Legal Description:**

Formerly a portion of Lot 2 of Fountain Springs Square Subdivision located in the N½ of the SE¼ of Section 27, T2N, R7E, BHM, Rapid City, Pennington County, South Dakota. More fully described as follows: Commencing at the NW corner of Lot 3 of Fountain Springs Square Subdivision, located in the N½ of the SE¼, Section 27, T2N, R7E, BHM, Rapid City, Pennington County, South Dakota; thence N10°28'04"W, a distance of 26.00 feet, to the point of beginning; Thence first course: N10°24'55"W, a distance of 64.25 feet; Thence second course: on a curve turning to the right with an arc length of 112.63 feet, with a radius of 611.89 feet, with a chord bearing of N04°26'26"W, with a chord length of 112.47 feet; Thence third course: N01°32'59"E, a distance of 103.66 feet; Thence fourth course: S70°41'23"E, a distance of 385.18 feet; Thence fifth course: S61°45'25"W, a distance of 282.33 feet; Thence sixth course: S79°31'56"W, a distance of 98.92 feet, to the point of beginning

**REZONE EXHIBIT**  
**GENERAL AGRICULTURE DISTRICT (GAD) TO GENERAL COMMERCIAL (GC)**  
**FOUNTAIN SPRINGS SQUARE SUBDIVISION**  
 (formerly a portion of Lot 2 of Fountain Springs Square Subdivision )  
**LOCATED IN THE N1/2 OF THE SE1/4 OF SECTION 27, T2N, R7E, B.H.M.,**  
**RAPID CITY, PENNINGTON COUNTY, SOUTH DAKOTA.**



RECEIVED

SEP 29 2017

RAPID CITY COMMUNITY PLANNING  
& DEVELOPMENT SERVICES



**PRELIMINARY  
FOR REVIEW ONLY**

