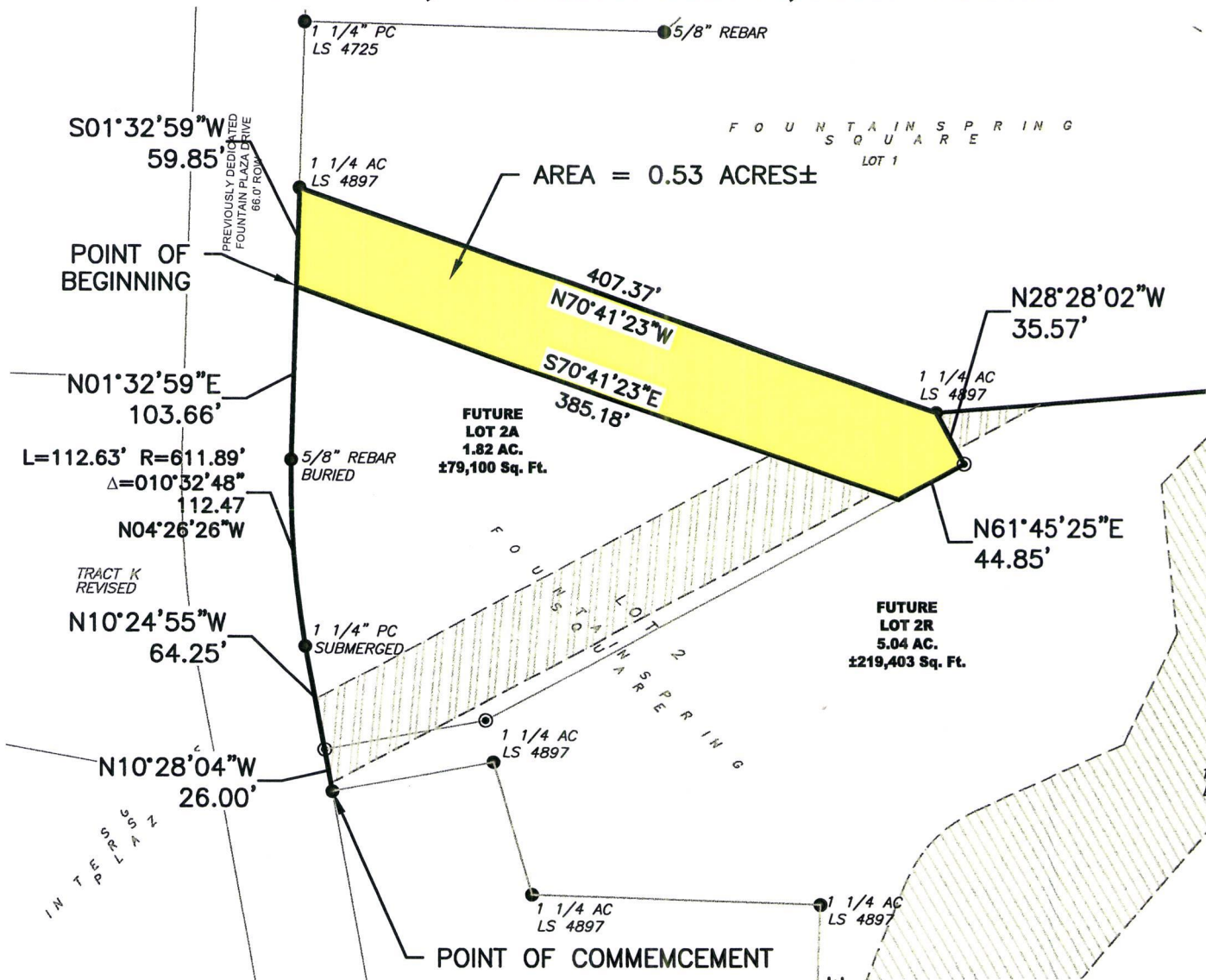


Case No. 17RZ032

**Legal Description:**

Formerly a portion of Lot 2 of Fountain Springs Square Subdivision located in the N½ of the SE¼ of Section 27, T2N, R7E, BHM, Rapid City, Pennington County, South Dakota, more fully described as follows: Commencing at the NW corner of Lot 3 of Fountain Springs Square Subdivision, located in the N½ of the SE¼, Section 27, T2N, R7E, BHM, Rapid City, Pennington County, South Dakota; Thence N10°28'04"W, a distance of 26.00 feet; thence N10°24'55"W, a distance of 64.25 feet; thence curving to the right with an arc length of 112.63 feet, with a radius of 611.89 feet, with a chord bearing of N04°26'26"W, with a chord length of 112.47 feet; thence N01°32'59"E, a distance of 103.66 feet, to the point of beginning; Thence first course: S70°41'23"E, a distance of 385.18 feet; Thence second course: N61°45'25"E, a distance of 44.85 feet; Thence third course: N28°28'02"W, a distance of 35.57 feet; Thence fourth course: N70°41'23"W, a distance of 407.37 feet; Thence fifth course: S01°32'59"W, a distance of 59.85 feet, to the point of beginning

**REZONE EXHIBIT**  
**LIGHT INDUSTRIAL (LI) TO GENERAL COMMERCIAL (GC)**  
**FOUNTAIN SPRINGS SQUARE SUBDIVISION**  
 (formerly a portion of Lot 2 of Fountain Springs Square Subdivision )  
 LOCATED IN THE N1/2 OF THE SE1/4 OF SECTION 27, T2N, R7E, B.H.M.,  
 RAPID CITY, PENNINGTON COUNTY, SOUTH DAKOTA.



RECEIVED

SEP 29 2017

RAPID CITY COMMUNITY PLANNING & DEVELOPMENT SERVICES



**PRELIMINARY FOR REVIEW ONLY**

