

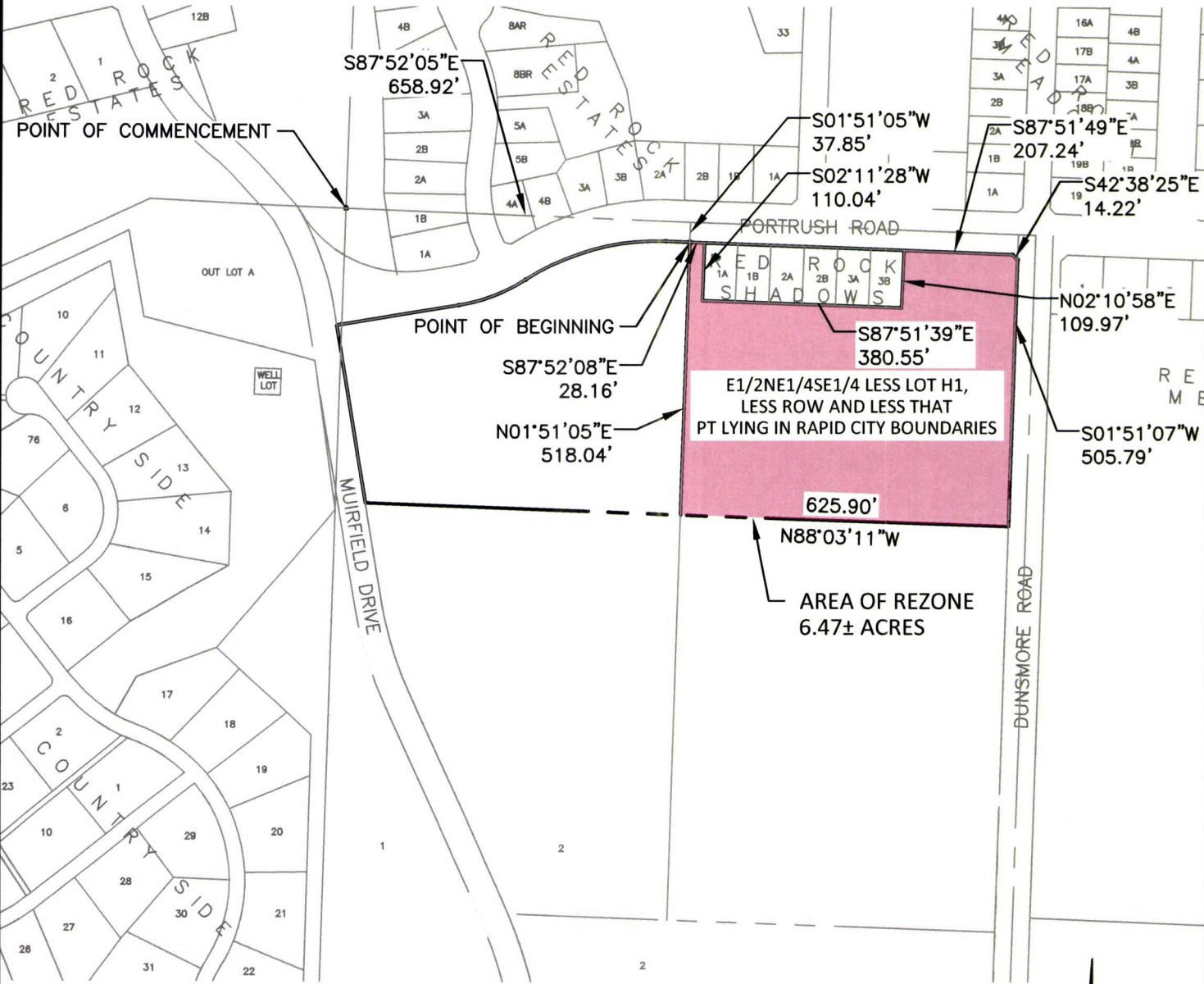
Case No. 17RZ030

Legal Description:

That portion of E1/2NE1/4SE1/4 less LOT H1, less row and less that part lying in Rapid City boundaries located in Section 29, T1N, R7E, BHM, Rapid City, Pennington County, South Dakota. More fully described as follows: Commencing at the NW Corner of that part of W1/2NE1/4SE1/4 located N of Portrush Rd Less Red Rock Estates And Less ROW, located in Section 29, T1N, R7E, BHM, Rapid City, Pennington County, South Dakota; Thence S01°53'49"W, a distance of 220.31 feet; thence N80°34'53"E, a distance of 227.23 feet; thence curving to the left with an arc length of 137.68 feet, with a radius of 337.92 feet, with a chord bearing of N68°54'35"E, with a chord length of 136.73 feet; thence curving to the right with an arc length of 281.44 feet, with a radius of 461.88 feet, with a chord bearing of N74°41'40"E, with a chord length of 277.11 feet; thence S87°52'08"E, a distance of 45.55 feet, to the point of beginning; Thence first course: S87°52'08"E, a distance of 28.16 feet; Thence second course: S02°11'28"W, a distance of 110.04 feet; Thence third course: S87°51'39"E, a distance of 380.55 feet; Thence fourth course: N02°10'58"E, a distance of 109.97 feet; Thence fifth course: S87°51'49"E, a distance of 207.24 feet; Thence sixth course: S42°38'25"E, a distance of 14.22 feet; Thence seventh course: S01°51'07"W, a distance of 505.79 feet; Thence eighth course: N88°03'11"W, a distance of 625.90 feet; Thence ninth course: N01°51'05"E, a distance of 518.04 feet, to the point of beginning

REZONE EXHIBIT NO USE TO OFFICE COMMERCIAL

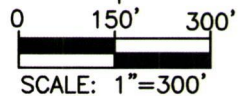
THAT PORTION OF E1/2NE1/4SE1/4 LESS LOT H1, LESS ROW AND LESS
THAT PT LYING IN RAPID CITY BOUNDARIES
LOCATED IN SECTION 29, T1N, R7E, BHM
PENNINGTON COUNTY, SOUTH DAKOTA



RECEIVED

SEP 21 2017

RAPID CITY COMMUNITY PLANNING
& DEVELOPMENT SERVICES



PRELIMINARY FOR REVIEW ONLY