

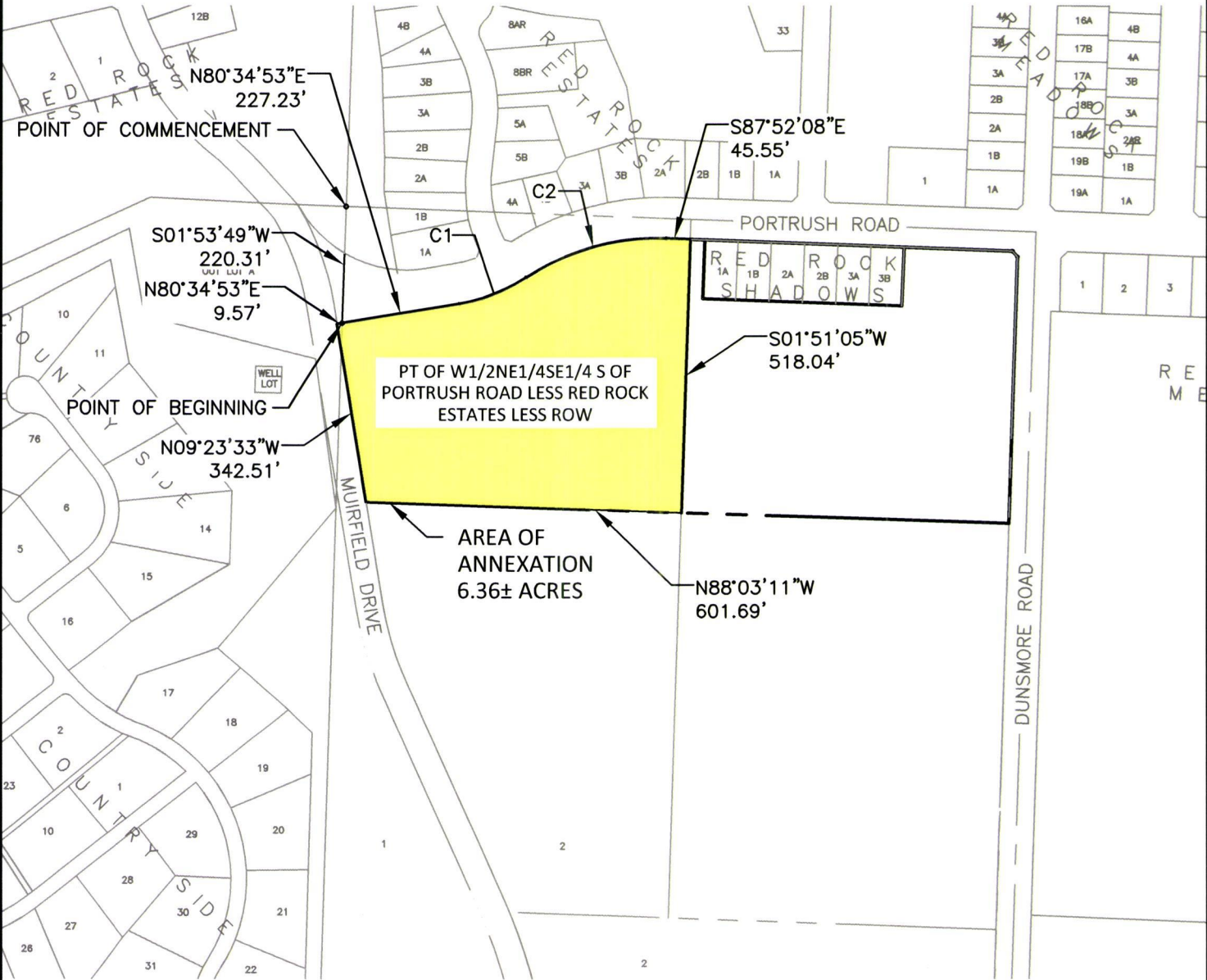
Case No. 17AN006

**Legal Description:**

That portion of W1/2NE1/4SE1/4 of Portrush Road; less Red Rock Estates less row; all located in Section 29, T1N, R7E, BHM, Rapid City, Pennington County, South Dakota. More fully described as follows: Commencing at the NW Corner of that part of W1/2NE1/4SE1/4 located N of Portrush Rd Less Red Rock Estates And Less ROW, located in Section 29, T1N, R7E, BHM, Rapid City, Pennington County, South Dakota; thence S01°53'49"W, a distance of 220.31 feet, to the point of beginning; Thence first course: N80°34'53"E, a distance of 227.23 feet; Thence second course: on a curve turning to the left with an arc length of 137.68 feet, with a radius of 337.92 feet, with a chord bearing of N68°54'35"E, with a chord length of 136.73 feet; Thence third course: on a curve turning to the right with an arc length of 281.44 feet, with a radius of 461.88 feet, with a chord bearing of N74°41'40"E, with a chord length of 277.11 feet; Thence fourth course: S87°52'08"E, a distance of 45.55 feet; Thence fifth course: S01°51'05"W, a distance of 518.04 feet; Thence sixth course: N88°03'11"W, a distance of 601.69 feet; Thence seventh course: N09°23'33"W, a distance of 342.51 feet; Thence eighth course: N80°34'53"E, a distance of 9.57 feet, to the point of beginning

**ANNEXATION EXHIBIT**

THAT PORTION OF W1/2NE1/4SE1/4 S OF PORTRUSH ROAD  
 LESS RED ROCK ESTATES LESS ROW  
 LOCATED IN SECTION 29, T1N, R7E, BHM  
 PENNINGTON COUNTY, SOUTH DAKOTA



**RECEIVED**

SEP 21 2017

RAPID CITY COMMUNITY PLANNING  
 & DEVELOPMENT SERVICES

CURVE TABLE					
CURVE	LENGTH	RADIUS	DELTA	CHORD BEARING	CHORD DISTANCE
C1	137.68	337.92	023°20'38"	N68°54'35"E	136.73
C2	281.44	461.88	034°54'45"	N74°41'40"E	277.11



0 150' 300'  
 SCALE: 1"=300'

# 17AN006

