

17TI002 Village on Monroe Housing Unit Design



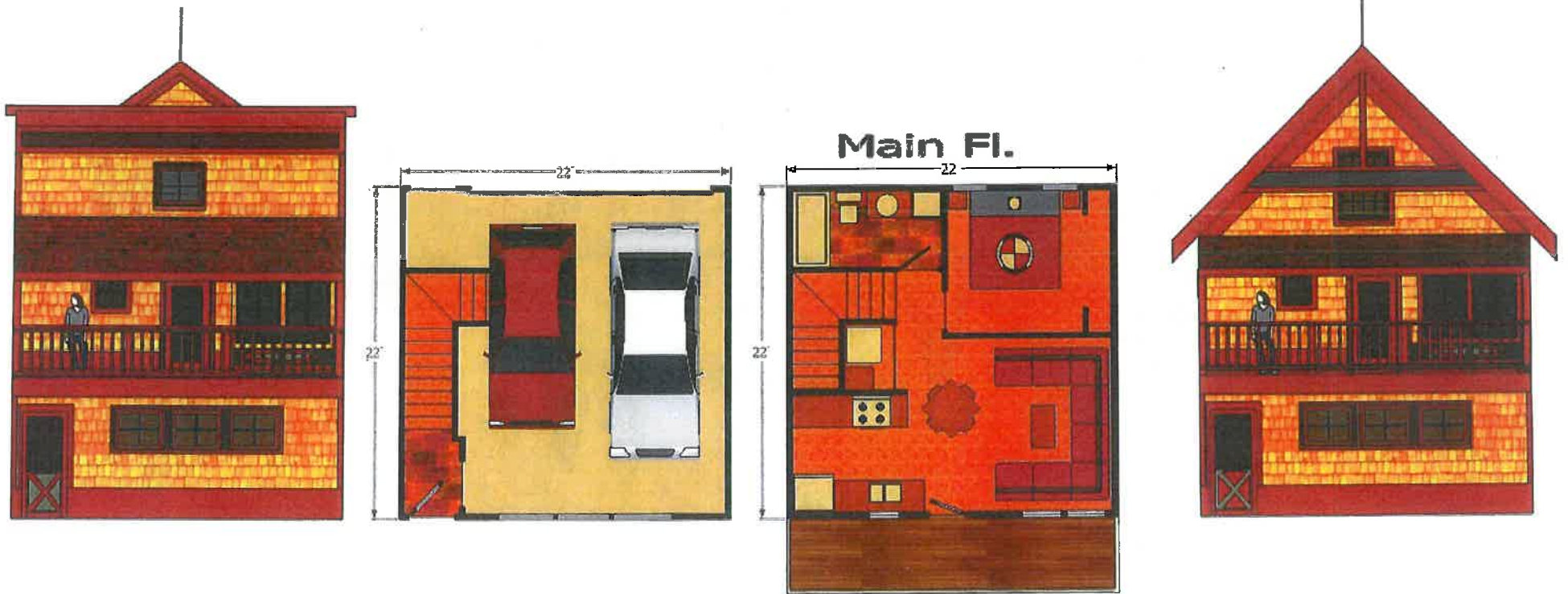
Monroe Street Elevation
Scale 1" = 10'

RECEIVED

MAR -2 2017

RAPID CITY COMMUNITY PLANNING
& DEVELOPMENT SERVICES

17TI002 Village on Monroe Housing Unit Design

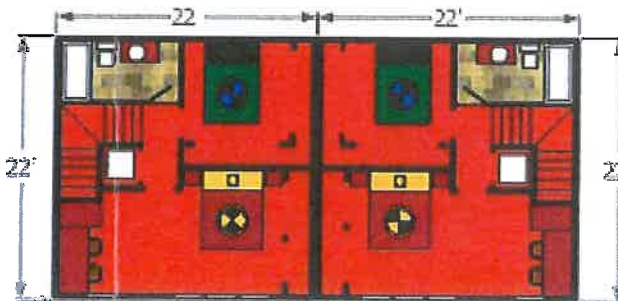
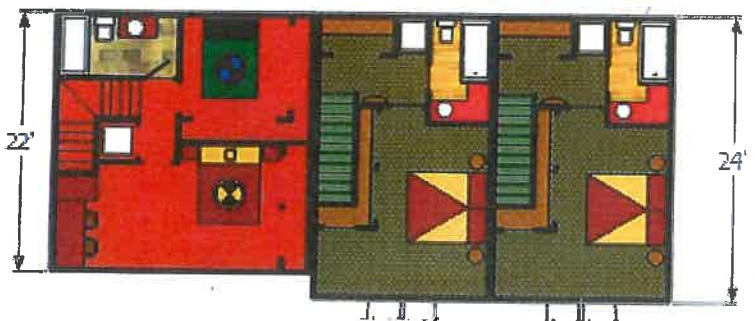
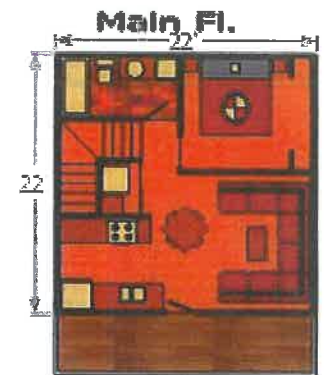
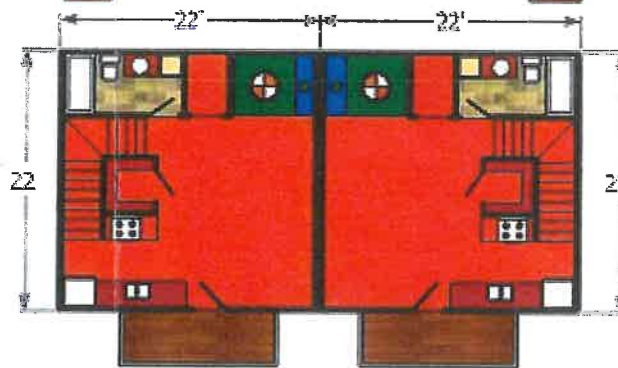
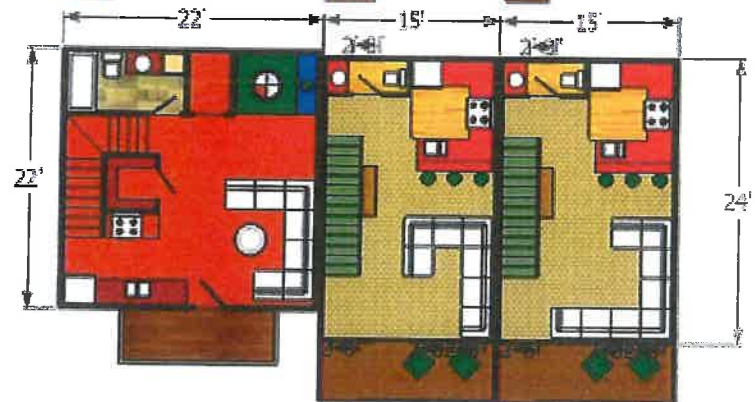
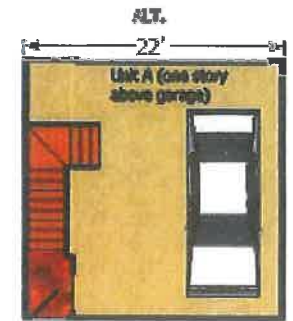
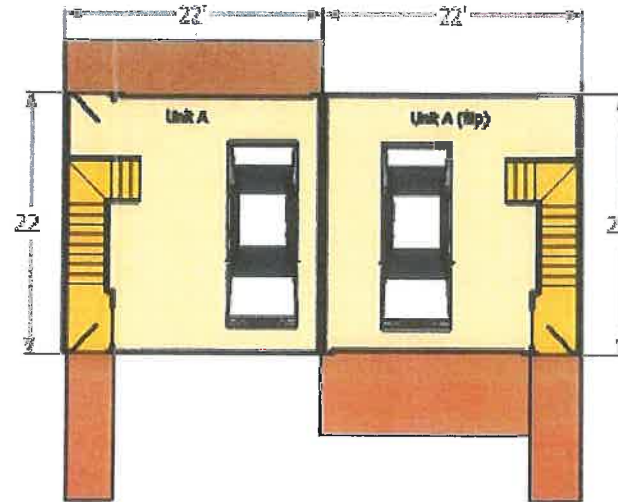
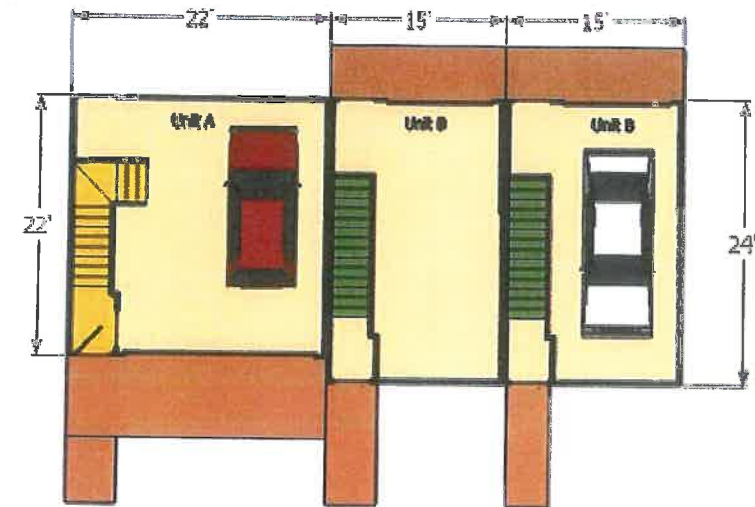


RECEIVED

MAR -2 2017

APID CITY COMMUNITY PLANNING
& DEVELOPMENT SERVICES

17TI002 Village on Monroe Housing Unit Design

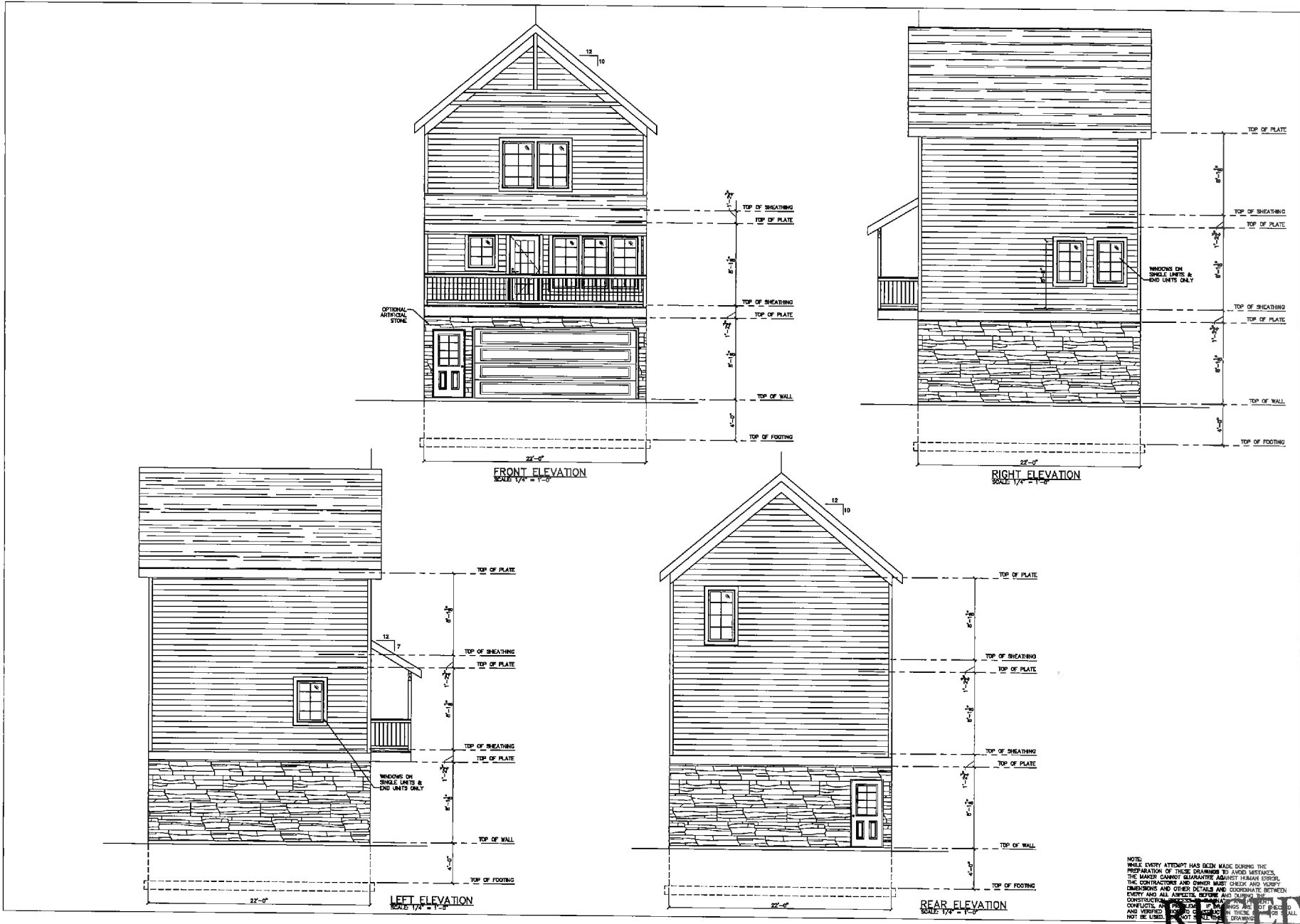


RECEIVED

MAR - 2 2017

APID CITY COMMUNITY PLANNING
& DEVELOPMENT SERVICES

17TI002 Village on Monroe Housing Unit Design



NOTE: WHILE EVERY ATTEMPT HAS BEEN MADE DURING THE PREPARATION OF THESE DRAWINGS TO AVOID MISTAKES, THE MAKER CANNOT GUARANTEE AGAINST HUMAN ERROR. THE CONTRACTOR AND OWNER MUST CHECK AND VERIFY DIMENSIONS AND OTHER DETAILS AND COORDINATE BETWEEN EVERY AND ALL ASPECTS BEFORE AND DURING THE CONSTRUCTION PROCESS. CONTRACTORS ARE RESPONSIBLE FOR VERIFYING ALL DIMENSIONS AND CONDITIONS IN THE FIELD AND VERIFYING THAT ALL CONDITIONS IN THESE DRAWINGS SHALL NOT BE USED.

DRAWING BOARD

809 SOUTH STREET
SUITE 101
RAPID CITY, SD 57701
PH: (605) 348-9701
e: drawingboard@villages.com

THIS DOCUMENT IS (ARE) THE PROPERTY OF THE DRAWING BOARD, INC. AND SHALL NOT BE USED FOR ANY OTHER PROJECT FOR ANY REASON WITHOUT THE WRITTEN CONSENT OF THE DRAWING BOARD, INC.

Project title:
VILLAGE ON MONROE
NeighborWorks

IF THIS PRINT IS NOT 24"x36" 11" IS NOT TO SCALE

Sheet title:
Unit 1 - ELEVATIONS

RAPID CITY, SOUTH DAKOTA

Date: 1/4/17
Designed:
Drawn: RUT
Checked:
Project Number: 16015
File Name: 16015a1.DWG

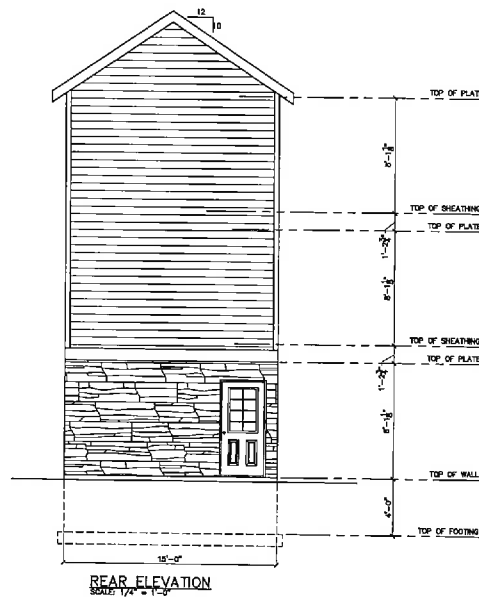
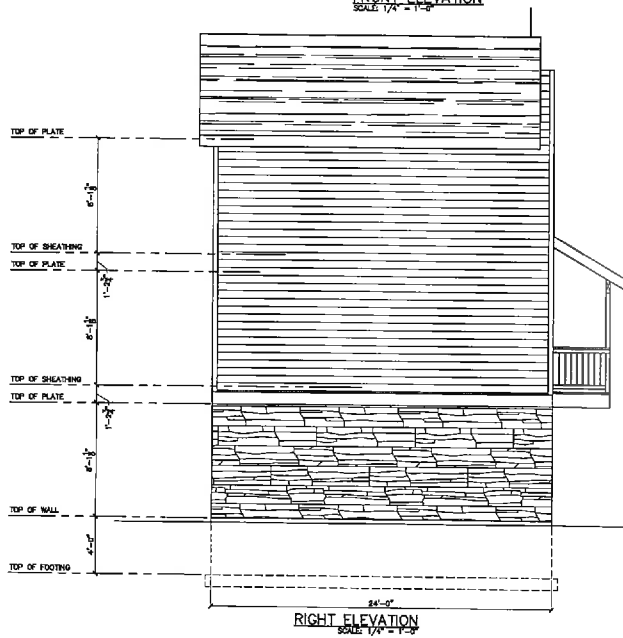
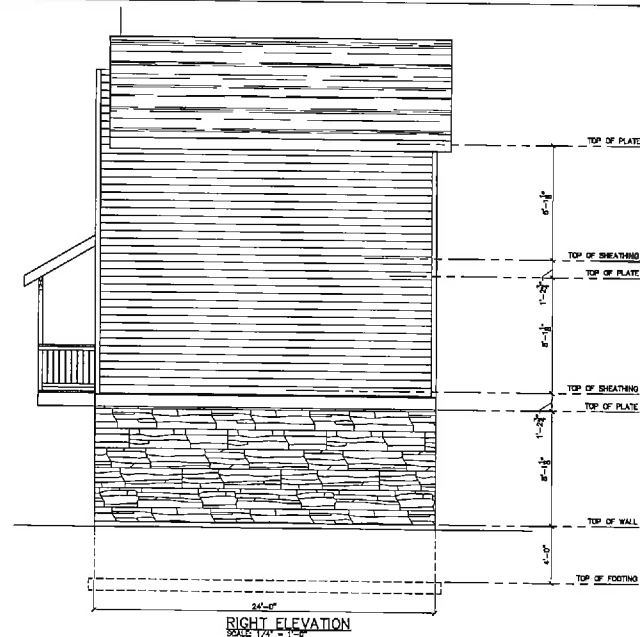
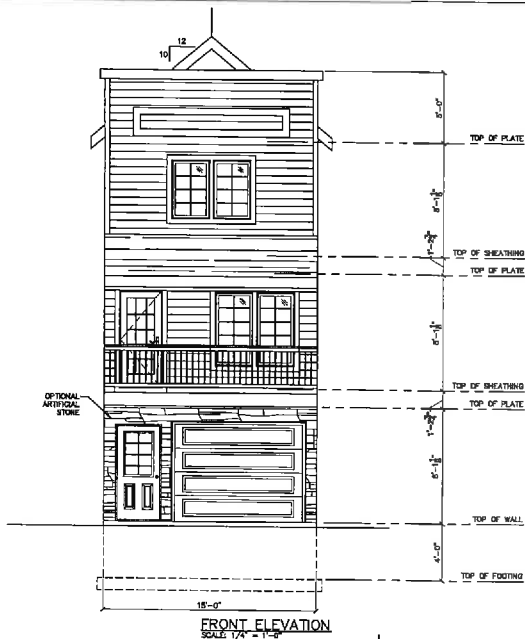
Sheet: **11**

RECEIVED

MAR -2 2017

APID CITY COMMUNITY PLANNING & DEVELOPMENT SERVICES

17TI002 Village on Monroe Housing Unit Design



NOTE:
WHILE EVERY ATTEMPT HAS BEEN MADE TO MAKE THESE DRAWINGS ACCURATE, THE DRAWING BOARD, INC. AND ITS EMPLOYEES SHALL NOT BE RESPONSIBLE FOR ANY ERRORS OR OMISSIONS. THE USER OF THESE DRAWINGS SHALL BE RESPONSIBLE FOR VERIFYING ALL DIMENSIONS AND CONDITIONS BEFORE CONSTRUCTION. THE DRAWING BOARD, INC. SHALL NOT BE RESPONSIBLE FOR ANY DAMAGES, INCLUDING BUT NOT LIMITED TO, CONSEQUENTIAL DAMAGES, ARISING OUT OF OR FROM THE USE OF THESE DRAWINGS. THE USER OF THESE DRAWINGS SHALL BE RESPONSIBLE FOR OBTAINING ALL NECESSARY PERMITS AND APPROVALS FROM THE APPROPRIATE AGENCIES. THE DRAWING BOARD, INC. SHALL NOT BE RESPONSIBLE FOR ANY DAMAGES, INCLUDING BUT NOT LIMITED TO, CONSEQUENTIAL DAMAGES, ARISING OUT OF OR FROM THE USE OF THESE DRAWINGS. THE USER OF THESE DRAWINGS SHALL BE RESPONSIBLE FOR OBTAINING ALL NECESSARY PERMITS AND APPROVALS FROM THE APPROPRIATE AGENCIES.

DRAWING BOARD

808 SOUTH STREET
SUITE 101
RAPID CITY, SD 57701
PH: (605) 848-0171
www.drawingboardinc.com

Commercial Drafting Services
THIS DOCUMENT(S) IS (ARE) THE PROPERTY OF THE DRAWING BOARD, INC. AND SHALL NOT BE USED FOR ANY OTHER PROJECT WITHOUT THE WRITTEN CONSENT OF THE DRAWING BOARD, INC.

Project title:
VILLAGE ON MONROE
NeighborWorks
IF THIS PRINT IS NOT 24"x36", IT IS NOT TO SCALE.

Sheet title:
Unit 4 - ELEVATIONS
RAPID CITY, SOUTH DAKOTA

Date: 1/4/17
Designed:
Drawn: RUT
Checked:
Project Number: 18015
File Name: 18015a1.DWG

RECEIVED

MAR - 2 2017