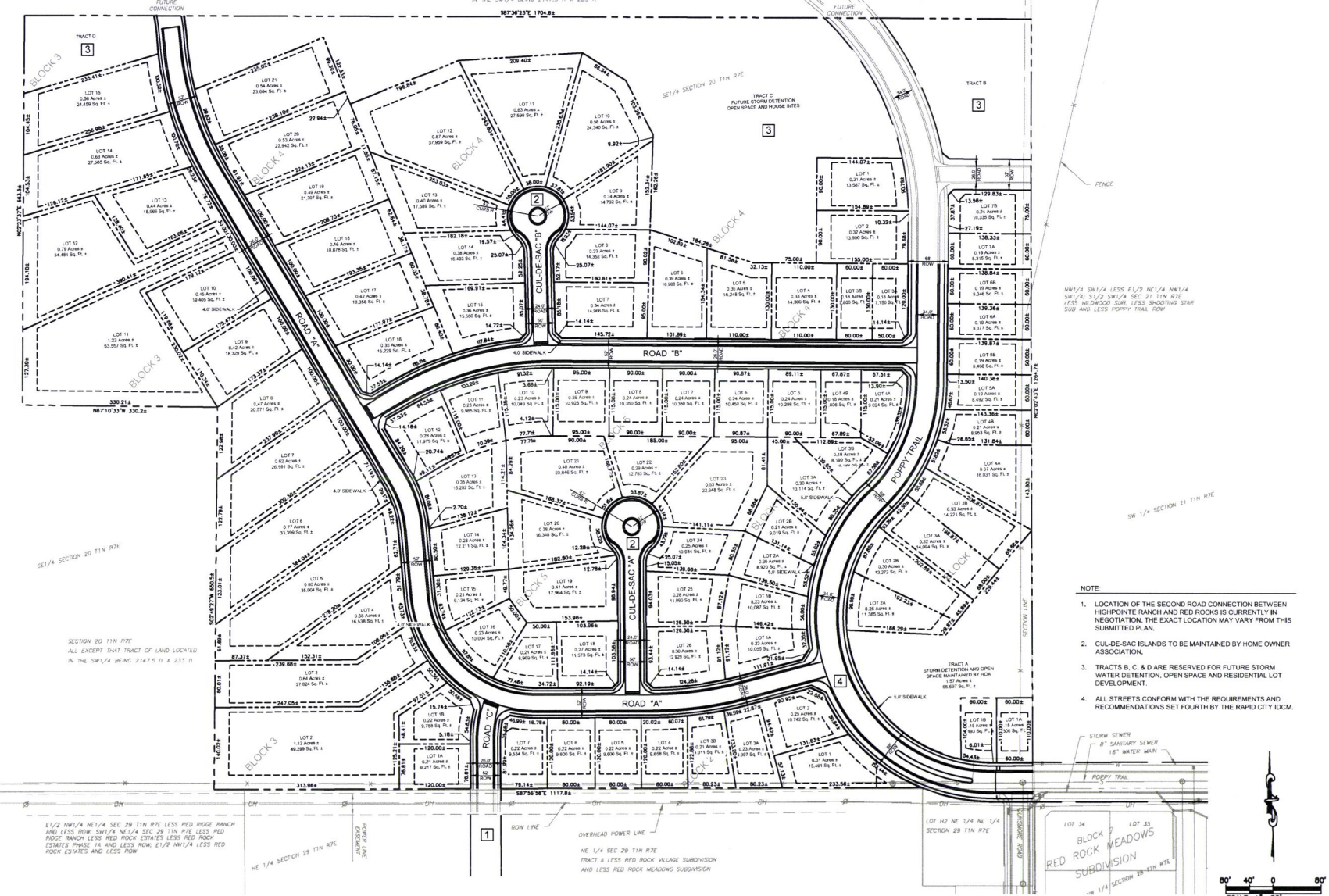


SEC 20 1/4 NW/4
ALL EXCEPT THAT TRACT OF LAND LOCATED
IN THE SW 1/4 BEING 2147.5 N 1/2 233 II



NW 1/4 SW 1/4 LESS E 1/2 NW 1/4 SW 1/4 SEC 21 1/4 N 1/2 RITE LESS RED ROCK SUB LESS SMOODING STRIP SUB AND LESS POPPY TRAIL ROW

- NOTE
1. LOCATION OF THE SECOND ROAD CONNECTION BETWEEN HIGHPOINTE RANCH AND RED ROCK IS CURRENTLY IN NEGOTIATION. THE EXACT LOCATION MAY VARY FROM THIS SUBMITTED PLAN.
 2. CUL-DE-SAC ISLANDS TO BE MAINTAINED BY HOME OWNER ASSOCIATION.
 3. TRACTS B, C, & D ARE RESERVED FOR FUTURE STORM WATER DETENTION, OPEN SPACE AND RESIDENTIAL LOT DEVELOPMENT.
 4. ALL STREETS CONFORM WITH THE REQUIREMENTS AND RECOMMENDATIONS SET FORTH BY THE RAPID CITY DCM.

Internal Job No: 16-0817
Designed By: GB
Drawn By: KM
Checked By: XJ
Survey Date: MON YEAR

PRELIMINARY FOR REVIEW ONLY

528 Kansas City St., Rapid City, SD 57701
Tel: 605.791.5866 | Tlx: 605.791.5863
www.ktmdesignsolutions.com
www.ktmengineering.com
KTM DESIGN SOLUTIONS, INC.
CIVIL ENGINEERING | LAND PLANNING
CONSTRUCTION ADMINISTRATION



Sheet Name: SITE PLAN

