

Case No. 17VR002

**Legal Description:**

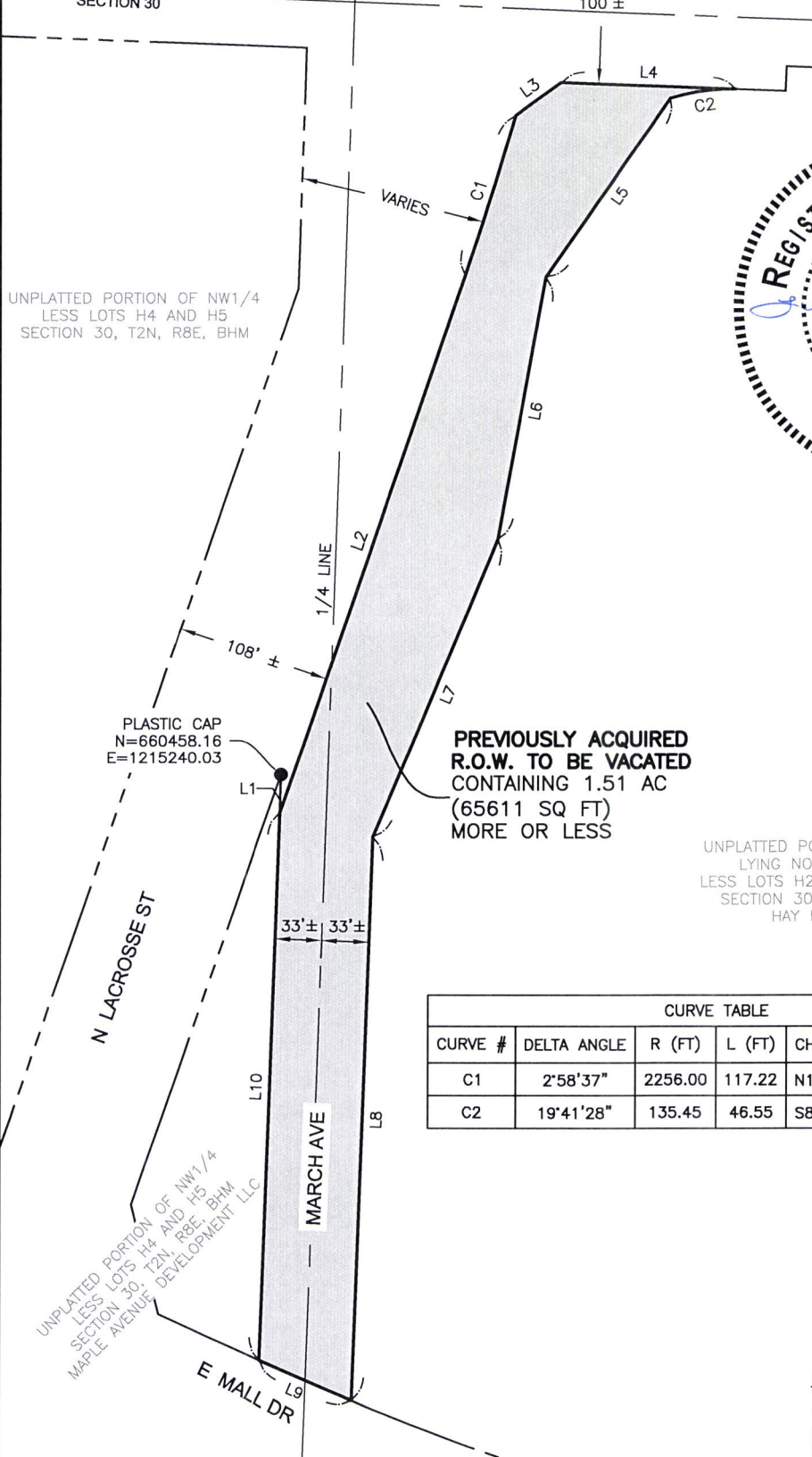
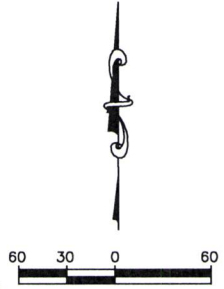
That portion of March Avenue to be vacated in the NW1/4 and a portion of March Avenue and N. Lacrosse Street to be vacated and the NE1/4 of Section 30, T2N, R8E, BHM, Rapid City, Pennington County, South Dakota

17VR002

A PORTION OF MARCH AVENUE TO BE VACATED IN THE NW1/4 AND A PORTION OF MARCH AVE AND N. LACROSSE ST TO BE VACATED IN THE NE1/4 OF SECTION 30, T2N, R8E, BHM RAPID CITY, PENNINGTON COUNTY, SOUTH DAKOTA.

SECTION 19 SEGER DR  
SECTION 30

UNPLATTED PORTION OF NW1/4 LESS LOTS H4 AND H5 SECTION 30, T2N, R8E, BHM



**PREVIOUSLY ACQUIRED R.O.W. TO BE VACATED CONTAINING 1.51 AC (65611 SQ FT) MORE OR LESS**

UNPLATTED PORTION OF NE1/4 LYING NORTH OF I-90 LESS LOTS H2, H3, H4 AND H5 SECTION 30, T2N, R8E, BHM HAY LAND LLC

CURVE TABLE					
CURVE #	DELTA ANGLE	R (FT)	L (FT)	CHORD BEARING	LC (FT)
C1	2°58'37"	2256.00	117.22	N17°35'19"E	117.20
C2	19°41'28"	135.45	46.55	S82°03'46"W	46.32

LINE TABLE		
LINE #	DIRECTION	L (FT)
L2	N19°04'37"E	397.25
L3	N54°00'08"E	39.28
L4	S87°46'41"E	122.95
L5	S35°04'22"W	152.26
L6	S10°25'22"W	185.96
L7	S22°42'22"W	226.51
L8	S02°01'25"W	393.97
L9	N67°05'38"W	70.61
L10	N02°01'02"E	383.86

**NOTE:**  
THE COORDINATES, DISTANCES, AND AREAS SHOWN ON THIS PLAT ARE BASED ON THE SOUTH DAKOTA STATE PLANE COORDINATE SYSTEM, SOUTH ZONE (NAD 83/2011). SF=0.999792286

EXHIBIT A

