

Case No. 17RZ009

Legal Description:

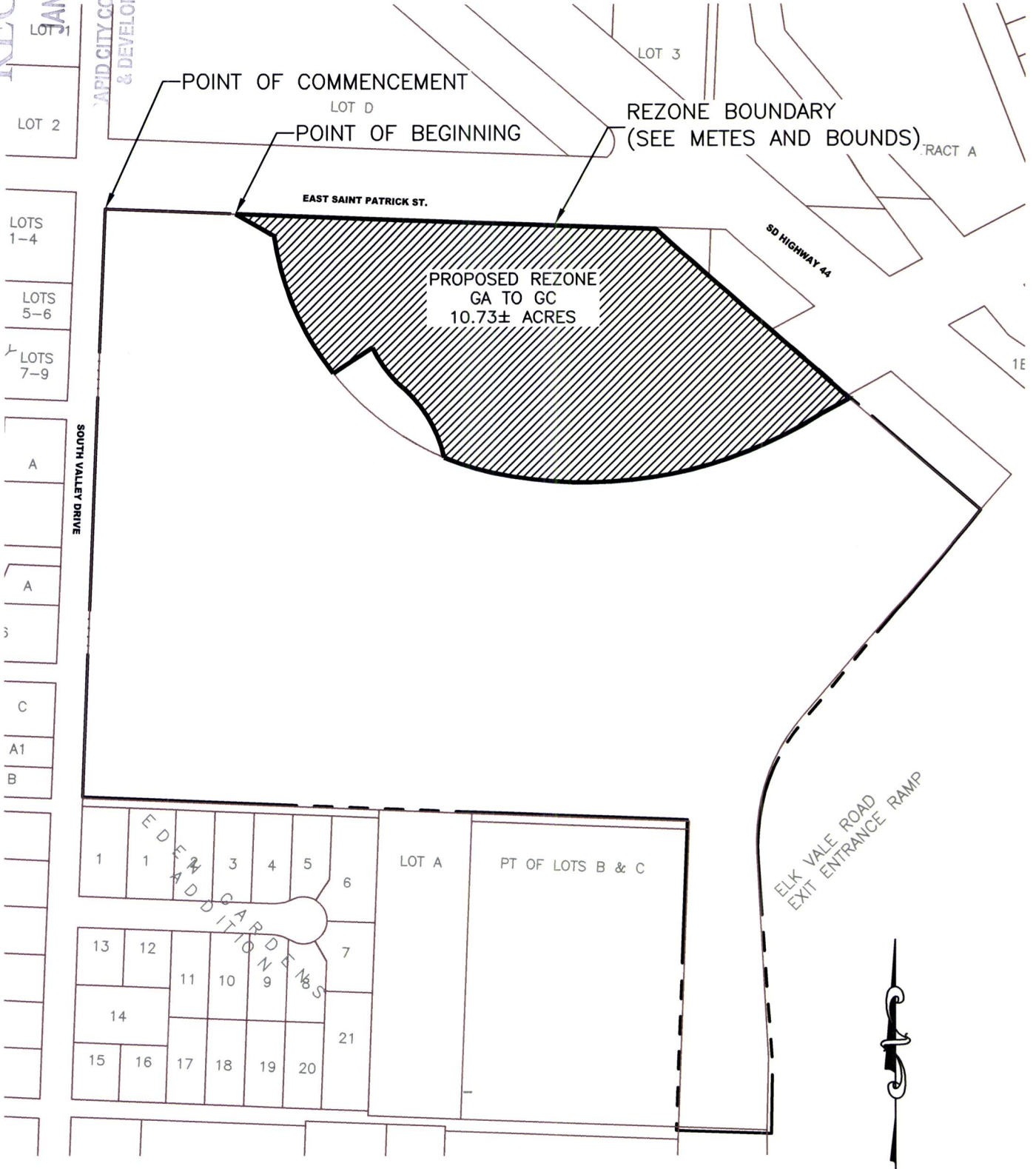
A portion of the N1/2 of the NW1/4, and a portion of the N1/2 of the SE1/4 of the NW1/4, Section 9, T1N, R8E, BHM, Rapid City, Pennington County, South Dakota, More fully described as follows: Commencing at the Section Corner common to Sections 4, 5, 8, and 9, T1N, R8E, BHM, Rapid City, Pennington County, South Dakota; thence, S89°56'50"E, a distance of 280.80', to the point of beginning; Thence first course: S89°56'50"E, a distance of 895.79 feet, Thence second course: S51°16'05"E, a distance of 545.28 feet; Thence third course: S59°48'10"W, a distance of 151.83 feet; Thence fourth course: on a curve turning to the right with an arc length of 651.65 feet, with a radius of 918.50 feet, with a chord bearing of S80°07'40"W, with a chord length of 638.07 feet; Thence fifth course: on a curve turning to the right with an arc length of 103.64 feet, with a radius of 600.00 feet, with a chord bearing of N74°35'56"W, with a chord length of 103.51 feet; Thence sixth course: on a curve turning to the left with an arc length of 192.70 feet, with a radius of 249.74 feet, with a chord bearing of N34°13'15"W, with a chord length of 187.96 feet; Thence seventh course: on a curve turning to the right with an arc length of 92.30 feet, with a radius of 260.00 feet, with a chord bearing of N37°35'40"W, with a chord length of 91.81 feet; Thence eighth course: S54°39'22"W, a distance of 101.60 feet; Thence ninth course: on a curve turning to the right with an arc length of 320.43 feet, with a radius of 600.00 feet, with a chord bearing of N25°38'28"W, with a chord length of 316.63 feet; Thence tenth course: N60°22'50"W, a distance of 91.92 feet, to the point of beginning

RECEIVED
JAN 27 2017

RAPID CITY COMMUNITY PLANNING
& DEVELOPMENT SERVICES

REZONE EXHIBIT

GA - GENERAL AGRICULTURE TO GC - GENERAL COMMERCIAL
THE N1/2NW1/4 EXCEPTING THEREFROM LOT H5 OF THE NE1/4NW1/4; N1/2SE1/4NW1/4
EXCEPTING THEREFROM LOT H1; LOT AB OF NW1/4 AS SHOWN BY THE PLAT RECORDED IN
BOOK 12 OF HWY PLATS ON PAGE 17; OF SECTION 9, T2N, R8E, BHM
PENNINGTON COUNTY, SOUTH DAKOTA



Johnson Ranch Rezones

