

Case No. 17RZ008

**Legal Description:**

A portion of the N1/2 of the NW1/4, and a portion of the N1/2 of the SE1/4 of the NW1/4, Section 9, T1N, R8E, BHM, Rapid City, Pennington County, South Dakota, more fully described as follows: Commencing at the Section Corner common to Sections 4, 5, 8, and 9, T1N, R8E, BHM, Rapid City, Pennington County, South Dakota; thence, S00°14'11"W, a distance of 355.00'; thence, S89°56'50"E, a distance of 464.94 feet; thence, N54°39'22"E, a distance of 41.99 feet, to the point of beginning; Thence first course: N54°39'22"E, a distance of 101.60 feet; Thence second course: on a curve turning to the left with an arc length of 92.30 feet, with a radius of 260.00 feet, with a chord bearing of S37°35'40"E, with a chord length of 91.81 feet; Thence third course: on a curve turning to the right with an arc length of 191.88 feet, with a radius of 273.01 feet, with a chord bearing of S34°13'15"E, with a chord length of 187.96 feet; Thence fourth course: on a curve turning to the right with an arc length of 300.65 feet, with a radius of 600 feet, with a chord bearing of N55°17'43"E, with a chord length of 297.52 feet to the point of beginning

# REZONE EXHIBIT

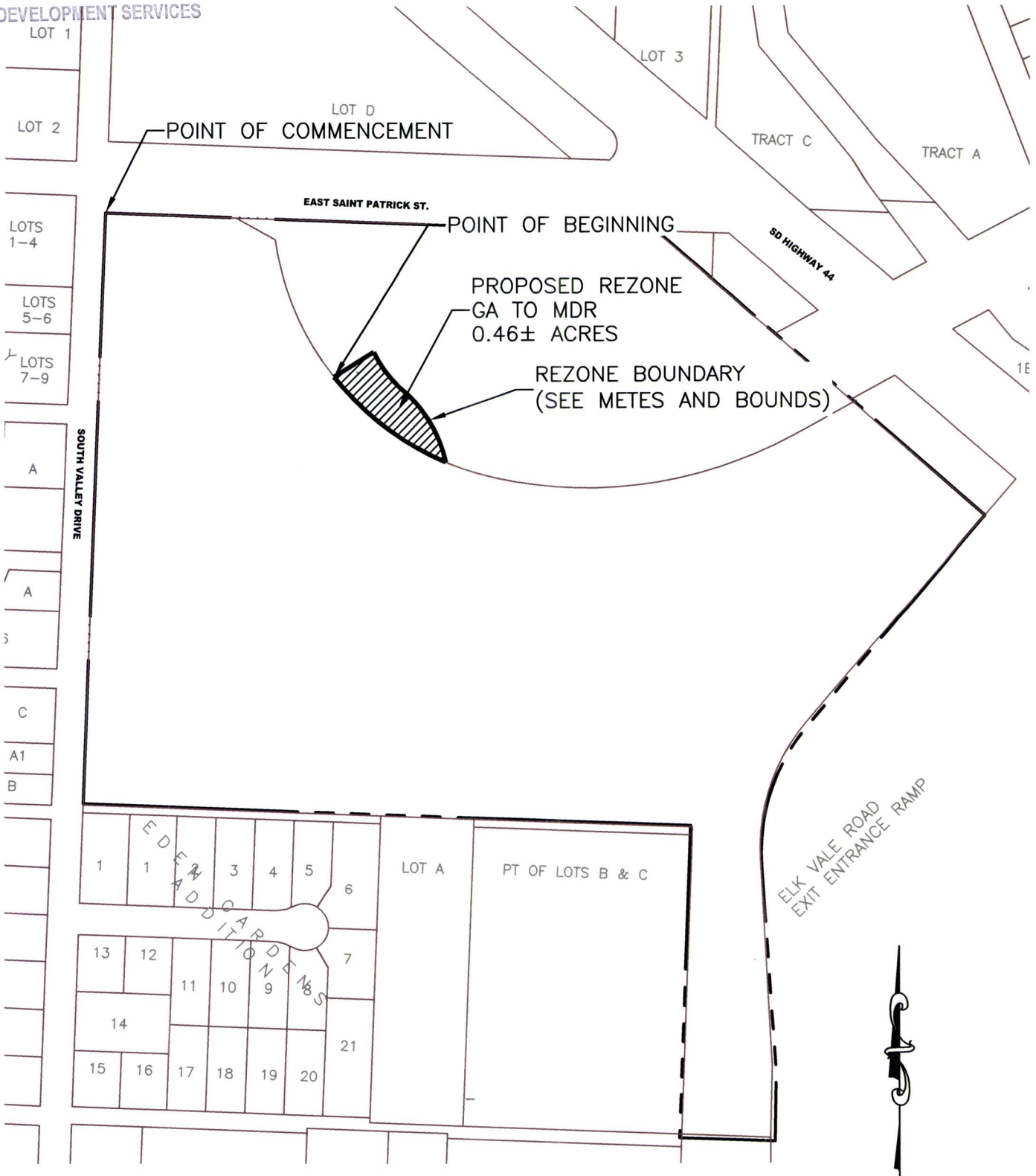
GA - GENERAL AGRICULTURE TO MDR

# RECEIVED

JAN 27 2017

THE N1/2NW1/4 EXCEPTING THEREFROM LOT H5 OF THE NE1/4NW1/4; N1/2SE1/4NW1/4 EXCEPTING THEREFROM LOT H1; LOT AB OF NW1/4 AS SHOWN BY THE PLAT RECORDED IN BOOK 12 OF HWY PLATS ON PAGE 17; OF SECTION 9, T2N, R8E, BHM PENNINGTON COUNTY, SOUTH DAKOTA

PID CITY COMMUNITY PLANNING & DEVELOPMENT SERVICES



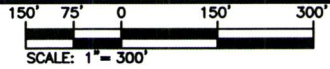
528 Kansas City St  
Rapid City, SD 57701  
[p] 605.791.5866  
[f] 605.791.5863  
[e] engineers@ktmcsi.com

CIVIL ENGINEERING | LAND PLANNING | CONSTRUCTION ADMINISTRATION  
www.ktmcsolutions.com

## JOHNSON RANCH SUBDIVISION

RAPID CITY, SOUTH DAKOTA

JANUARY 26, 2017



**PRELIMINARY  
FOR REVIEW ONLY**

# Johnson Ranch Rezones

