

Case No. 17RZ007

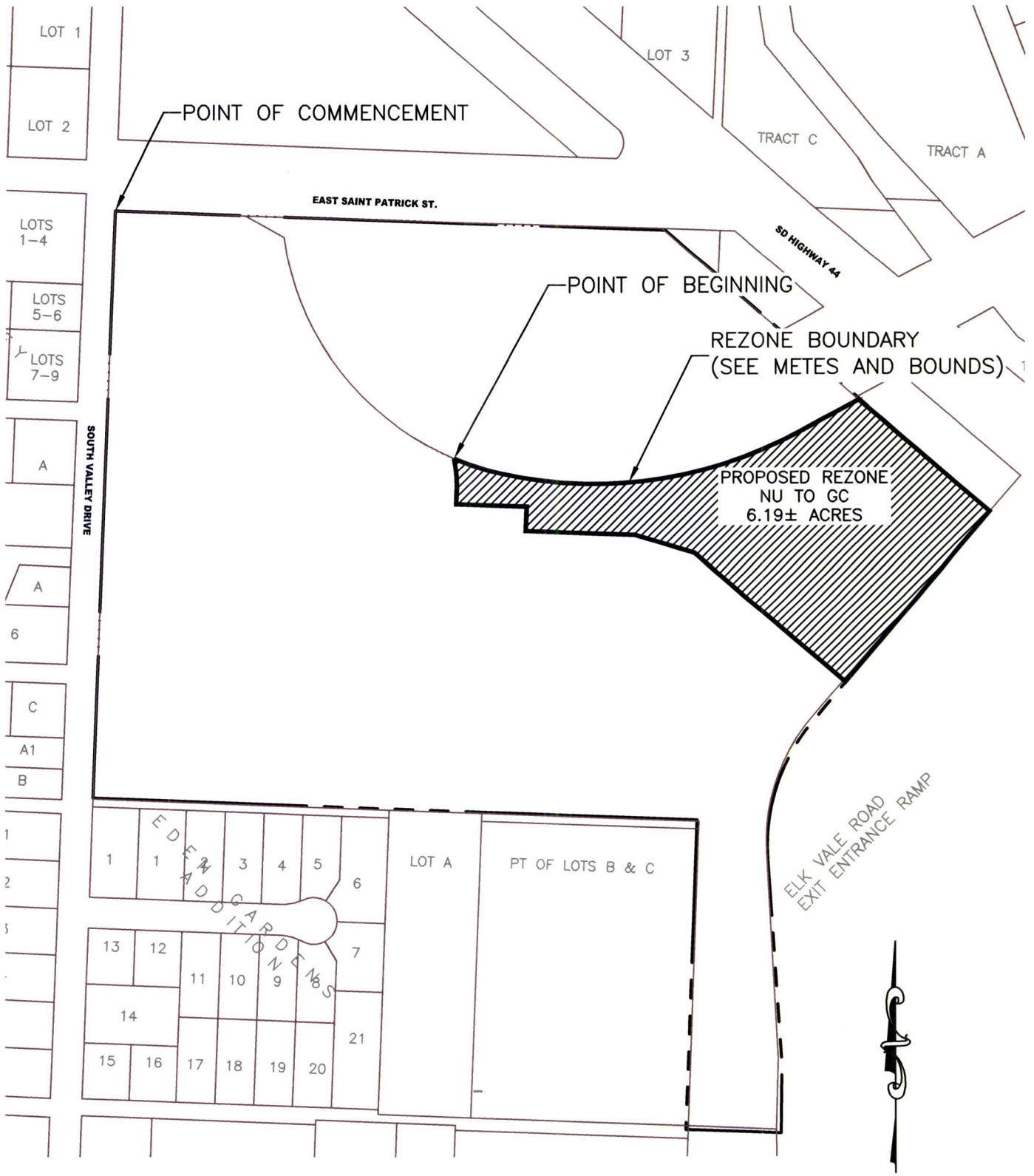
Legal Description:

A portion of the N1/2 of the NW1/4, and a portion of the N1/2 of the SE1/4 of the NW1/4, Section 9, T1N, R8E, BHM, Rapid City, Pennington County, South Dakota, More fully described as follows: Commencing at the Section Corner common to Sections 4, 5, 8, and 9, T1N, R8E, BHM, Rapid City, Pennington County, South Dakota; thence, S89°56'50"E, a distance of 1,176.59 feet; thence, S51°16'05"E, a distance of 545.28 feet, to the point of beginning; Thence first course: S51°16'05"E, a distance of 369.68 feet; Thence second course: S38°08'02"W, a distance of 478.29 feet; Thence third course: N51°16'39"W, a distance of 425.14 feet; Thence fourth course: N75°00'50"W, a distance of 132.95 feet; Thence fifth course: N89°45'49"W, a distance of 233.71 feet; Thence sixth course: N00°14'11"E, a distance of 51.45 feet; Thence seventh course: N89°45'49"W, a distance of 151.00 feet; Thence eighth course: N00°14'11"E, a distance of 32.04 feet; Thence ninth course: on a curve turning to the left with an arc length of 64.51 feet, with a radius of 273.01 feet, with a chord bearing of N07°18'59"W, with a chord length of 64.36 feet; Thence tenth course: on a curve turning to the left with an arc length of 103.64 feet, with a radius of 600.00 feet, with a chord bearing of S74°35'56"E, with a chord length of 103.54 feet; Thence eleventh course: on a curve turning to the left with an arc length of 651.65 feet, with a radius of 918.50 feet, with a chord bearing of N80°07'40"E, with a chord length of 638.07 feet; Thence twelfth course: N59°48'10"E, a distance of 151.83 feet, to the point of beginning

REZONE EXHIBIT

NU TO GC

THE N1/2NW1/4 EXCEPTING THEREFROM LOT H5 OF THE NE1/4NW1/4; N1/2SE1/4NW1/4 EXCEPTING THEREFROM LOT H1; LOT AB OF NW1/4 AS SHOWN BY THE PLAT RECORDED IN BOOK 12 OF HWY PLATS ON PAGE 17; OF SECTION 9, T2N, R8E, BHM PENNINGTON COUNTY, SOUTH DAKOTA



Johnson Ranch Rezones

