

Case No. 17RZ006

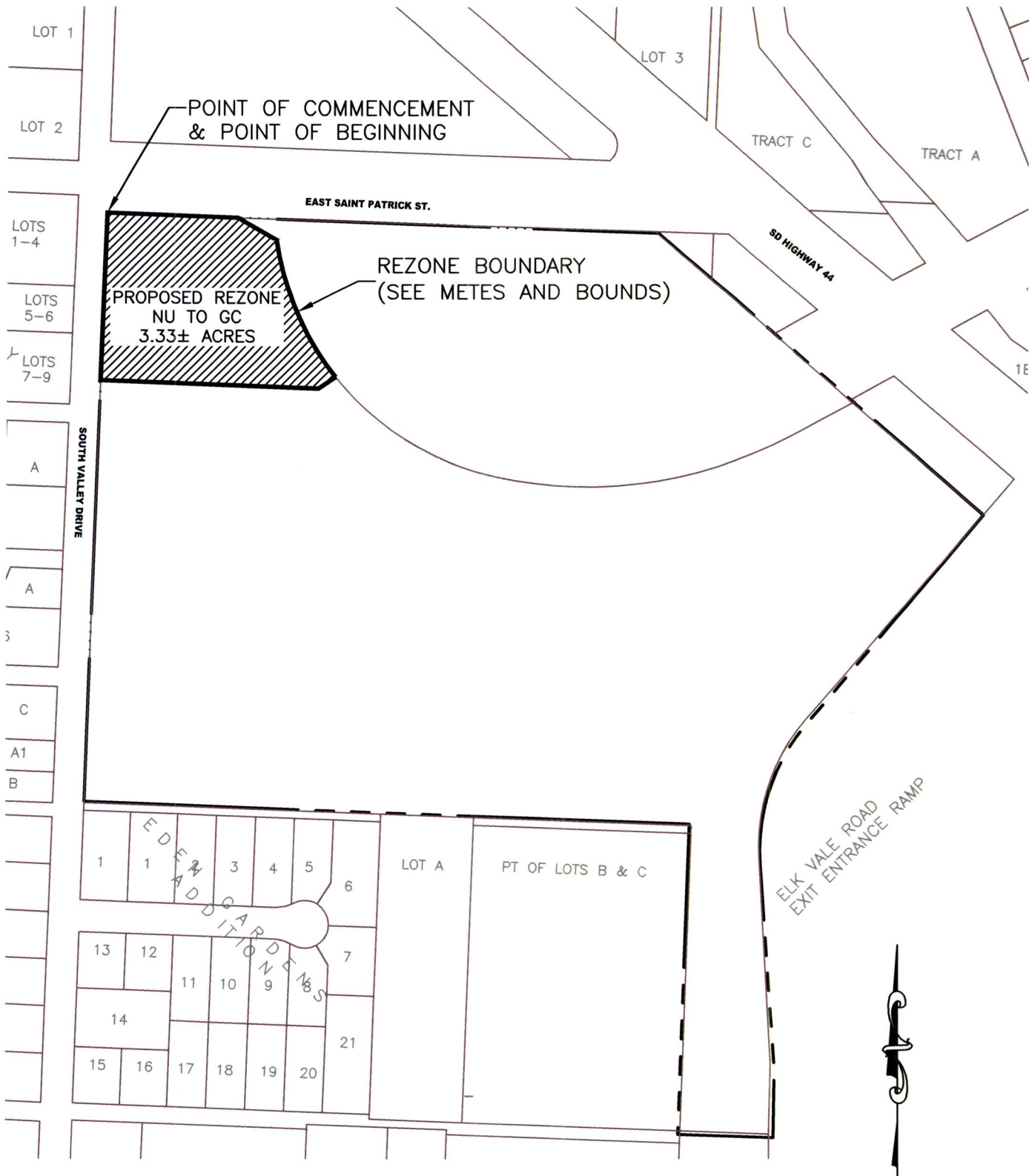
Legal Description:

A portion of the N1/2 of the NW1/4, and a portion of the N1/2 of the SE1/4 of the NW1/4, Section 9, T1N, R8E, BHM, Rapid City, Pennington County, South Dakota, more fully described as follows: Commencing at the Section Corner common to Sections 4, 5, 8, and 9, T1N, R8E, BHM, Rapid City, Pennington County, South Dakota, and the point of beginning; Thence first course: S89°56'50"E, a distance of 280.80 feet; Thence second course: S60°22'50"E, a distance of 91.92 feet; Thence third course: on a curve turning to the left with an arc length of 320.43 feet, with a radius of 600.00 feet, with a chord bearing of S25°38'28"E, with a chord length of 316.63 feet; Thence fourth course: S54°39'22"W, a distance of 41.99 feet; Thence fifth course: N89°56'50"W, a distance of 464.94 feet; Thence sixth course: N00°14'11"E, a distance of 355.00 feet, to the point of beginning

REZONE EXHIBIT

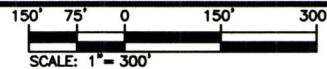
NU TO GC

THE N1/2NW1/4 EXCEPTING THEREFROM LOT H5 OF THE NE1/4NW1/4; N1/2SE1/4NW1/4 EXCEPTING THEREFROM LOT H1; LOT AB OF NW1/4 AS SHOWN BY THE PLAT RECORDED IN BOOK 12 OF HWY PLATS ON PAGE 17; OF SECTION 9, T2N, R8E, BHM PENNINGTON COUNTY, SOUTH DAKOTA



528 Kansas City St
 Rapid City, SD 57701
 [p] 605.791.5866
 [f] 605.791.5863
 [e] engineers@ktmidsi.com

JOHNSON RANCH SUBDIVISION
 RAPID CITY, SOUTH DAKOTA
 JANUARY 26, 2017



**PRELIMINARY
 FOR REVIEW ONLY**

Johnson Ranch Rezones

