

Case No. 17RZ005

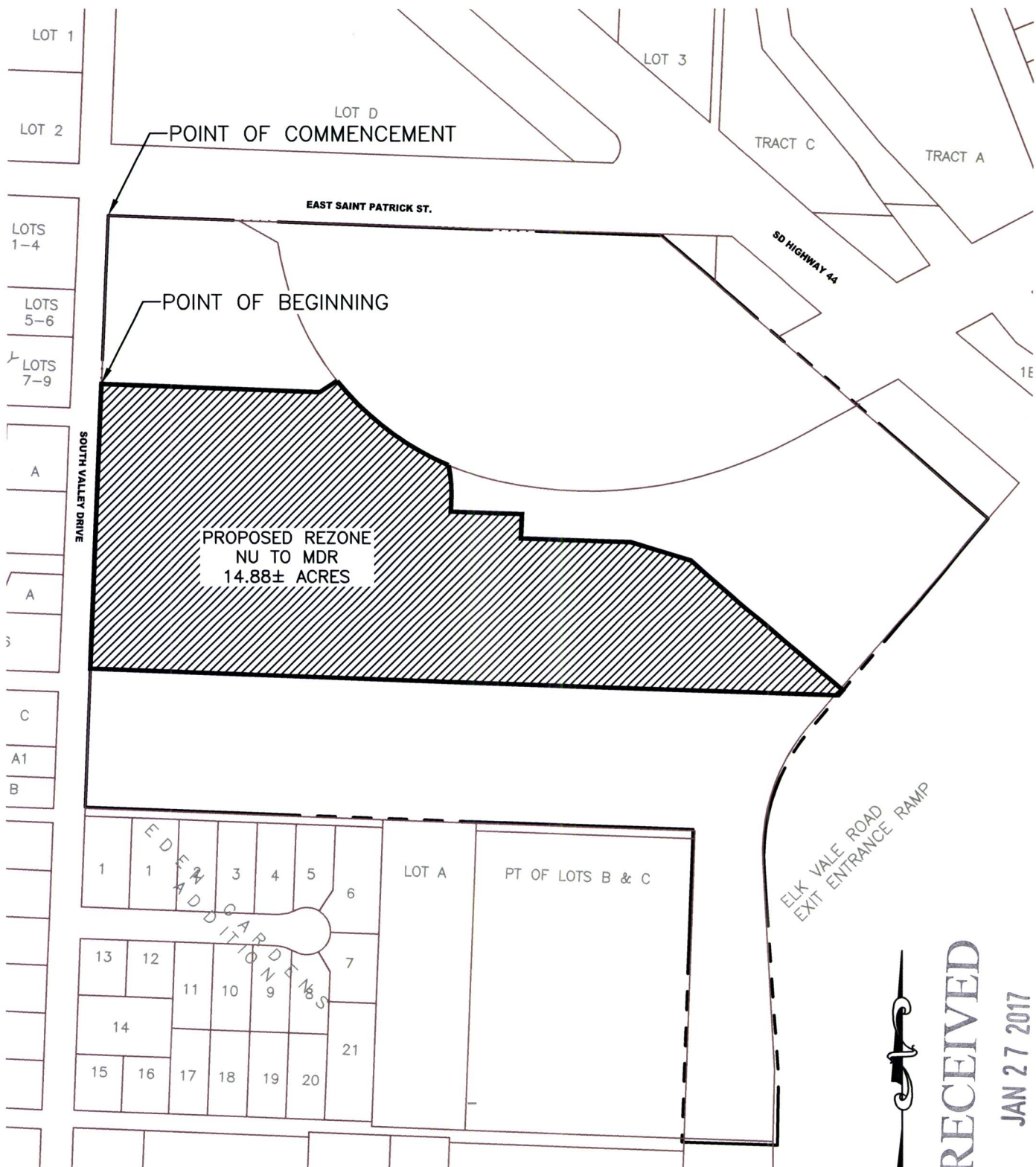
Legal Description:

A portion of the N1/2 of the NW1/4, and a portion of the N1/2 of the SE1/4 of the NW1/4, Section 9, T1N, R8E, BHM, Rapid City, Pennington County, South Dakota, more fully described as follows: Commencing at the Section Corner common to Sections 4, 5, 8, and 9, T1N, R8E, BHM, Rapid City, Pennington County, South Dakota; thence, S00°14'11"W, a distance of 355.00', to the point of beginning; Thence first course: S89°56'50"E, a distance of 464.94 feet, Thence second course: N54°39'22"E, a distance of 41.99 feet; Thence third course: on a curve turning to the left with an arc length of 300.65 feet, with a radius of 600.00 feet, with a chord bearing of S55°17'43"E, with a chord length of 297.52 feet; Thence fourth course: on a curve turning to the right with an arc length of 64.51 feet, with a radius of 273.01 feet, with a chord bearing of S07°18'59"E, with a chord length of 64.36 feet; Thence fifth course: S00°14'11"W, a distance of 32.39 feet; Thence sixth course: S89°53'57"E, a distance of 151.00 feet; Thence seventh course: S00°14'11"W, a distance of 52.00 feet; Thence eighth course: S89°53'57"E, a distance of 233.71 feet; Thence ninth course: S75°00'50"E, a distance of 132.95 feet; Thence tenth course: S51°16'39"E, a distance of 425.14 feet; Thence eleventh course: S38°08'02"W, a distance of 14.11 feet; Thence twelfth course: N89°53'40"W, a distance of 1,590.23 feet; Thence thirteenth course: N00°14'11"E, a distance of 602.94 feet, to the point of beginning

REZONE EXHIBIT

NU TO MDR

THE N1/2NW1/4 EXCEPTING THEREFROM LOT H5 OF THE NE1/4NW1/4; N1/2SE1/4NW1/4 EXCEPTING THEREFROM LOT H1; LOT AB OF NW1/4 AS SHOWN BY THE PLAT RECORDED IN BOOK 12 OF HWY PLATS ON PAGE 17; OF SECTION 9, T2N, R8E, BHM PENNINGTON COUNTY, SOUTH DAKOTA



RECEIVED

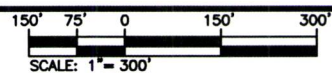
JAN 27 2017

RAPID CITY COMMUNITY PLANNING & DEVELOPMENT SERVICES

KTM
 DESIGN SOLUTIONS, INC.
 CIVIL ENGINEERING | LAND PLANNING | CONSTRUCTION ADMINISTRATION
 www.ktmdesignsolutions.com

528 Kansas City St
 Rapid City, SD 57701
 [p] 605.791.5866
 [f] 605.791.5863
 [e] engineers@ktmdsi.com

JOHNSON RANCH SUBDIVISION
 RAPID CITY, SOUTH DAKOTA
 JANUARY 26, 2017



**PRELIMINARY
 FOR REVIEW ONLY**

Johnson Ranch Rezones

