

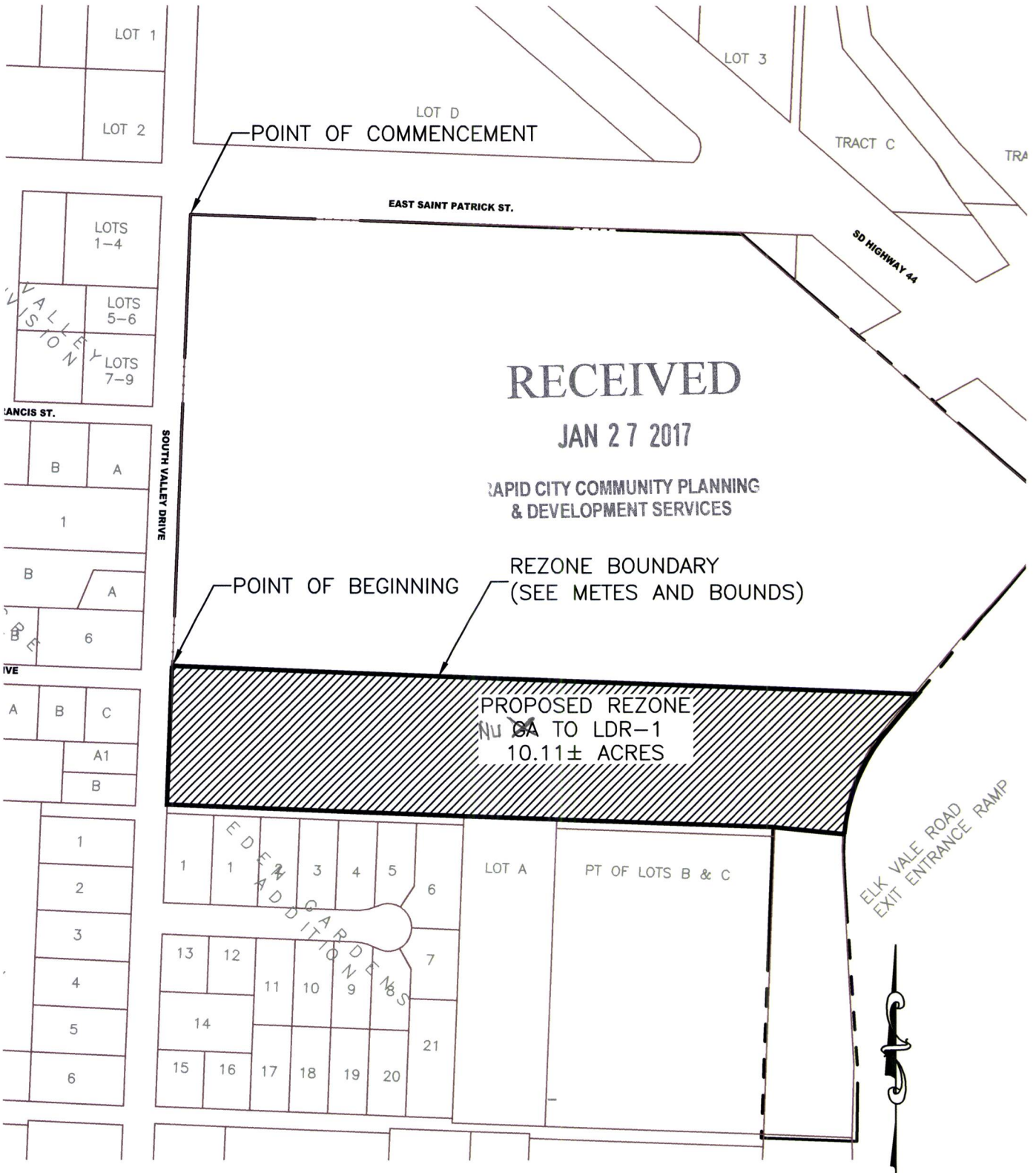
Case No. 17RZ004

Legal Description:

A portion of the N1/2 of the NW1/4, and a portion of the N1/2 of the SE1/4 of the NW1/4, Section 9, T1N, R8E, BHM, Pennington County, South Dakota, more fully described as follows: Commencing at the Section Corner common to Sections 4, 5, 8, and 9, T1N, R8E, BHM., thence S 00°14'11" W, a distance of 957.94 feet, to the point of beginning; Thence, first course: S 89°53'40" E, a distance of 1,590.23' feet; Thence, second course: S 38°08'02" W, a distance of 97.96 feet; Thence, third course: on a curve turning to the left with an arc length of 245.17 feet, with a radius of 409.03 feet, with a chord bearing of S 20°55'26" W, with a chord length of 241.52 feet; Thence, fourth course: N 86°14'55" W, a distance of 152.90 feet; Thence, fifth course: N 89°53'57" W, a distance of 1,291.96 feet; Thence, sixth course: N 00°14'11" E, a distance of 293.50 feet, to the said point of beginning

REZONE EXHIBIT

GA - GENERAL AGRICULTURE TO LDR-1 LOW DENSITY RESIDENTIAL
THE N1/2NW1/4 EXCEPTING THEREFROM LOT H5 OF THE NE1/4NW1/4; N1/2SE1/4NW1/4
EXCEPTING THEREFROM LOT H1; LOT AB OF NW1/4 AS SHOWN BY THE PLAT RECORDED IN
BOOK 12 OF HWY PLATS ON PAGE 17; OF SECTION 9, T2N, R8E, BHM
PENNINGTON COUNTY, SOUTH DAKOTA



Johnson Ranch Rezones

