

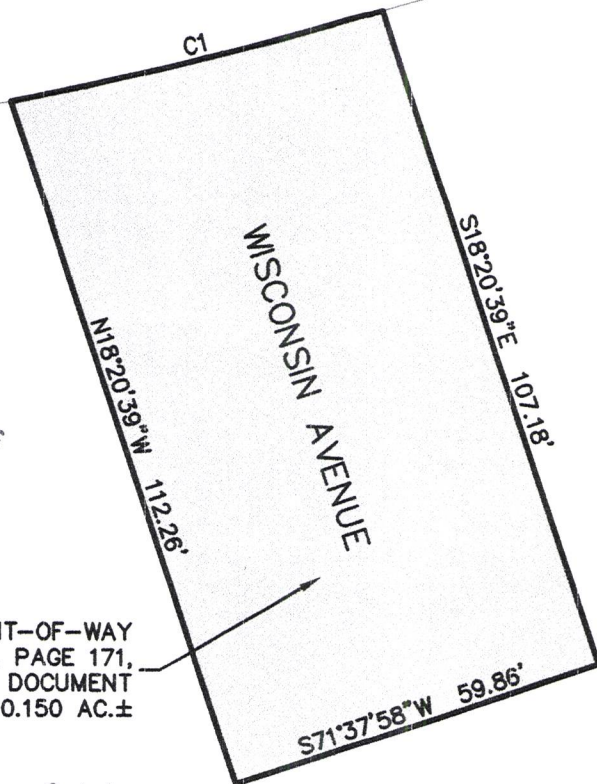
EXHIBIT 'A'
**VACATION OF WISCONSIN AVENUE
 RIGHT-OF-WAY**

LYING BETWEEN LOT 7 OF BLOCK 23 & BLOCK 24A OF
 ROBBINSDALE ADDITION #7,
 LOCATED IN SECTION 13, T1N, R7E, BHM,
 RAPID CITY, PENNINGTON COUNTY, SOUTH DAKOTA



SEPT. 21, 2016
 0 15' 30'
 SCALE: 1" = 30'

TEXAS STREET
 60' RIGHT-OF-WAY OF RECORD



RECEIVED

JAN 25 2017

RAPID CITY COMMUNITY PLANNING
 & DEVELOPMENT SERVICES

WISCONSIN AVENUE RIGHT-OF-WAY
 DEDICATED ON PLAT BOOK 14, PAGE 171,
 TO BE VACATED THIS DOCUMENT
 = 0.150 AC.±

BLOCK 24A

CURVE	ARC LENGTH	RADIUS	DELTA ANGLE	CHORD BEARING	CHORD LENGTH
C1	60.09'	746.20'	4°36'51"	N76°28'59"E	60.08'



**RENNER
 ASSOCIATES, LLC**
 CIVIL ENGINEERING • LAND SURVEYING

616 SIXTH STREET PH: 605. 721-7310
 RENNERRASSOC.COM RAPID CITY, SD 57701 FX: 605. 721-7313

