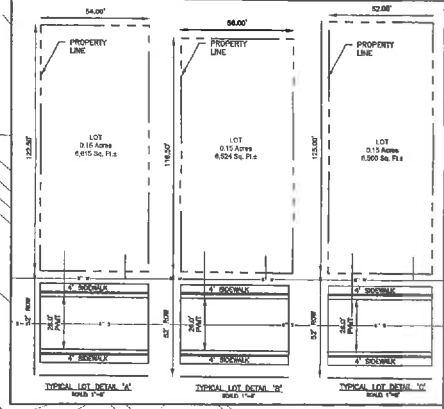
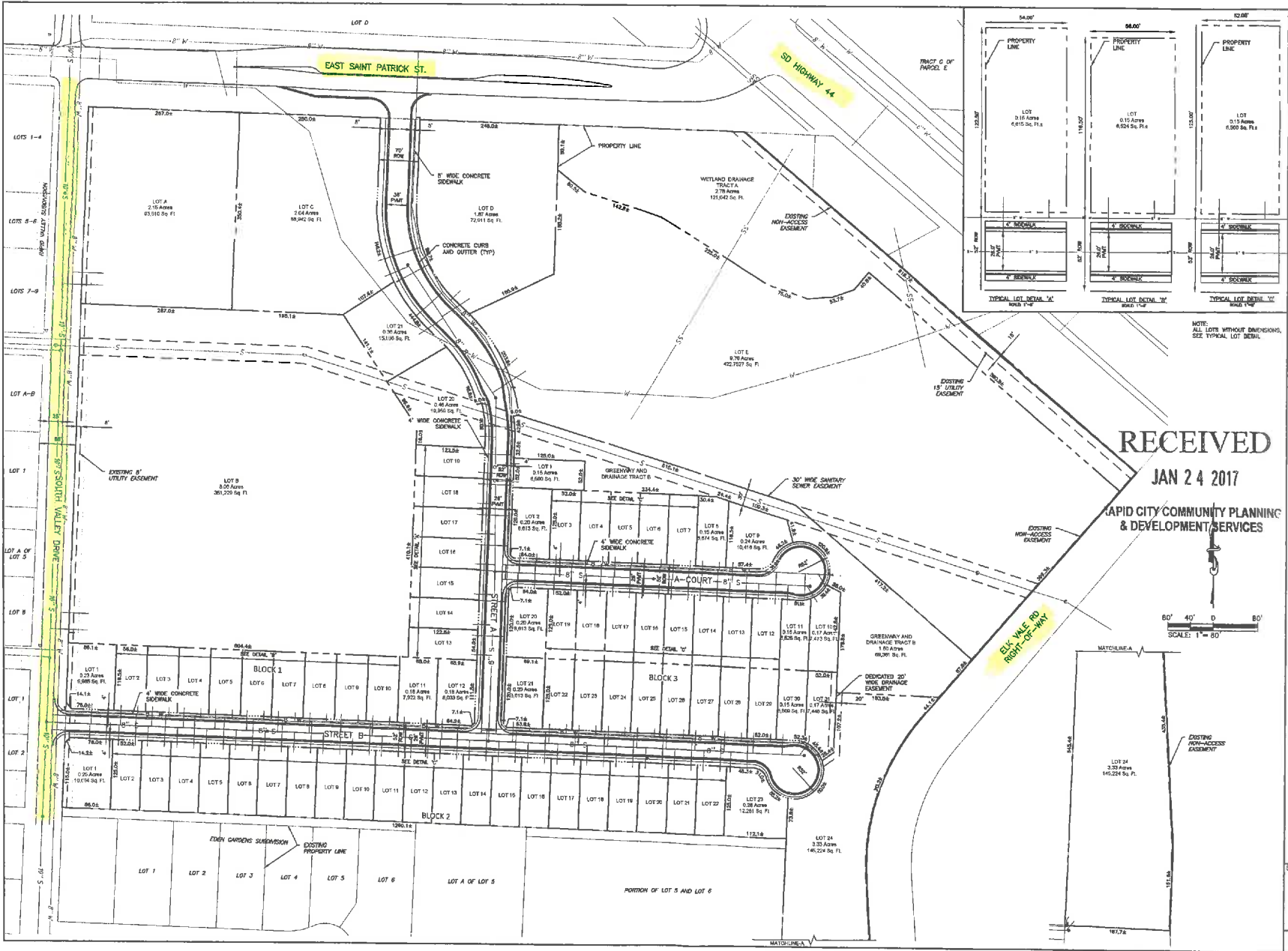


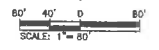
X:\300-999\324 Johnson Ranch\Johnson Ranch South PSD 11.15.17 - Standard\SET\300-999\324 PSD PLAN.dwg 1/23/2017 3:48pm



NOTE: ALL LOTS WITHOUT DIMENSIONS, SEE TYPICAL LOT DETAIL.

RECEIVED
JAN 24 2017

RAPID CITY COMMUNITY PLANNING
& DEVELOPMENT SERVICES



31/2017, PRELIMINARY SUBDIVISION PLAN.

Sheet No.	2
Project No.	300-999-324
Client	Johnson Ranch
City	Rapid City, SD
Scale	1" = 80'
Date	1/23/2017
Drawn By	PKM/JL
Checked By	XXX/XXX
Designed By	ATM #16-0826 KT

**PRELIMINARY
FOR REVIEW ONLY**

528 Kansas City St., Rapid City, SD 57701
Tel 605.791.5866 | Fax 605.791.5863
www.ktmdesignsolutions.com
CIVIL ENGINEERING | LAND PLANNING
CONSTRUCTION ADMINISTRATION



JOHNSON RANCH SUBDIVISION
RAPID CITY, SOUTH DAKOTA