

Case No. 16RZ035



Legal Description:

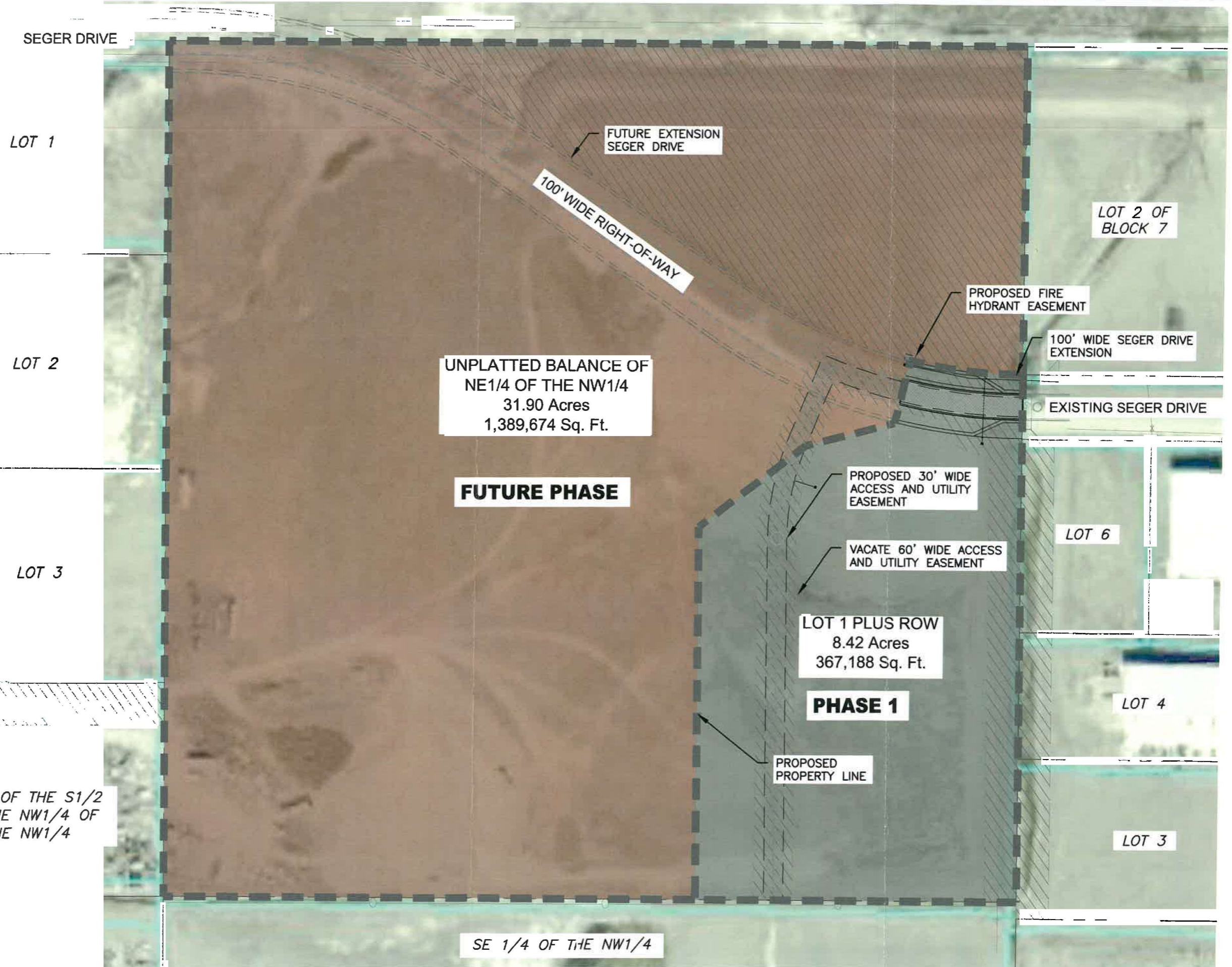
A portion of the NE1/4 of the NW1/4 of Section 28, T2N, R8E, BHM, Rapid City, Pennington County, South Dakota, more fully described as follows: Commencing at the northeast corner of NE1/4 NW1/4 of Section 28, T2N, R8E, BHM, Rapid City, Pennington County, South Dakota; then S 00°03'17" W, a distance of 607.94' to the point of beginning; Thence, first course: S 00°03'17" W, a distance of 717.48';; Thence, second course: N 89°51'08" W, a distance of 500.00';; Thence, third course: N 00°03'17" E, a distance of 577.26';; Thence, fourth course: N 52°18'49" E a distance of 207.25';; Thence, fifth course: N 75°28'03" E a distance of 142.49';; Thence, sixth course: curving to the left with an arc length of 200.05', with a radius of 850.01', with a chord bearing of S 83°13'47" E, with a chord length of 199.58', to the said point of beginning

PHASING / MASTER PLAN

DECEMBER 8, 2016

LEGEND

-  LIGHT INDUSTRIAL
-  GENERAL AGRICULTURAL



S1/2 OF THE S1/2 OF THE NW1/4 OF THE NW1/4

UNPLATTED BALANCE OF NE1/4 OF THE NW1/4
31.90 Acres
1,389,674 Sq. Ft.

FUTURE PHASE

LOT 1 PLUS ROW
8.42 Acres
367,188 Sq. Ft.

PHASE 1

PROPOSED PROPERTY LINE



PRELIMINARY FOR REVIEW ONLY

528 Kansas City St
Rapid City, SD 57701
[P] 605.791.5866
[F] 605.791.5863
[E] engineers@ktmids.com

SE 1/4 OF THE NW1/4