

DOWNTOWN • 610 Quincy St. Rapid City, SD 57701 • (605) 394-6139 or (605) 394-4171

NORTH • 10 Van Buren St. Rapid City, SD 57701 • (605) 716-4098

Date: December 12, 2016
To: Rapid City Public Library Board of Trustees
From: Jennifer Read, Administrative and Facilities Coordinator
Re: Monthly Financial Executive Summary
Period Ending November 30, 2016

Rapid City Public Library's year to date fines and fees revenues, as reflected in [Figure 1](#), totaled \$54,362.71. This is a decrease of 20% compared to the previous year (2015).

1. Revenue from non-resident cards – A decrease in revenue of 6% compared to last year. We currently have 558 non-county users registered.
2. Revenue from copies – There is an increase of 2% for copies this year compared to last year.
3. Revenue from fines – Decreased 32% from this point last year for a difference of \$13,667.65. The decreased amount is due to changes in the DVD policy as well as the total loan limit. We also do not collect fines on digital materials.
4. Revenue from meeting room fees – Increased \$116.50 from this time last year.
5. Revenue from 3D prints and proctoring – Revenue for these two items are \$1,433.60 and \$65 respectively.

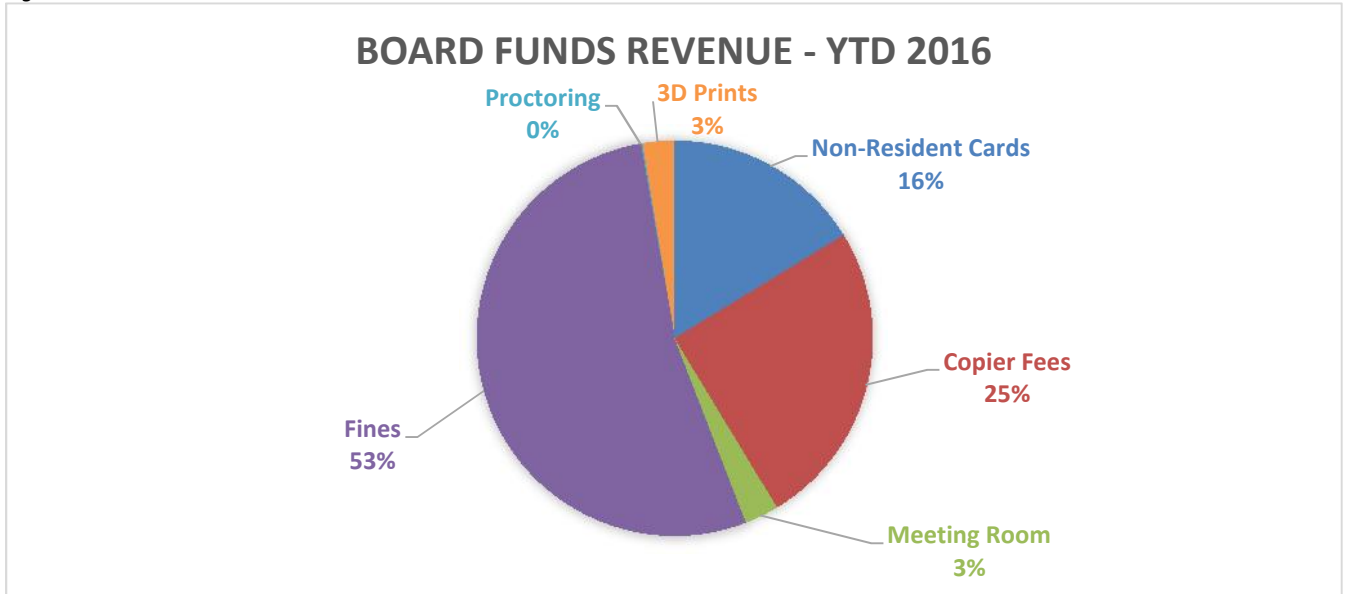
Total expenditures and encumbrances¹ through November were \$3,006,312.73 as reflected in [Figure 2](#). With a budget established at \$3.7 million, approximately 82% was expended as of the end of November. (See [Table 1](#))

1. Salary, Wages and Benefits - Actual expenditures at the end of November 2016 for Salaries, Wages and Benefits totaled \$1,824,107. This is \$45,228 less than last year at this time.
2. Insurance – Expenses in these line items decreased by \$2,370 under the previous year. Actual expenditures in this line item are \$22,685.
3. Professional service expenditures – Increased 30% as compared to the prior year. Expenditures in this line item include facility maintenance services (i.e. window cleaning, HVAC maintenance and pest control), and security services. Security services were added towards the end of last year at the North Library.
4. Rentals – Decreased \$561 since this time last year. Rentals include our costs for leased parking as well as equipment rentals and leased equipment. Our contract costs for copiers have increased over last year by about 5%, plus some costs from last year were carried over to this year's budget.
5. Repair & Maintenance – Decreased 61% compared to the previous year. This line item is for repair costs of both the downtown facility (structure) and equipment, as well as the Integrated Library System. The new ILS, KOHA, is less cost than our previous Millennium service.

¹ Encumbrances: Obligations in the form of purchase orders, contracts or salary commitments which are chargeable to an appropriation and for which a part of the appropriation is reserved. Obligations cease to be encumbrances when paid or when the actual liability is set up.

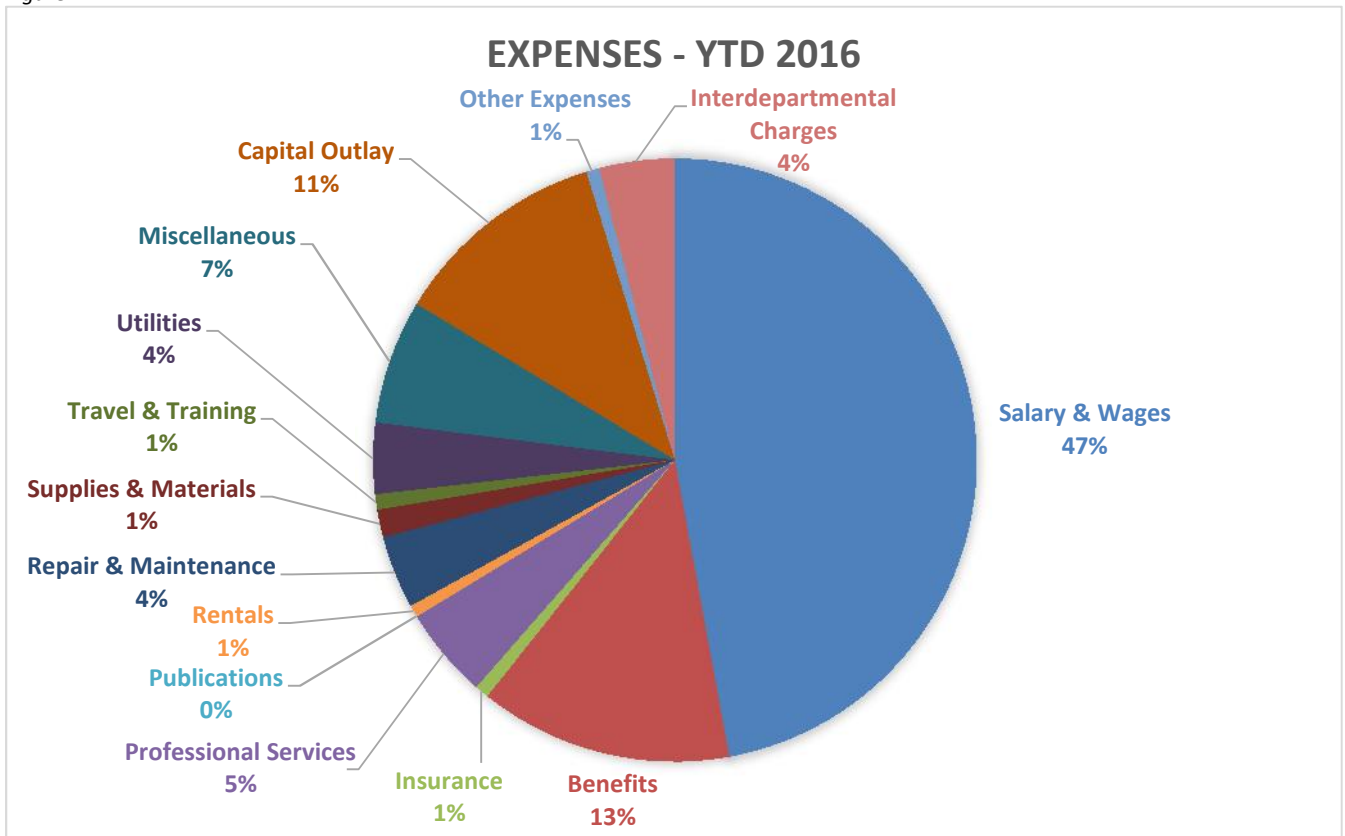
6. Supplies & Materials – Decreased 35% since this time in 2015. Purchases include office supplies, gasoline, facilities uniforms, janitorial supplies, tools, tires, and facility equipment. These purchases are made according to the replacement schedule.
7. Travel & Training – Total expenditures in this line item are \$24,714. Conferences and trainings are scheduled according to the travel and training plan.
8. Utilities – Decreased \$5,336 compared to expenditures for this time last year. Utilities include telephone, internet, natural gas and electricity. The library is experiencing lower costs in electricity due to our energy saving initiatives, including the switching of monitoring of the HVAC to the Energy Plant.
9. Miscellaneous – Decreased 17% over 2015. Expenditures out of this line item include subscriptions to periodicals for patron browsing, programming materials, computers and software and office equipment and these are made according to the technology and equipment replacement schedule. This is an authorized line item name, and planned expenditures that don't fit in any other line item go here.
10. Capital Outlay – Decreased 13% as compared to last year. This line item includes planned purchases for books and other library materials, as well as building improvements and vehicles.
11. Other expenses – Increased 31%, or \$4,915 over last year. This is a pass-thru line item for the Friends of the Library Book Sale area, Friends of the Library memberships, and the Literacy Council. These items do not affect the bottom line. The Friends of the Library Book Shop will now be open all hours the Library is open.

Figure 1



Total Revenues: \$54,362.71

Figure 2



Total Expenditures: \$3,006,312.73

Table 1

YTD Expense Comparison

as of 11/30/16

	YTD '15	YTD '16	More or (Less) than 2015	% +/-
Salary & Wages	1,463,380	1,416,338	(47,042)	-3%
Benefits	405,955	407,769	1,814	0%
Insurance	25,055	22,685	(2,370)	-9%
Professional Services	112,598	146,935	34,337	30%
Rentals	19,832	19,271	(561)	-3%
Repair & Maintenance	300,743	117,602	(183,141)	-61%
Supplies & Materials	68,444	44,762	(23,682)	-35%
Travel & Training	19,404	24,714	5,310	27%
Utilities	119,969	114,633	(5,336)	-4%
Miscellaneous	239,993	200,161	(39,832)	-17%
Capital Outlay	399,720	348,767	(50,953)	-13%
Other Expenses	15,917	20,832	4,915	31%

Table 2

Monthly Vacancy Status Report
as of 11/30/16

LIBRARY DEPARTMENT	FULL AND PART-TIME POSITIONS	FULL AND PART-TIME EMPLOYEES	VACANCIES
Management	2	2	-
Librarian Is	3	3	-
Managers	1	1	-
Coordinators	3	3	-
Business Office	2	2	-
Facilities	3	3	-
Library Associates	17	17	-
Cust. Service Specialists	5	5	-
Outreach	6	6	-
TOTALS	42	42	-

NOTE: Data excludes temporary classifications.

Year to Date Expense Report					
as of 11/30/16					
				Dept. 0609, 0610, 0971	
		Current Year Working Budget	Total Year To Date Encumbrance and Expense	Remaining Budget Balance	Percent Budget Remaining
	4110 Salary & Wages	\$ 1,580,165	\$ 1,381,980	198,185	13%
	4111 Overtime Wages	-	2,179	(2,179)	0%
	4114 FTO/Uniform/Tool/Class IV Pay	-	2,690	(2,690)	0%
	4118 Temporary Wages	31,481	29,488	1,993	6%
	4100 Salary & Wages	1,611,646	1,416,338	195,308	12%
	4120 Social Security	97,743	82,856	14,887	15%
	4121 Medicare	24,041	19,378	4,663	19%
	4130 Retirement	113,314	92,988	20,326	18%
	4131 Section 125 Administration	1,209	404	806	67%
	4140 Workmens Comp	3,822	3,054	768	20%
	4150 Group Health Insurance	236,669	207,558	29,111	12%
	4155 Group Life Insurance	1,850	1,531	319	17%
	4170 Unemployment Insurance	1,647	-	1,647	100%
	4110 Benefits	480,295	407,769	72,526	15%
	4211 General & Auto Liability	6,172	4,552	1,620	26%
	4212 Boiler Coverage	1,506	-	1,506	100%
	4214 Other Insurance	22,660	18,132	4,528	20%
	4210 Insurance	30,338	22,685	7,653	25%
	4223 Consultant Services	21,260	27,390	(6,130)	-29%
	4225 Other Professional Services	121,665	119,544	2,121	2%
	4229 Marketing	1,135	-	1,135	100%
	4220 Professional Services	144,060	146,935	(2,875)	-2%
	4230 Publishing	1,026	152	874	85%
	4230 Publications	1,026	152	874	85%
	4243 Machinery Rentals	4,189	-	4,189	100%
	4244 Lease/Purchases	14,250	15,427	(1,177)	-8%
	4246 Other Rentals	3,581	3,844	(263)	-7%
	4240 Rentals	22,020	19,271	2,749	12%
	4251 Repair - Roll Stock	1,571	411	1,160	74%
	4252 Repair - Structures	38,797	17,813	20,984	54%
	4253 Repair - Equipment	28,852	20,143	8,709	30%
	4255 Repair - Water & Sewer	641	-	641	100%
	4259 Miscellaneous	92,224	79,235	12,989	14%
	4250 Repair & Maintenance	162,085	117,602	44,483	27%
	4261 Office Supplies	42,210	30,206	12,004	28%
	4262 Gasoline, Oil, Fuel	2,584	1,509	1,075	42%
	4263 Clothing, Food	1,514	647	867	57%
	4264 Janitor & Chemical Supplies	20,901	11,393	9,508	45%
	4265 Minor Tools	4,200	483	3,717	88%
	4266 Agricultural Supply	-	-	-	0%
	4267 Tires	800	504	296	37%
	4269 Misc Supplies & Materials	-	20	(20)	0%
	4260 Supplies & Materials	72,209	44,762	27,447	38%
	4270 Travel & Training	22,310	24,714	(2,404)	-11%
	4270 Travel & Training	22,310	24,714	(2,404)	-11%
	4281 Telephone - Local	41,440	24,313	17,127	41%
	4282 Natural Gas	18,053	11,405	6,648	37%
	4283 Electricity	106,206	78,496	27,710	26%
	4287 Drainage Fees	-	418	(418)	0%
	4280 Utilities	165,699	114,633	51,066	31%
	4292 Dues	2,501	2,017	484	19%
	4293 Subscriptions	92,338	86,032	6,306	7%
	4294 Other Miscellaneous Expenses	25,696	27,788	(2,092)	-8%
	4295 Computers & Software	129,860	66,650	63,210	49%
	4296 Office Equipment	33,727	17,673	16,054	48%
	4290 Miscellaneous	284,122	200,161	83,961	30%
	4320 Buildings & Structures	124,735	15,801	108,934	87%
	4341 General Materials	158,460	134,377	24,083	15%
	4342 Books/AV Processing	19,124	18,090	1,034	5%
	4345 Electronic Resources	124,947	116,494	8,453	7%
	4346 DVDs	34,901	31,178	3,723	11%
	4348 Interactive Materials	4,000	3,938	62	2%
	4350 Furniture & Minor Equipment	41,700	-	41,700	100%
	4360 Library Machinery	-	28,889	(28,889)	0%
	4390 Library Other Capital	29,000	-	29,000	100%
	4300 Capital Outlay	536,867	348,767	159,100	30%
	4530 Refund or Reimbursement	17,046	20,832	(3,786)	-22%
	4500 Other Expenses	17,046	20,832	(3,786)	-22%
	*SUB-TOTAL	3,549,723	2,884,620	665,103	19%
	4226 Interdepartmental Charges	132,749	121,693	11,056	8%
	4226 Interdepartmental Charges	132,749	121,693	11,056	8%
	*SUB-TOTAL	3,682,472	3,006,313	676,159	18%
	**Total LIBRARY	\$ 3,682,472	\$ 3,006,313	\$ 676,159	18%

The City of Rapid City
Bill List by Vendor - Detail

Vendor #	Invoice #	PO #	Vendor Name	GL Account	Line Item Description	Line Item Amount
7810	1610.5	54009	ACV2 ARCHITECTURE LLC	10100609-422500	STRUCTURE	404.05
	1610.15	54329	ACV2 ARCHITECTURE LLC	10100609-422500	STRUCTURE	5,219.52
					ACV2 ARCHITECTURE LLC Total:	5,623.57
170	260072055012	54459	AMAZON.COM CREDIT	10100609-434100	GENERAL MATERIALS	152.28
	028431121901	54460	AMAZON.COM CREDIT	10100609-434100	GENERAL MATERIALS	8.84
	190040422353	54461	AMAZON.COM CREDIT	10100609-434100	GENERAL MATERIALS	12.16
	184149183267	54462	AMAZON.COM CREDIT	10100609-434100	GENERAL MATERIALS	16.99
	272724175659	54457	AMAZON.COM CREDIT	10100609-434100	GENERAL MATERIALS	6.28
	006093680866	54458	AMAZON.COM CREDIT	10100609-434100	GENERAL MATERIALS	9.98
	125892044275	55305	AMAZON.COM CREDIT	10100610-434100	GENERAL MATERIALS	8.99
	184142527350	55307	AMAZON.COM CREDIT	10100610-434100	GENERAL MATERIALS	17.98
					AMAZON.COM CREDIT Total:	233.50
7956	09/16/16	53288	ANTONMARCHI, LAUREL	10100609-422500	PROGRAMMING-ADULT	50.00
					ANTONMARCHI, LAUREL Total:	50.00
356	2032345632	53188	BAKER & TAYLOR BOOKS	10100609-434100	GENERAL MATERIALS	19.02
	2032391700	53390	BAKER & TAYLOR BOOKS	10100609-434100	GENERAL MATERIALS	31.98
	2032391701	53391	BAKER & TAYLOR BOOKS	10100609-434100	GENERAL MATERIALS	25.98
	2032391702	53392	BAKER & TAYLOR BOOKS	10100609-434100	GENERAL MATERIALS	8.38
	2032391703	53393	BAKER & TAYLOR BOOKS	10100609-434100	GENERAL MATERIALS	22.75
	2032421553	55101	BAKER & TAYLOR BOOKS	10100609-434100	GENERAL MATERIALS	24.06
	2032421554	55102	BAKER & TAYLOR BOOKS	10100609-434100	GENERAL MATERIALS	7.83
	2032407921	54391	BAKER & TAYLOR BOOKS	10100609-434100	GENERAL MATERIALS	15.65
	2032407922	54392	BAKER & TAYLOR BOOKS	10100609-434100	GENERAL MATERIALS	23.44
	2032407923	54393	BAKER & TAYLOR BOOKS	10100609-434100	GENERAL MATERIALS	20.54
	2032407924	54394	BAKER & TAYLOR BOOKS	10100609-434100	GENERAL MATERIALS	5.99
	2032405454	54385	BAKER & TAYLOR BOOKS	10100609-434100	GENERAL MATERIALS	9.51

356	2032405455	54386	BAKER & TAYLOR BOOKS	10100609-434100	GENERAL MATERIALS	78.95
	2032405456	54387	BAKER & TAYLOR BOOKS	10100609-434100	GENERAL MATERIALS	16.23
	2032405457	54388	BAKER & TAYLOR BOOKS	10100609-434100	GENERAL MATERIALS	34.76
	2032407919	54389	BAKER & TAYLOR BOOKS	10100609-434100	GENERAL MATERIALS	44.04
	2032407920	54390	BAKER & TAYLOR BOOKS	10100609-434100	GENERAL MATERIALS	15.12
	2032401528	54379	BAKER & TAYLOR BOOKS	10100609-434100	GENERAL MATERIALS	16.80
	2032405449	54380	BAKER & TAYLOR BOOKS	10100609-434100	GENERAL MATERIALS	16.23
	2032405450	54381	BAKER & TAYLOR BOOKS	10100609-434100	GENERAL MATERIALS	10.19
	2032405451	54382	BAKER & TAYLOR BOOKS	10100609-434100	GENERAL MATERIALS	32.46
	2032405452	54383	BAKER & TAYLOR BOOKS	10100609-434100	GENERAL MATERIALS	16.23
	2032405453	54384	BAKER & TAYLOR BOOKS	10100609-434100	GENERAL MATERIALS	28.76
	2032401522	54372	BAKER & TAYLOR BOOKS	10100609-434100	GENERAL MATERIALS	138.28
	2032401523	54373	BAKER & TAYLOR BOOKS	10100609-434100	GENERAL MATERIALS	39.19
	2032401524	54374	BAKER & TAYLOR BOOKS	10100609-434100	GENERAL MATERIALS	48.88
	2032401525	54376	BAKER & TAYLOR BOOKS	10100609-434100	GENERAL MATERIALS	36.40
	2032401526	54377	BAKER & TAYLOR BOOKS	10100609-434100	GENERAL MATERIALS	133.25
	2032401527	54378	BAKER & TAYLOR BOOKS	10100609-434100	GENERAL MATERIALS	147.42
	2032378216	53885	BAKER & TAYLOR BOOKS	10100609-434100	GENERAL MATERIALS	97.34
	2032345629	53981	BAKER & TAYLOR BOOKS	10100609-434100	GENERAL MATERIALS	16.17
	2032401518	54368	BAKER & TAYLOR BOOKS	10100609-434100	GENERAL MATERIALS	184.56
	2032401519	54369	BAKER & TAYLOR BOOKS	10100609-434100	GENERAL MATERIALS	16.23
	2032401520	54370	BAKER & TAYLOR BOOKS	10100609-434100	GENERAL MATERIALS	7.83
	2032401521	54371	BAKER & TAYLOR BOOKS	10100609-434100	GENERAL MATERIALS	4.77
	2032378213	53878	BAKER & TAYLOR BOOKS	10100609-434100	GENERAL MATERIALS	46.42
	2032357781	53880	BAKER & TAYLOR BOOKS	10100609-434100	GENERAL MATERIALS	15.65
	2032357782	53881	BAKER & TAYLOR BOOKS	10100609-434100	GENERAL MATERIALS	44.78
	2032357783	53882	BAKER & TAYLOR BOOKS	10100609-434100	GENERAL MATERIALS	14.00
	2032378214	53883	BAKER & TAYLOR BOOKS	10100609-434100	GENERAL MATERIALS	30.84
	2032378215	53884	BAKER & TAYLOR BOOKS	10100609-434100	GENERAL MATERIALS	10.19
	2032371732	53872	BAKER & TAYLOR BOOKS	10100609-434100	GENERAL MATERIALS	8.50

356	2032371733	53873	BAKER & TAYLOR BOOKS	10100609-434100	GENERAL MATERIALS	14.21
	2032378209	53874	BAKER & TAYLOR BOOKS	10100609-434100	GENERAL MATERIALS	18.97
	2032378210	53875	BAKER & TAYLOR BOOKS	10100609-434100	GENERAL MATERIALS	7.79
	2032378211	53876	BAKER & TAYLOR BOOKS	10100609-434100	GENERAL MATERIALS	29.68
	2032378212	53877	BAKER & TAYLOR BOOKS	10100609-434100	GENERAL MATERIALS	40.60
	2032371726	53866	BAKER & TAYLOR BOOKS	10100609-434100	GENERAL MATERIALS	28.42
	2032371727	53867	BAKER & TAYLOR BOOKS	10100609-434100	GENERAL MATERIALS	26.84
	2032371728	53868	BAKER & TAYLOR BOOKS	10100609-434100	GENERAL MATERIALS	14.20
	2032371729	53869	BAKER & TAYLOR BOOKS	10100609-434100	GENERAL MATERIALS	10.26
	2032371730	53870	BAKER & TAYLOR BOOKS	10100609-434100	GENERAL MATERIALS	10.79
	2032371731	53871	BAKER & TAYLOR BOOKS	10100609-434100	GENERAL MATERIALS	59.89
	2032378220	53854	BAKER & TAYLOR BOOKS	10100609-434100	GENERAL MATERIALS	9.60
	2032378221	53855	BAKER & TAYLOR BOOKS	10100609-434100	GENERAL MATERIALS	16.21
	2032378222	53856	BAKER & TAYLOR BOOKS	10100609-434100	GENERAL MATERIALS	19.60
	2032378223	53857	BAKER & TAYLOR BOOKS	10100609-434100	GENERAL MATERIALS	40.81
	2032371724	53864	BAKER & TAYLOR BOOKS	10100609-434100	GENERAL MATERIALS	49.19
	2032371725	53865	BAKER & TAYLOR BOOKS	10100609-434100	GENERAL MATERIALS	14.21
	2032371721	53846	BAKER & TAYLOR BOOKS	10100609-434100	GENERAL MATERIALS	13.43
	2032371722	53847	BAKER & TAYLOR BOOKS	10100609-434100	GENERAL MATERIALS	77.68
	2032371723	53848	BAKER & TAYLOR BOOKS	10100609-434100	GENERAL MATERIALS	66.23
	2032378217	53851	BAKER & TAYLOR BOOKS	10100609-434100	GENERAL MATERIALS	48.63
	2032378218	53852	BAKER & TAYLOR BOOKS	10100609-434100	GENERAL MATERIALS	19.60
	2032378219	53853	BAKER & TAYLOR BOOKS	10100609-434100	GENERAL MATERIALS	68.13
	2032371715	53840	BAKER & TAYLOR BOOKS	10100609-434100	GENERAL MATERIALS	13.99
	2032371716	53841	BAKER & TAYLOR BOOKS	10100609-434100	GENERAL MATERIALS	68.49
	2032371717	53842	BAKER & TAYLOR BOOKS	10100609-434100	GENERAL MATERIALS	174.05
	2032371718	53843	BAKER & TAYLOR BOOKS	10100609-434100	GENERAL MATERIALS	50.44
	2032371719	53844	BAKER & TAYLOR BOOKS	10100609-434100	GENERAL MATERIALS	87.42
	2032371720	53845	BAKER & TAYLOR BOOKS	10100609-434100	GENERAL MATERIALS	142.74
	2032357788	53834	BAKER & TAYLOR BOOKS	10100609-434100	GENERAL MATERIALS	14.21

356	2032357789	53835	BAKER & TAYLOR BOOKS	10100609-434100	GENERAL MATERIALS	16.24
	2032371711	53836	BAKER & TAYLOR BOOKS	10100609-434100	GENERAL MATERIALS	38.26
	2032371712	53837	BAKER & TAYLOR BOOKS	10100609-434100	GENERAL MATERIALS	325.41
	2032371713	53838	BAKER & TAYLOR BOOKS	10100609-434100	GENERAL MATERIALS	32.44
	2032371714	53839	BAKER & TAYLOR BOOKS	10100609-434100	GENERAL MATERIALS	10.26
	2032391722	53412	BAKER & TAYLOR BOOKS	10100609-434100	GENERAL MATERIALS	15.68
	2032391723	53413	BAKER & TAYLOR BOOKS	10100609-434100	GENERAL MATERIALS	4.79
	2032357784	53830	BAKER & TAYLOR BOOKS	10100609-434100	GENERAL MATERIALS	24.11
	2032357785	53831	BAKER & TAYLOR BOOKS	10100609-434100	GENERAL MATERIALS	43.11
	2032357786	53832	BAKER & TAYLOR BOOKS	10100609-434100	GENERAL MATERIALS	48.72
	2032357787	53833	BAKER & TAYLOR BOOKS	10100609-434100	GENERAL MATERIALS	1,176.27
	2032391716	53406	BAKER & TAYLOR BOOKS	10100609-434100	GENERAL MATERIALS	12.99
	2032391717	53407	BAKER & TAYLOR BOOKS	10100609-434100	GENERAL MATERIALS	44.21
	2032391718	53408	BAKER & TAYLOR BOOKS	10100609-434100	GENERAL MATERIALS	13.42
	2032391719	53409	BAKER & TAYLOR BOOKS	10100609-434100	GENERAL MATERIALS	7.81
	2032391720	53410	BAKER & TAYLOR BOOKS	10100609-434100	GENERAL MATERIALS	16.24
	2032391721	53411	BAKER & TAYLOR BOOKS	10100609-434100	GENERAL MATERIALS	15.09
	2032391710	53400	BAKER & TAYLOR BOOKS	10100609-434100	GENERAL MATERIALS	99.99
	2032391711	53401	BAKER & TAYLOR BOOKS	10100609-434100	GENERAL MATERIALS	37.04
	2032391712	53402	BAKER & TAYLOR BOOKS	10100609-434100	GENERAL MATERIALS	62.15
	2032391713	53403	BAKER & TAYLOR BOOKS	10100609-434100	GENERAL MATERIALS	194.64
	2032391714	53404	BAKER & TAYLOR BOOKS	10100609-434100	GENERAL MATERIALS	141.05
	2032391715	53405	BAKER & TAYLOR BOOKS	10100609-434100	GENERAL MATERIALS	33.24
	2032391704	53394	BAKER & TAYLOR BOOKS	10100609-434100	GENERAL MATERIALS	65.55
	2032391705	53395	BAKER & TAYLOR BOOKS	10100609-434100	GENERAL MATERIALS	16.80
	2032391706	53396	BAKER & TAYLOR BOOKS	10100609-434100	GENERAL MATERIALS	45.31
	2032391707	53397	BAKER & TAYLOR BOOKS	10100609-434100	GENERAL MATERIALS	78.23
	2032391708	53398	BAKER & TAYLOR BOOKS	10100609-434100	GENERAL MATERIALS	8.99
	2032391709	53399	BAKER & TAYLOR BOOKS	10100609-434100	GENERAL MATERIALS	10.79
	2032345632	53188	BAKER & TAYLOR BOOKS	10100609-434200	GENERAL MATERIALS	2.10

356	2032391700	53390	BAKER & TAYLOR BOOKS	10100609-434200	GENERAL MATERIALS	1.30
	2032391701	53391	BAKER & TAYLOR BOOKS	10100609-434200	GENERAL MATERIALS	0.80
	2032391702	53392	BAKER & TAYLOR BOOKS	10100609-434200	GENERAL MATERIALS	0.65
	2032421554	55102	BAKER & TAYLOR BOOKS	10100609-434200	GENERAL MATERIALS	0.40
	2032421557	55105	BAKER & TAYLOR BOOKS	10100609-434200	GENERAL MATERIALS	1.05
	2032421553	55101	BAKER & TAYLOR BOOKS	10100609-434200	GENERAL MATERIALS	2.10
	2032407920	54390	BAKER & TAYLOR BOOKS	10100609-434200	GENERAL MATERIALS	1.05
	2032407921	54391	BAKER & TAYLOR BOOKS	10100609-434200	GENERAL MATERIALS	1.05
	2032407922	54392	BAKER & TAYLOR BOOKS	10100609-434200	GENERAL MATERIALS	1.30
	2032407923	54393	BAKER & TAYLOR BOOKS	10100609-434200	GENERAL MATERIALS	1.45
	2032407924	54394	BAKER & TAYLOR BOOKS	10100609-434200	GENERAL MATERIALS	0.40
	2032405453	54384	BAKER & TAYLOR BOOKS	10100609-434200	GENERAL MATERIALS	1.30
	2032405454	54385	BAKER & TAYLOR BOOKS	10100609-434200	GENERAL MATERIALS	0.90
	2032405455	54386	BAKER & TAYLOR BOOKS	10100609-434200	GENERAL MATERIALS	6.30
	2032405456	54387	BAKER & TAYLOR BOOKS	10100609-434200	GENERAL MATERIALS	1.05
	2032405457	54388	BAKER & TAYLOR BOOKS	10100609-434200	GENERAL MATERIALS	2.00
	2032407919	54389	BAKER & TAYLOR BOOKS	10100609-434200	GENERAL MATERIALS	2.90
	2032401527	54378	BAKER & TAYLOR BOOKS	10100609-434200	GENERAL MATERIALS	7.70
	2032401528	54379	BAKER & TAYLOR BOOKS	10100609-434200	GENERAL MATERIALS	1.05
	2032405449	54380	BAKER & TAYLOR BOOKS	10100609-434200	GENERAL MATERIALS	1.05
	2032405450	54381	BAKER & TAYLOR BOOKS	10100609-434200	GENERAL MATERIALS	0.40
	2032405451	54382	BAKER & TAYLOR BOOKS	10100609-434200	GENERAL MATERIALS	2.10
	2032405452	54383	BAKER & TAYLOR BOOKS	10100609-434200	GENERAL MATERIALS	1.05
	2032401521	54371	BAKER & TAYLOR BOOKS	10100609-434200	GENERAL MATERIALS	0.40
	2032401522	54372	BAKER & TAYLOR BOOKS	10100609-434200	GENERAL MATERIALS	8.80
	2032401523	54373	BAKER & TAYLOR BOOKS	10100609-434200	GENERAL MATERIALS	2.35
	2032401524	54374	BAKER & TAYLOR BOOKS	10100609-434200	GENERAL MATERIALS	2.75
	2032401525	54376	BAKER & TAYLOR BOOKS	10100609-434200	GENERAL MATERIALS	2.10
	2032401526	54377	BAKER & TAYLOR BOOKS	10100609-434200	GENERAL MATERIALS	9.45
	2032378215	53884	BAKER & TAYLOR BOOKS	10100609-434200	GENERAL MATERIALS	0.25

356	2032378216	53885	BAKER & TAYLOR BOOKS	10100609-434200	GENERAL MATERIALS	7.35
	2032345629	53981	BAKER & TAYLOR BOOKS	10100609-434200	GENERAL MATERIALS	1.20
	2032401518	54368	BAKER & TAYLOR BOOKS	10100609-434200	GENERAL MATERIALS	10.65
	2032401519	54369	BAKER & TAYLOR BOOKS	10100609-434200	GENERAL MATERIALS	1.05
	2032401520	54370	BAKER & TAYLOR BOOKS	10100609-434200	GENERAL MATERIALS	0.25
	2032378212	53877	BAKER & TAYLOR BOOKS	10100609-434200	GENERAL MATERIALS	0.65
	2032378213	53878	BAKER & TAYLOR BOOKS	10100609-434200	GENERAL MATERIALS	3.15
	2032357781	53880	BAKER & TAYLOR BOOKS	10100609-434200	GENERAL MATERIALS	1.05
	2032357782	53881	BAKER & TAYLOR BOOKS	10100609-434200	GENERAL MATERIALS	3.15
	2032357783	53882	BAKER & TAYLOR BOOKS	10100609-434200	GENERAL MATERIALS	1.05
	2032378214	53883	BAKER & TAYLOR BOOKS	10100609-434200	GENERAL MATERIALS	1.45
	2032371731	53871	BAKER & TAYLOR BOOKS	10100609-434200	GENERAL MATERIALS	2.35
	2032371732	53872	BAKER & TAYLOR BOOKS	10100609-434200	GENERAL MATERIALS	0.25
	2032371733	53873	BAKER & TAYLOR BOOKS	10100609-434200	GENERAL MATERIALS	1.05
	2032378209	53874	BAKER & TAYLOR BOOKS	10100609-434200	GENERAL MATERIALS	1.85
	2032378210	53875	BAKER & TAYLOR BOOKS	10100609-434200	GENERAL MATERIALS	0.25
	2032378211	53876	BAKER & TAYLOR BOOKS	10100609-434200	GENERAL MATERIALS	2.10
	2032371725	53865	BAKER & TAYLOR BOOKS	10100609-434200	GENERAL MATERIALS	1.05
	2032371726	53866	BAKER & TAYLOR BOOKS	10100609-434200	GENERAL MATERIALS	2.10
	2032371727	53867	BAKER & TAYLOR BOOKS	10100609-434200	GENERAL MATERIALS	2.10
	2032371728	53868	BAKER & TAYLOR BOOKS	10100609-434200	GENERAL MATERIALS	0.50
	2032371729	53869	BAKER & TAYLOR BOOKS	10100609-434200	GENERAL MATERIALS	0.25
	2032371730	53870	BAKER & TAYLOR BOOKS	10100609-434200	GENERAL MATERIALS	0.40
	2032378219	53853	BAKER & TAYLOR BOOKS	10100609-434200	GENERAL MATERIALS	1.70
	2032378220	53854	BAKER & TAYLOR BOOKS	10100609-434200	GENERAL MATERIALS	0.40
	2032378221	53855	BAKER & TAYLOR BOOKS	10100609-434200	GENERAL MATERIALS	1.05
	2032378222	53856	BAKER & TAYLOR BOOKS	10100609-434200	GENERAL MATERIALS	1.05
	2032378223	53857	BAKER & TAYLOR BOOKS	10100609-434200	GENERAL MATERIALS	1.95
	2032371724	53864	BAKER & TAYLOR BOOKS	10100609-434200	GENERAL MATERIALS	1.20
	2032371720	53845	BAKER & TAYLOR BOOKS	10100609-434200	GENERAL MATERIALS	4.85

356	2032371721	53846	BAKER & TAYLOR BOOKS	10100609-434200	GENERAL MATERIALS	1.05
	2032371722	53847	BAKER & TAYLOR BOOKS	10100609-434200	GENERAL MATERIALS	1.80
	2032371723	53848	BAKER & TAYLOR BOOKS	10100609-434200	GENERAL MATERIALS	1.95
	2032378217	53851	BAKER & TAYLOR BOOKS	10100609-434200	GENERAL MATERIALS	2.65
	2032378218	53852	BAKER & TAYLOR BOOKS	10100609-434200	GENERAL MATERIALS	1.05
	2032371714	53839	BAKER & TAYLOR BOOKS	10100609-434200	GENERAL MATERIALS	0.80
	2032371715	53840	BAKER & TAYLOR BOOKS	10100609-434200	GENERAL MATERIALS	0.40
	2032371716	53841	BAKER & TAYLOR BOOKS	10100609-434200	GENERAL MATERIALS	1.60
	2032371717	53842	BAKER & TAYLOR BOOKS	10100609-434200	GENERAL MATERIALS	12.35
	2032371718	53843	BAKER & TAYLOR BOOKS	10100609-434200	GENERAL MATERIALS	2.50
	2032371719	53844	BAKER & TAYLOR BOOKS	10100609-434200	GENERAL MATERIALS	4.10
	2032357787	53833	BAKER & TAYLOR BOOKS	10100609-434200	GENERAL MATERIALS	52.05
	2032357788	53834	BAKER & TAYLOR BOOKS	10100609-434200	GENERAL MATERIALS	1.05
	2032357789	53835	BAKER & TAYLOR BOOKS	10100609-434200	GENERAL MATERIALS	1.05
	2032371711	53836	BAKER & TAYLOR BOOKS	10100609-434200	GENERAL MATERIALS	1.95
	2032371712	53837	BAKER & TAYLOR BOOKS	10100609-434200	GENERAL MATERIALS	12.35
	2032371713	53838	BAKER & TAYLOR BOOKS	10100609-434200	GENERAL MATERIALS	2.75
	2032391721	53411	BAKER & TAYLOR BOOKS	10100609-434200	GENERAL MATERIALS	1.05
	2032391722	53412	BAKER & TAYLOR BOOKS	10100609-434200	GENERAL MATERIALS	1.05
	2032391723	53413	BAKER & TAYLOR BOOKS	10100609-434200	GENERAL MATERIALS	0.40
	2032357784	53830	BAKER & TAYLOR BOOKS	10100609-434200	GENERAL MATERIALS	1.30
	2032357785	53831	BAKER & TAYLOR BOOKS	10100609-434200	GENERAL MATERIALS	3.15
	2032357786	53832	BAKER & TAYLOR BOOKS	10100609-434200	GENERAL MATERIALS	2.65
	2032391715	53405	BAKER & TAYLOR BOOKS	10100609-434200	GENERAL MATERIALS	0.40
	2032391716	53406	BAKER & TAYLOR BOOKS	10100609-434200	GENERAL MATERIALS	0.40
	2032391717	53407	BAKER & TAYLOR BOOKS	10100609-434200	GENERAL MATERIALS	2.50
	2032391718	53408	BAKER & TAYLOR BOOKS	10100609-434200	GENERAL MATERIALS	1.05
	2032391719	53409	BAKER & TAYLOR BOOKS	10100609-434200	GENERAL MATERIALS	0.40
	2032391720	53410	BAKER & TAYLOR BOOKS	10100609-434200	GENERAL MATERIALS	1.05
	2032391709	53399	BAKER & TAYLOR BOOKS	10100609-434200	GENERAL MATERIALS	0.25

356	2032391710	53400	BAKER & TAYLOR BOOKS	10100609-434200	GENERAL MATERIALS	4.45
	2032391711	53401	BAKER & TAYLOR BOOKS	10100609-434200	GENERAL MATERIALS	0.40
	2032391712	53402	BAKER & TAYLOR BOOKS	10100609-434200	GENERAL MATERIALS	3.55
	2032391713	53403	BAKER & TAYLOR BOOKS	10100609-434200	GENERAL MATERIALS	5.90
	2032391714	53404	BAKER & TAYLOR BOOKS	10100609-434200	GENERAL MATERIALS	7.25
	2032391703	53393	BAKER & TAYLOR BOOKS	10100609-434200	GENERAL MATERIALS	1.15
	2032391704	53394	BAKER & TAYLOR BOOKS	10100609-434200	GENERAL MATERIALS	1.05
	2032391705	53395	BAKER & TAYLOR BOOKS	10100609-434200	GENERAL MATERIALS	1.05
	2032391706	53396	BAKER & TAYLOR BOOKS	10100609-434200	GENERAL MATERIALS	3.15
	2032391707	53397	BAKER & TAYLOR BOOKS	10100609-434200	GENERAL MATERIALS	5.65
	2032391708	53398	BAKER & TAYLOR BOOKS	10100609-434200	GENERAL MATERIALS	0.25
	2032421550	55084	BAKER & TAYLOR BOOKS	10100610-434100	GENERAL MATERIALS	295.91
	2032421551	55099	BAKER & TAYLOR BOOKS	10100610-434100	GENERAL MATERIALS	30.21
	2032421552	55100	BAKER & TAYLOR BOOKS	10100610-434100	GENERAL MATERIALS	21.91
	2032421555	55103	BAKER & TAYLOR BOOKS	10100610-434100	GENERAL MATERIALS	10.07
	2032421556	55104	BAKER & TAYLOR BOOKS	10100610-434100	GENERAL MATERIALS	31.90
	2032421557	55105	BAKER & TAYLOR BOOKS	10100610-434100	GENERAL MATERIALS	15.12
	2032430974	55161	BAKER & TAYLOR BOOKS	10100610-434100	GENERAL MATERIALS	9.51
	2032430975	55162	BAKER & TAYLOR BOOKS	10100610-434100	GENERAL MATERIALS	20.99
	2032430976	55163	BAKER & TAYLOR BOOKS	10100610-434100	GENERAL MATERIALS	15.12
	2032430977	55165	BAKER & TAYLOR BOOKS	10100610-434100	GENERAL MATERIALS	15.12
	2032430978	55167	BAKER & TAYLOR BOOKS	10100610-434100	GENERAL MATERIALS	2,216.05
	2032430979	55168	BAKER & TAYLOR BOOKS	10100610-434100	GENERAL MATERIALS	16.80
	2032427799	55152	BAKER & TAYLOR BOOKS	10100610-434100	GENERAL MATERIALS	47.04
	2032427800	55155	BAKER & TAYLOR BOOKS	10100610-434100	GENERAL MATERIALS	16.23
	2032427801	55157	BAKER & TAYLOR BOOKS	10100610-434100	GENERAL MATERIALS	47.04
	2032427802	55158	BAKER & TAYLOR BOOKS	10100610-434100	GENERAL MATERIALS	39.25
	2032427803	55159	BAKER & TAYLOR BOOKS	10100610-434100	GENERAL MATERIALS	15.68
	2032430973	55160	BAKER & TAYLOR BOOKS	10100610-434100	GENERAL MATERIALS	14.99
	2032424946	55141	BAKER & TAYLOR BOOKS	10100610-434100	GENERAL MATERIALS	43.92

356	2032427794	55143	BAKER & TAYLOR BOOKS	10100610-434100	GENERAL MATERIALS	33.43
	2032427795	55145	BAKER & TAYLOR BOOKS	10100610-434100	GENERAL MATERIALS	114.82
	2032427796	55146	BAKER & TAYLOR BOOKS	10100610-434100	GENERAL MATERIALS	11.97
	2032427797	55148	BAKER & TAYLOR BOOKS	10100610-434100	GENERAL MATERIALS	9.51
	2032427798	55150	BAKER & TAYLOR BOOKS	10100610-434100	GENERAL MATERIALS	17.05
	2032424940	55133	BAKER & TAYLOR BOOKS	10100610-434100	GENERAL MATERIALS	316.31
	2032424941	55134	BAKER & TAYLOR BOOKS	10100610-434100	GENERAL MATERIALS	444.92
	2032424942	55136	BAKER & TAYLOR BOOKS	10100610-434100	GENERAL MATERIALS	16.23
	2032424943	55137	BAKER & TAYLOR BOOKS	10100610-434100	GENERAL MATERIALS	21.38
	2032424944	55139	BAKER & TAYLOR BOOKS	10100610-434100	GENERAL MATERIALS	13.97
	2032424945	55140	BAKER & TAYLOR BOOKS	10100610-434100	GENERAL MATERIALS	13.30
	2032421564	55124	BAKER & TAYLOR BOOKS	10100610-434100	GENERAL MATERIALS	12.63
	2032421565	55125	BAKER & TAYLOR BOOKS	10100610-434100	GENERAL MATERIALS	11.19
	2032421566	55127	BAKER & TAYLOR BOOKS	10100610-434100	GENERAL MATERIALS	15.12
	2032421567	55129	BAKER & TAYLOR BOOKS	10100610-434100	GENERAL MATERIALS	9.57
	2032424938	55130	BAKER & TAYLOR BOOKS	10100610-434100	GENERAL MATERIALS	16.23
	2032424939	55132	BAKER & TAYLOR BOOKS	10100610-434100	GENERAL MATERIALS	504.31
	2032421558	55112	BAKER & TAYLOR BOOKS	10100610-434100	GENERAL MATERIALS	72.22
	2032421559	55113	BAKER & TAYLOR BOOKS	10100610-434100	GENERAL MATERIALS	72.92
	2032421560	55114	BAKER & TAYLOR BOOKS	10100610-434100	GENERAL MATERIALS	34.79
	2032421561	55121	BAKER & TAYLOR BOOKS	10100610-434100	GENERAL MATERIALS	57.56
	2032421562	55122	BAKER & TAYLOR BOOKS	10100610-434100	GENERAL MATERIALS	157.82
	2032421563	55123	BAKER & TAYLOR BOOKS	10100610-434100	GENERAL MATERIALS	12.99
	2032421550	55084	BAKER & TAYLOR BOOKS	10100610-434200	GENERAL MATERIALS	9.70
	2032421551	55099	BAKER & TAYLOR BOOKS	10100610-434200	GENERAL MATERIALS	1.95
	2032421552	55100	BAKER & TAYLOR BOOKS	10100610-434200	GENERAL MATERIALS	2.10
	2032421555	55103	BAKER & TAYLOR BOOKS	10100610-434200	GENERAL MATERIALS	0.40
	2032421556	55104	BAKER & TAYLOR BOOKS	10100610-434200	GENERAL MATERIALS	2.10
	2032421558	55112	BAKER & TAYLOR BOOKS	10100610-434200	GENERAL MATERIALS	5.25
	2032430975	55162	BAKER & TAYLOR BOOKS	10100610-434200	GENERAL MATERIALS	0.25

356	2032430976	55163	BAKER & TAYLOR BOOKS	10100610-434200	GENERAL MATERIALS	1.05
	2032430977	55165	BAKER & TAYLOR BOOKS	10100610-434200	GENERAL MATERIALS	1.05
	2032430978	55167	BAKER & TAYLOR BOOKS	10100610-434200	GENERAL MATERIALS	95.15
	2032430979	55168	BAKER & TAYLOR BOOKS	10100610-434200	GENERAL MATERIALS	1.05
	2032427800	55155	BAKER & TAYLOR BOOKS	10100610-434200	GENERAL MATERIALS	1.05
	2032427801	55157	BAKER & TAYLOR BOOKS	10100610-434200	GENERAL MATERIALS	2.90
	2032427802	55158	BAKER & TAYLOR BOOKS	10100610-434200	GENERAL MATERIALS	2.50
	2032427803	55159	BAKER & TAYLOR BOOKS	10100610-434200	GENERAL MATERIALS	1.05
	2032430973	55160	BAKER & TAYLOR BOOKS	10100610-434200	GENERAL MATERIALS	0.40
	2032430974	55161	BAKER & TAYLOR BOOKS	10100610-434200	GENERAL MATERIALS	1.05
	2032427794	55143	BAKER & TAYLOR BOOKS	10100610-434200	GENERAL MATERIALS	2.00
	2032427795	55145	BAKER & TAYLOR BOOKS	10100610-434200	GENERAL MATERIALS	7.50
	2032427796	55146	BAKER & TAYLOR BOOKS	10100610-434200	GENERAL MATERIALS	0.40
	2032427797	55148	BAKER & TAYLOR BOOKS	10100610-434200	GENERAL MATERIALS	0.25
	2032427798	55150	BAKER & TAYLOR BOOKS	10100610-434200	GENERAL MATERIALS	0.90
	2032427799	55152	BAKER & TAYLOR BOOKS	10100610-434200	GENERAL MATERIALS	3.15
	2032424941	55134	BAKER & TAYLOR BOOKS	10100610-434200	GENERAL MATERIALS	15.15
	2032424942	55136	BAKER & TAYLOR BOOKS	10100610-434200	GENERAL MATERIALS	1.05
	2032424943	55137	BAKER & TAYLOR BOOKS	10100610-434200	GENERAL MATERIALS	1.45
	2032424944	55139	BAKER & TAYLOR BOOKS	10100610-434200	GENERAL MATERIALS	1.05
	2032424945	55140	BAKER & TAYLOR BOOKS	10100610-434200	GENERAL MATERIALS	0.40
	2032424946	55141	BAKER & TAYLOR BOOKS	10100610-434200	GENERAL MATERIALS	2.50
	2032421565	55125	BAKER & TAYLOR BOOKS	10100610-434200	GENERAL MATERIALS	0.25
	2032421566	55127	BAKER & TAYLOR BOOKS	10100610-434200	GENERAL MATERIALS	1.05
	2032421567	55129	BAKER & TAYLOR BOOKS	10100610-434200	GENERAL MATERIALS	0.40
	2032424938	55130	BAKER & TAYLOR BOOKS	10100610-434200	GENERAL MATERIALS	1.05
	2032424939	55132	BAKER & TAYLOR BOOKS	10100610-434200	GENERAL MATERIALS	38.45
	2032424940	55133	BAKER & TAYLOR BOOKS	10100610-434200	GENERAL MATERIALS	29.85
	2032421559	55113	BAKER & TAYLOR BOOKS	10100610-434200	GENERAL MATERIALS	4.35
	2032421560	55114	BAKER & TAYLOR BOOKS	10100610-434200	GENERAL MATERIALS	0.80

356	2032421561	55121	BAKER & TAYLOR BOOKS	10100610-434200	GENERAL MATERIALS	3.40
	2032421562	55122	BAKER & TAYLOR BOOKS	10100610-434200	GENERAL MATERIALS	7.05
	2032421563	55123	BAKER & TAYLOR BOOKS	10100610-434200	GENERAL MATERIALS	0.40
	2032421564	55124	BAKER & TAYLOR BOOKS	10100610-434200	GENERAL MATERIALS	1.05
					BAKER & TAYLOR BOOKS Total:	10,902.69
7009	156	54465	BLACK HILLS LIBRARY CONSORTIUM - SD	10100610-425900	SUPPORT SERVICES	405.76
					BLACK HILLS LIBRARY CONSORTIUM - SD Total:	405.76
8021	10/26/16- 10/28/16	53879	CALDERON, TAYLOR	10100609-429400	REIMBURSEMENT	107.97
					CALDERON, TAYLOR Total:	107.97
940	1429696	55353	CENTER POINT LARGE PRINT	10100610-434100	GENERAL MATERIALS	26.57
	1428193	55367	CENTER POINT LARGE PRINT	10100610-434100	GENERAL MATERIALS	127.25
					CENTER POINT LARGE PRINT Total:	153.82
1044	41767	54466	CLIMATE CONTROL SYSTEMS & SERVICE	10100609-425200	STRUCTURE	18.83
	41767	54466	CLIMATE CONTROL SYSTEMS & SERVICE	10100610-422500	STRUCTURE	202.50
					CLIMATE CONTROL SYSTEMS & SERVICE Total:	221.33
1234	IN309235	53936	DAKOTA BUSINESS CENTER	10100609-425300	MACHINES/EQUIPMENT	462.40
	IN309236	53977	DAKOTA BUSINESS CENTER	10100609-425300	MACHINES/EQUIPMENT	106.98
	IN308867	53984	DAKOTA BUSINESS CENTER	10100609-425300	MACHINES/EQUIPMENT	38.00
	IN309234	53994	DAKOTA BUSINESS CENTER	10100609-425300	MACHINES/EQUIPMENT	492.12
	IN309727	54496	DAKOTA BUSINESS CENTER	10100609-425300	MACHINES/EQUIPMENT	39.01
	IN310263	55308	DAKOTA BUSINESS CENTER	10100609-425300	MACHINES/EQUIPMENT	38.00
	IN309235	53936	DAKOTA BUSINESS CENTER	10100609-426100	MACHINES/EQUIPMENT	31.32
	IN309236	53977	DAKOTA BUSINESS CENTER	10100609-426100	MACHINES/EQUIPMENT	67.35
	IN309727	54496	DAKOTA BUSINESS CENTER	10100610-424400	MACHINES/EQUIPMENT	176.64
	IN309235	53936	DAKOTA BUSINESS CENTER	99600971-424400	MACHINES/EQUIPMENT	651.21
	IN309236	53977	DAKOTA BUSINESS CENTER	99600971-424400	MACHINES/EQUIPMENT	141.97

1234	IN309234	53994	DAKOTA BUSINESS CENTER	99600971-424400	MACHINES/EQUIPMENT	317.58
					DAKOTA BUSINESS CENTER Total:	2,562.58
1248	100410860	53895	DAKOTA PARTY	10100609-429400	PROGRAMMING-TEEN	28.89
	100412095	55083	DAKOTA PARTY	10100610-429400	PROGRAMMING	52.16
	100405151	55310	DAKOTA PARTY	10100610-429400	PROGRAMMING-ADULT	40.47
	100398984	55311	DAKOTA PARTY	10100610-429400	PROGRAMMING-ADULT	14.94
					DAKOTA PARTY Total:	136.46
1481	11/09/16	53889	EASYPERMIT POSTAGE	10100610-426100	MACHINES/EQUIPMENT	703.00
					EASYPERMIT POSTAGE Total:	703.00
1560	INV-US-28364	54759	ENVISIONWARE INC	10100610-429500	SUBSCRIPTIONS	1,324.75
					ENVISIONWARE INC Total:	1,324.75
1789	11/01/16	53983	FRIENDS OF THE LIBRARY	99600971-453000	REFUNDS	1,653.00
					FRIENDS OF THE LIBRARY Total:	1,653.00
1796	5300	52980	FRONTIER COMMERCIAL GLASS	10100609-422500	STRUCTURE	170.00
	5300	52980	FRONTIER COMMERCIAL GLASS	10100609-425200	STRUCTURE	208.38
					FRONTIER COMMERCIAL GLASS Total:	378.38
8661	11/14/16	55309	GRACE BALLOCH MEMORIAL LIBRARY	10100609-434600	GENERAL MATERIALS	16.79
					GRACE BALLOCH MEMORIAL LIBRARY Total:	16.79
1979	1-GS491141	53933	GREAT WESTERN TIRE INC.	10100609-426700	MAINTENANCE/FACILITIES	503.83
					GREAT WESTERN TIRE INC. Total:	503.83
8518	10/03/16	55352	GROMBACHER, KERRY	10100610-422500	PROGRAMMING-ADULT	250.00
					GROMBACHER, KERRY Total:	250.00
2168	303425-0	53161	HEARTLAND PAPER CO	10100609-426400	MAINTENANCE/FACILITIES	57.60
	315020-0	54655	HEARTLAND PAPER CO	10100609-426400	MAINTENANCE/FACILITIES	101.21
	307902-0	53186	HEARTLAND PAPER CO	10100610-426400	MAINTENANCE/FACILITIES	45.06
	307903-0	53187	HEARTLAND PAPER CO	10100610-426400	MAINTENANCE/FACILITIES	46.12

2168	303423-0	54323	HEARTLAND PAPER CO	10100610-426400	MAINTENANCE/FACILITIES	153.65
	316859-0	55368	HEARTLAND PAPER CO	10100610-426400	MAINTENANCE/FACILITIES	110.53
					HEARTLAND PAPER CO Total:	514.17
2453	1901002007780	55170	INTERSTATE BATTERIES INC	10100610-426100	MAINTENANCE/FACILITIES	19.00
					INTERSTATE BATTERIES INC Total:	19.00
2498	7155	55077	JANTECH LLC	10100610-422500	MAINTENANCE/FACILITIES	220.00
					JANTECH LLC Total:	220.00
2722	P 12117	54028	KNIGHT SECURITY SYSTEMS INC	10100609-426100	STRUCTURE	69.13
					KNIGHT SECURITY SYSTEMS INC Total:	69.13
6181	519126	53415	LIVING DESIGN	10100609-422500	DECOR	125.00
					LIVING DESIGN Total:	125.00
3208	2958	53937	MENARDS	10100609-425200	MAINTENANCE/FACILITIES	49.87
	2958	53937	MENARDS	10100609-426100	MAINTENANCE/FACILITIES	51.84
	2958	53937	MENARDS	10100609-426300	MAINTENANCE/FACILITIES	2.98
	2958	53937	MENARDS	10100609-426400	MAINTENANCE/FACILITIES	11.08
	3852	55081	MENARDS	10100609-426500	MAINTENANCE/FACILITIES	21.84
					MENARDS Total:	137.61
3242	1268111018307	53159	MIDCONTINENT COMMUNICATIONS	10100610-428100	MACHINES/EQUIPMENT	1,000.00
	7009002028307	53160	MIDCONTINENT COMMUNICATIONS	10100610-428100	MACHINES/EQUIPMENT	215.00
	7009002028372	54656	MIDCONTINENT COMMUNICATIONS	10100610-428100	MACHINES/EQUIPMENT	215.00
	1268111018372	54677	MIDCONTINENT COMMUNICATIONS	10100610-428100	MACHINES/EQUIPMENT	677.00
					MIDCONTINENT COMMUNICATIONS Total:	2,107.00
3258	94371142	53229	MIDWEST TAPE EXCHANGE	10100609-434100	GENERAL MATERIALS	39.99
	94510633	54801	MIDWEST TAPE EXCHANGE	10100609-434100	GENERAL MATERIALS	134.96
	94510632	54802	MIDWEST TAPE EXCHANGE	10100609-434100	GENERAL MATERIALS	31.99
	94533311	55320	MIDWEST TAPE EXCHANGE	10100609-434100	GENERAL MATERIALS	184.95

3258	94477872	54776	MIDWEST TAPE EXCHANGE	10100609-434100	GENERAL MATERIALS	39.99
	94456683	54782	MIDWEST TAPE EXCHANGE	10100609-434100	GENERAL MATERIALS	44.99
	94521462	55316	MIDWEST TAPE EXCHANGE	10100609-434200	GENERAL MATERIALS	2.50
	94513849	55318	MIDWEST TAPE EXCHANGE	10100609-434200	GENERAL MATERIALS	10.00
	94521810	55319	MIDWEST TAPE EXCHANGE	10100609-434200	GENERAL MATERIALS	7.50
	94525522	55321	MIDWEST TAPE EXCHANGE	10100609-434200	GENERAL MATERIALS	7.50
	94521814	55370	MIDWEST TAPE EXCHANGE	10100609-434200	GENERAL MATERIALS	5.00
	94521464	55371	MIDWEST TAPE EXCHANGE	10100609-434200	GENERAL MATERIALS	15.00
	94525524	55312	MIDWEST TAPE EXCHANGE	10100609-434200	GENERAL MATERIALS	5.00
	94521813	55313	MIDWEST TAPE EXCHANGE	10100609-434200	GENERAL MATERIALS	5.00
	94521812	55314	MIDWEST TAPE EXCHANGE	10100609-434200	GENERAL MATERIALS	7.50
	94521463	55315	MIDWEST TAPE EXCHANGE	10100609-434200	GENERAL MATERIALS	2.50
	94508393	54796	MIDWEST TAPE EXCHANGE	10100609-434200	GENERAL MATERIALS	2.50
	94502199	54797	MIDWEST TAPE EXCHANGE	10100609-434200	GENERAL MATERIALS	5.00
	94502196	54798	MIDWEST TAPE EXCHANGE	10100609-434200	GENERAL MATERIALS	7.50
	94499399	54799	MIDWEST TAPE EXCHANGE	10100609-434200	GENERAL MATERIALS	15.00
	94474661	54800	MIDWEST TAPE EXCHANGE	10100609-434200	GENERAL MATERIALS	63.60
	94287866	54785	MIDWEST TAPE EXCHANGE	10100609-434200	GENERAL MATERIALS	127.20
	94508397	54791	MIDWEST TAPE EXCHANGE	10100609-434200	GENERAL MATERIALS	2.50
	94508396	54792	MIDWEST TAPE EXCHANGE	10100609-434200	GENERAL MATERIALS	25.00
	94508395	54793	MIDWEST TAPE EXCHANGE	10100609-434200	GENERAL MATERIALS	10.00
	94508394	54794	MIDWEST TAPE EXCHANGE	10100609-434200	GENERAL MATERIALS	2.50
	94506800	54795	MIDWEST TAPE EXCHANGE	10100609-434200	GENERAL MATERIALS	7.50
	94477202	54778	MIDWEST TAPE EXCHANGE	10100609-434200	GENERAL MATERIALS	10.00
	94477201	54779	MIDWEST TAPE EXCHANGE	10100609-434200	GENERAL MATERIALS	10.00
	94468324	54780	MIDWEST TAPE EXCHANGE	10100609-434200	GENERAL MATERIALS	7.50
	94468322	54781	MIDWEST TAPE EXCHANGE	10100609-434200	GENERAL MATERIALS	17.50
	94508391	54783	MIDWEST TAPE EXCHANGE	10100609-434200	GENERAL MATERIALS	10.00
	94486037	54784	MIDWEST TAPE EXCHANGE	10100609-434200	GENERAL MATERIALS	2.50
	94477203	54777	MIDWEST TAPE EXCHANGE	10100609-434200	GENERAL MATERIALS	5.00

3258	94377280	53287	MIDWEST TAPE EXCHANGE	10100609-434500	GENERAL MATERIALS	1,568.29
	94469451	54001	MIDWEST TAPE EXCHANGE	10100609-434500	GENERAL MATERIALS	1,704.54
	94477203	54777	MIDWEST TAPE EXCHANGE	10100609-434600	GENERAL MATERIALS	16.48
	94477202	54778	MIDWEST TAPE EXCHANGE	10100609-434600	GENERAL MATERIALS	89.96
	94477201	54779	MIDWEST TAPE EXCHANGE	10100609-434600	GENERAL MATERIALS	89.96
	94468324	54780	MIDWEST TAPE EXCHANGE	10100609-434600	GENERAL MATERIALS	38.97
	94468322	54781	MIDWEST TAPE EXCHANGE	10100609-434600	GENERAL MATERIALS	72.68
	94508391	54783	MIDWEST TAPE EXCHANGE	10100609-434600	GENERAL MATERIALS	89.96
	94521810	55319	MIDWEST TAPE EXCHANGE	10100609-434600	GENERAL MATERIALS	67.47
	94525522	55321	MIDWEST TAPE EXCHANGE	10100609-434600	GENERAL MATERIALS	47.22
	94521814	55370	MIDWEST TAPE EXCHANGE	10100609-434600	GENERAL MATERIALS	38.23
	94521464	55371	MIDWEST TAPE EXCHANGE	10100609-434600	GENERAL MATERIALS	134.94
	94521813	55313	MIDWEST TAPE EXCHANGE	10100609-434600	GENERAL MATERIALS	46.48
	94521812	55314	MIDWEST TAPE EXCHANGE	10100609-434600	GENERAL MATERIALS	67.47
	94521463	55315	MIDWEST TAPE EXCHANGE	10100609-434600	GENERAL MATERIALS	23.24
	94521462	55316	MIDWEST TAPE EXCHANGE	10100609-434600	GENERAL MATERIALS	22.49
	94513847	55317	MIDWEST TAPE EXCHANGE	10100609-434600	GENERAL MATERIALS	167.88
	94513849	55318	MIDWEST TAPE EXCHANGE	10100609-434600	GENERAL MATERIALS	59.98
	94508393	54796	MIDWEST TAPE EXCHANGE	10100609-434600	GENERAL MATERIALS	14.99
	94502199	54797	MIDWEST TAPE EXCHANGE	10100609-434600	GENERAL MATERIALS	34.48
	94502196	54798	MIDWEST TAPE EXCHANGE	10100609-434600	GENERAL MATERIALS	49.47
	94499399	54799	MIDWEST TAPE EXCHANGE	10100609-434600	GENERAL MATERIALS	114.69
	94525524	55312	MIDWEST TAPE EXCHANGE	10100609-434600	GENERAL MATERIALS	34.48
	94486037	54784	MIDWEST TAPE EXCHANGE	10100609-434600	GENERAL MATERIALS	18.74
	94508397	54791	MIDWEST TAPE EXCHANGE	10100609-434600	GENERAL MATERIALS	14.99
	94508396	54792	MIDWEST TAPE EXCHANGE	10100609-434600	GENERAL MATERIALS	194.90
	94508395	54793	MIDWEST TAPE EXCHANGE	10100609-434600	GENERAL MATERIALS	89.96
	94508394	54794	MIDWEST TAPE EXCHANGE	10100609-434600	GENERAL MATERIALS	22.49
	94506800	54795	MIDWEST TAPE EXCHANGE	10100609-434600	GENERAL MATERIALS	67.47
	94477874	55372	MIDWEST TAPE EXCHANGE	10100610-434100	GENERAL MATERIALS	94.98

3258	94533309	55322	MIDWEST TAPE EXCHANGE	10100610-434100	GENERAL MATERIALS	44.99
	94533310	55369	MIDWEST TAPE EXCHANGE	10100610-434100	GENERAL MATERIALS	39.99
	94513847	55317	MIDWEST TAPE EXCHANGE	10100610-434200	GENERAL MATERIALS	30.00
					MIDWEST TAPE EXCHANGE Total:	6,088.03
6589	20160142	50214	MK SOLUTIONS INC	10100609-434200	GENERAL MATERIALS	2,190.00
	20160130	50214	MK SOLUTIONS INC	10100609-434200	GENERAL MATERIALS	760.00
					MK SOLUTIONS INC Total:	2,950.00
3556	0000494200	54679	OCLC NET LIBRARY	10100610-425900	SUPPORT SERVICES	3,190.39
					OCLC NET LIBRARY Total:	3,190.39
3617	136814134852 3010416	28564	OVERDRIVE INC	10100609-434500	GENERAL MATERIALS	(12.19)
	136814134852 3010416	28564	OVERDRIVE INC	10100609-434500	GENERAL MATERIALS	0.00
	136812305218 7080816	52765	OVERDRIVE INC	10100609-434500	GENERAL MATERIALS	38.96
	136812573217 0050216	52766	OVERDRIVE INC	10100609-434500	GENERAL MATERIALS	342.96
	136813285111 7100416	52953	OVERDRIVE INC	10100609-434500	GENERAL MATERIALS	48.00
	136813113067 3101116	52975	OVERDRIVE INC	10100609-434500	GENERAL MATERIALS	253.99
	136815084383 7102816	54682	OVERDRIVE INC	10100609-434500	GENERAL MATERIALS	155.97
	136815081780 7102816	54683	OVERDRIVE INC	10100609-434500	GENERAL MATERIALS	361.98
	136811395189 0103116	54684	OVERDRIVE INC	10100609-434500	GENERAL MATERIALS	147.89
	136800050089 7110116	54685	OVERDRIVE INC	10100609-434500	GENERAL MATERIALS	87.00
	136820223327 0111416	55323	OVERDRIVE INC	10100609-434500	GENERAL MATERIALS	1,172.05
	136813011104 0100416	52983	OVERDRIVE INC	10100609-434500	GENERAL MATERIALS	940.68
	136800010771 0100616	53289	OVERDRIVE INC	10100609-434500	GENERAL MATERIALS	15.99

3617	136816213771 0100116	53290	OVERDRIVE INC	10100609-434500	GENERAL MATERIALS	192.18
	136820090919 7110216	54680	OVERDRIVE INC	10100609-434500	GENERAL MATERIALS	245.81
	136814134852 3010416	28564	OVERDRIVE INC	10100610-434500	GENERAL MATERIALS	70.46
	136814134852 3010416	28564	OVERDRIVE INC	10100610-434500	GENERAL MATERIALS	12.19
	136813114124 3102016	52634	OVERDRIVE INC	10100610-434500	GENERAL MATERIALS	125.97
	136811141688 0111516	55324	OVERDRIVE INC	10100610-434500	GENERAL MATERIALS	45.97
	136820084407 0110216	55325	OVERDRIVE INC	10100610-434500	GENERAL MATERIALS	312.38
	136809042706 0111516	55326	OVERDRIVE INC	10100610-434500	GENERAL MATERIALS	461.43
	136800025263 7110816	55327	OVERDRIVE INC	10100610-434500	GENERAL MATERIALS	60.00
	136800015801 0110716	55328	OVERDRIVE INC	10100610-434500	GENERAL MATERIALS	160.00
	136800013732 3110316	55330	OVERDRIVE INC	10100610-434500	GENERAL MATERIALS	19.99
				OVERDRIVE INC Total:	5,259.66	
3845	71407	54678	RAPID CITY AREA CHAMBER OF COMMERCE	10100609-429200	DUES	133.40
					RAPID CITY AREA CHAMBER OF COMMERCE Total:	133.40
3872	11/01/16	53931	RAPID CITY PUBLIC LIBRARY	10100609-426100	REFUNDS	0.57
	09/01/16	48835	RAPID CITY PUBLIC LIBRARY	10100609-426300	REFUNDS	10.71
	11/01/16	53931	RAPID CITY PUBLIC LIBRARY	10100609-429400	REFUNDS	3.76
					RAPID CITY PUBLIC LIBRARY Total:	15.04
4330	2504311	53935	SERVALL UNIFORM/LINEN CO INC	10100609-426400	MAINTENANCE/FACILITIES	71.99
	2510320	55076	SERVALL UNIFORM/LINEN CO INC	10100609-426400	MAINTENANCE/FACILITIES	95.78
					SERVALL UNIFORM/LINEN CO INC Total:	167.77

7428	644472	55082	SPARTAN STORES LLC	10100609-426300	SUPPLIES	55.58
	654670	53917	SPARTAN STORES LLC	10100609-429400	PROGRAMMING-ADULT	3.58
	800054	53921	SPARTAN STORES LLC	10100609-429400	PROGRAMMING-ADULT	3.81
	654671		SPARTAN STORES LLC	10100609-429400	CR TAX EXEMPT	(3.81)
					SPARTAN STORES LLC Total:	59.16
4830	TBOW1853	55080	THREE SONS LANDSCAPING	10100610-422500	MAINTENANCE/FACILITIES	120.00
					THREE SONS LANDSCAPING Total:	120.00
4836	3002802730	52782	THYSSENKRUPP ELEVATOR CORP	10100609-425300	MACHINES/EQUIPMENT	680.13
					THYSSENKRUPP ELEVATOR CORP Total:	680.13
6989	0023442	46983	TRAF-SYS INC	10100610-422500	STRUCTURE	600.00
	0023442	46983	TRAF-SYS INC	10100610-429500	STRUCTURE	350.00
	0023442	46983	TRAF-SYS INC	10100610-429600	STRUCTURE	1,320.00
					TRAF-SYS INC Total:	2,270.00
6415	006674901 10/06/16	53228	VAST BUSINESS	10100610-428100	MACHINES/EQUIPMENT	529.76
	006674901 11/06/16	54686	VAST BUSINESS	10100610-428100	MACHINES/EQUIPMENT	527.50
					VAST BUSINESS Total:	1,057.26
5118	000098	53015	WALMART COMMUNITY	10100609-426100	PROGRAMMING-TEEN	2.91
	000098	53015	WALMART COMMUNITY	10100609-429400	PROGRAMMING-TEEN	13.94
	004056	52606	WALMART COMMUNITY	10100610-429400	PROGRAMMING-TEEN	44.18
					WALMART COMMUNITY Total:	61.03
5220	C 511947-0		WESTERN STATIONERS	10100609-425300	CR ISSUED 1/2 CREDIT QCM RPLACEMENT BLADE	(65.00)
	684523-1	53863	WESTERN STATIONERS	10100609-426100	SUPPLIES	73.25
	684925-0	53893	WESTERN STATIONERS	10100609-426100	SUPPLIES	23.97
	684925-1	53893	WESTERN STATIONERS	10100609-426100	SUPPLIES	64.50
	685382-0	55078	WESTERN STATIONERS	10100609-426100	SUPPLIES	3.53
	684523-0	54688	WESTERN STATIONERS	10100609-426100	SUPPLIES	73.25
	685804-0	55075	WESTERN STATIONERS	10100609-426100	SUPPLIES	173.21

5220	685804-1	55075	WESTERN STATIONERS	10100609-426100	SUPPLIES	16.75
					WESTERN STATIONERS Total:	363.46
Total					Grand Total:	50,834.67