



DOWNTOWN • 610 Quincy St. Rapid City, SD 57701 • (605) 394-6139 or (605) 394-4171
NORTH • 10 Van Buren St. Rapid City, SD 57701 • (605) 716-4098

Date: November 14, 2016
To: Rapid City Public Library Board of Trustees
From: Jennifer Read, Administrative and Facilities Coordinator
Re: Monthly Financial Executive Summary
Period Ending October 31, 2016

Rapid City Public Library's year to date fines and fees revenues, as reflected in [Figure 1](#), totaled \$50,249.29. This is a decrease of 21% compared to the previous year (2015).

1. Revenue from non-resident cards – A decrease in revenue of 6% compared to last year. We currently have 554 non-county users registered.
2. Revenue from copies – There is an increase of 1% for copies this year compared to last year.
3. Revenue from fines – Decreased 34% from this point last year for a difference of \$13,364.69. The decreased amount is due to changes in the DVD policy as well as the total loan limit. We also do not collect fines on digital materials.
4. Revenue from meeting room fees – Increased \$75.00 from this time last year.
5. Revenue from 3D prints and proctoring – Revenue for these two items are \$1,359.57 and \$65 respectively.

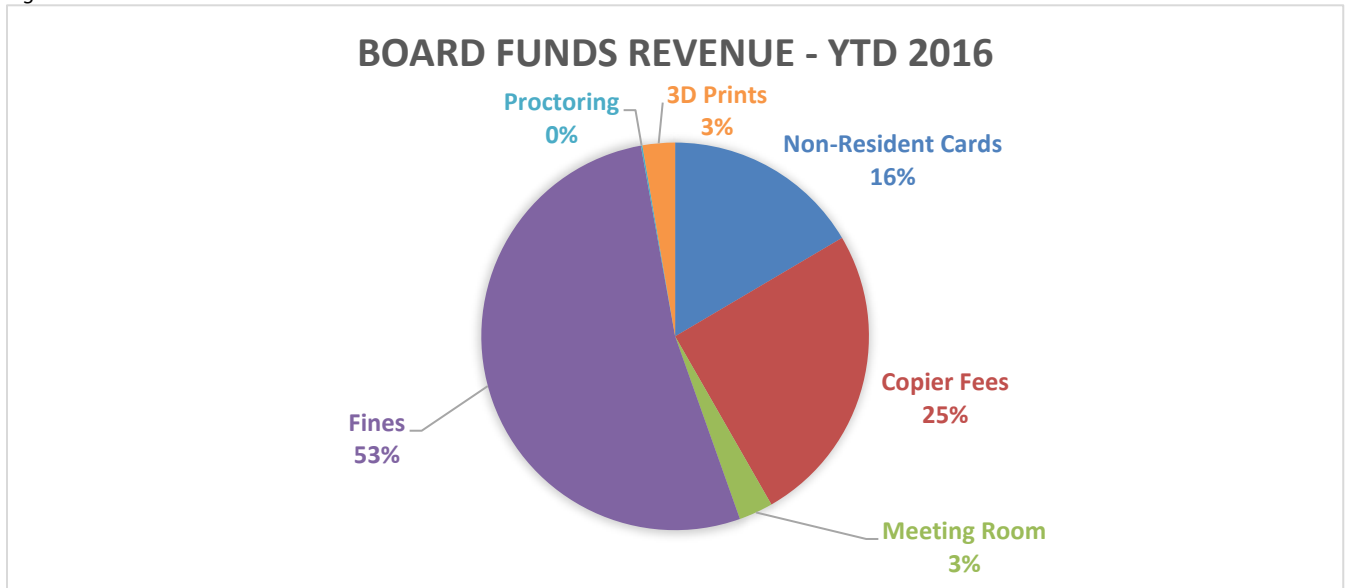
Total expenditures and encumbrances¹ through October were \$2,747,801.00 as reflected in [Figure 2](#). With a budget established at \$3.7 million, approximately 75% was expended as of the end of October.

1. Salary & Wages - Actual expenditures at the end of October 2016 for Salaries and Wages totaled \$1,292,257. This is \$66,589 higher than last year at this time.
2. Benefits – Actual expenditures at the end of October 2016 for Benefits totaled \$372,165.
3. Insurance – Expenses in these line items decreased by \$2,371 under the previous year. Actual expenditures in this line item are \$22,684.
4. Professional service expenditures – Actual expenditures at the end of October 2016 totaled \$126,362. Expenditures in this line item include facility maintenance services (i.e. window cleaning, HVAC maintenance and pest control), and security services. Security services were added towards the end of last year at the North Library.
5. Rentals – Rental expenses through October 2016 totaled \$17,984. Rentals include our costs for leased parking as well as equipment rentals and leased equipment.
6. Repair & Maintenance – Total expenditures for repair and maintenance through October 2016 were \$112,654. This line item is for repair costs of both the downtown facility (structure) and equipment, as well as the Integrated Library System. The new ILS, KOHA, is less costly than our previous Millennium service.

¹ Encumbrances: Obligations in the form of purchase orders, contracts or salary commitments which are chargeable to an appropriation and for which a part of the appropriation is reserved. Obligations cease to be encumbrances when paid or when the actual liability is set up.

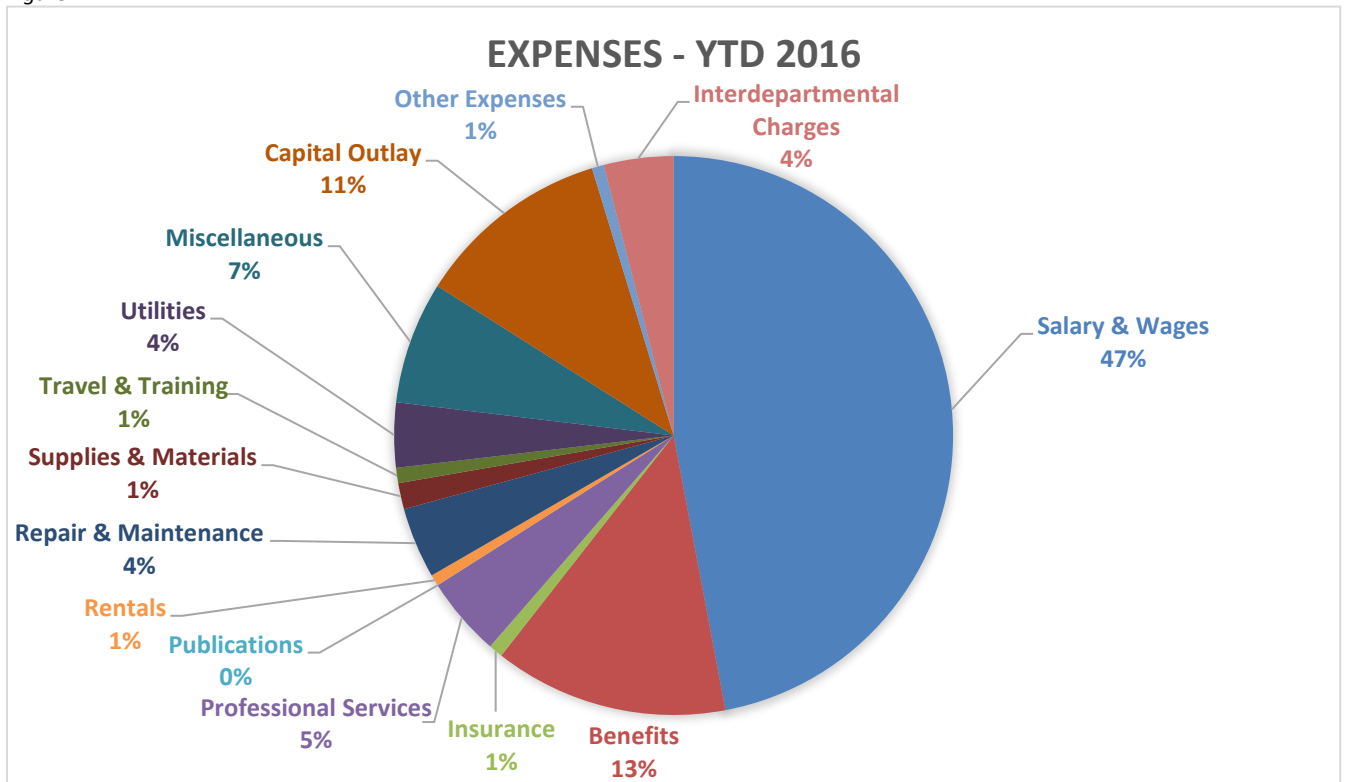
7. Supplies & Materials – Total expenditures for supplies and materials through October 2016 were \$41,537. Purchases include office supplies, gasoline, facilities uniforms, janitorial supplies, tools, tires, and facility equipment. These purchases are made according to the replacement schedule.
8. Travel & Training – Total expenditures in this line item are \$24,310. Conferences and trainings are scheduled according to the travel and training plan.
9. Utilities – Utilities through October 2016 totaled \$103,037. Utilities include telephone, internet, natural gas and electricity.
10. Miscellaneous – Miscellaenous expenditures through October 2016 totaled \$194,526. Expenditures out of this line item include subscriptions to periodicals for patron browsing, programming materials, computers and software and office equipment and these are made according to the technology and equipment replacement schedule. This is an authorized line item name, and planned expenditures that don't fit in any other line item go here.
11. Capital Outlay – Expenditures in this category totaled \$310,508. This line item includes planned purchases for books and other library materials, as well as building improvements and vehicles.
12. Other expenses – Increased 53%, or \$6,553 over last year. This is a pass-thru line item for the Friends of the Library Book Sale area and does not affect the bottom line. The Friends of the Library Book Shop will now be open all hours the Library is open. Other pass-thru line items include the Literacy Council and Friends of the Library memberships.

Figure 1



Total Revenue: \$50,249.29

Figure 2



Total Expenditures: \$2,747,801.00

Table 1

Monthly Vacancy Status Report as of 10/31/16

LIBRARY DEPARTMENT	FULL AND PART-TIME POSITIONS	FULL AND PART-TIME EMPLOYEES	VACANCIES
Management	2	2	-
Librarian Is	3	3	-
Managers	1	1	-
Coordinators	3	3	-
Business Office	2	2	-
Facilities	3	3	-
Library Associates	17	17	-
Customer Service Specialists	5	5	-
Outreach	6	6	-
TOTALS	42	42	-

NOTE: Data excludes temporary classifications.

Year to Date Expense Report					
as of 10/31/16					
				Dept. 0609, 0610, 0971	
		Current Year Working Budget	Total Year To Date Encumbrance and Expense	Remaining Budget Balance	Percent Budget Remaining
	4110 Salary & Wages	\$ 1,494,165	\$ 1,260,107	234,058	16%
	4111 Overtime Wages	-	2,106	(2,106)	0%
	4114 FTO/Uniform/Tool/Class IV Pay	-	2,558	(2,558)	0%
	4118 Temporary Wages	31,481	27,486	3,995	13%
4100	Salary & Wages	1,525,646	1,292,257	233,389	15%
	4120 Social Security	94,243	75,628	18,615	20%
	4121 Medicare	22,041	17,687	4,354	20%
	4130 Retirement	89,314	85,671	3,643	4%
	4131 Section 125 Administration	1,209	351	858	71%
	4140 Workmens Comp	3,822	3,054	768	20%
	4150 Group Health Insurance	203,169	188,389	14,780	7%
	4155 Group Life Insurance	1,850	1,385	465	25%
	4170 Unemployment Insurance	1,647	-	1,647	100%
4110	Benefits	417,295	372,165	45,130	11%
	4211 General & Auto Liability	6,172	4,552	1,620	26%
	4212 Boiler Coverage	1,506	-	1,506	100%
	4214 Other Insurance	22,660	18,132	4,528	20%
4210	Insurance	30,338	22,684	7,654	25%
	4223 Consultant Services	11,260	16,960	(5,700)	-51%
	4225 Other Professional Services	114,634	109,402	5,232	5%
	4229 Marketing	1,135	-	1,135	100%
4220	Professional Services	127,029	126,362	667	1%
	4230 Publishing	1,026	152	874	85%
4230	Publications	1,026	152	874	85%
	4243 Machinery Rentals	4,189	-	4,189	100%
	4244 Lease/Purchases	14,250	14,140	110	1%
	4246 Other Rentals	3,581	3,844	(263)	-7%
4240	Rentals	22,020	17,984	4,036	18%
	4251 Repair - Roll Stock	1,539	379	1,160	75%
	4252 Repair - Structures	43,797	17,744	26,053	59%
	4253 Repair - Equipment	28,852	18,892	9,960	35%
	4255 Repair - Water & Sewer	641	-	641	100%
	4259 Miscellaneous	92,224	75,639	16,585	18%
4250	Repair & Maintenance	167,053	112,654	54,399	33%
	4261 Office Supplies	41,962	28,334	13,628	32%
	4262 Gasoline, Oil, Fuel	2,584	1,456	1,128	44%
	4263 Clothing, Food	1,500	575	925	62%
	4264 Janitor & Chemical Supplies	25,892	10,691	15,201	59%
	4265 Minor Tools	4,200	461	3,739	89%
	4266 Agricultural Supply	-	-	-	0%
	4267 Tires	800	-	800	100%
	4269 Misc Supplies & Materials	-	20	(20)	0%
4260	Supplies & Materials	76,938	41,537	35,401	46%
	4270 Travel & Training	22,310	24,310	(2,000)	-9%
4270	Travel & Training	22,310	24,310	(2,000)	-9%
	4281 Telephone - Local	45,950	20,190	25,760	56%
	4282 Natural Gas	18,053	10,444	7,609	42%
	4283 Electricity	106,206	71,985	34,221	32%
	4287 Drainage Fees	-	418	(418)	0%
4280	Utilities	170,209	103,037	67,172	39%
	4292 Dues	2,501	1,884	617	25%
	4293 Subscriptions	92,338	85,689	6,649	7%
	4294 Other Miscellaneous Expenses	25,686	24,831	855	3%
	4295 Computers & Software	176,860	65,068	111,792	63%
	4296 Office Equipment	33,428	17,054	16,374	49%
4290	Miscellaneous	330,813	194,526	136,287	41%
	4320 Buildings & Structures	94,735	-	94,735	100%
	4341 General Materials	164,088	121,598	42,490	26%
	4342 Books/AV Processing	18,860	16,849	2,011	11%
	4345 Electronic Resources	136,504	110,336	26,168	19%
	4346 DVDs	34,504	28,898	5,606	16%
	4348 Interactive Materials	-	3,938	(3,938)	0%
	4350 Furniture & Minor Equipment	45,700	-	45,700	100%
	4360 Library Machinery	125,000	28,889	96,111	77%
	4390 Library Other Capital	-	-	-	0%
4300	Capital Outlay	619,391	310,508	308,883	50%
	4530 Refund or Reimbursement	17,000	18,995	(1,995)	-12%
4500	Other Expenses	17,000	18,995	(1,995)	-12%
	*SUB-TOTAL	3,527,068	2,637,171	889,897	25%
	4226 Interdepartmental Charges	136,729	110,630	26,099	19%
4226	Interdepartmental Charges	136,729	110,630	26,099	19%
	*SUB-TOTAL	3,663,797	2,747,801	915,996	25%
	**Total LIBRARY	\$ 3,663,797	\$ 2,747,801	\$ 915,996	25%

The City of Rapid City
Bill List by Vendor - Detail

Vendor #	Invoice #	PO #	Vendor Name	GL Account	Line Item Description	Line Item Amount
79	206701	52612	ACE HARDWARE-EAST	10100610-426400	MAINTENANCE/FACILITIES	17.99
					ACE HARDWARE-EAST Total:	17.99
170	172584808382	51697	AMAZON.COM CREDIT	10100609-434100	GENERAL MATERIALS	21.00
	016928510503	51698	AMAZON.COM CREDIT	10100609-434100	GENERAL MATERIALS	16.99
	016920118139	51699	AMAZON.COM CREDIT	10100609-434100	GENERAL MATERIALS	114.58
	170562769552	51700	AMAZON.COM CREDIT	10100609-434100	GENERAL MATERIALS	20.35
	029868892067		AMAZON.COM CREDIT	10100609-434100	CR RFD	(0.05)
	143469193430	52897	AMAZON.COM CREDIT	10100609-434100	GENERAL MATERIALS	98.94
	054193423967	52898	AMAZON.COM CREDIT	10100609-434100	GENERAL MATERIALS	10.97
	064100684198	51701	AMAZON.COM CREDIT	10100609-434100	GENERAL MATERIALS	15.95
	029862881361	51702	AMAZON.COM CREDIT	10100609-434100	GENERAL MATERIALS	40.29
	172582489054	51703	AMAZON.COM CREDIT	10100609-434100	GENERAL MATERIALS	13.57
	165254880139	51704	AMAZON.COM CREDIT	10100609-434100	GENERAL MATERIALS	20.35
	057444888252	46992	AMAZON.COM CREDIT	10100609-434800	GENERAL MATERIALS	97.05
	016921571655	52977	AMAZON.COM CREDIT	10100610-434100	GENERAL MATERIALS	9.14
	013372081318	52978	AMAZON.COM CREDIT	10100610-434100	GENERAL MATERIALS	198.21
	283438958220	52979	AMAZON.COM CREDIT	10100610-434100	GENERAL MATERIALS	12.79
					AMAZON.COM CREDIT Total:	690.13
356	NS16060137	52070	BAKER & TAYLOR BOOKS	10100609-429300	GENERAL MATERIALS	2,094.00
	2032354900	53025	BAKER & TAYLOR BOOKS	10100609-434100	GENERAL MATERIALS	45.79
	2032354901	53026	BAKER & TAYLOR BOOKS	10100609-434100	GENERAL MATERIALS	43.17
	2032357780	53029	BAKER & TAYLOR BOOKS	10100609-434100	GENERAL MATERIALS	12.99
	2032354893	53009	BAKER & TAYLOR BOOKS	10100609-434100	GENERAL MATERIALS	16.79
	2032354896	53019	BAKER & TAYLOR BOOKS	10100609-434100	GENERAL MATERIALS	47.85
	2032354897	53022	BAKER & TAYLOR BOOKS	10100609-434100	GENERAL MATERIALS	13.97

356	2032354898	53023	BAKER & TAYLOR BOOKS	10100609-434100	GENERAL MATERIALS	12.63
	2032354899	53024	BAKER & TAYLOR BOOKS	10100609-434100	GENERAL MATERIALS	10.07
	2032345904	53003	BAKER & TAYLOR BOOKS	10100609-434100	GENERAL MATERIALS	100.01
	2032345905	53004	BAKER & TAYLOR BOOKS	10100609-434100	GENERAL MATERIALS	8.54
	2032354889	53005	BAKER & TAYLOR BOOKS	10100609-434100	GENERAL MATERIALS	223.74
	2032354890	53006	BAKER & TAYLOR BOOKS	10100609-434100	GENERAL MATERIALS	238.26
	2032354891	53007	BAKER & TAYLOR BOOKS	10100609-434100	GENERAL MATERIALS	14.55
	2032354892	53008	BAKER & TAYLOR BOOKS	10100609-434100	GENERAL MATERIALS	416.00
	2032345640	52997	BAKER & TAYLOR BOOKS	10100609-434100	GENERAL MATERIALS	21.27
	2032345899	52998	BAKER & TAYLOR BOOKS	10100609-434100	GENERAL MATERIALS	37.52
	2032345900	52999	BAKER & TAYLOR BOOKS	10100609-434100	GENERAL MATERIALS	29.68
	2032345901	53000	BAKER & TAYLOR BOOKS	10100609-434100	GENERAL MATERIALS	15.67
	2032345902	53001	BAKER & TAYLOR BOOKS	10100609-434100	GENERAL MATERIALS	31.36
	2032345903	53002	BAKER & TAYLOR BOOKS	10100609-434100	GENERAL MATERIALS	15.68
	2032354894	52989	BAKER & TAYLOR BOOKS	10100609-434100	GENERAL MATERIALS	22.50
	2032354895	52991	BAKER & TAYLOR BOOKS	10100609-434100	GENERAL MATERIALS	29.09
	2032345638	52808	BAKER & TAYLOR BOOKS	10100609-434100	GENERAL MATERIALS	19.60
	2032345639	52809	BAKER & TAYLOR BOOKS	10100609-434100	GENERAL MATERIALS	15.09
	2032345631	52802	BAKER & TAYLOR BOOKS	10100609-434100	GENERAL MATERIALS	6.31
	2032345633	52803	BAKER & TAYLOR BOOKS	10100609-434100	GENERAL MATERIALS	8.54
	2032345634	52804	BAKER & TAYLOR BOOKS	10100609-434100	GENERAL MATERIALS	13.25
	2032345635	52805	BAKER & TAYLOR BOOKS	10100609-434100	GENERAL MATERIALS	8.99
	2032345636	52806	BAKER & TAYLOR BOOKS	10100609-434100	GENERAL MATERIALS	13.99
	2032345637	52807	BAKER & TAYLOR BOOKS	10100609-434100	GENERAL MATERIALS	10.26
	2032345624	52546	BAKER & TAYLOR BOOKS	10100609-434100	GENERAL MATERIALS	5.99
	2032345625	52547	BAKER & TAYLOR BOOKS	10100609-434100	GENERAL MATERIALS	16.23
	2032345626	52548	BAKER & TAYLOR BOOKS	10100609-434100	GENERAL MATERIALS	149.36
	2032345627	52549	BAKER & TAYLOR BOOKS	10100609-434100	GENERAL MATERIALS	24.16
	2032345628	52550	BAKER & TAYLOR BOOKS	10100609-434100	GENERAL MATERIALS	415.64
	2032345630	52801	BAKER & TAYLOR BOOKS	10100609-434100	GENERAL MATERIALS	14.21

356	2032345618	52540	BAKER & TAYLOR BOOKS	10100609-434100	GENERAL MATERIALS	19.60
	2032345619	52541	BAKER & TAYLOR BOOKS	10100609-434100	GENERAL MATERIALS	31.91
	2032345620	52542	BAKER & TAYLOR BOOKS	10100609-434100	GENERAL MATERIALS	89.55
	2032345621	52543	BAKER & TAYLOR BOOKS	10100609-434100	GENERAL MATERIALS	144.27
	2032345622	52544	BAKER & TAYLOR BOOKS	10100609-434100	GENERAL MATERIALS	20.19
	2032345623	52545	BAKER & TAYLOR BOOKS	10100609-434100	GENERAL MATERIALS	171.87
	2032345612	52534	BAKER & TAYLOR BOOKS	10100609-434100	GENERAL MATERIALS	338.62
	2032345613	52535	BAKER & TAYLOR BOOKS	10100609-434100	GENERAL MATERIALS	11.83
	2032345614	52536	BAKER & TAYLOR BOOKS	10100609-434100	GENERAL MATERIALS	125.40
	2032345615	52537	BAKER & TAYLOR BOOKS	10100609-434100	GENERAL MATERIALS	28.60
	2032345616	52538	BAKER & TAYLOR BOOKS	10100609-434100	GENERAL MATERIALS	69.80
	2032345617	52539	BAKER & TAYLOR BOOKS	10100609-434100	GENERAL MATERIALS	5.97
	2032314044	52528	BAKER & TAYLOR BOOKS	10100609-434100	GENERAL MATERIALS	21.80
	2032314045	52529	BAKER & TAYLOR BOOKS	10100609-434100	GENERAL MATERIALS	53.80
	2032314046	52530	BAKER & TAYLOR BOOKS	10100609-434100	GENERAL MATERIALS	10.26
	2032314047	52531	BAKER & TAYLOR BOOKS	10100609-434100	GENERAL MATERIALS	16.99
	2032345610	52532	BAKER & TAYLOR BOOKS	10100609-434100	GENERAL MATERIALS	28.69
	2032345611	52533	BAKER & TAYLOR BOOKS	10100609-434100	GENERAL MATERIALS	16.23
	2032314037	52522	BAKER & TAYLOR BOOKS	10100609-434100	GENERAL MATERIALS	79.76
	2032314038	52523	BAKER & TAYLOR BOOKS	10100609-434100	GENERAL MATERIALS	16.80
	2032314039	52524	BAKER & TAYLOR BOOKS	10100609-434100	GENERAL MATERIALS	10.26
	2032314040	52525	BAKER & TAYLOR BOOKS	10100609-434100	GENERAL MATERIALS	11.20
	2032314042	52526	BAKER & TAYLOR BOOKS	10100609-434100	GENERAL MATERIALS	15.12
	2032314043	52527	BAKER & TAYLOR BOOKS	10100609-434100	GENERAL MATERIALS	15.11
	2032314031	52516	BAKER & TAYLOR BOOKS	10100609-434100	GENERAL MATERIALS	71.31
	2032314032	52517	BAKER & TAYLOR BOOKS	10100609-434100	GENERAL MATERIALS	31.92
	2032314033	52518	BAKER & TAYLOR BOOKS	10100609-434100	GENERAL MATERIALS	189.34
	2032314034	52519	BAKER & TAYLOR BOOKS	10100609-434100	GENERAL MATERIALS	15.12
	2032314035	52520	BAKER & TAYLOR BOOKS	10100609-434100	GENERAL MATERIALS	28.40
	2032314036	52521	BAKER & TAYLOR BOOKS	10100609-434100	GENERAL MATERIALS	64.64

356	2032314025	52510	BAKER & TAYLOR BOOKS	10100609-434100	GENERAL MATERIALS	107.06
	2032314026	52511	BAKER & TAYLOR BOOKS	10100609-434100	GENERAL MATERIALS	15.79
	2032314027	52512	BAKER & TAYLOR BOOKS	10100609-434100	GENERAL MATERIALS	10.20
	2032314028	52513	BAKER & TAYLOR BOOKS	10100609-434100	GENERAL MATERIALS	15.40
	2032314029	52514	BAKER & TAYLOR BOOKS	10100609-434100	GENERAL MATERIALS	19.60
	2032314030	52515	BAKER & TAYLOR BOOKS	10100609-434100	GENERAL MATERIALS	48.23
	2032324089	52236	BAKER & TAYLOR BOOKS	10100609-434100	GENERAL MATERIALS	172.56
	2032328184	52237	BAKER & TAYLOR BOOKS	10100609-434100	GENERAL MATERIALS	14.56
	2032300983	52507	BAKER & TAYLOR BOOKS	10100609-434100	GENERAL MATERIALS	278.78
	2032300981	52508	BAKER & TAYLOR BOOKS	10100609-434100	GENERAL MATERIALS	171.90
	2032293393	52509	BAKER & TAYLOR BOOKS	10100609-434100	GENERAL MATERIALS	727.02
	2032336198	52147	BAKER & TAYLOR BOOKS	10100609-434100	GENERAL MATERIALS	15.68
	2032336199	52148	BAKER & TAYLOR BOOKS	10100609-434100	GENERAL MATERIALS	29.11
	2032336200	52149	BAKER & TAYLOR BOOKS	10100609-434100	GENERAL MATERIALS	29.11
	2032336201	52150	BAKER & TAYLOR BOOKS	10100609-434100	GENERAL MATERIALS	23.44
	2032336202	52151	BAKER & TAYLOR BOOKS	10100609-434100	GENERAL MATERIALS	5.49
	2032336203	52152	BAKER & TAYLOR BOOKS	10100609-434100	GENERAL MATERIALS	9.51
	2032328189	52141	BAKER & TAYLOR BOOKS	10100609-434100	GENERAL MATERIALS	15.68
	2032328190	52142	BAKER & TAYLOR BOOKS	10100609-434100	GENERAL MATERIALS	10.26
	2032336194	52143	BAKER & TAYLOR BOOKS	10100609-434100	GENERAL MATERIALS	59.40
	2032336195	52144	BAKER & TAYLOR BOOKS	10100609-434100	GENERAL MATERIALS	16.77
	2032336196	52145	BAKER & TAYLOR BOOKS	10100609-434100	GENERAL MATERIALS	16.77
	2032336197	52146	BAKER & TAYLOR BOOKS	10100609-434100	GENERAL MATERIALS	76.10
	2032324087	52135	BAKER & TAYLOR BOOKS	10100609-434100	GENERAL MATERIALS	122.69
	2032324088	52136	BAKER & TAYLOR BOOKS	10100609-434100	GENERAL MATERIALS	15.65
	2032328185	52137	BAKER & TAYLOR BOOKS	10100609-434100	GENERAL MATERIALS	8.37
	2032328186	52138	BAKER & TAYLOR BOOKS	10100609-434100	GENERAL MATERIALS	10.26
	2032328187	52139	BAKER & TAYLOR BOOKS	10100609-434100	GENERAL MATERIALS	15.11
	2032328188	52140	BAKER & TAYLOR BOOKS	10100609-434100	GENERAL MATERIALS	32.48
	2032324081	52129	BAKER & TAYLOR BOOKS	10100609-434100	GENERAL MATERIALS	19.60

356	2032324082	52130	BAKER & TAYLOR BOOKS	10100609-434100	GENERAL MATERIALS	32.16
	2032324083	52131	BAKER & TAYLOR BOOKS	10100609-434100	GENERAL MATERIALS	15.09
	2032324084	52132	BAKER & TAYLOR BOOKS	10100609-434100	GENERAL MATERIALS	126.78
	2032324085	52133	BAKER & TAYLOR BOOKS	10100609-434100	GENERAL MATERIALS	14.55
	2032324086	52134	BAKER & TAYLOR BOOKS	10100609-434100	GENERAL MATERIALS	144.96
	2032328183	52069	BAKER & TAYLOR BOOKS	10100609-434100	GENERAL MATERIALS	27.63
	2032324076	52124	BAKER & TAYLOR BOOKS	10100609-434100	GENERAL MATERIALS	7.17
	2032324077	52125	BAKER & TAYLOR BOOKS	10100609-434100	GENERAL MATERIALS	125.79
	2032324078	52126	BAKER & TAYLOR BOOKS	10100609-434100	GENERAL MATERIALS	9.51
	2032327079	52127	BAKER & TAYLOR BOOKS	10100609-434100	GENERAL MATERIALS	84.39
	2032324080	52128	BAKER & TAYLOR BOOKS	10100609-434100	GENERAL MATERIALS	21.39
	2032328177	52063	BAKER & TAYLOR BOOKS	10100609-434100	GENERAL MATERIALS	14.55
	2032328178	52064	BAKER & TAYLOR BOOKS	10100609-434100	GENERAL MATERIALS	88.46
	2032328179	52065	BAKER & TAYLOR BOOKS	10100609-434100	GENERAL MATERIALS	98.59
	2032328180	52066	BAKER & TAYLOR BOOKS	10100609-434100	GENERAL MATERIALS	108.81
	2032328181	52067	BAKER & TAYLOR BOOKS	10100609-434100	GENERAL MATERIALS	4.79
	2032328182	52068	BAKER & TAYLOR BOOKS	10100609-434100	GENERAL MATERIALS	15.11
	2032324092	52057	BAKER & TAYLOR BOOKS	10100609-434100	GENERAL MATERIALS	14.21
	2032324093	52058	BAKER & TAYLOR BOOKS	10100609-434100	GENERAL MATERIALS	21.39
	2032328173	52059	BAKER & TAYLOR BOOKS	10100609-434100	GENERAL MATERIALS	13.42
	2032328174	52060	BAKER & TAYLOR BOOKS	10100609-434100	GENERAL MATERIALS	34.40
	2032328175	52061	BAKER & TAYLOR BOOKS	10100609-434100	GENERAL MATERIALS	29.66
	2032328176	52062	BAKER & TAYLOR BOOKS	10100609-434100	GENERAL MATERIALS	91.26
	2032324090	52055	BAKER & TAYLOR BOOKS	10100609-434100	GENERAL MATERIALS	20.89
	2032324091	52056	BAKER & TAYLOR BOOKS	10100609-434100	GENERAL MATERIALS	124.24
	2032354900	53025	BAKER & TAYLOR BOOKS	10100609-434200	GENERAL MATERIALS	2.35
	2032354901	53026	BAKER & TAYLOR BOOKS	10100609-434200	GENERAL MATERIALS	1.60
	2032357780	53029	BAKER & TAYLOR BOOKS	10100609-434200	GENERAL MATERIALS	0.40
	2032354892	53008	BAKER & TAYLOR BOOKS	10100609-434200	GENERAL MATERIALS	14.80
	2032354893	53009	BAKER & TAYLOR BOOKS	10100609-434200	GENERAL MATERIALS	1.05

356	2032354896	53019	BAKER & TAYLOR BOOKS	10100609-434200	GENERAL MATERIALS	2.50
	2032354897	53022	BAKER & TAYLOR BOOKS	10100609-434200	GENERAL MATERIALS	1.05
	2032354898	53023	BAKER & TAYLOR BOOKS	10100609-434200	GENERAL MATERIALS	1.05
	2032354899	53024	BAKER & TAYLOR BOOKS	10100609-434200	GENERAL MATERIALS	1.05
	2032345903	53002	BAKER & TAYLOR BOOKS	10100609-434200	GENERAL MATERIALS	1.05
	2032345904	53003	BAKER & TAYLOR BOOKS	10100609-434200	GENERAL MATERIALS	8.30
	2032345905	53004	BAKER & TAYLOR BOOKS	10100609-434200	GENERAL MATERIALS	0.25
	2032354889	53005	BAKER & TAYLOR BOOKS	10100609-434200	GENERAL MATERIALS	9.20
	2032354890	53006	BAKER & TAYLOR BOOKS	10100609-434200	GENERAL MATERIALS	21.35
	2032354891	53007	BAKER & TAYLOR BOOKS	10100609-434200	GENERAL MATERIALS	1.05
	2032354895	52991	BAKER & TAYLOR BOOKS	10100609-434200	GENERAL MATERIALS	2.10
	2032345640	52997	BAKER & TAYLOR BOOKS	10100609-434200	GENERAL MATERIALS	0.25
	2032345899	52998	BAKER & TAYLOR BOOKS	10100609-434200	GENERAL MATERIALS	1.05
	2032345900	52999	BAKER & TAYLOR BOOKS	10100609-434200	GENERAL MATERIALS	2.10
	2032345901	53000	BAKER & TAYLOR BOOKS	10100609-434200	GENERAL MATERIALS	1.05
	2032345902	53001	BAKER & TAYLOR BOOKS	10100609-434200	GENERAL MATERIALS	2.10
	2032354894	52989	BAKER & TAYLOR BOOKS	10100609-434200	GENERAL MATERIALS	0.40
	2032345638	52808	BAKER & TAYLOR BOOKS	10100609-434200	GENERAL MATERIALS	0.40
	2032345639	52809	BAKER & TAYLOR BOOKS	10100609-434200	GENERAL MATERIALS	1.05
	2032345631	52802	BAKER & TAYLOR BOOKS	10100609-434200	GENERAL MATERIALS	0.25
	2032345633	52803	BAKER & TAYLOR BOOKS	10100609-434200	GENERAL MATERIALS	0.25
	2032345634	52804	BAKER & TAYLOR BOOKS	10100609-434200	GENERAL MATERIALS	0.25
	2032345635	52805	BAKER & TAYLOR BOOKS	10100609-434200	GENERAL MATERIALS	0.25
	2032345636	52806	BAKER & TAYLOR BOOKS	10100609-434200	GENERAL MATERIALS	1.05
	2032345637	52807	BAKER & TAYLOR BOOKS	10100609-434200	GENERAL MATERIALS	0.40
	2032345624	52546	BAKER & TAYLOR BOOKS	10100609-434200	GENERAL MATERIALS	0.25
	2032345625	52547	BAKER & TAYLOR BOOKS	10100609-434200	GENERAL MATERIALS	1.05
	2032345626	52548	BAKER & TAYLOR BOOKS	10100609-434200	GENERAL MATERIALS	9.10
	2032345627	52549	BAKER & TAYLOR BOOKS	10100609-434200	GENERAL MATERIALS	1.45
	2032345628	52550	BAKER & TAYLOR BOOKS	10100609-434200	GENERAL MATERIALS	27.85

356	2032345630	52801	BAKER & TAYLOR BOOKS	10100609-434200	GENERAL MATERIALS	1.05
	2032345618	52540	BAKER & TAYLOR BOOKS	10100609-434200	GENERAL MATERIALS	0.40
	2032345619	52541	BAKER & TAYLOR BOOKS	10100609-434200	GENERAL MATERIALS	1.30
	2032345620	52542	BAKER & TAYLOR BOOKS	10100609-434200	GENERAL MATERIALS	6.30
	2032345621	52543	BAKER & TAYLOR BOOKS	10100609-434200	GENERAL MATERIALS	9.45
	2032345622	52544	BAKER & TAYLOR BOOKS	10100609-434200	GENERAL MATERIALS	0.50
	2032345623	52545	BAKER & TAYLOR BOOKS	10100609-434200	GENERAL MATERIALS	7.60
	2032345612	52534	BAKER & TAYLOR BOOKS	10100609-434200	GENERAL MATERIALS	11.70
	2032345613	52535	BAKER & TAYLOR BOOKS	10100609-434200	GENERAL MATERIALS	0.80
	2032345614	52536	BAKER & TAYLOR BOOKS	10100609-434200	GENERAL MATERIALS	3.40
	2032345615	52537	BAKER & TAYLOR BOOKS	10100609-434200	GENERAL MATERIALS	2.60
	2032345616	52538	BAKER & TAYLOR BOOKS	10100609-434200	GENERAL MATERIALS	1.60
	2032345617	52539	BAKER & TAYLOR BOOKS	10100609-434200	GENERAL MATERIALS	0.25
	2032314044	52528	BAKER & TAYLOR BOOKS	10100609-434200	GENERAL MATERIALS	1.05
	2032314045	52529	BAKER & TAYLOR BOOKS	10100609-434200	GENERAL MATERIALS	3.40
	2032314046	52530	BAKER & TAYLOR BOOKS	10100609-434200	GENERAL MATERIALS	0.40
	2032314047	52531	BAKER & TAYLOR BOOKS	10100609-434200	GENERAL MATERIALS	0.40
	2032345610	52532	BAKER & TAYLOR BOOKS	10100609-434200	GENERAL MATERIALS	0.65
	2032345611	52533	BAKER & TAYLOR BOOKS	10100609-434200	GENERAL MATERIALS	1.05
	2032314037	52522	BAKER & TAYLOR BOOKS	10100609-434200	GENERAL MATERIALS	2.75
	2032314038	52523	BAKER & TAYLOR BOOKS	10100609-434200	GENERAL MATERIALS	1.05
	2032314039	52524	BAKER & TAYLOR BOOKS	10100609-434200	GENERAL MATERIALS	0.25
	2032314040	52525	BAKER & TAYLOR BOOKS	10100609-434200	GENERAL MATERIALS	1.05
	2032314042	52526	BAKER & TAYLOR BOOKS	10100609-434200	GENERAL MATERIALS	1.05
	2032314043	52527	BAKER & TAYLOR BOOKS	10100609-434200	GENERAL MATERIALS	0.90
	2032314031	52516	BAKER & TAYLOR BOOKS	10100609-434200	GENERAL MATERIALS	5.65
	2032314032	52517	BAKER & TAYLOR BOOKS	10100609-434200	GENERAL MATERIALS	1.45
	2032314033	52518	BAKER & TAYLOR BOOKS	10100609-434200	GENERAL MATERIALS	11.10
	2032314034	52519	BAKER & TAYLOR BOOKS	10100609-434200	GENERAL MATERIALS	1.05
	2032314035	52520	BAKER & TAYLOR BOOKS	10100609-434200	GENERAL MATERIALS	0.25

356	2032314036	52521	BAKER & TAYLOR BOOKS	10100609-434200	GENERAL MATERIALS	4.20
	2032314025	52510	BAKER & TAYLOR BOOKS	10100609-434200	GENERAL MATERIALS	1.70
	2032314026	52511	BAKER & TAYLOR BOOKS	10100609-434200	GENERAL MATERIALS	0.40
	2032314027	52512	BAKER & TAYLOR BOOKS	10100609-434200	GENERAL MATERIALS	0.40
	2032314028	52513	BAKER & TAYLOR BOOKS	10100609-434200	GENERAL MATERIALS	0.25
	2032314029	52514	BAKER & TAYLOR BOOKS	10100609-434200	GENERAL MATERIALS	0.40
	2032314030	52515	BAKER & TAYLOR BOOKS	10100609-434200	GENERAL MATERIALS	2.75
	2032324089	52236	BAKER & TAYLOR BOOKS	10100609-434200	GENERAL MATERIALS	7.85
	2032328184	52237	BAKER & TAYLOR BOOKS	10100609-434200	GENERAL MATERIALS	1.05
	2032300983	52507	BAKER & TAYLOR BOOKS	10100609-434200	GENERAL MATERIALS	13.80
	2032300981	52508	BAKER & TAYLOR BOOKS	10100609-434200	GENERAL MATERIALS	6.60
	2032293393	52509	BAKER & TAYLOR BOOKS	10100609-434200	GENERAL MATERIALS	36.20
	2032336198	52147	BAKER & TAYLOR BOOKS	10100609-434200	GENERAL MATERIALS	1.05
	2032336199	52148	BAKER & TAYLOR BOOKS	10100609-434200	GENERAL MATERIALS	2.10
	2032336200	52149	BAKER & TAYLOR BOOKS	10100609-434200	GENERAL MATERIALS	1.95
	2032336201	52150	BAKER & TAYLOR BOOKS	10100609-434200	GENERAL MATERIALS	1.95
	2032336202	52151	BAKER & TAYLOR BOOKS	10100609-434200	GENERAL MATERIALS	0.25
	2032336203	52152	BAKER & TAYLOR BOOKS	10100609-434200	GENERAL MATERIALS	1.05
	2032328189	52141	BAKER & TAYLOR BOOKS	10100609-434200	GENERAL MATERIALS	1.05
	2032328190	52142	BAKER & TAYLOR BOOKS	10100609-434200	GENERAL MATERIALS	0.25
	2032336194	52143	BAKER & TAYLOR BOOKS	10100609-434200	GENERAL MATERIALS	2.75
	2032336195	52144	BAKER & TAYLOR BOOKS	10100609-434200	GENERAL MATERIALS	0.25
	2032336196	52145	BAKER & TAYLOR BOOKS	10100609-434200	GENERAL MATERIALS	0.40
	2032336197	52146	BAKER & TAYLOR BOOKS	10100609-434200	GENERAL MATERIALS	5.10
	2032324087	52135	BAKER & TAYLOR BOOKS	10100609-434200	GENERAL MATERIALS	5.25
	2032324088	52136	BAKER & TAYLOR BOOKS	10100609-434200	GENERAL MATERIALS	1.05
	2032328185	52137	BAKER & TAYLOR BOOKS	10100609-434200	GENERAL MATERIALS	0.40
	2032328186	52138	BAKER & TAYLOR BOOKS	10100609-434200	GENERAL MATERIALS	0.25
	2032328187	52139	BAKER & TAYLOR BOOKS	10100609-434200	GENERAL MATERIALS	1.05
	2032328188	52140	BAKER & TAYLOR BOOKS	10100609-434200	GENERAL MATERIALS	1.15

356	2032324081	52129	BAKER & TAYLOR BOOKS	10100609-434200	GENERAL MATERIALS	1.05
	2032324082	52130	BAKER & TAYLOR BOOKS	10100609-434200	GENERAL MATERIALS	1.20
	2032324083	52131	BAKER & TAYLOR BOOKS	10100609-434200	GENERAL MATERIALS	1.05
	2032324084	52132	BAKER & TAYLOR BOOKS	10100609-434200	GENERAL MATERIALS	7.75
	2032324085	52133	BAKER & TAYLOR BOOKS	10100609-434200	GENERAL MATERIALS	1.05
	2032324086	52134	BAKER & TAYLOR BOOKS	10100609-434200	GENERAL MATERIALS	8.15
	2032328183	52069	BAKER & TAYLOR BOOKS	10100609-434200	GENERAL MATERIALS	2.10
	2032324076	52124	BAKER & TAYLOR BOOKS	10100609-434200	GENERAL MATERIALS	0.25
	2032324077	52125	BAKER & TAYLOR BOOKS	10100609-434200	GENERAL MATERIALS	6.85
	2032324078	52126	BAKER & TAYLOR BOOKS	10100609-434200	GENERAL MATERIALS	1.05
	2032327079	52127	BAKER & TAYLOR BOOKS	10100609-434200	GENERAL MATERIALS	2.25
	2032324080	52128	BAKER & TAYLOR BOOKS	10100609-434200	GENERAL MATERIALS	0.25
	2032328177	52063	BAKER & TAYLOR BOOKS	10100609-434200	GENERAL MATERIALS	1.05
	2032328178	52064	BAKER & TAYLOR BOOKS	10100609-434200	GENERAL MATERIALS	6.30
	2032328179	52065	BAKER & TAYLOR BOOKS	10100609-434200	GENERAL MATERIALS	6.55
	2032328180	52066	BAKER & TAYLOR BOOKS	10100609-434200	GENERAL MATERIALS	3.30
	2032328181	52067	BAKER & TAYLOR BOOKS	10100609-434200	GENERAL MATERIALS	0.40
	2032328182	52068	BAKER & TAYLOR BOOKS	10100609-434200	GENERAL MATERIALS	1.05
	2032324092	52057	BAKER & TAYLOR BOOKS	10100609-434200	GENERAL MATERIALS	1.05
	2032324093	52058	BAKER & TAYLOR BOOKS	10100609-434200	GENERAL MATERIALS	0.40
	2032328173	52059	BAKER & TAYLOR BOOKS	10100609-434200	GENERAL MATERIALS	0.40
	2032328174	52060	BAKER & TAYLOR BOOKS	10100609-434200	GENERAL MATERIALS	0.80
	2032328175	52061	BAKER & TAYLOR BOOKS	10100609-434200	GENERAL MATERIALS	2.10
	2032328176	52062	BAKER & TAYLOR BOOKS	10100609-434200	GENERAL MATERIALS	5.00
	2032324090	52055	BAKER & TAYLOR BOOKS	10100609-434200	GENERAL MATERIALS	0.40
	2032324091	52056	BAKER & TAYLOR BOOKS	10100609-434200	GENERAL MATERIALS	8.40
	2032293385	52463	BAKER & TAYLOR BOOKS	10100610-434100	GENERAL MATERIALS	33.08
	2032293386	52464	BAKER & TAYLOR BOOKS	10100610-434100	GENERAL MATERIALS	11.84
	2032293387	52465	BAKER & TAYLOR BOOKS	10100610-434100	GENERAL MATERIALS	9.47
	2032293388	52466	BAKER & TAYLOR BOOKS	10100610-434100	GENERAL MATERIALS	15.68

356	2032293389	52467	BAKER & TAYLOR BOOKS	10100610-434100	GENERAL MATERIALS	8.99
	2032293392	52470	BAKER & TAYLOR BOOKS	10100610-434100	GENERAL MATERIALS	9.59
	2032293391	52615	BAKER & TAYLOR BOOKS	10100610-434100	GENERAL MATERIALS	15.09
	2032293528	52996	BAKER & TAYLOR BOOKS	10100610-434100	GENERAL MATERIALS	14.21
	2032314021	52502	BAKER & TAYLOR BOOKS	10100610-434100	GENERAL MATERIALS	9.59
	2032314022	52503	BAKER & TAYLOR BOOKS	10100610-434100	GENERAL MATERIALS	18.20
	2032314023	52504	BAKER & TAYLOR BOOKS	10100610-434100	GENERAL MATERIALS	2.97
	2032314024	52505	BAKER & TAYLOR BOOKS	10100610-434100	GENERAL MATERIALS	17.34
	2032314041	52506	BAKER & TAYLOR BOOKS	10100610-434100	GENERAL MATERIALS	7.20
	2032293390	52614	BAKER & TAYLOR BOOKS	10100610-434100	GENERAL MATERIALS	15.12
	2032300979	52496	BAKER & TAYLOR BOOKS	10100610-434100	GENERAL MATERIALS	14.26
	2032300980	52497	BAKER & TAYLOR BOOKS	10100610-434100	GENERAL MATERIALS	8.99
	2032300982	52498	BAKER & TAYLOR BOOKS	10100610-434100	GENERAL MATERIALS	15.19
	2032300984	52499	BAKER & TAYLOR BOOKS	10100610-434100	GENERAL MATERIALS	13.42
	2032300985	52500	BAKER & TAYLOR BOOKS	10100610-434100	GENERAL MATERIALS	3.91
	2032300986	52501	BAKER & TAYLOR BOOKS	10100610-434100	GENERAL MATERIALS	12.63
	2032293523	52490	BAKER & TAYLOR BOOKS	10100610-434100	GENERAL MATERIALS	15.15
	2032293524	52491	BAKER & TAYLOR BOOKS	10100610-434100	GENERAL MATERIALS	9.51
	2032293525	52492	BAKER & TAYLOR BOOKS	10100610-434100	GENERAL MATERIALS	13.39
	2032293526	52493	BAKER & TAYLOR BOOKS	10100610-434100	GENERAL MATERIALS	78.90
	2032293527	52494	BAKER & TAYLOR BOOKS	10100610-434100	GENERAL MATERIALS	38.00
	2032293529	52495	BAKER & TAYLOR BOOKS	10100610-434100	GENERAL MATERIALS	13.55
	2032293517	52483	BAKER & TAYLOR BOOKS	10100610-434100	GENERAL MATERIALS	9.51
	2032293518	52484	BAKER & TAYLOR BOOKS	10100610-434100	GENERAL MATERIALS	23.95
	2032293519	52485	BAKER & TAYLOR BOOKS	10100610-434100	GENERAL MATERIALS	11.19
	2032293520	52486	BAKER & TAYLOR BOOKS	10100610-434100	GENERAL MATERIALS	16.80
	2032293521	52487	BAKER & TAYLOR BOOKS	10100610-434100	GENERAL MATERIALS	28.54
	2032293522	52488	BAKER & TAYLOR BOOKS	10100610-434100	GENERAL MATERIALS	16.10
	2032293394	52471	BAKER & TAYLOR BOOKS	10100610-434100	GENERAL MATERIALS	5.69
	2032293395	52472	BAKER & TAYLOR BOOKS	10100610-434100	GENERAL MATERIALS	14.21

356	2032293396	52477	BAKER & TAYLOR BOOKS	10100610-434100	GENERAL MATERIALS	25.20
	2032293397	52479	BAKER & TAYLOR BOOKS	10100610-434100	GENERAL MATERIALS	13.97
	2032293515	52481	BAKER & TAYLOR BOOKS	10100610-434100	GENERAL MATERIALS	2.39
	2032293516	52482	BAKER & TAYLOR BOOKS	10100610-434100	GENERAL MATERIALS	19.02
	2032293385	52463	BAKER & TAYLOR BOOKS	10100610-434200	GENERAL MATERIALS	2.25
	2032293386	52464	BAKER & TAYLOR BOOKS	10100610-434200	GENERAL MATERIALS	0.40
	2032293387	52465	BAKER & TAYLOR BOOKS	10100610-434200	GENERAL MATERIALS	0.25
	2032293388	52466	BAKER & TAYLOR BOOKS	10100610-434200	GENERAL MATERIALS	1.05
	2032293389	52467	BAKER & TAYLOR BOOKS	10100610-434200	GENERAL MATERIALS	0.25
	2032293390	52614	BAKER & TAYLOR BOOKS	10100610-434200	GENERAL MATERIALS	1.05
	2032293391	52615	BAKER & TAYLOR BOOKS	10100610-434200	GENERAL MATERIALS	1.05
	2032293528	52996	BAKER & TAYLOR BOOKS	10100610-434200	GENERAL MATERIALS	1.05
	2032300986	52501	BAKER & TAYLOR BOOKS	10100610-434200	GENERAL MATERIALS	1.05
	2032314021	52502	BAKER & TAYLOR BOOKS	10100610-434200	GENERAL MATERIALS	0.25
	2032314022	52503	BAKER & TAYLOR BOOKS	10100610-434200	GENERAL MATERIALS	1.05
	2032314023	52504	BAKER & TAYLOR BOOKS	10100610-434200	GENERAL MATERIALS	0.40
	2032314024	52505	BAKER & TAYLOR BOOKS	10100610-434200	GENERAL MATERIALS	1.30
	2032314041	52506	BAKER & TAYLOR BOOKS	10100610-434200	GENERAL MATERIALS	0.25
	2032293529	52495	BAKER & TAYLOR BOOKS	10100610-434200	GENERAL MATERIALS	0.40
	2032300979	52496	BAKER & TAYLOR BOOKS	10100610-434200	GENERAL MATERIALS	1.45
	2032300980	52497	BAKER & TAYLOR BOOKS	10100610-434200	GENERAL MATERIALS	0.40
	2032300982	52498	BAKER & TAYLOR BOOKS	10100610-434200	GENERAL MATERIALS	0.40
	2032300984	52499	BAKER & TAYLOR BOOKS	10100610-434200	GENERAL MATERIALS	0.25
	2032300985	52500	BAKER & TAYLOR BOOKS	10100610-434200	GENERAL MATERIALS	0.40
	2032293522	52488	BAKER & TAYLOR BOOKS	10100610-434200	GENERAL MATERIALS	0.25
	2032293523	52490	BAKER & TAYLOR BOOKS	10100610-434200	GENERAL MATERIALS	0.40
	2032293524	52491	BAKER & TAYLOR BOOKS	10100610-434200	GENERAL MATERIALS	1.05
	2032293525	52492	BAKER & TAYLOR BOOKS	10100610-434200	GENERAL MATERIALS	0.40
	2032293526	52493	BAKER & TAYLOR BOOKS	10100610-434200	GENERAL MATERIALS	6.20
	2032293527	52494	BAKER & TAYLOR BOOKS	10100610-434200	GENERAL MATERIALS	1.05

356	2032293516	52482	BAKER & TAYLOR BOOKS	10100610-434200	GENERAL MATERIALS	2.10
	2032293517	52483	BAKER & TAYLOR BOOKS	10100610-434200	GENERAL MATERIALS	1.05
	2032293518	52484	BAKER & TAYLOR BOOKS	10100610-434200	GENERAL MATERIALS	0.40
	2032293519	52485	BAKER & TAYLOR BOOKS	10100610-434200	GENERAL MATERIALS	1.05
	2032293520	52486	BAKER & TAYLOR BOOKS	10100610-434200	GENERAL MATERIALS	1.05
	2032293521	52487	BAKER & TAYLOR BOOKS	10100610-434200	GENERAL MATERIALS	1.95
	2032293392	52470	BAKER & TAYLOR BOOKS	10100610-434200	GENERAL MATERIALS	0.25
	2032293394	52471	BAKER & TAYLOR BOOKS	10100610-434200	GENERAL MATERIALS	0.40
	2032293395	52472	BAKER & TAYLOR BOOKS	10100610-434200	GENERAL MATERIALS	1.05
	2032293396	52477	BAKER & TAYLOR BOOKS	10100610-434200	GENERAL MATERIALS	0.25
	2032293397	52479	BAKER & TAYLOR BOOKS	10100610-434200	GENERAL MATERIALS	1.05
	2032293515	52481	BAKER & TAYLOR BOOKS	10100610-434200	GENERAL MATERIALS	0.40
				BAKER & TAYLOR BOOKS Total:	10,399.28	
527	124067	41046	BEST WESTERN RAMKOTA HOTEL	10100609-427000	SDLA HOTEL - TAFOYA	275.97
	122714	41048	BEST WESTERN RAMKOTA HOTEL	10100609-427000	SDLA HOTEL - TAPPER	275.97
					BEST WESTERN RAMKOTA HOTEL Total:	551.94
988	819626	52602	CHRIS SUPPLY COMPANY INC	10100610-429500	COMPUTERS/SOFTWARE	212.06
	821036	52785	CHRIS SUPPLY COMPANY INC	10100610-429500	COMPUTERS/SOFTWARE	921.72
	819750		CHRIS SUPPLY COMPANY INC	10100610-429500	CR RTN FIB OPTIC MEDIA CONVERTR	(106.03)
					CHRIS SUPPLY COMPANY INC Total:	1,027.75
1044	11866	52981	CLIMATE CONTROL SYSTEMS & SERVICE	10100609-422500	STRUCTURE	306.00
	11620	51565	CLIMATE CONTROL SYSTEMS & SERVICE	10100609-425200	STRUCTURE	1,762.00
	11866	52981	CLIMATE CONTROL SYSTEMS & SERVICE	10100609-425200	STRUCTURE	66.45
					CLIMATE CONTROL SYSTEMS & SERVICE Total:	2,134.45
8526	10/15/16	53078	CUSTER AREA ARTS COUNCIL INC	10100609-422500	PROGRAMMING-ADULT	150.00

8526					CUSTER AREA ARTS COUNCIL INC Total:	150.00
1234	IN307090	51592	DAKOTA BUSINESS CENTER	10100609-425300	MACHINES/EQUIPMENT	38.00
	IN307654	51632	DAKOTA BUSINESS CENTER	10100609-425300	MACHINES/EQUIPMENT	492.12
	IN307655	51666	DAKOTA BUSINESS CENTER	10100609-425300	MACHINES/EQUIPMENT	462.40
	IN307656	51674	DAKOTA BUSINESS CENTER	10100609-425300	MACHINES/EQUIPMENT	106.98
	IN308200	52982	DAKOTA BUSINESS CENTER	10100609-425300	MACHINES/EQUIPMENT	39.01
	IN307654	51632	DAKOTA BUSINESS CENTER	10100609-426100	MACHINES/EQUIPMENT	0.72
	IN307655	51666	DAKOTA BUSINESS CENTER	10100609-426100	MACHINES/EQUIPMENT	18.51
	IN307656	51674	DAKOTA BUSINESS CENTER	10100609-426100	MACHINES/EQUIPMENT	192.31
	IN307654	51632	DAKOTA BUSINESS CENTER	99600971-424400	MACHINES/EQUIPMENT	317.58
	IN307655	51666	DAKOTA BUSINESS CENTER	99600971-424400	MACHINES/EQUIPMENT	651.21
	IN307656	51674	DAKOTA BUSINESS CENTER	99600971-424400	MACHINES/EQUIPMENT	141.97
	IN308200	52982	DAKOTA BUSINESS CENTER	99600971-424400	MACHINES/EQUIPMENT	176.64
					DAKOTA BUSINESS CENTER Total:	2,637.45
1248	100405608	52610	DAKOTA PARTY	10100609-429400	PROGRAMMING-YOUTH	34.86
	100403189	52235	DAKOTA PARTY	10100610-429400	PROGRAMMING-ADULT	29.70
	52607	52607	DAKOTA PARTY	10100610-429400	PROGRAMMING-ADULT	14.94
					DAKOTA PARTY Total:	79.50
6919	06/22/16- 06/28/16	44834	DASILVA, LISA	10100609-427000	TRAVEL/TRAINING	54.00
	06/22/16- 06/28/16	44834	DASILVA, LISA	10100610-427000	TRAVEL/TRAINING	246.00
					DASILVA, LISA Total:	300.00
1322	XK1TDFCR7	50947	DELL MARKETING LP	10100609-429500	COMPUTERS/SOFTWARE	269.00
					DELL MARKETING LP Total:	269.00
1326	5993817	52324	DEMCO INC	10100609-434200	GENERAL MATERIALS	61.94
					DEMCO INC Total:	61.94
8528	M6100433	52884	DYMAXION RESEARCH LTD.	10100609-429500	COMPUTERS/SOFTWARE	292.00
					DYMAXION RESEARCH LTD. Total:	292.00

1789	09/30/16	51673	FRIENDS OF THE LIBRARY	99600971-453000	REFUNDS	1,034.20
					FRIENDS OF THE LIBRARY Total:	1,034.20
2168	309984-0	52812	HEARTLAND PAPER CO	10100609-426400	MAINTENANCE/FACILITIES	92.72
	307744-0	52813	HEARTLAND PAPER CO	10100609-426400	MAINTENANCE/FACILITIES	131.46
	305722-0	52900	HEARTLAND PAPER CO	10100609-426400	MAINTENANCE/FACILITIES	69.42
	307740-0	52901	HEARTLAND PAPER CO	10100609-426400	MAINTENANCE/FACILITIES	62.78
	302037-0	51566	HEARTLAND PAPER CO	10100610-426400	MAINTENANCE/FACILITIES	21.76
	301657-0	51567	HEARTLAND PAPER CO	10100610-426400	MAINTENANCE/FACILITIES	14.84
	301655-0	51568	HEARTLAND PAPER CO	10100610-426400	MAINTENANCE/FACILITIES	57.38
	297474-0	51569	HEARTLAND PAPER CO	10100610-426400	MAINTENANCE/FACILITIES	62.96
	287903-0	51570	HEARTLAND PAPER CO	10100610-426400	MAINTENANCE/FACILITIES	162.14
					HEARTLAND PAPER CO Total:	675.46
2386	2016197	52994	ID CARDS UNLIMITED	10100609-426100	SUPPLIES	1,738.60
					ID CARDS UNLIMITED Total:	1,738.60
2498	06946	52995	JANTECH LLC	10100610-422500	MAINTENANCE/FACILITIES	220.00
					JANTECH LLC Total:	220.00
2719	957671	52613	KNECHT HOME CENTER	10100610-426400	MAINTENANCE/FACILITIES	11.58
					KNECHT HOME CENTER Total:	11.58
8346	08/08/16	52603	KUNTZ, KATHRYN	10100609-427000	TRAVEL/TRAINING	555.52
					KUNTZ, KATHRYN Total:	555.52
4751	062216-062816	44833	LAURINDA TAPPER	10100609-427000	TRAVEL/TRAINING	300.00
	09/27/16-09/30/16	52811	LAURINDA TAPPER	10100609-427000	TRAVEL/TRAINING	80.00
					LAURINDA TAPPER Total:	380.00
6181	517075	52232	LIVING DESIGN	10100609-422500	DECOR	125.00
					LIVING DESIGN Total:	125.00
3208	170	52993	MENARDS	10100609-425100	MAINTENANCE/FACILITIES	3.34
	170	52993	MENARDS	10100609-425200	MAINTENANCE/FACILITIES	17.77
	170	52993	MENARDS	10100609-426100	MAINTENANCE/FACILITIES	36.81

3208	98423	52992	MENARDS	10100609-426300	MAINTENANCE/FACILITIES	2.50
	170	52993	MENARDS	10100609-426300	MAINTENANCE/FACILITIES	2.98
	98548	52885	MENARDS	10100609-426400	MAINTENANCE/FACILITIES	21.76
	98423	52992	MENARDS	10100609-426400	MAINTENANCE/FACILITIES	97.11
	170	52993	MENARDS	10100609-426400	MAINTENANCE/FACILITIES	3.56
	98548	52885	MENARDS	10100609-426500	MAINTENANCE/FACILITIES	16.58
	170	52993	MENARDS	10100609-426500	MAINTENANCE/FACILITIES	34.57
	1893	52965	MENARDS	10100609-429400	MAINTENANCE/FACILITIES	79.58
					MENARDS Total:	316.56
3234	7892395246	53016	MICK'S ELECTRIC INC	10100610-422500	COMPUTERS/SOFTWARE	112.50
	7892395246	53016	MICK'S ELECTRIC INC	10100610-429500	COMPUTERS/SOFTWARE	33.23
					MICK'S ELECTRIC INC Total:	145.73
3258	94354761	51686	MIDWEST TAPE EXCHANGE	10100609-434100	GENERAL MATERIALS	64.98
	94354760	51687	MIDWEST TAPE EXCHANGE	10100609-434100	GENERAL MATERIALS	54.98
	94399419	52826	MIDWEST TAPE EXCHANGE	10100609-434100	GENERAL MATERIALS	44.99
	94437806	52847	MIDWEST TAPE EXCHANGE	10100609-434100	GENERAL MATERIALS	39.99
	94371141	52814	MIDWEST TAPE EXCHANGE	10100609-434100	GENERAL MATERIALS	16.99
	94371140	52815	MIDWEST TAPE EXCHANGE	10100609-434100	GENERAL MATERIALS	69.98
	94371139	52816	MIDWEST TAPE EXCHANGE	10100609-434100	GENERAL MATERIALS	74.98
	94371138	52817	MIDWEST TAPE EXCHANGE	10100609-434100	GENERAL MATERIALS	34.99
	94353310	51688	MIDWEST TAPE EXCHANGE	10100609-434200	GENERAL MATERIALS	2.50
	94344031	51689	MIDWEST TAPE EXCHANGE	10100609-434200	GENERAL MATERIALS	2.50
	94344029	51690	MIDWEST TAPE EXCHANGE	10100609-434200	GENERAL MATERIALS	17.50
	94354832	51691	MIDWEST TAPE EXCHANGE	10100609-434200	GENERAL MATERIALS	10.00
	94354833	51692	MIDWEST TAPE EXCHANGE	10100609-434200	GENERAL MATERIALS	2.50
	94364102	51693	MIDWEST TAPE EXCHANGE	10100609-434200	GENERAL MATERIALS	7.50
	94412830	53053	MIDWEST TAPE EXCHANGE	10100609-434200	GENERAL MATERIALS	5.00
	94455970	52914	MIDWEST TAPE EXCHANGE	10100609-434200	GENERAL MATERIALS	7.50
	94455969	52915	MIDWEST TAPE EXCHANGE	10100609-434200	GENERAL MATERIALS	2.50
	94455967	52916	MIDWEST TAPE EXCHANGE	10100609-434200	GENERAL MATERIALS	5.00

3258	94455971	52917	MIDWEST TAPE EXCHANGE	10100609-434200	GENERAL MATERIALS	5.00
	94432691	52848	MIDWEST TAPE EXCHANGE	10100609-434200	GENERAL MATERIALS	2.50
	94432690	52849	MIDWEST TAPE EXCHANGE	10100609-434200	GENERAL MATERIALS	5.00
	94432689	52850	MIDWEST TAPE EXCHANGE	10100609-434200	GENERAL MATERIALS	5.00
	94432687	52851	MIDWEST TAPE EXCHANGE	10100609-434200	GENERAL MATERIALS	5.00
	94429365	52852	MIDWEST TAPE EXCHANGE	10100609-434200	GENERAL MATERIALS	10.00
	94378995	52853	MIDWEST TAPE EXCHANGE	10100609-434200	GENERAL MATERIALS	69.60
	94412829	52841	MIDWEST TAPE EXCHANGE	10100609-434200	GENERAL MATERIALS	5.00
	94412828	52842	MIDWEST TAPE EXCHANGE	10100609-434200	GENERAL MATERIALS	2.50
	94412826	52843	MIDWEST TAPE EXCHANGE	10100609-434200	GENERAL MATERIALS	20.00
	94412825	52844	MIDWEST TAPE EXCHANGE	10100609-434200	GENERAL MATERIALS	2.50
	94405827	52845	MIDWEST TAPE EXCHANGE	10100609-434200	GENERAL MATERIALS	10.00
	94429364	52846	MIDWEST TAPE EXCHANGE	10100609-434200	GENERAL MATERIALS	7.50
	94384832	52835	MIDWEST TAPE EXCHANGE	10100609-434200	GENERAL MATERIALS	5.00
	94429362	52836	MIDWEST TAPE EXCHANGE	10100609-434200	GENERAL MATERIALS	2.50
	94429361	52837	MIDWEST TAPE EXCHANGE	10100609-434200	GENERAL MATERIALS	2.50
	94425624	52838	MIDWEST TAPE EXCHANGE	10100609-434200	GENERAL MATERIALS	25.00
	94425623	52839	MIDWEST TAPE EXCHANGE	10100609-434200	GENERAL MATERIALS	2.50
	94412831	52840	MIDWEST TAPE EXCHANGE	10100609-434200	GENERAL MATERIALS	2.50
	94391630	52829	MIDWEST TAPE EXCHANGE	10100609-434200	GENERAL MATERIALS	2.50
	94391628	52830	MIDWEST TAPE EXCHANGE	10100609-434200	GENERAL MATERIALS	12.50
	94391626	52831	MIDWEST TAPE EXCHANGE	10100609-434200	GENERAL MATERIALS	5.00
	94384830	52832	MIDWEST TAPE EXCHANGE	10100609-434200	GENERAL MATERIALS	17.50
	94384834	52833	MIDWEST TAPE EXCHANGE	10100609-434200	GENERAL MATERIALS	5.00
	94405825	52834	MIDWEST TAPE EXCHANGE	10100609-434200	GENERAL MATERIALS	2.50
	94367591	52822	MIDWEST TAPE EXCHANGE	10100609-434200	GENERAL MATERIALS	22.50
	94367589	52823	MIDWEST TAPE EXCHANGE	10100609-434200	GENERAL MATERIALS	17.50
	94405824	52824	MIDWEST TAPE EXCHANGE	10100609-434200	GENERAL MATERIALS	7.50
	94405823	52825	MIDWEST TAPE EXCHANGE	10100609-434200	GENERAL MATERIALS	5.00
	94391629	52827	MIDWEST TAPE EXCHANGE	10100609-434200	GENERAL MATERIALS	15.00

3258	94391631	52828	MIDWEST TAPE EXCHANGE	10100609-434200	GENERAL MATERIALS	47.50
	94367595	52818	MIDWEST TAPE EXCHANGE	10100609-434200	GENERAL MATERIALS	2.50
	94367594	52819	MIDWEST TAPE EXCHANGE	10100609-434200	GENERAL MATERIALS	5.00
	94367593	52820	MIDWEST TAPE EXCHANGE	10100609-434200	GENERAL MATERIALS	2.50
	94367592	52821	MIDWEST TAPE EXCHANGE	10100609-434200	GENERAL MATERIALS	5.00
	94364295	51694	MIDWEST TAPE EXCHANGE	10100609-434200	GENERAL MATERIALS	15.00
	94364296	51695	MIDWEST TAPE EXCHANGE	10100609-434200	GENERAL MATERIALS	5.00
	94364293	51696	MIDWEST TAPE EXCHANGE	10100609-434200	GENERAL MATERIALS	5.00
	93940493	51705	MIDWEST TAPE EXCHANGE	10100609-434200	GENERAL MATERIALS	2.50
	94353310	51688	MIDWEST TAPE EXCHANGE	10100609-434600	GENERAL MATERIALS	17.24
	94344031	51689	MIDWEST TAPE EXCHANGE	10100609-434600	GENERAL MATERIALS	11.24
	94344029	51690	MIDWEST TAPE EXCHANGE	10100609-434600	GENERAL MATERIALS	81.68
	94354832	51691	MIDWEST TAPE EXCHANGE	10100609-434600	GENERAL MATERIALS	54.71
	94354833	51692	MIDWEST TAPE EXCHANGE	10100609-434600	GENERAL MATERIALS	22.49
	94364102	51693	MIDWEST TAPE EXCHANGE	10100609-434600	GENERAL MATERIALS	67.47
	94429365	52852	MIDWEST TAPE EXCHANGE	10100609-434600	GENERAL MATERIALS	76.46
	94455970	52914	MIDWEST TAPE EXCHANGE	10100609-434600	GENERAL MATERIALS	50.22
	94455969	52915	MIDWEST TAPE EXCHANGE	10100609-434600	GENERAL MATERIALS	11.24
	94455967	52916	MIDWEST TAPE EXCHANGE	10100609-434600	GENERAL MATERIALS	40.48
	94455971	52917	MIDWEST TAPE EXCHANGE	10100609-434600	GENERAL MATERIALS	29.98
	94412830	53053	MIDWEST TAPE EXCHANGE	10100609-434600	GENERAL MATERIALS	33.73
	94405827	52845	MIDWEST TAPE EXCHANGE	10100609-434600	GENERAL MATERIALS	78.71
	94429364	52846	MIDWEST TAPE EXCHANGE	10100609-434600	GENERAL MATERIALS	37.47
	94432691	52848	MIDWEST TAPE EXCHANGE	10100609-434600	GENERAL MATERIALS	11.24
	94432690	52849	MIDWEST TAPE EXCHANGE	10100609-434600	GENERAL MATERIALS	39.73
	94432689	52850	MIDWEST TAPE EXCHANGE	10100609-434600	GENERAL MATERIALS	44.98
	94432687	52851	MIDWEST TAPE EXCHANGE	10100609-434600	GENERAL MATERIALS	44.98
	94425623	52839	MIDWEST TAPE EXCHANGE	10100609-434600	GENERAL MATERIALS	18.74
	94412831	52840	MIDWEST TAPE EXCHANGE	10100609-434600	GENERAL MATERIALS	22.49
	94412829	52841	MIDWEST TAPE EXCHANGE	10100609-434600	GENERAL MATERIALS	44.98

3258	94412828	52842	MIDWEST TAPE EXCHANGE	10100609-434600	GENERAL MATERIALS	22.49
	94412826	52843	MIDWEST TAPE EXCHANGE	10100609-434600	GENERAL MATERIALS	140.92
	94412825	52844	MIDWEST TAPE EXCHANGE	10100609-434600	GENERAL MATERIALS	11.24
	94384834	52833	MIDWEST TAPE EXCHANGE	10100609-434600	GENERAL MATERIALS	44.98
	94405825	52834	MIDWEST TAPE EXCHANGE	10100609-434600	GENERAL MATERIALS	14.99
	94384832	52835	MIDWEST TAPE EXCHANGE	10100609-434600	GENERAL MATERIALS	44.98
	94429362	52836	MIDWEST TAPE EXCHANGE	10100609-434600	GENERAL MATERIALS	22.49
	94429361	52837	MIDWEST TAPE EXCHANGE	10100609-434600	GENERAL MATERIALS	22.49
	94425624	52838	MIDWEST TAPE EXCHANGE	10100609-434600	GENERAL MATERIALS	146.15
	94391629	52827	MIDWEST TAPE EXCHANGE	10100609-434600	GENERAL MATERIALS	134.94
	94391631	52828	MIDWEST TAPE EXCHANGE	10100609-434600	GENERAL MATERIALS	370.31
	94391630	52829	MIDWEST TAPE EXCHANGE	10100609-434600	GENERAL MATERIALS	22.49
	94391628	52830	MIDWEST TAPE EXCHANGE	10100609-434600	GENERAL MATERIALS	112.45
	94391626	52831	MIDWEST TAPE EXCHANGE	10100609-434600	GENERAL MATERIALS	22.48
	94384830	52832	MIDWEST TAPE EXCHANGE	10100609-434600	GENERAL MATERIALS	104.93
	94367593	52820	MIDWEST TAPE EXCHANGE	10100609-434600	GENERAL MATERIALS	22.49
	94367592	52821	MIDWEST TAPE EXCHANGE	10100609-434600	GENERAL MATERIALS	39.73
	94367591	52822	MIDWEST TAPE EXCHANGE	10100609-434600	GENERAL MATERIALS	183.66
	94367589	52823	MIDWEST TAPE EXCHANGE	10100609-434600	GENERAL MATERIALS	142.43
	94405824	52824	MIDWEST TAPE EXCHANGE	10100609-434600	GENERAL MATERIALS	59.97
	94405823	52825	MIDWEST TAPE EXCHANGE	10100609-434600	GENERAL MATERIALS	44.98
	94364295	51694	MIDWEST TAPE EXCHANGE	10100609-434600	GENERAL MATERIALS	116.19
	94364296	51695	MIDWEST TAPE EXCHANGE	10100609-434600	GENERAL MATERIALS	29.98
	94364293	51696	MIDWEST TAPE EXCHANGE	10100609-434600	GENERAL MATERIALS	44.98
	93940493	51705	MIDWEST TAPE EXCHANGE	10100609-434600	GENERAL MATERIALS	11.24
	94367595	52818	MIDWEST TAPE EXCHANGE	10100609-434600	GENERAL MATERIALS	11.24
	94367594	52819	MIDWEST TAPE EXCHANGE	10100609-434600	GENERAL MATERIALS	44.98
						MIDWEST TAPE EXCHANGE Total:
3556	0000488735	52239	OCLC NET LIBRARY	10100610-425900	SUPPORT SERVICES	3,190.39
					OCLC NET LIBRARY Total:	3,190.39

3617	H-0034207	52787	OVERDRIVE INC	10100609-429300	GENERAL MATERIALS	3,000.00
	H-0037716	52908	OVERDRIVE INC	10100609-429300	GENERAL MATERIALS	3,000.00
	136800005898 0050315	7855	OVERDRIVE INC	10100609-434500	GENERAL MATERIALS	29.99
	136813142846 0052015	10871	OVERDRIVE INC	10100609-434500	GENERAL MATERIALS	19.99
	136814374277 0080515	15865	OVERDRIVE INC	10100609-434500	GENERAL MATERIALS	673.48
	136811451226 3082115	16384	OVERDRIVE INC	10100609-434500	GENERAL MATERIALS	195.84
	136810011670 7092115	18997	OVERDRIVE INC	10100609-434500	GENERAL MATERIALS	5.99
	136818175871 3102016	52635	OVERDRIVE INC	10100609-434500	GENERAL MATERIALS	737.85
	136811304353 0102516	52985	OVERDRIVE INC	10100609-434500	GENERAL MATERIALS	2.97
	136800041450 7102516	52969	OVERDRIVE INC	10100609-434500	GENERAL MATERIALS	195.00
	136800041252 7101116	52970	OVERDRIVE INC	10100609-434500	GENERAL MATERIALS	95.00
	136800041225 3101116	52971	OVERDRIVE INC	10100609-434500	GENERAL MATERIALS	24.99
	136800040588 3101816	52973	OVERDRIVE INC	10100609-434500	GENERAL MATERIALS	284.99
	136819242025 0100216	52974	OVERDRIVE INC	10100609-434500	GENERAL MATERIALS	48.00
	136811403789 3102516	52984	OVERDRIVE INC	10100609-434500	GENERAL MATERIALS	161.92
	136800041269 7101116	52947	OVERDRIVE INC	10100609-434500	GENERAL MATERIALS	135.97
	136816211118 3100116	52951	OVERDRIVE INC	10100609-434500	GENERAL MATERIALS	279.71
	136800011908 3101016	52952	OVERDRIVE INC	10100609-434500	GENERAL MATERIALS	131.99
	136800041468 3102516	52966	OVERDRIVE INC	10100609-434500	GENERAL MATERIALS	160.00
136800051911 0100416	52967	OVERDRIVE INC	10100609-434500	GENERAL MATERIALS	89.95	

3617	136800041313 3101116	52968	OVERDRIVE INC	10100609-434500	GENERAL MATERIALS	394.98
	136811385838 7080916	52762	OVERDRIVE INC	10100609-434500	GENERAL MATERIALS	884.36
	136811413942 3080916	52763	OVERDRIVE INC	10100609-434500	GENERAL MATERIALS	1,008.78
	136800025992 7080916	52768	OVERDRIVE INC	10100609-434500	GENERAL MATERIALS	38.00
	136800025922 3080916	52774	OVERDRIVE INC	10100609-434500	GENERAL MATERIALS	375.78
	136800051963 7100416	52945	OVERDRIVE INC	10100609-434500	GENERAL MATERIALS	271.99
	136800041297 0101116	52946	OVERDRIVE INC	10100609-434500	GENERAL MATERIALS	17.99
	136800013039 3062716	52639	OVERDRIVE INC	10100609-434500	GENERAL MATERIALS	47.99
	136800013047 0062716	52640	OVERDRIVE INC	10100609-434500	GENERAL MATERIALS	95.98
	136815994646 7110215	52643	OVERDRIVE INC	10100609-434500	GENERAL MATERIALS	50.99
	136818553610 3080516	52752	OVERDRIVE INC	10100609-434500	GENERAL MATERIALS	276.83
	136818563512 3080816	52753	OVERDRIVE INC	10100609-434500	GENERAL MATERIALS	457.70
	136800030009 7080916	52757	OVERDRIVE INC	10100609-434500	GENERAL MATERIALS	16.99
	136817264035 0110915	24083	OVERDRIVE INC	10100610-434500	GENERAL MATERIALS	19.98
	136815494646 7110215	24084	OVERDRIVE INC	10100610-434500	GENERAL MATERIALS	50.99
	136813541257 7111915	24086	OVERDRIVE INC	10100610-434500	GENERAL MATERIALS	320.62
	136800020243 0032216	35893	OVERDRIVE INC	10100610-434500	GENERAL MATERIALS	53.97
	136800022698 7082316	50297	OVERDRIVE INC	10100610-434500	GENERAL MATERIALS	65.00
	136800040144 3092016	51675	OVERDRIVE INC	10100610-434500	GENERAL MATERIALS	146.00

3617	136800011017 0102016	52633	OVERDRIVE INC	10100610-434500	GENERAL MATERIALS	13.99
	136800005882 0091716	51682	OVERDRIVE INC	10100610-434500	GENERAL MATERIALS	7.62
	136800005594 0092416	51683	OVERDRIVE INC	10100610-434500	GENERAL MATERIALS	17.99
	136812221549 0091916	51684	OVERDRIVE INC	10100610-434500	GENERAL MATERIALS	72.94
	136800005547 3062016	52619	OVERDRIVE INC	10100610-434500	GENERAL MATERIALS	29.99
	136818274111 0102016	52630	OVERDRIVE INC	10100610-434500	GENERAL MATERIALS	1,485.94
	136800005891 3042516	52631	OVERDRIVE INC	10100610-434500	GENERAL MATERIALS	45.95
	136800040125 0092016	51676	OVERDRIVE INC	10100610-434500	GENERAL MATERIALS	14.99
	136800040095 7092016	51677	OVERDRIVE INC	10100610-434500	GENERAL MATEIRALS	66.50
	136800040068 3092016	51678	OVERDRIVE INC	10100610-434500	GENERAL MATERIALS	195.00
	136800035237 3092716	51679	OVERDRIVE INC	10100610-434500	GENERAL MATERIALS	113.97
	136800035259 7092716	51680	OVERDRIVE INC	10100610-434500	GENERAL MATERIALS	15.12
136800012216 3092616	51681	OVERDRIVE INC	10100610-434500	GENERAL MATERIALS	84.00	
				OVERDRIVE INC Total:	16,032.55	
3660	22303	52911	PARKWAY CAR WASH INC	10100609-425100	MAINTENANCE/FACILITIES	8.50
					PARKWAY CAR WASH INC Total:	8.50
1414	09/21/16	52910	PEGIE DOUGLAS	10100609-422500	PROGRAMMING-ADULT	400.00
	10/03/16	53051	PEGIE DOUGLAS	10100609-422500	PROGRAMMING-ADULT	250.00
					PEGIE DOUGLAS Total:	650.00
7323	7772144	50985	PROVANTAGE LLC	10100609-429500	COMPUTERS/SOFTWARE	382.00
	7775527	50986	PROVANTAGE LLC	10100609-429500	COMPUTERS/SOFTWARE	301.50
					PROVANTAGE LLC Total:	683.50

3845	9/05/16	50211	RAPID CITY AREA CHAMBER OF COMMERCE	10100609-427000	PROGRAMMING	15.00
					RAPID CITY AREA CHAMBER OF COMMERCE Total:	15.00
3848	3600050373	50212	RAPID CITY AREA SCHOOL DIST 51-4	10100609-422500	PROFESSIONAL SERVICES-MAINTENA	4,319.26
	3600050373	50212	RAPID CITY AREA SCHOOL DIST 51-4	10100609-428300	PROFESSIONAL SERVICES-MAINTENA	2,468.74
					RAPID CITY AREA SCHOOL DIST 51-4 Total:	6,788.00
3863	73759	52240	RAPID CITY JOURNAL - ADVERTISING	10100609-429300	GENERAL MATERIALS	40.06
					RAPID CITY JOURNAL - ADVERTISING Total:	40.06
3873	M88 159231	50135	RAPID CITY REGIONAL HOSPITAL	10100609-426400	MAINTENANCE/FACILITIES	16.50
	M88 160942	52462	RAPID CITY REGIONAL HOSPITAL	10100610-426400	MAINTENANCE/FACILITIES	15.51
					RAPID CITY REGIONAL HOSPITAL Total:	32.01
8048	06/29/16	42153	RUSHMORE HOTEL & SUITES	10100609-422500	TRAVEL/TRAINING	139.00
					RUSHMORE HOTEL & SUITES Total:	139.00
4182	003756	53045	SAM'S CLUB	10100610-429400	PROGRAMMING-YOUTH	188.55
					SAM'S CLUB Total:	188.55
3286	06/22/16-06/28/16	44835	SEAN MINKEL	10100609-427000	TRAVEL/TRAINING	54.00
	06/22/16-06/28/16	44835	SEAN MINKEL	10100610-427000	TRAVEL/TRAINING	246.00
					SEAN MINKEL Total:	300.00
4330	2492127	52781	SERVALL UNIFORM/LINEN CO INC	10100610-426400	MAINTENANCE/FACILITIES	71.99
	2498253	52786	SERVALL UNIFORM/LINEN CO INC	10100610-426400	MAINTENANCE/FACILITIES	95.78
					SERVALL UNIFORM/LINEN CO INC Total:	167.77

4536	6031	53014	SOUTH DAKOTA STATE ARCHIVES	10100609-434100	GENERAL MATERIALS	28.80
					SOUTH DAKOTA STATE ARCHIVES Total:	28.80
8525	6022	52233	SOUTH DAKOTA STATE HISTORICAL SOCIETY	10100609-434100	GENERAL MATERIALS	86.40
					SOUTH DAKOTA STATE HISTORICAL SOCIETY Total:	86.40
7428	732693	52600	SPARTAN STORES LLC	10100610-429400	PROGRAMMING-TEEN	11.97
	644471	52605	SPARTAN STORES LLC	10100610-429400	PROGRAMMING-TEEN	3.58
					SPARTAN STORES LLC Total:	15.55
4845	014374	51823	TIME EQUIP. RENTAL & SALES INC.	10100609-422500	MAINTENANCE/FACILITIES	525.00
	014239	52611	TIME EQUIP. RENTAL & SALES INC.	10100609-424600	MAINTENANCE/FACILITIES	56.32
	014374	51823	TIME EQUIP. RENTAL & SALES INC.	10100609-425300	MAINTENANCE/FACILITIES	4,784.00
					TIME EQUIP. RENTAL & SALES INC. Total:	5,365.32
4944	40091	49991	TWILIGHT FIRST AID & SAFETY SUPPLY	10100610-426100	SUPPLIES	128.76
					TWILIGHT FIRST AID & SAFETY SUPPLY Total:	128.76
5118	002442 09/15/16	49726	WALMART COMMUNITY	10100610-429400	PROGRAMMING-YOUTH	4.41
	007338	52784	WALMART COMMUNITY	10100610-429400	PROGRAMMING-TEEN	182.06
					WALMART COMMUNITY Total:	186.47
5220	682719-0	52601	WESTERN STATIONERS	10100609-426100	SUPPLIES	416.76
	682719-1	52601	WESTERN STATIONERS	10100609-426100	SUPPLIES	138.92
	683565-1	52903	WESTERN STATIONERS	10100609-434200	GENERAL MATERIALS	182.40
	682391-0	50179	WESTERN STATIONERS	10100610-426100	SUPPLIES	58.40
	683233-0	52234	WESTERN STATIONERS	10100610-426100	SUPPLIES	97.84
	683432-0	52238	WESTERN STATIONERS	10100610-426100	SUPPLIES	22.65
	683817-1	52241	WESTERN STATIONERS	10100610-426100	SUPPLIES	101.25

5220	683817-0	52241	WESTERN STATIONERS	10100610-426100	SUPPLIES	11.25
	682762-0	52604	WESTERN STATIONERS	10100610-426100	SUPPLIES	4.99
	683565-0	52242	WESTERN STATIONERS	10100610-434200	GENERAL MATERIALS	267.58
					WESTERN STATIONERS Total:	1,302.04
Total					Grand Total:	62,849.69