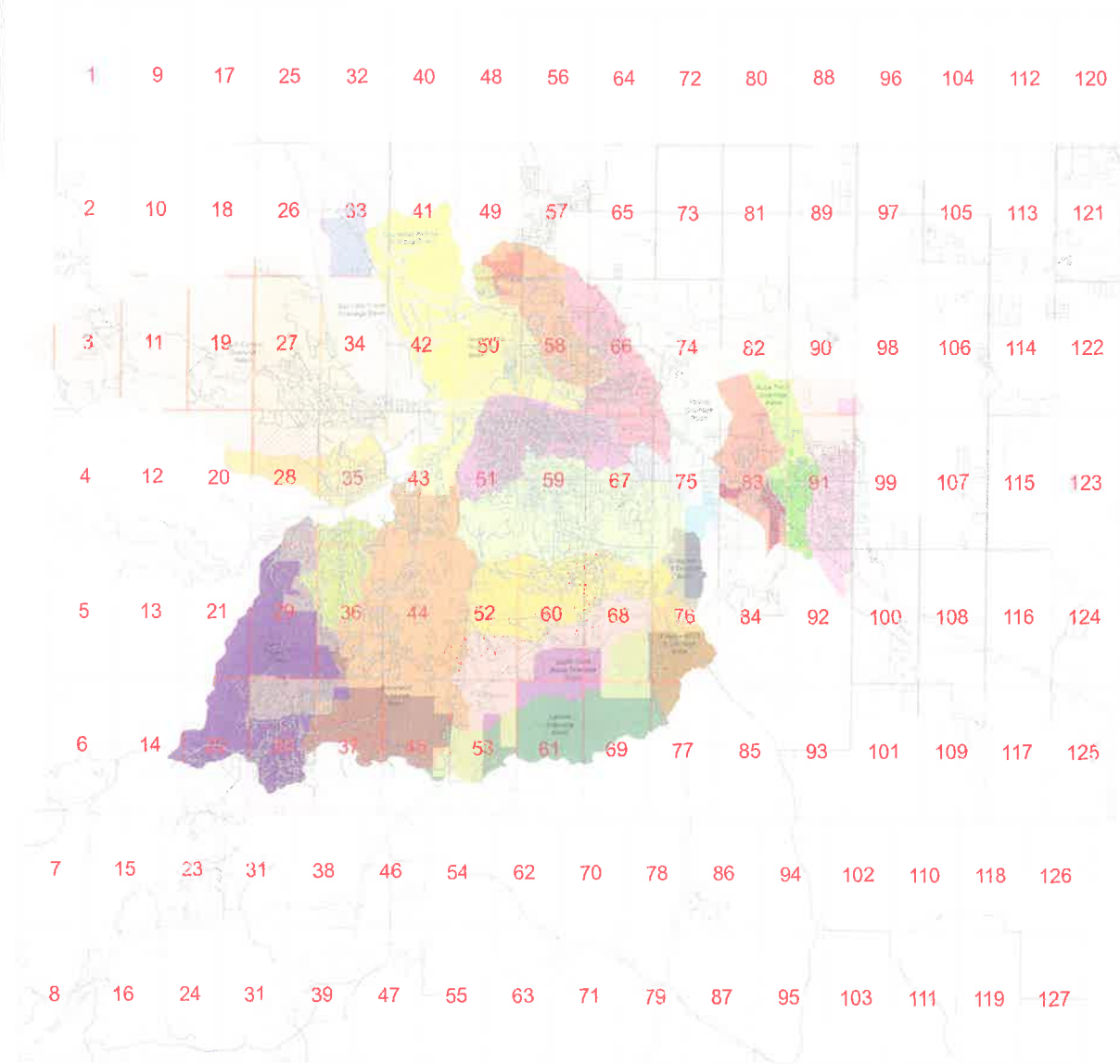


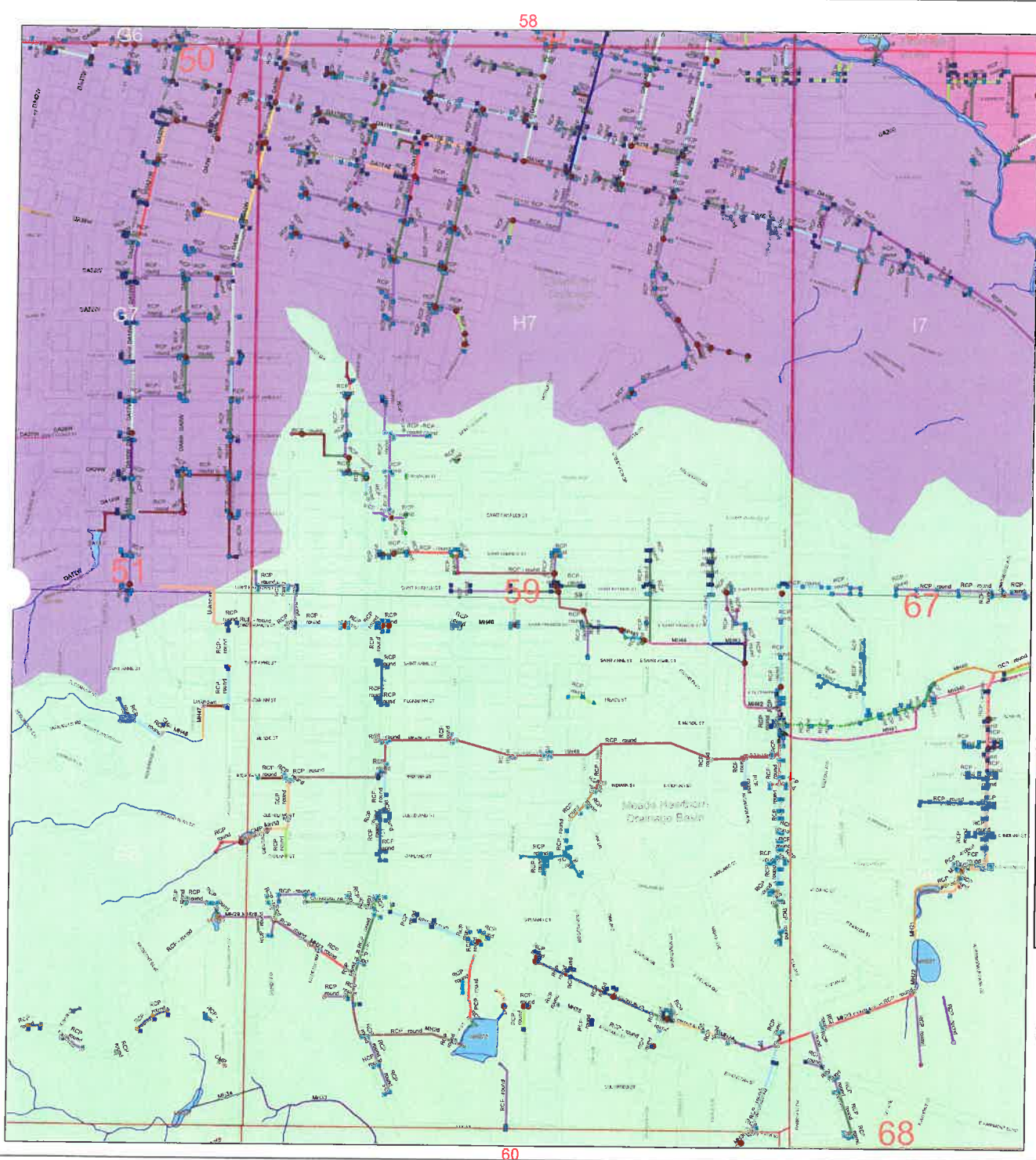


CITY OF RAPID CITY
Stormwater Management Plan

APPENDIX G
EXAMPLE STORM SEWER SYSTEM
MAPS

Storm Water System 2014





Legend

- ▲ Flow End Section
- ARBA
- G
- E10
- E5
- S
- Junction Boxes
- Manholes

Channel type

- ▬ Box culvert
- ▬ Double box culvert
- ▬ Cass
- ▬ Open trench and trapezoidal
- ▬ Open concrete
- ▬ Unknown

Pipe size

- 8
- 10
- 12
- 14
- 16
- 18
- 20
- 22
- 24
- 26
- 27
- 30
- 32
- 33
- 36
- 40
- 42
- 44
- 46
- 48
- 50
- 54
- 60
- 66
- 72
- 78
- 84
- 90
- 96
- 102
- 108
- 114
- 120
- 126
- 132
- 138
- 144
- 150
- 156
- 162
- 168
- 174
- 180
- 186
- 192
- 198
- 204
- 210
- 216
- 222
- 228
- 234
- 240

○ Pipe Dates

- ▬ Channel
- ▬ Pipe
- ▬ Other

Drainage Basins

- ▬ Existing Linear Plans Basins
- ▬ Ardenwood Drainage Basin
- ▬ County Ridge Drainage Basin
- ▬ Davidson Avenue Drainage Basin
- ▬ Downtown Drainage Basin
- ▬ Hayes Avenue Drainage Basin
- ▬ Jackson Boulevard
- ▬ Knoxwood Drainage Basin
- ▬ Landis Drainage Basin
- ▬ Meade Heights Drainage Basin
- ▬ Menards Drainage Basin
- ▬ Old Line Creek Drainage Basin
- ▬ Platte Drainage Basin
- ▬ Park Drive Drainage Basin
- ▬ Park Ridge Drainage Basin
- ▬ Red Rock Drainage Basin
- ▬ S Highway 73 Drainage Basin
- ▬ S Highway 78 Drainage Basin
- ▬ S Highway 79 Drainage Basin
- ▬ South Canyon Drainage Basin
- ▬ South Redwood Drainage Basin
- ▬ South Truck Drainage Basin
- ▬ Unimproved Tributary Drainage Basin
- ▬ Wardsland Drive Drainage Basin

▬ City Grid

▬ Road Grid

▬ ROW

N

0 250 500 1000 Feet

Storm Water System 2014

Title: 59

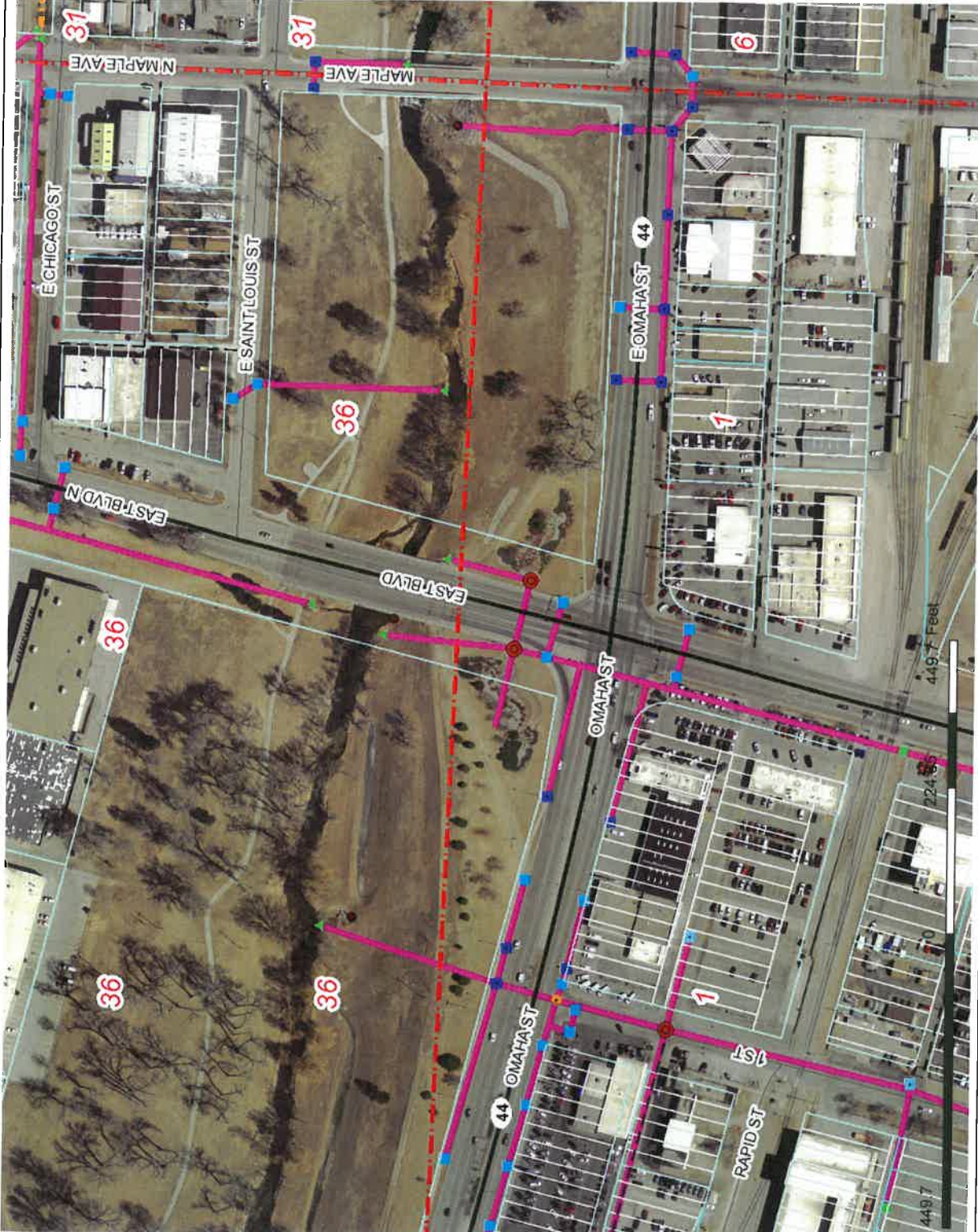
Legend

- Roads**
- Interstate
 - US Highway
 - SD Highway
 - County Highway
 - Main road
 - Minor arterial
 - Collector
 - Ramp
 - Paved road
 - Unpaved road
 - FS Highway
 - Driveway
 - Paved Alley
 - Unpaved Alley
 - Unimproved road
 - Trail
 - Airport Runway
 - Not yet coded
 - Township/Section Lines
 - 0
 - 7
- Tax Parcels**
- Squid
 - Lot Line
 - Parcel Line
 - County Line
 - Storm Drain Manholes
 - Storm Drain Junction Boxes
 - Storm Drain Inlets
 - AREA
 - B
 - C
 - E10
 - E5
 - S
 - Unknown
- Storm Drain Edge Drains**
- Storm Drain FES
 - Storm Drain Flap Gates
 - Storm Drain Channels
 - Box culvert
 - Double box culvert
 - Grass
 - Grass and triple pan
 - Open concrete
 - Unknown
- Storm Drain Pipes**
- <all other values>
 - CMIP
 - PVC
 - RCP - arched
 - RCP - round
 - Unknown



Scale: 1:2,698

Map Notes:



DISCLAIMER: This map is provided "as is" without warranty of any representation to accuracy, timeliness, or completeness. The burden for determining accuracy, completeness, timeliness, merchantability, and fitness for or the appropriateness for use rests solely on the user. Rapid City and Pennington County make no warranty, express or implied, as to the use of the map. There are no implied warranties of merchantability or fitness for a particular purpose. The user acknowledges and accepts the limitations of the map, including the fact that the data used to create the map is derived from inconsistent state of maintenance, correction, and update. This document does not represent a legal survey of the land. There are no restrictions on the distribution of printed Rapid City/Pennington County maps, other than the City of Rapid City copyright notice. The user agrees to recognize and honor in perpetuity the copyrights and other proprietary claims for the map(s) established or produced by the City of Rapid City or the vendors furnishing said items to the City of Rapid City.