



CITY OF RAPID CITY
Stormwater Management Plan

APPENDIX F
BUILDING PERMIT INSERT

Erosion and Sediment Control for Building Sites



What is Erosion and Sediment Control?

Erosion and sediment control practices are used to prevent runoff from occurring at construction sites with disturbed soils. These practices may include silt fencing, wattles, and erosion mats and are often referred to as Best Management Practices or BMPs. Pollutants that can leave a construction site include sediment, sanitary waste, debris, oil and grease, chemicals, and concrete wash water. Implementation of BMPs at construction sites can significantly reduce runoff from occurring. Sediment is the largest source of pollution from construction sites.

Why is Erosion and Sediment Control Important?

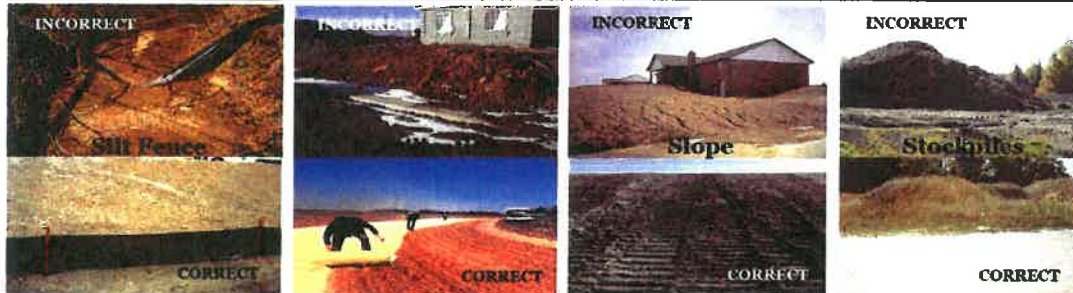
Construction activities without proper erosion and sediment controls can contribute large amounts of sediment and pollutants to streams, creeks, rivers and lakes. Sediment can cloud the water and make it difficult or impossible for aquatic plants to grow. It can also destroy aquatic habitats. In addition, the U.S. Environmental Protection Agency makes it illegal to discharge sediment-laden water and/or construction-related pollutants to storm sewers or waterways. By keeping sediment and other pollutants out of streams, creeks, and rivers, you can maintain water quality for drinking, recreation, wildlife, and aquatic life.



According to the Environmental Protection Agency, polluted runoff is the nation's greatest threat to clean water.

For more information, contact the Pennington County Planning Department at (605) 394-2186.

Common Erosion Control Measures



Soil Erosion and Sediment Control Tips:

- Design site to infiltrate stormwater into the ground and keep out of storm drains and drainage ways.
- Minimize the amount of exposed soil on the site.
- Reduce the velocity of stormwater both onto and away from project area.
- Protect defined channels immediately with measures adequate to handle the storm flows expected.
- Keep sediment on site.
- Maintain all BMPs to ensure their effectiveness throughout the life of the project.

Information provided by the Environmental Protection Agency, EPA 833-H-03-001-April 2003, EPA 833-B-03-002-January 2003 and the Minnesota Pollution Control Agency