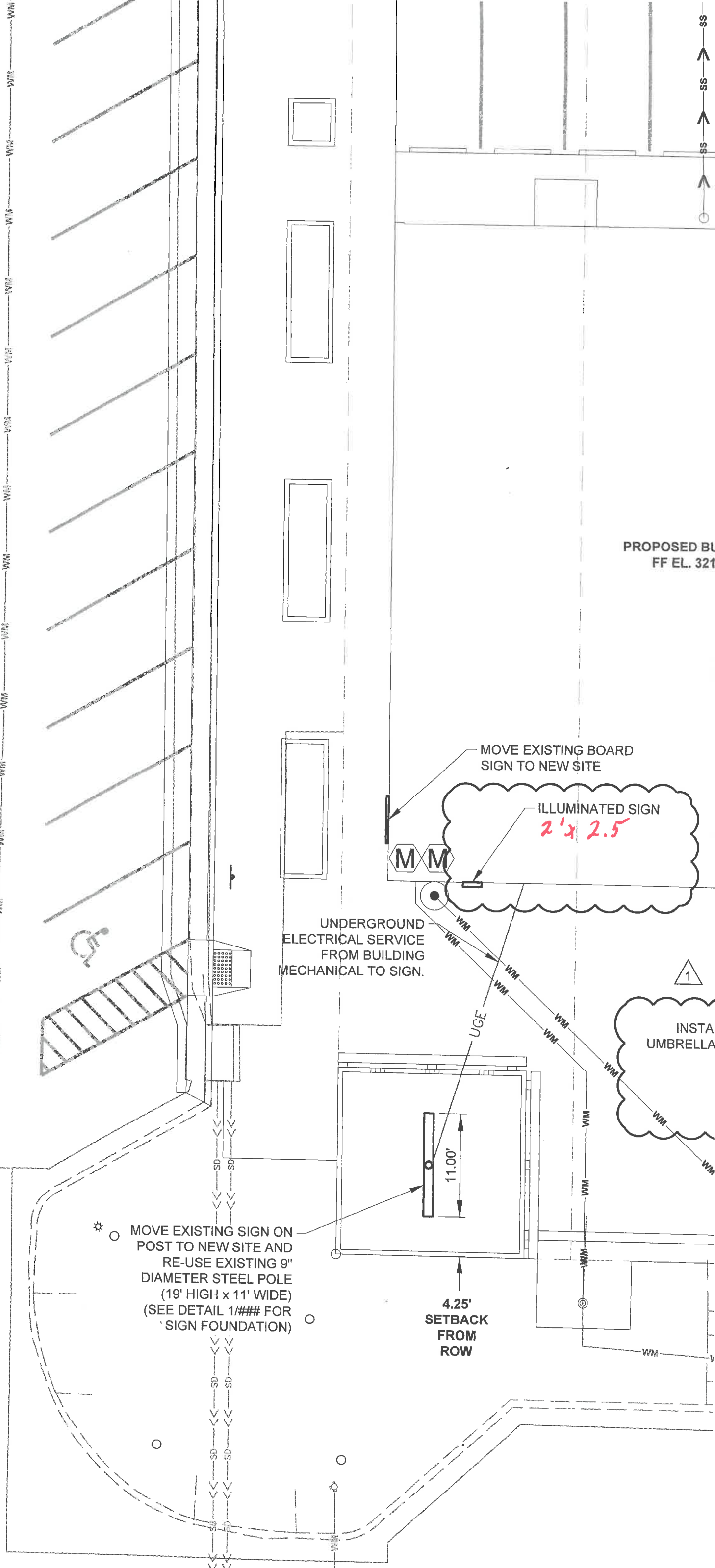


CTURAL  
N

C

6" PVC WATER



PROPOSED BL  
FF EL. 321

MOVE EXISTING BOARD  
SIGN TO NEW SITE

ILLUMINATED SIGN  
*2' x 2.5'*

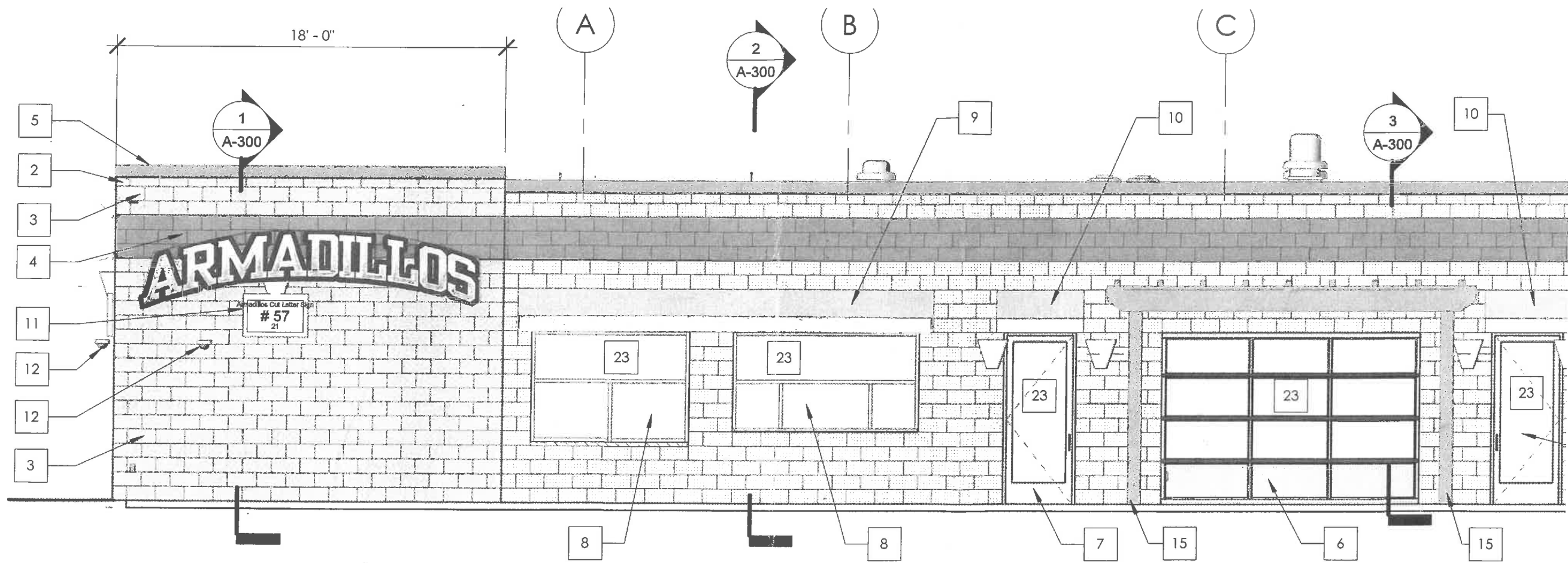
UNDERGROUND  
ELECTRICAL SERVICE  
FROM BUILDING  
MECHANICAL TO SIGN.

INSTA  
UMBRELLA

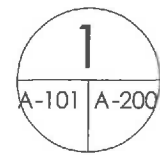
MOVE EXISTING SIGN ON  
POST TO NEW SITE AND  
RE-USE EXISTING 9"  
DIAMETER STEEL POLE  
(19' HIGH x 11' WIDE)  
(SEE DETAIL 1/### FOR  
SIGN FOUNDATION)

4.25'  
SETBACK  
FROM  
ROW

1

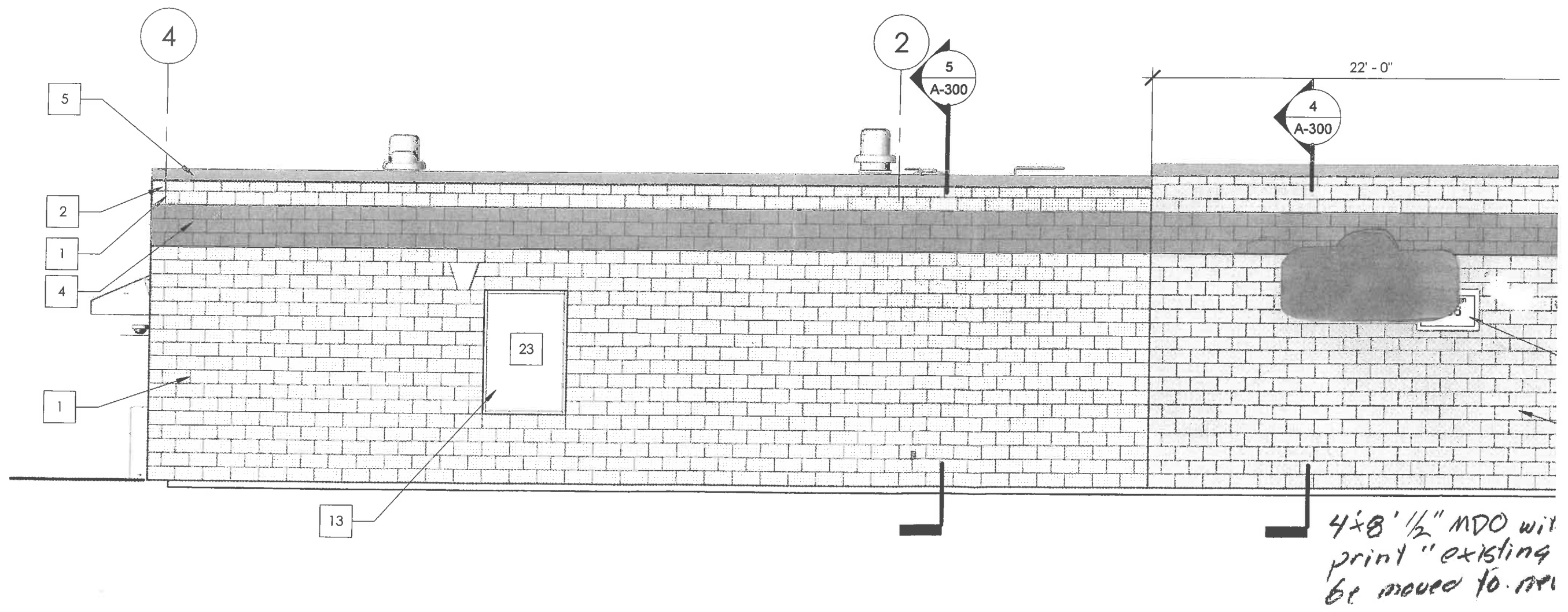


24" x 16" 1/2" Medex panel painted black.  
 "cut out as outline around copy"  
 18" Letters 1/2" Medex white with  
 centers of letters painted with  
 blend, Grey PMS 423 to white  
 Font to be "Full Block"  
 "Sample to be provided"



## EXTERIOR ELEVATION - SOUTH

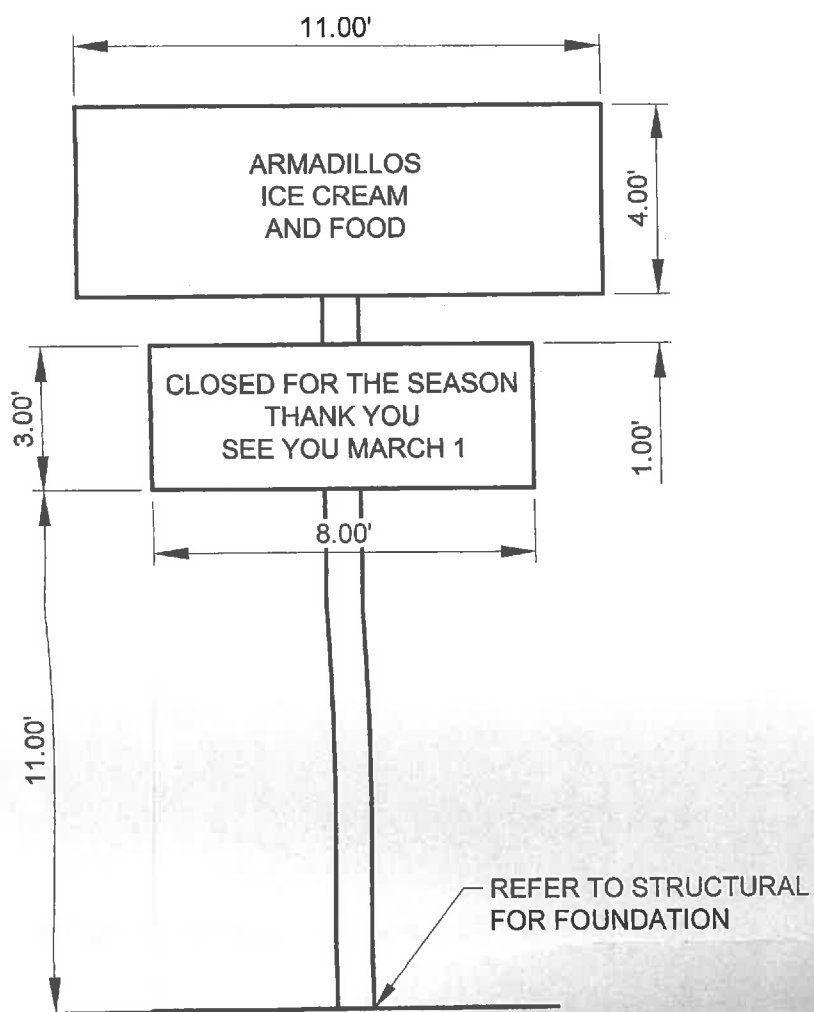
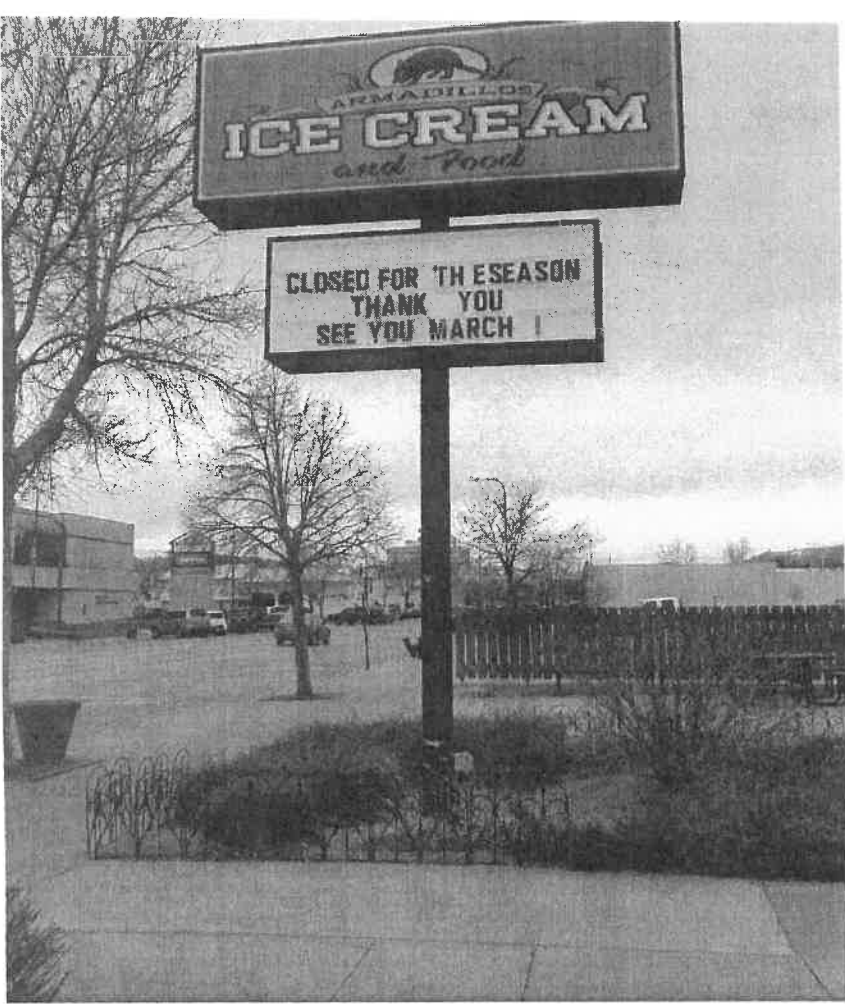
3/16" = 1'-0"



2  
A-101 | A-200

EXTERIOR ELEVATION - WEST

3/16" = 1'-0"



**2** **SIGN ON POST**  
**C5** NOT TO SCALE

