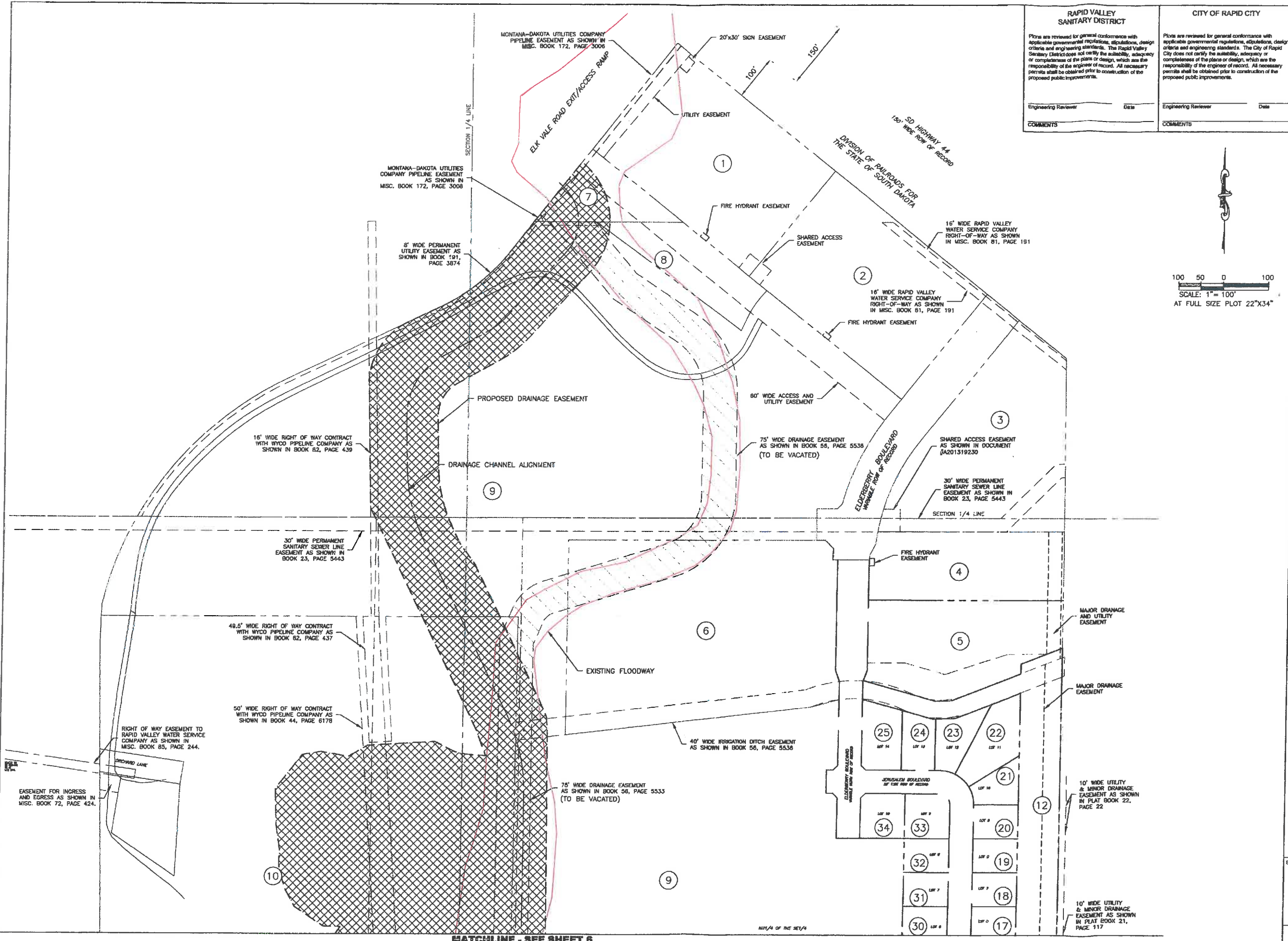
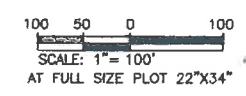


K:\BEO-690\654 Welly Byam Property\Drawings\CHANNEL 2015-07-01\08 -dwg 10/16/2015 8:30am



RAPID VALLEY SANITARY DISTRICT Plans are reviewed for general conformance with applicable governmental regulations, subdivisions, design criteria and engineering standards. The Rapid Valley Sanitary District does not certify the suitability, adequacy or completeness of the plans or design, which are the responsibility of the engineer of record. All necessary permits shall be obtained prior to construction of the proposed public improvements.		CITY OF RAPID CITY Plans are reviewed for general conformance with applicable governmental regulations, subdivisions, design criteria and engineering standards. The City of Rapid City does not certify the suitability, adequacy or completeness of the plans or design, which are the responsibility of the engineer of record. All necessary permits shall be obtained prior to construction of the proposed public improvements.	
Engineering Reviewer	Date	Engineering Reviewer	Date
COMMENTS		COMMENTS	

Submitted:	2015/08/10 PRELIM ENGINEERING PLANS
2015/10/16 ENGINEERING PLANS	
Revisits:	
Internal Job No:	12-06E4
Designed By:	MT
Drawn By:	CM
Surveyed By:	RENNER & ASSOC
Survey Date:	07/11/2013



DREAM DESIGN INTERNATIONAL, INC.
 ENGINEERING, LANDSCAPE ARCHITECTURE, LAND PLANNING, CONSTRUCTION ADMINISTRATION
 528 KANSAS CITY STREET, SUITE 4, RAPID CITY, SD 57701
 PHONE: (605) 348-0538 FAX: (605) 348-0545 WWW.DREAMDESIGNING.COM

UNNAMED TRIBUTARY - ELEMENT 8
 DRAINAGE CHANNEL IMPROVEMENTS

RAPID VALLEY SANITARY DISTRICT

Plans are reviewed for general conformance with applicable governmental regulations, stipulations, design criteria and engineering standards. The Rapid Valley Sanitary District does not certify the suitability, adequacy or completeness of the plans or design, which are the responsibility of the engineer of record. All necessary permits shall be obtained prior to construction of the proposed public improvements.

Engineering Reviewer _____ Date _____

COMMENTS _____

CITY OF RAPID CITY

Plans are reviewed for general conformance with applicable governmental regulations, stipulations, design criteria and engineering standards. The City of Rapid City does not certify the suitability, adequacy or completeness of the plans or design, which are the responsibility of the engineer of record. All necessary permits shall be obtained prior to construction of the proposed public improvements.

Engineering Reviewer _____ Date _____

COMMENTS _____

Submittal:
2015/08/10: PRELIM. ENGINEERING PLANS
2015/10/16: ENGINEERING PLANS

Revisions:

Internal Job No: 12-0854
Designed By: MT
Drawn By: CM
Surveyed By: RENNER & ASSOC
Survey Date: 07/11/2013

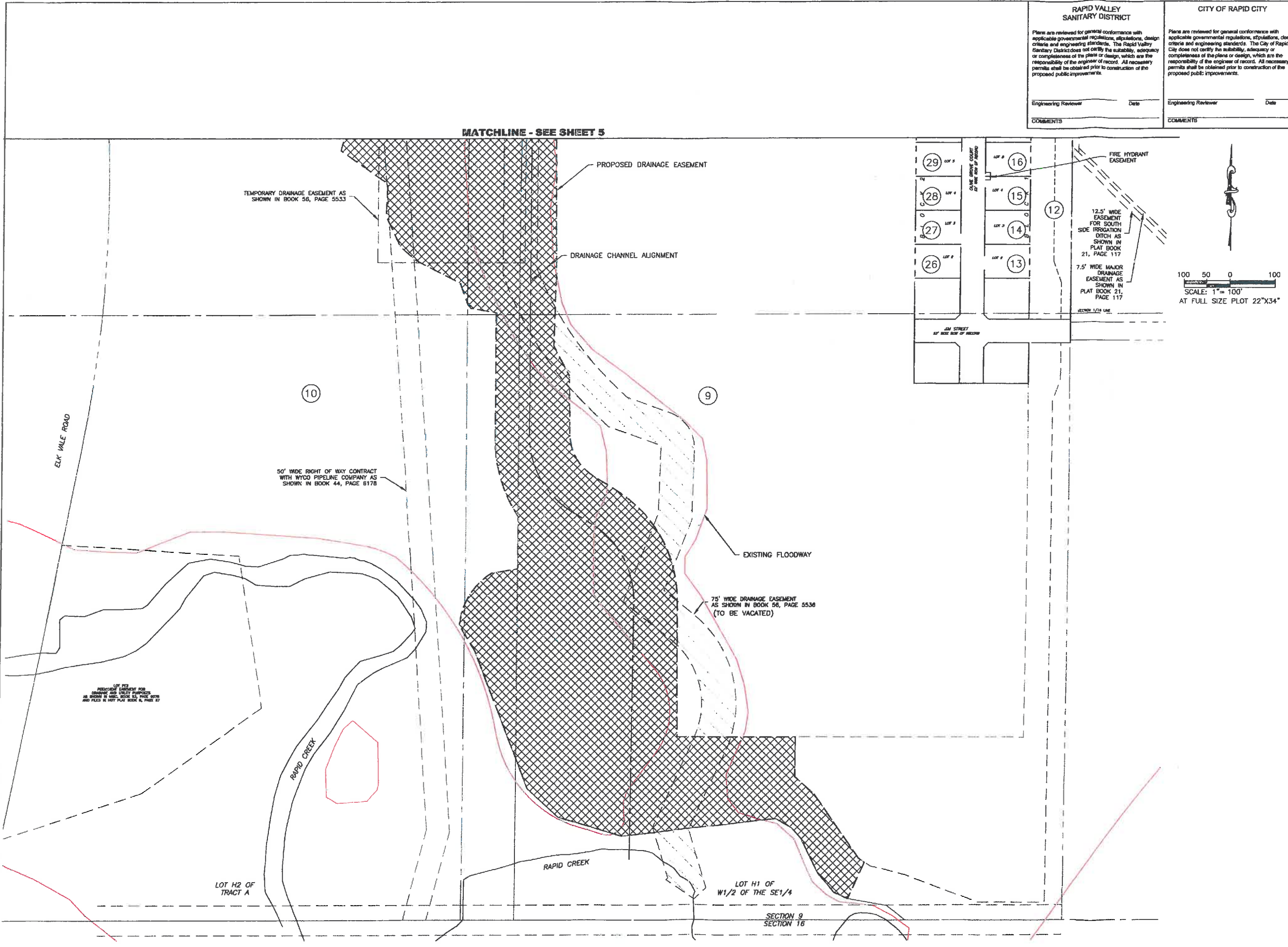


DREAM DESIGN INTERNATIONAL, INC.
ENGINEERING, LANDSCAPE ARCHITECTURE,
LAND PLANNING, CONSTRUCTION ADMINISTRATION
528 KANSAS CITY STREET, SUITE 4, RAPID CITY, SD 57701
PHONE: (605) 348-0538 FAX: (605) 348-0545 WWW.DREAMDESIGNINC.COM

UNNAMED TRIBUTARY - ELEMENT 8
DRAINAGE CHANNEL IMPROVEMENTS

Sheet Name:
PROPERTY LAYOUT AND OWNERSHIP, EASEMENT LAYOUT - SOUTH

Sheet Number:
of 29



X:\650-689\654 - Wally Byam Property\Drawings\SHEETS\CHANNEL_2015-07-01\06 --.dwg 10/16/2015 8:30am