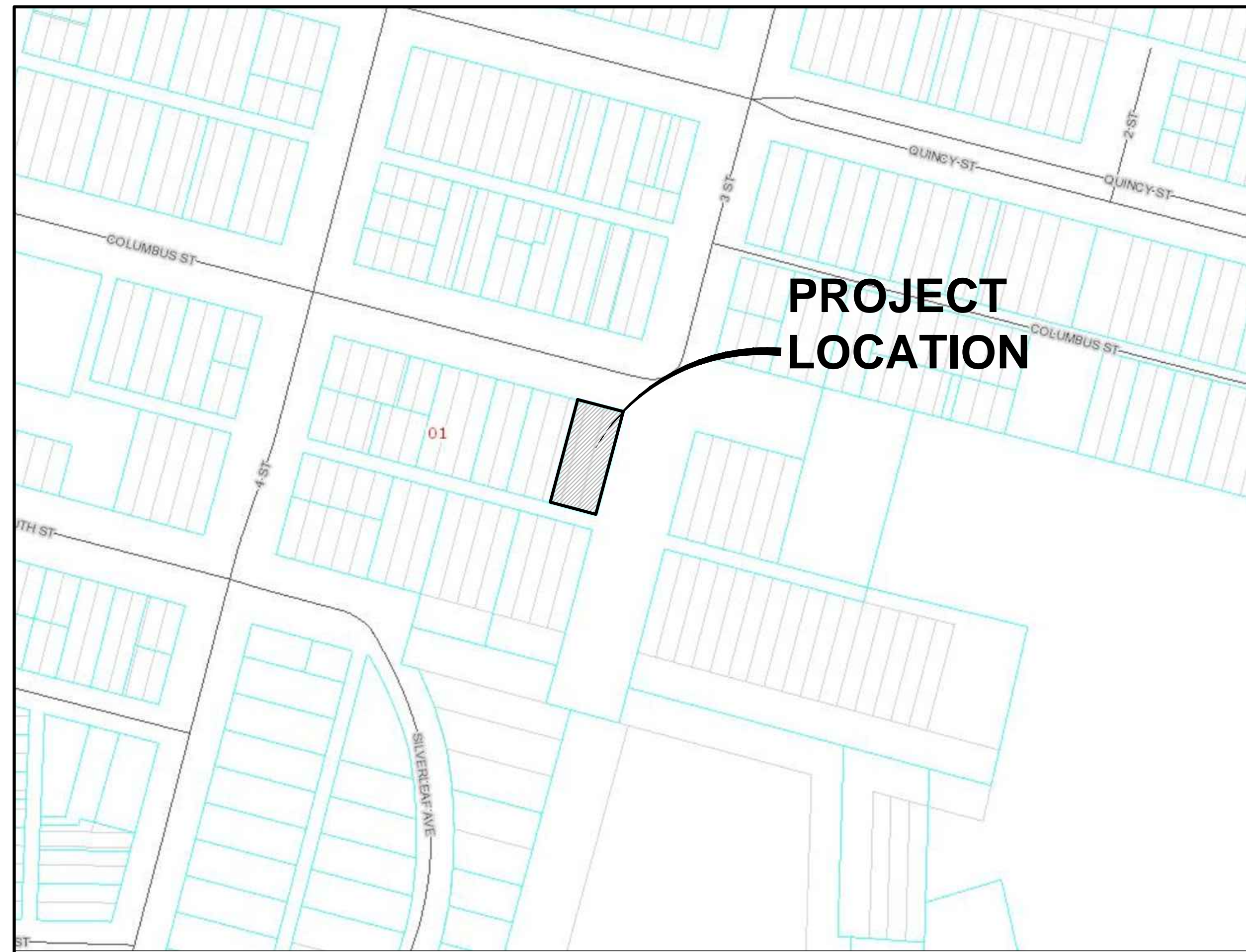


UTILITY IMPROVEMENTS

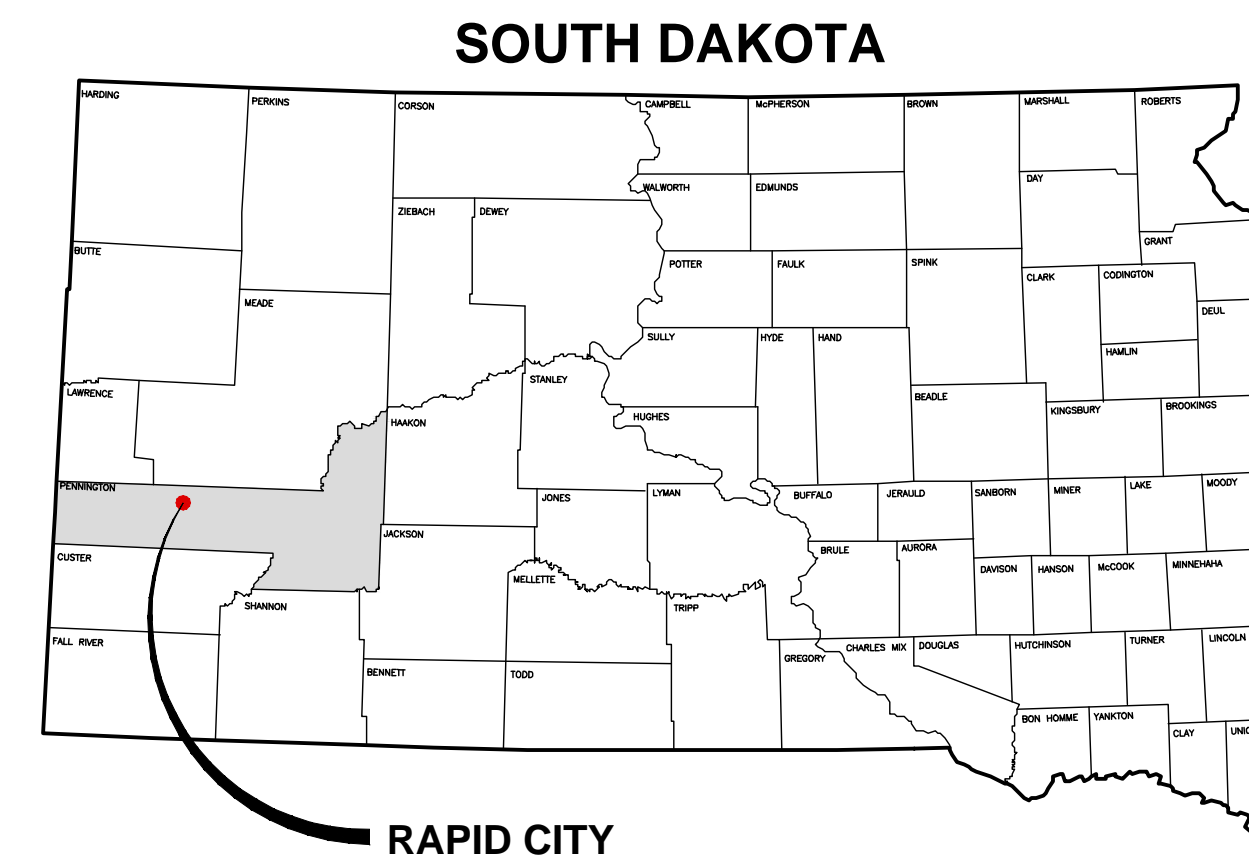
LOTS 1, 2 AND E1/2 OF LOT 3 BLOCK 127, ORIGINAL TOWN OF RAPID CITY



PROJECT LOCATION MAP NOT TO SCALE

INDEX OF SHEETS

- 1.1 COVER SHEET
- 1.2-1.3 GENERAL NOTES
- 2.1 TRAFFIC CONTROL
- 3.1 DETAILED TOPOGRAPHIC MAP / DEMOLITION PLAN
- 4.1 SURFACING PLAN
- 4.2 SANITARY SEWER PLAN/PROFILE
- 5.1 STANDARD DETAILS



I, Kale McNaboe, certify that I have read and understand the provisions contained in the City of Rapid City Standard Specifications for Public Works Construction, current edition and the City of Rapid City's adopted Design Criteria Manuals. The drawings and specifications contained here within, to the best of my knowledge, were prepared in accordance with these documents, or a properly executed Exception to the Design Standards has been obtained.

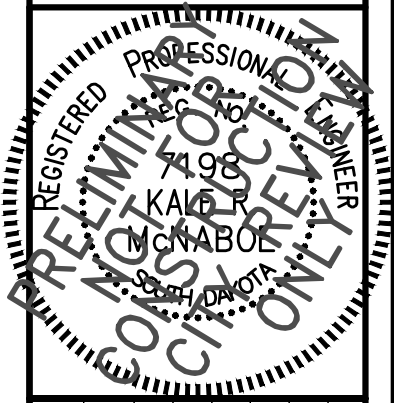
Kale McNaboe _____ Date: _____

ONE CALL
BEFORE DIGGING
1-800-781-7474

CITY OF RAPID CITY
Plans are reviewed for general conformance with applicable governmental regulations, design criteria and engineering standards. The City of Rapid City does not certify the suitability, adequacy or completeness of the plans or design, which are the responsibility of the engineer of record. All necessary permits shall be obtained prior to construction of the proposed public improvements.

Engineering Reviewer _____ Date _____
COMMENTS _____

1220 EAST MINNESOTA STREET
RAPID CITY, SD 57701
TEL: (605) 721-4040
EMAIL: info@longbrancheng.com



REVISIONS	DATE	REVISION

LEGAL DESCRIPTION:
LOTS 1, 2 AND E1/2 OF LOT 3 BLOCK 127
ORIGINAL TOWN OF RAPID CITY
SECTION 1, T1N, R7E, B14M
RAPID CITY, PENNINGTON COUNTY, SOUTH DAKOTA
SURVEYED BY: LCE
DRAWN BY: DMW

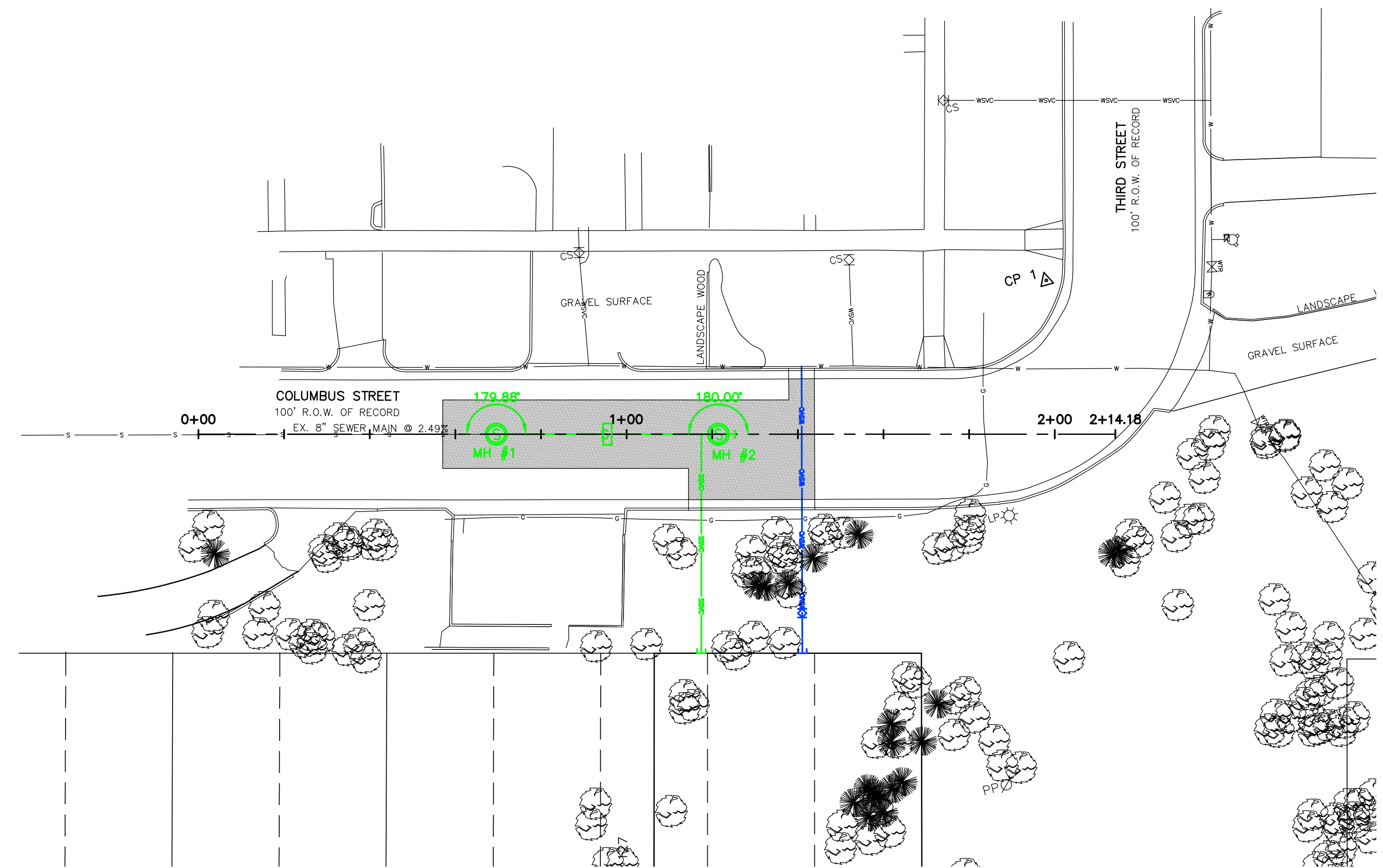
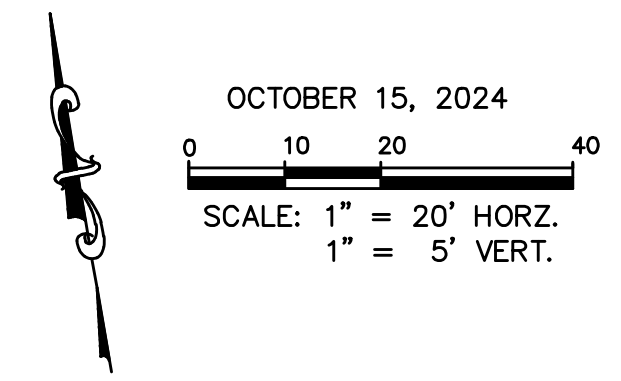
COVER SHEET
LOTS 1, 2 AND E1/2 OF LOT 3 OF BLOCK 127
ORIGINAL TOWN OF RAPID CITY

PROJECT NUMBER **3961**
SHEET **1.1**

UTILITIES

LOCATE UTILITIES: SOUTH DAKOTA ONE CALL
 P.O. BOX 187
 RAPID CITY, SD 57701
 (800) 781-7474

THE LOCATIONS OF EXISTING UNDERGROUND UTILITIES ARE SHOWN IN AN APPROXIMATE WAY ONLY AND HAVE NOT BEEN INDEPENDENTLY VERIFIED BY THE OWNERS OR THEIR REPRESENTATIVES. THE CONTRACTOR SHALL DETERMINE THE EXACT LOCATION OF ALL EXISTING UTILITIES BEFORE COMMENCING WORK, AND AGREES TO BE FULLY RESPONSIBLE FOR ANY AND ALL DAMAGES WHICH MIGHT BE OCCASIONED BY THE CONTRACTOR'S FAILURE TO EXACTLY LOCATE AND PRESERVE ANY AND ALL UNDERGROUND UTILITIES.



SANITARY SEWER NOTES:

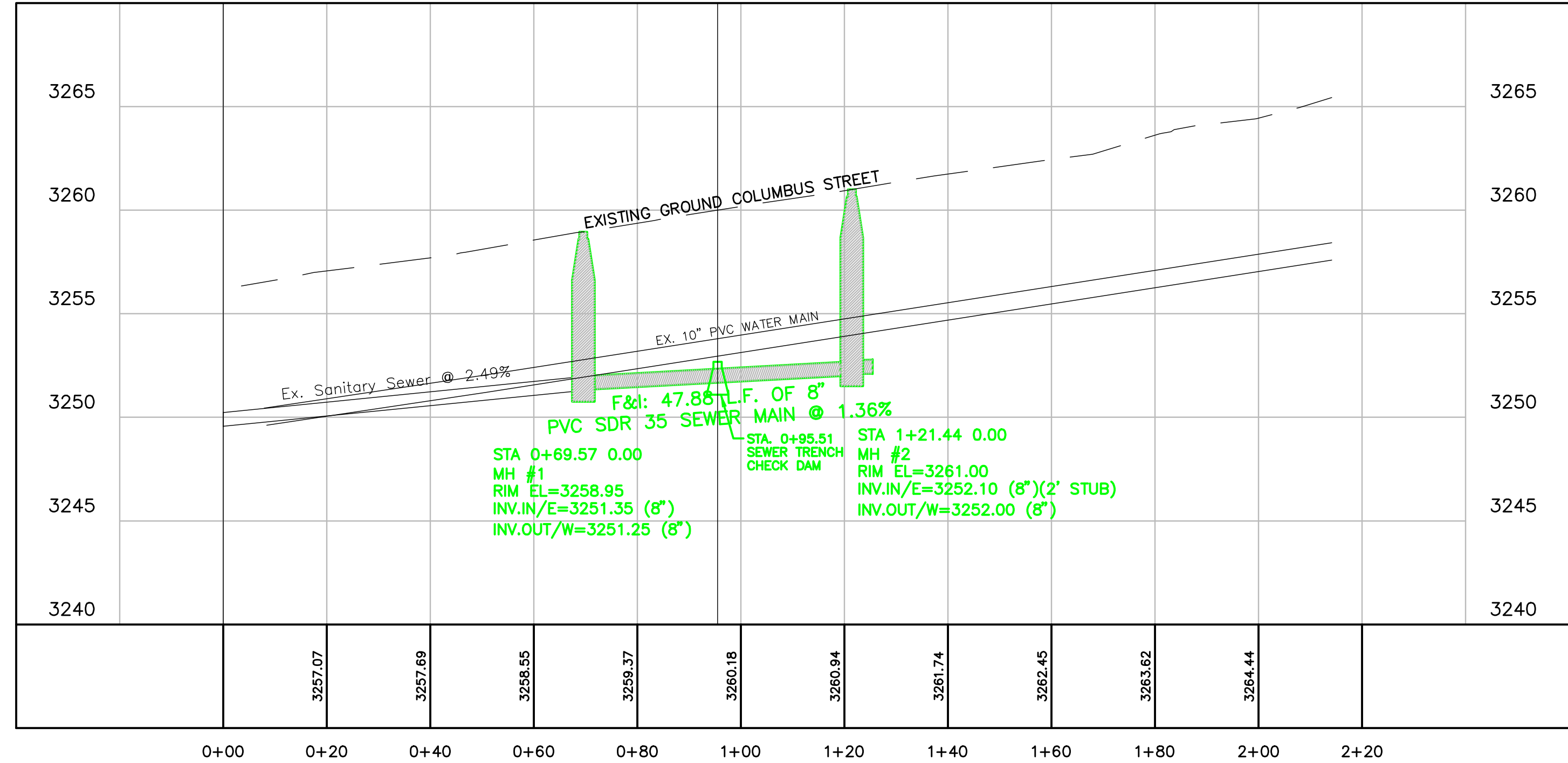
- STA. 0+69.57 CL
 NEW MH #1
 CONTRACTOR TO REMOVE THE EXISTING TERMINATION MH.
 F&I: STD. MANHOLE
 RIM EL=3258.95
 INV.IN/E=3251.35 (8")
 INV.OUT/W=3251.25 (8")
- STA. 0+71.57 CL TO STA. 1+19.44 CL
 F&I: 47.88 L.F. OF 8" PVC SDR 35 SEWER MAIN @ 1.36%
- STA. 1+21.44 CL
 NEW MH #2
 F&I: STD. MANHOLE
 RIM EL=3261.00
 INV.IN/E=3252.10 (8")(2' STUB)
 INV.OUT/W=3252.00 (8")

SANITARY SEWER SERVICE:

- 7 EA. TYP. SEWER SERVICE INCLUDES:
 4" WYE, 4" 90° BEND AND 4" PVC SEWER PIPE W/ MARKER POST
 STA. 1+17.44 - CL TO STA. 1+17.44 - 51.13' R (51.13 LF)

WATER NOTES:

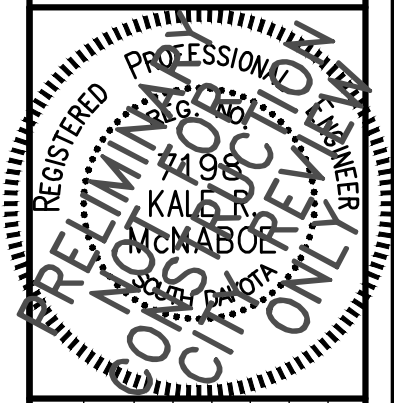
- F&I: NEW 1" CURB STOP & BOX AND
 F&I: 1" COPPER PIPE AT THE FOLLOWING LOCATIONS WITH DUAL GROUND CLAMPS & ANODES
 STA. 1+40.87 - 15.84' L TO STA. 1+41.04 - 51.13' R
 66.97 L.F. OF 1" COPPER. STA. 1+41.02 - 41.80' R (CS)



CITY OF RAPID CITY
 Plans are reviewed for general conformance with applicable governmental regulations, design criteria and engineering standards. The City of Rapid City does not certify the suitability, adequacy or completeness of the plans or design, which are the responsibility of the engineer of record. All necessary permits shall be obtained prior to construction of the proposed public improvements.

Engineering Reviewer _____ Date _____
 COMMENTS _____

1220 EAST MINNESOTA STREET
 RAPID CITY, SD 57701
 TEL: (605) 721-4040
 EMAIL: info@longbrancheng.com



REVISIONS	DATE	REVISION

LEGAL DESCRIPTION:
 LOTS 1, 2 AND E1/4 OF LOT 3 BLOCK 127
 ORIGINAL TOWN OF RAPID CITY
 SECTION 1, T1N, R7E, B14M
 RAPID CITY, PENNINGTON COUNTY, SOUTH DAKOTA
 SURVEYED BY: LCE
 DRAWN BY: DMW

SANITARY SEWER PLAN/PROFILE
 LOTS 1, 2 AND E1/4 OF LOT 3 OF BLOCK 127
 ORIGINAL TOWN OF RAPID CITY
 STA. 0+00.00 TO STA. 2+14.18

PROJECT NUMBER **3961**
 SHEET **4.2**