

Case No. 16PD039

Legal Description:

Unit 1 and Unit 2 and interest in Common Area of Abys Feed and Seed Condominium,
located in Section 1, T1N, R7E, BHM, Rapid City, Pennington County, South Dakota

June 30, 2016

Andrea Schaefer
412 5th Street
Rapid City, SD 57703
605-415-1111

To Whom it May Concern,

This letter is to request an annual beer and wine license for the Seed Theater inside Barefoot Dance Studio. Alcohol will be served during events that are held in the evenings, most commonly on the weekend. These events are typically music performances; however the space can be rented for other events such as parties or art exhibits.

Precautions will be taken to insure that minors do not consume alcohol and that all details will be handled in a legal manner. We do not hold events in the Seed Theater during times that there are kids' classes in Barefoot Dance Studio, and all alcohol is locked when not being sold.

If you have any questions regarding this request, please contact me at 415-1111.

Sincerely,

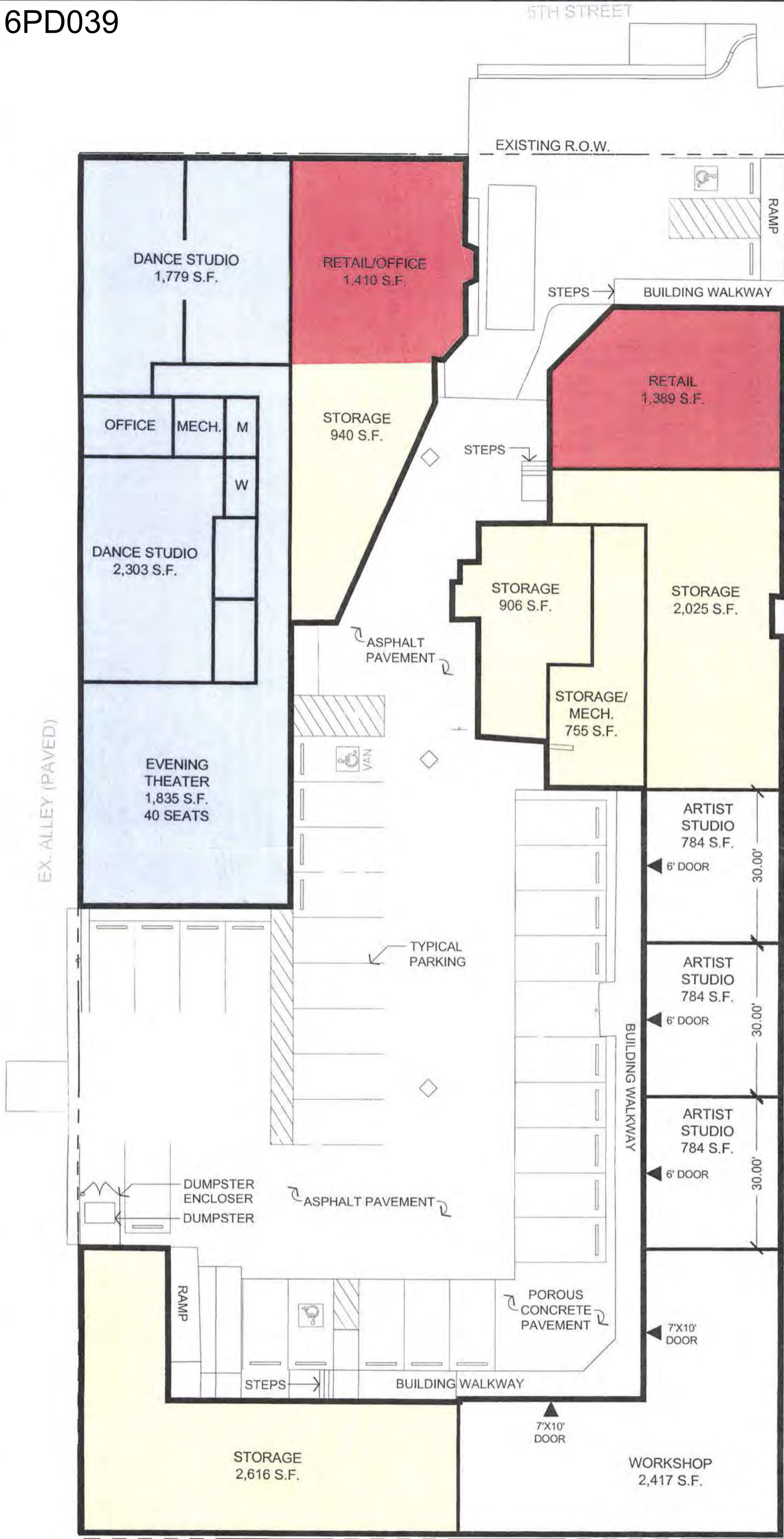


Andrea Schaefer

RECEIVED

AUG 09 2016

**RAPID CITY COMMUNITY PLANNING
& DEVELOPMENT SERVICES**



RECEIVED
 AUG 03 2016
 RAPID CITY COMMUNITY PLANNING
 & DEVELOPMENT SERVICES

RENNER ASSOCIATES, LLC
 CIVIL ENGINEERING • LAND SURVEYING
 616 SIXTH STREET
 RAPID CITY, SD 57701
 PH: 605. 721-7310
 FX: 605. 721-7313
 RENNERASSOC.COM

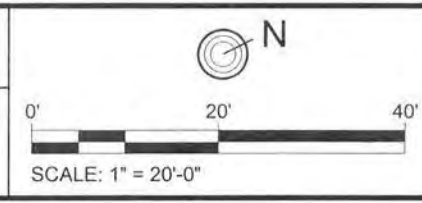
DEVELOPMENT SUMMARY

RETAIL	2,799 S.F.
INDOOR REC.	6,248 S.F.
STORAGE	7,242 S.F.
ARTIST STUDIO	4,769 S.F.

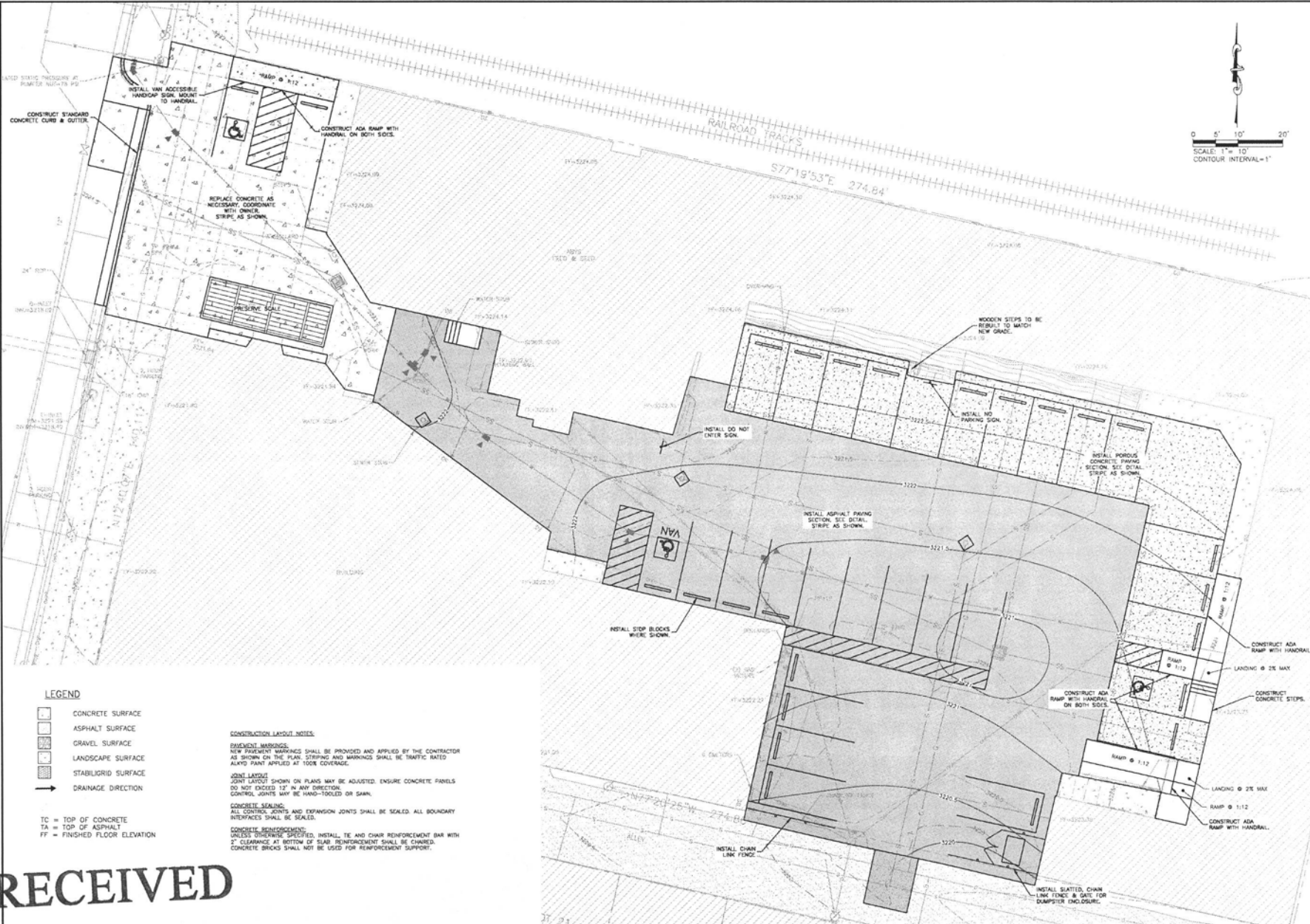
AUGUST 31, 2015

SHEET TITLE:
PROPOSED USAGE

PROJECT:
ABY'S FEED AND SEED REDEVELOPMENT



42 STREET
 DESIGN STUDIO
 42ND STREET DESIGN STUDIO
 321 KANSAS CITY STREET SUITE 210
 RAPID CITY, SOUTH DAKOTA 57701
 PH: (605) 791-2533



LEGEND

- CONCRETE SURFACE
 - ASPHALT SURFACE
 - GRAVEL SURFACE
 - LANDSCAPE SURFACE
 - STABILIZED SURFACE
 - DRAINAGE DIRECTION
- TC = TOP OF CONCRETE
 TA = TOP OF ASPHALT
 FF = FINISHED FLOOR ELEVATION

CONSTRUCTION LAYOUT NOTES:
PAVEMENT MARKINGS:
 NEW PAVEMENT MARKINGS SHALL BE PROVIDED AND APPLIED BY THE CONTRACTOR AS SHOWN ON THE PLAN. STRIPING AND MARKINGS SHALL BE TRAFFIC RATED ALAYS PAVT APPLIED AT 100% COVERAGE.
JOINT LAYOUT:
 JOINT LAYOUT SHOWN ON PLANS MAY BE ADJUSTED. ENSURE CONCRETE PANELS DO NOT EXCEED 12' IN ANY DIRECTION. CONTROL JOINTS MAY BE HAND-TOOLED OR SAHM.
CONCRETE SEALING:
 ALL CONTROL JOINTS AND EXPANSION JOINTS SHALL BE SEALED. ALL BOUNDARY INTERFACES SHALL BE SEALED.
CONCRETE REINFORCEMENT:
 UNLESS OTHERWISE SPECIFIED, INSTALL TE AND CHAIR REINFORCEMENT BAR WITH 2" CLEARANCE AT BOTTOM OF SLAB REINFORCEMENT SHALL BE CHAIRED. CONCRETE BRICKS SHALL NOT BE USED FOR REINFORCEMENT SUPPORT.

RENNER ASSOCIATES, LLC
 CIVIL ENGINEERING • LAND SURVEYING
 414 SOUTH WYOMING
 RAPID CITY, SD 57701
 P.O. BOX 791758
 RAPID CITY, SD 57701



Scale:	1"=10'
Designed By:	EMANUEL JIRO
Checked By:	JMD
Drawn Date:	8/20/14
Print Date:	7/20/2015
Reviewed By:	SCOTT DICK
Approval Date:	8/11/14
Revision:	01 - 7/20/15

NOTED: APPROVED FOR CONCRETE AFTER

ABY'S FEED AND SEED
 LOTS 6-16, BLOCK 76,
 ORIGINAL TOWN SITE
 SECTION 1, 11N, R7E, B1M
 CITY OF RAPID CITY, PENNINGTON COUNTY, SOUTH DAKOTA

Prepared For:	THE SEED LLC ATTN: WALTER ALBAS 1181 PARKWOOD ROAD RAPID CITY, SD 57701
Project Job No.:	#2697
Sheet Title:	SITE LAYOUT, SIGNING & STRIPING
Block #: 1	C-6

RECEIVED

AUG 03 2016