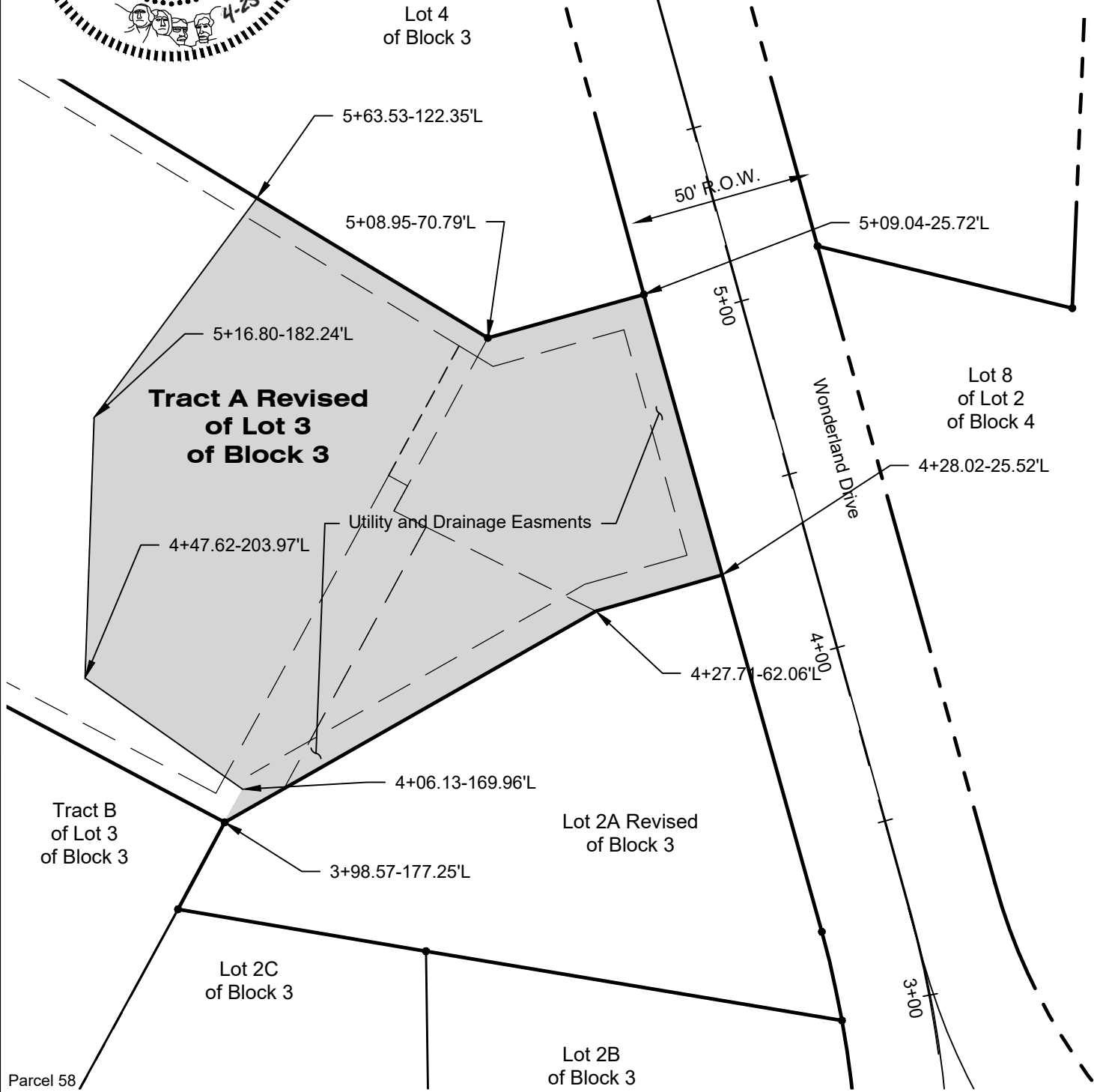
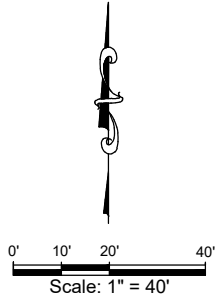
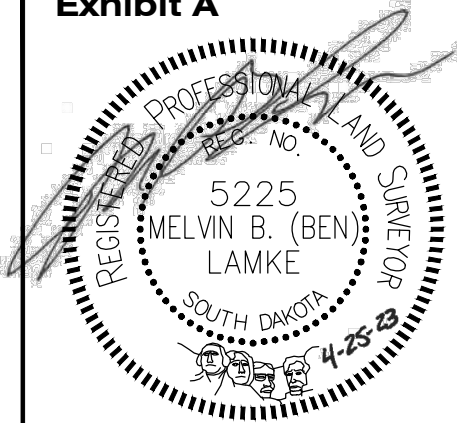


Exhibit A



Z:\10944.00 CORC-Wonderland Dr. Street & Utility\CAD\Plate and Easements\Parcel 58 TE.dwg - Parcel 58 - Monday, March 4, 2024 7:28:59 AM

Temporary Construction Easement
Tract A Revised of Lot 3 Block 3 of Grandview Tract
SE1/4 NW1/4 Section 16, T1N, R7E, BHM
Rapid City, Pennington County, South Dakota

Surveyed By:	EKJD
Date:	March-May 2021
Drawn By:	MDS/KJS
Checked By:	ZJK
Location:	NW1/4 Section 16
	T1N, R7E, BHM



FMG ENGINEERING
 3700 Sturgis Road
 Rapid City, SD 57702
 605.342.4105 • fmgengineering.com