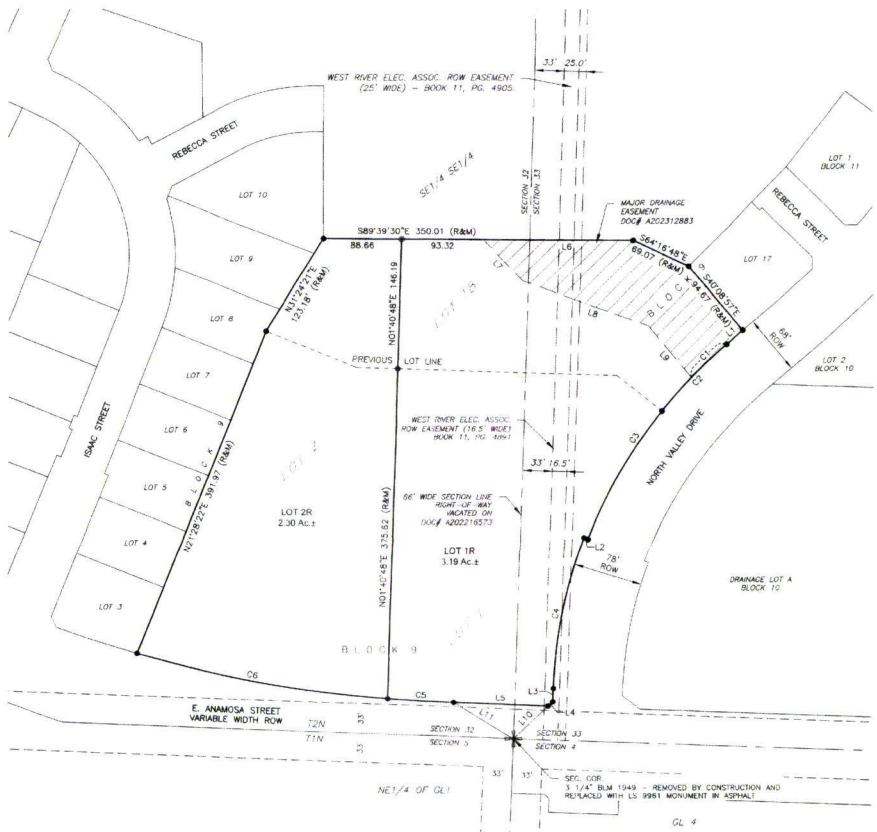


Case No. 24RZ002

**Legal Description:**

A portion of Lots 1R and 2R of Block 9 of Shepherd Hills South Subdivision, all in Sections 32 and 33, T2N, R8E, BHM, Rapid City, Pennington County, South Dakota, more fully described as follows: Commencing at the northeast corner of Lot 1R, Block 9 of Shepherd Hills South Subdivision and coincident with the westerly right-of-way of North Valley Drive, being monumented by a 5/8 inch rebar with plastic cap stamped LS9961; Thence (1) with the east line of said Lot 1R and coincident with the northwesterly right-of-way of North Valley Drive, South 49°51'03" West, 24.19 feet more or less; Thence (2) continuing with said east line of said Lot 1R and said right-of-way along a curve to the left with an arc length of 104.38 feet, with a radius of 534.00 feet, with a chord bearing of South 44°15'05" West, with a chord length of 104.21 feet more or less; Thence (3) leaving said right-of-way, North 51°20'54" West, 64.33 feet more or less; Thence (4) North 88°11'11" West, 247.57 feet more or less to a point common to Lots 1R and 2R, Block 9 of Shepherd Hills South Subdivision; Thence (5) North 88°11'11" West, 46.79 feet more or less; Thence (6) North 68°31'38" West, 109.38 feet more or less to a point on the westerly line of Lot 2R, Block 9 of Shepherd Hills South Subdivision, being monumented by a 5/8 inch rebar with plastic cap stamped LS9961; Thence (7) with said westerly line of Lot 2R, North 31°24'21" East, 123.18 feet more or less to the northwest corner of Lot 2R, Block 9 of Shepherd Hills South Subdivision, being monumented by a 5/8 inch rebar with plastic cap stamped LS9961; Thence (8) with the northerly line of Lot 2R South 89°39'30" East, 88.66 feet more or less to the northeast corner of said Lot 2R, coincident with the northwest corner of Lot 1R, Block 9 of Shepherd Hills South Subdivision, being monumented by a 5/8 inch rebar with plastic cap stamped LS9961; Thence (9) with the northerly line of said Lot 1R, South 89°39'30" East, 261.35 feet more or less to an angle point in the north line of said Lot 1R, being monumented by a 5/8 inch rebar with plastic cap stamped LS9961; Thence (10) continuing with the northerly line of said Lot 1R, South 64°16'48" East, 69.07 feet more or less to an angle point in the north line of said Lot 1R, being monumented by a 5/8 inch rebar with plastic cap stamped LS9961; Thence (11) continuing with the northerly line of said Lot 1R, South 40°08'57" East, 94.67 feet more or less to the point of beginning

LOTS 1R AND 2R OF BLOCK 9 OF  
SHEPHERD HILLS SOUTH SUBDIVISION  
(formerly all of Lots 1, 2 and 18 of Block 9 of Shepherd Hills South Subdivision)  
LOCATED IN THE SE1/4 OF SECTION 32 AND IN THE SW1/4 OF SECTION 33, T2N, R8E, BHM,  
CITY OF RAPID CITY, PENNINGTON COUNTY, SOUTH DAKOTA



LINE TABLE

LINE #	LENGTH	DIRECTION
L1 (R&M)	24.19	S49°51'03"W
L2 (R&M)	5.00	N69°21'12"W
L3 (R&M)	16.02	S01°59'30"W
L4 (R&M)	7.12	S46°58'29"W
L5 (R&M)	106.46	N88°01'32"W
L6	168.02	S89°39'30"E
L7	64.29	S43°03'41"E
L8	150.21	S70°03'12"E
L9	75.15	S39°41'46"E
L10 (TIE)	53.16	S44°20'50"W
L11 (TIE)	79.02	S59°16'53"E

CURVE TABLE

CURVE	LENGTH	RADIUS	DELTA	CHORD BEARING	CHORD DISTANCE
C1	54.36	534.00	005°49'58"	S46°56'05"W	54.34
C2 (R&M)	104.38	534.00	011°11'58"	S44°15'05"W	104.21
C3 (R&M)	167.81	534.00	018°00'18"	S29°38'57"W	167.12
C4 (R&M)	175.45	539.00	018°38'59"	S11°19'18"W	174.67
C5 (R&M)	75.04	1462.00	002°58'27"	N88°33'18"W	75.03
C6 (R&M)	286.30	1462.00	011°13'12"	N79°28'29"W	285.84

**LEGEND**

- DENOTES SET SURVEY MONUMENT 1 1/4" PC MARKED "KTM-8961"
- DENOTES FOUND SURVEY MONUMENT 1 1/4" PC MARKED "KTM-8961" UNLESS OTHERWISE NOTED
- ⊕ DENOTES SECTION CORNER
- (P) DENOTES RECORDED IN PREVIOUS PLAT OR DESCRIPTION
- (M) DENOTES MEASURED IN THIS SURVEY

8' WIDE UTILITY AND MINOR DRAINAGE EASEMENTS (DOC# A202312883) ARE VACATED IN FAVOR OF UTILITY AND MINOR DRAINAGE EASEMENTS THIS DOCUMENT - 8' ON THE INTERIOR SIDES OF ALL LOT LINES, EXCEPT WHEN MAJOR DRAINAGE EASEMENTS ARE.

ALL MAJOR DRAINAGE EASEMENTS AND DRAINAGE LOTS SHOWN HEREON SHALL BE KEPT FREE OF ALL OBSTRUCTIONS INCLUDING BUT NOT LIMITED TO BUILDINGS, WALLS, FENCES, HEDGES, TREES AND SHRUBS. THESE EASEMENTS GRANT TO ALL PUBLIC AUTHORITIES THE RIGHT TO CONSTRUCT, OPERATE, MAINTAIN, RESPECT, AND REPAIR SUCH IMPROVEMENTS AND STRUCTURES AS IT DEEMS EXPEDIENT TO FACILITATE DRAINAGE FROM ANY SOURCE.

**BASIS OF BEARINGS:** BASIS OF BEARING IS CITY OF RAPID CONTROL NETWORK - SOUTH DAKOTA STATE PLAN SOUTH ZONE (NAD83-2011). MEASURED DISTANCES ARE ON SURFACE PROJECTION USING A COMBINED SCALE FACTOR FOR PROJECT OF 1.00021181.

