



1'-4"



2'-0"

1'-4"



2'-0"

Please review your proof to verify:

- Spelling
- Grammar
- Quantities
- Dimensions
- Colors (specify)
- Layout

If changes need to be made, please note on the proof and fax or e-mail back.

Production *will not* proceed until approved.

- APPROVED AS IS
- APPROVED WITH CHANGES
- UNAPPROVED - CHANGES NEEDED

Signature \_\_\_\_\_ Date \_\_\_\_\_

Copyright Notice ©  
This drawing and all reproductions thereof are the property of Signs and may not be reproduced, published, changed or used in any way without written consent.

Customer: Gordon & Rees Scully Mansukhani

Date: 8/11/16

Drawn by: DH

Scale: 1.5"=1'0"

Salesman: Dan Hop

Size: 16"h x 24"w

Overall Sq/Ft: 2.66

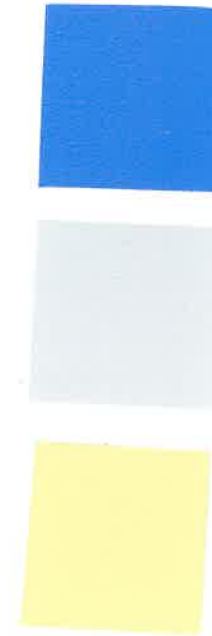
### S P E C I F I C A T I O N S

Notes: Sandblasted redwood sign, painted letters and border with stained background



118 Main St. Rapid City, SD 57701

605 343.4603 605 343.6699



Please review your proof to verify:

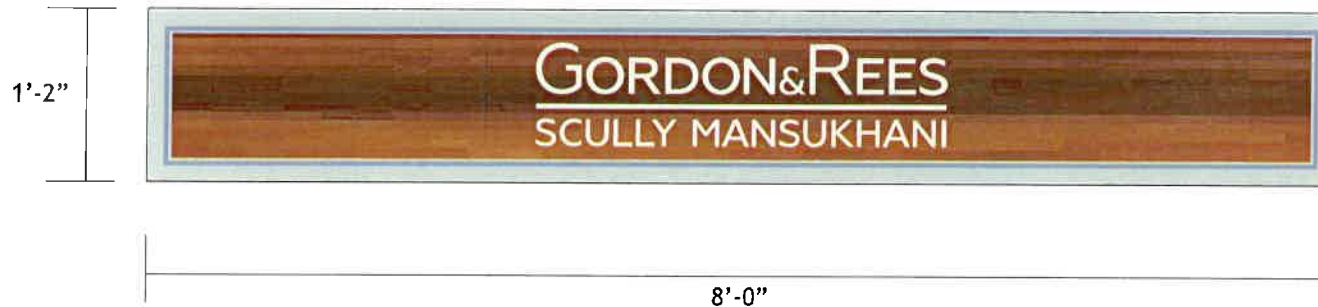
- Spelling
- Grammar
- Quantities
- Dimensions
- Colors (*specify*)
- Layout

If changes need to be made, please note on the proof and fax or e-mail back.

Production *will not* proceed until approved.

- APPROVED AS IS
- APPROVED WITH CHANGES
- UNAPPROVED - CHANGES NEEDED

Signature \_\_\_\_\_ Date \_\_\_\_\_



**Copyright Notice ©**  
 This drawing and all reproductions thereof are the property of Lingua Signs and may not be reproduced, stored, changed or used in any way without written consent.

Customer: Gordon & Rees Scully Mansukhani

Date: 8/11/16 Drawn by: DH

Scale: 3/4"=1'-0" Salesman: Dan Hop

Size: 14"h x 96"w Overall Sq/Ft: 10.39

### S P E C I F I C A T I O N S

Notes: Sandblasted redwood sign, painted letters and border with stained background



118 Main St. Rapid City, SD 57701

605 343.4603 605 343.6699



**Legend**

**Roads**

- Interstate
- US highway
- SD highway
- County highway
- Main road
- Minor arterial
- Collector
- Ramp
- Paved road
- Unpaved road
- Unimproved road
- Trail
- Airport Runway
- Not yet coded

**Address Points**

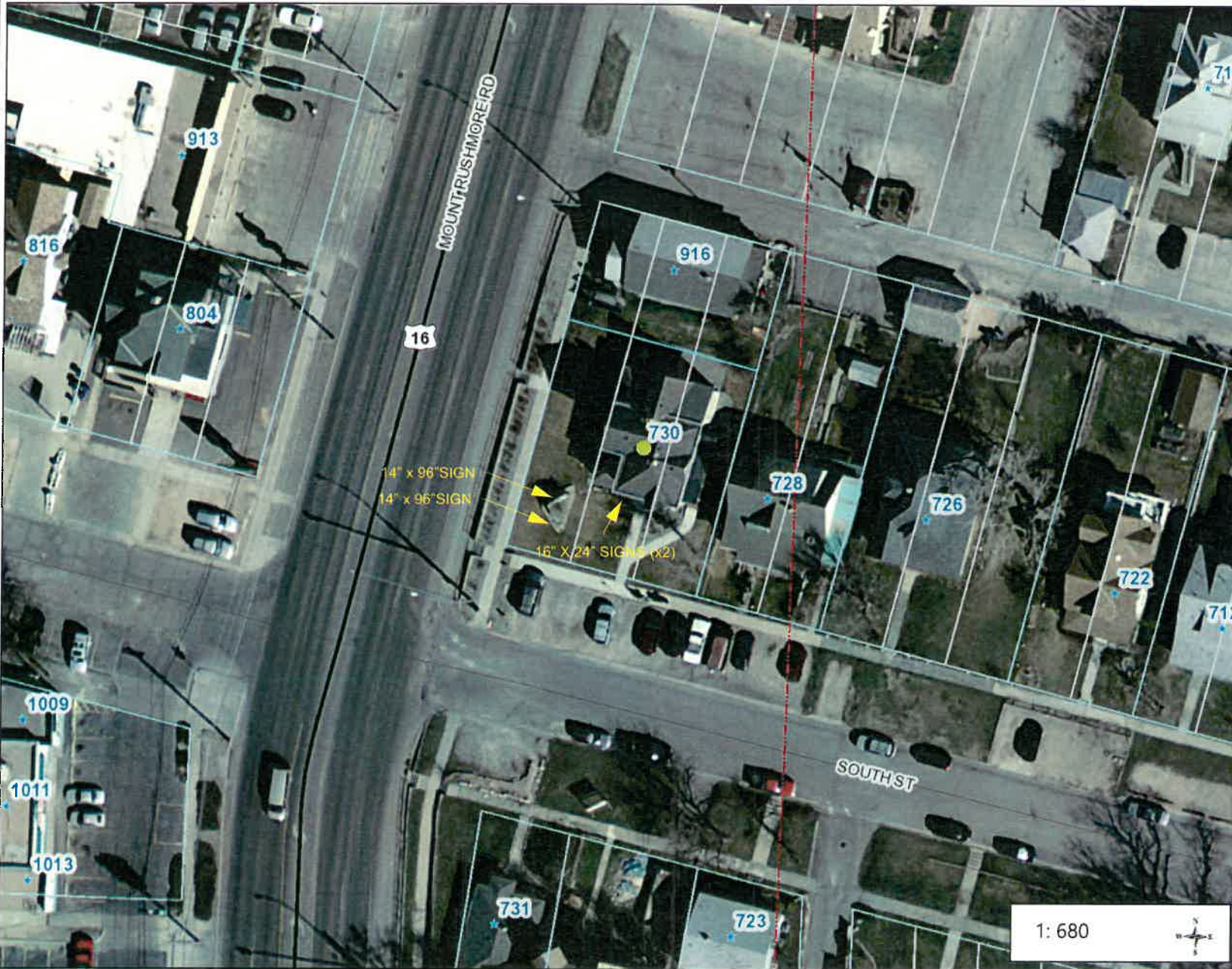
**Section Lines 0-25k**

- 0
- 7

**Tax Parcels**

**Lot Lines**

- <Null>
- Lot Line
- Parcel Line



1: 680



Map Notes: