

Case No. 16VR009

**Legal Description:**

That portion of the Section Line Right-of-Way in Lot 2 of Block 1 of LaGrand Subdivision located in the SE1/4 of the SE1/4 of Section 28 and in the NE1/4 of the NE1/4 of Section 33, T2N, R8E, BHM, Rapid City, Pennington County, South Dakota and Lot 1 of Block 1 of LaGrand Subdivision, located in the SE1/4 of the SE1/4 of Section 28 and in the NE1/4 of the NE1/4 of Section 33, T2N, R8E, BHM, Rapid City, Pennington County, South Dakota

EXHIBIT 'A'

# VACATION OF SECTION LINE RIGHT OF WAY IN LOT 1 OF BLOCK 1 OF LAGRAND SUBDIVISION

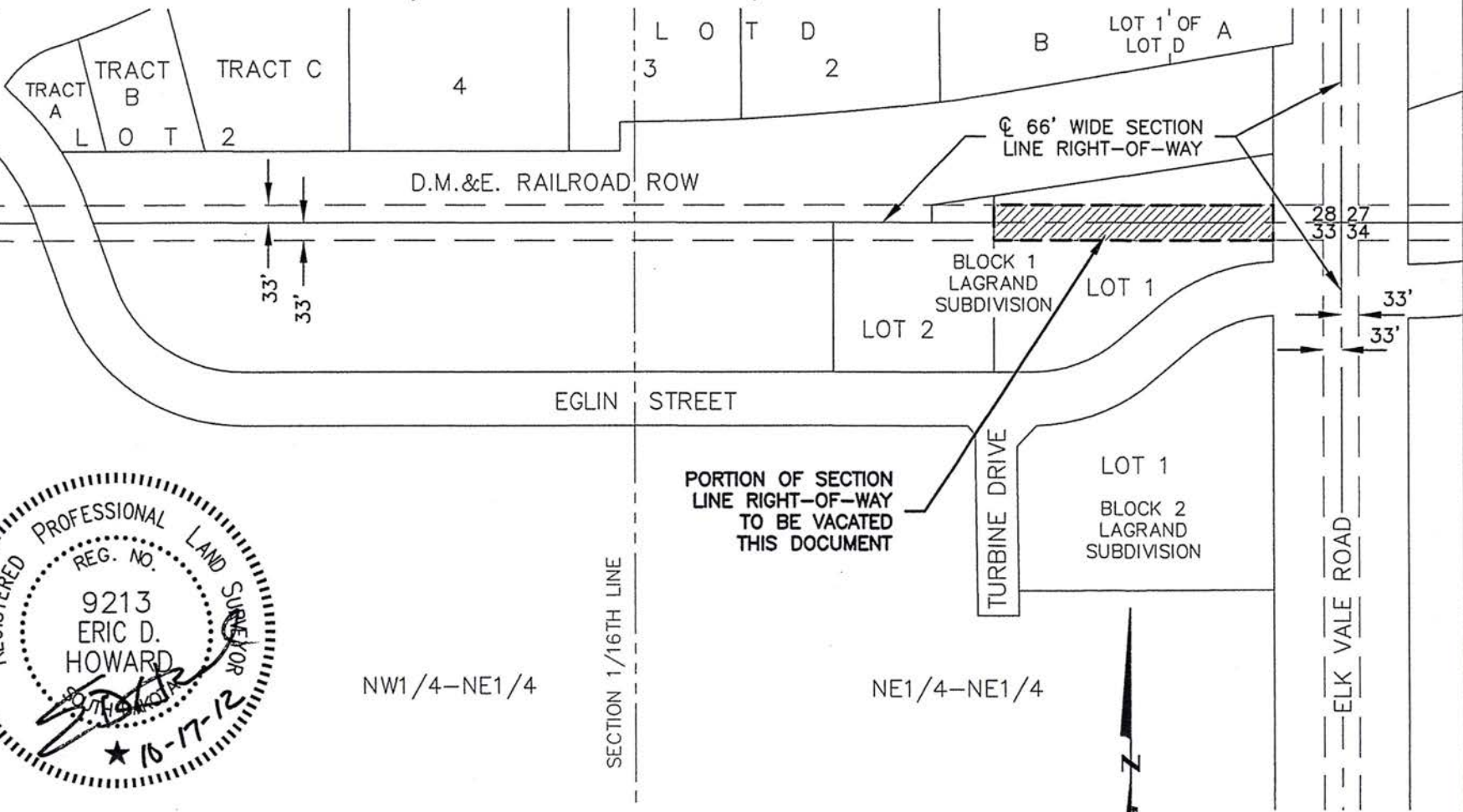
LOCATED IN THE SE1/4 OF THE SE1/4 OF SECTION 28 &  
IN THE NE1/4 OF THE NE1/4 OF SECTION 33  
T2N, R8E, BHM

RAPID CITY, PENNINGTON COUNTY, SOUTH DAKOTA

Rapid City Community Planning  
& Development Services

JUL 21 2016

RECEIVED



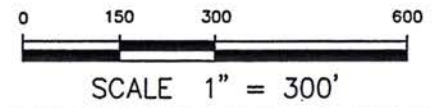
PORTION OF SECTION LINE RIGHT-OF-WAY TO BE VACATED THIS DOCUMENT



## RENNER & ASSOCIATES, LLC.

616 SIXTH ST. \* RAPID CITY, SD 57701  
PHONE: 605/721-7310 \* FAX: 605/721-7313  
EMAIL: GARY@RENNERASSOC.COM

OCTOBER 17, 2012



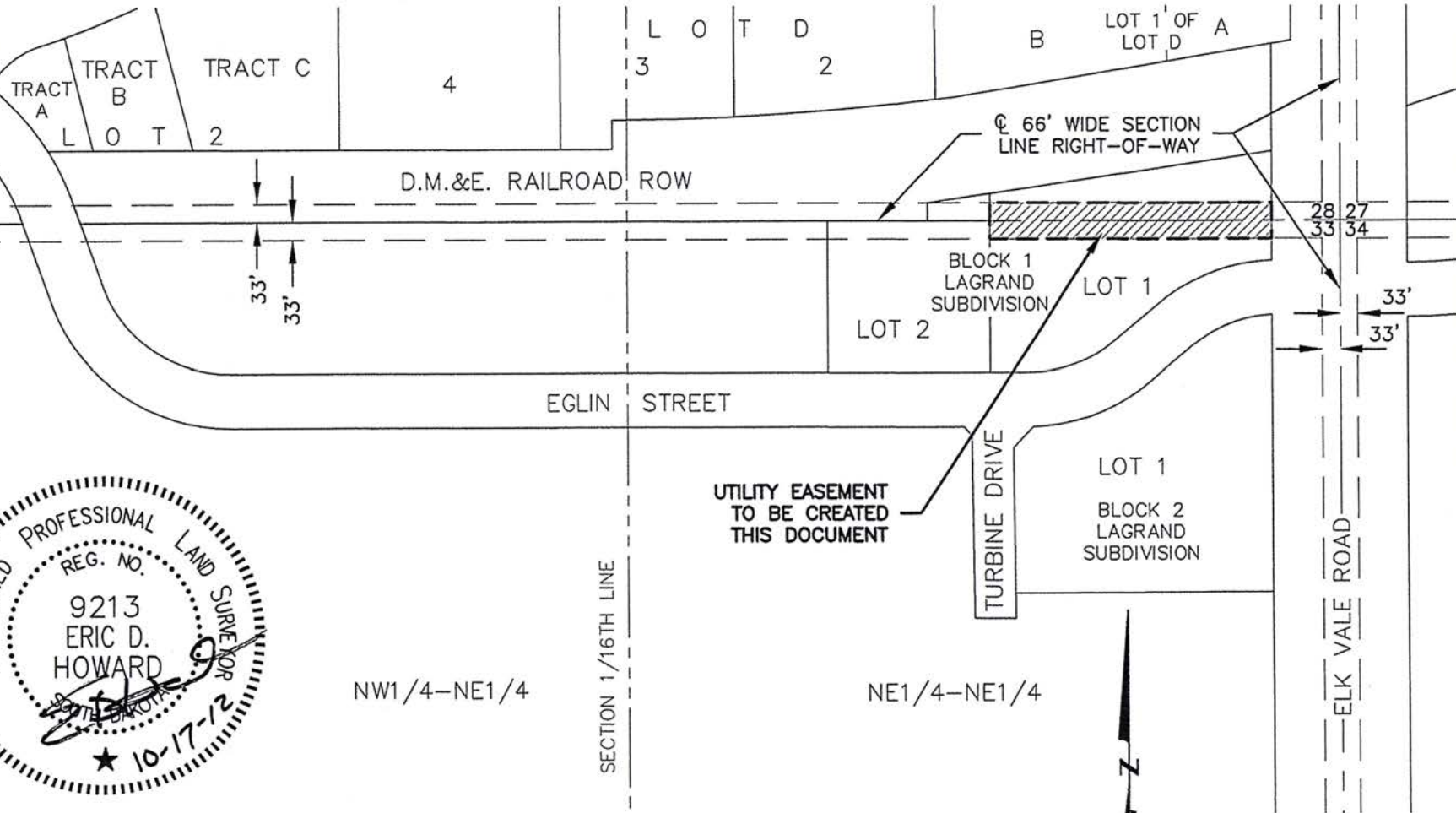
# EXHIBIT 'A' UTILITY EASEMENT LOT 1 OF BLOCK 1 OF LAGRAND SUBDIVISION

LOCATED IN THE SE1/4 OF THE SE1/4 OF SECTION 28 &  
IN THE NE1/4 OF THE NE1/4 OF SECTION 33  
T2N, R8E, BHM  
RAPID CITY, PENNINGTON COUNTY, SOUTH DAKOTA

Rapid City Community Planning  
& Development Services

JUL 21 2016

RECEIVED



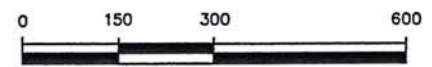
## RENNER & ASSOCIATES, LLC.

616 SIXTH ST. \* RAPID CITY, SD 57701  
PHONE: 605/721-7310 \* FAX: 605/721-7313  
EMAIL: GARY@RENNERASSOC.COM

UTILITY EASEMENT  
TO BE CREATED  
THIS DOCUMENT



OCTOBER 17, 2012



SCALE 1" = 300'

EXHIBIT 'A'

# VACATION OF SECTION LINE RIGHT OF WAY IN LOT 2 OF BLOCK 1 OF LAGRAND SUBDIVISION

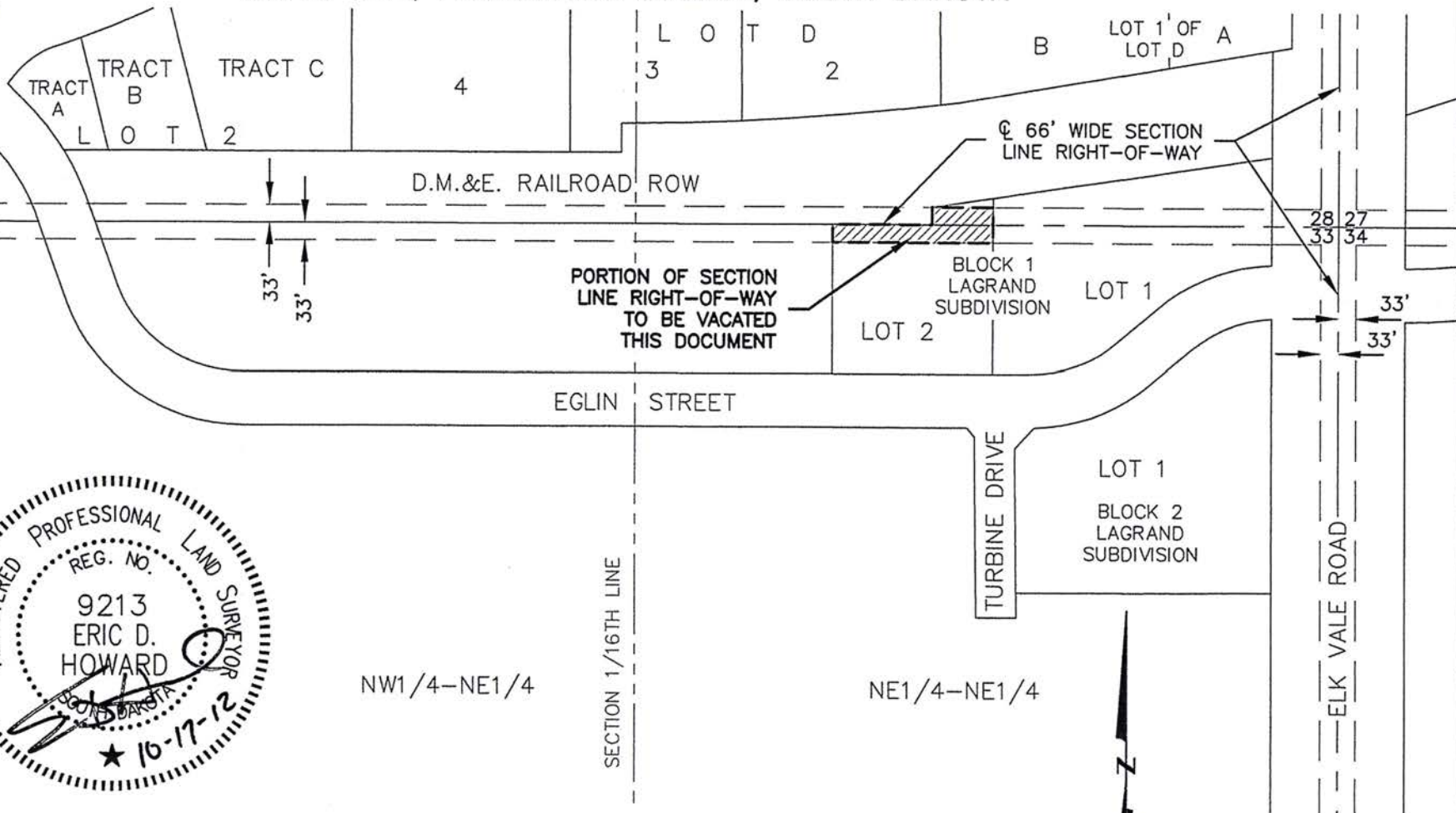
LOCATED IN THE SE1/4 OF THE SE1/4 OF SECTION 28 &  
IN THE NE1/4 OF THE NE1/4 OF SECTION 33  
T2N, R8E, BHM

RAPID CITY, PENNINGTON COUNTY, SOUTH DAKOTA

Rapid City Community Planning  
& Development Services

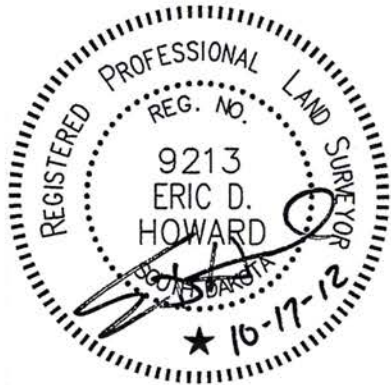
JUL 21 2016

RECEIVED



NE1/4 OF THE NW1/4

SECTION 1/4 LINE



NW1/4-NE1/4

SECTION 1/16TH LINE

NE1/4-NE1/4



CITY HALL 1903

## RENNER & ASSOCIATES, LLC.

616 SIXTH ST. \* RAPID CITY, SD 57701  
PHONE: 605/721-7310 \* FAX: 605/721-7313  
EMAIL: GARY@RENNERASSOC.COM

OCTOBER 17, 2012

0 150 300 600



SCALE 1" = 300'

EXHIBIT 'A'

# UTILITY EASEMENT

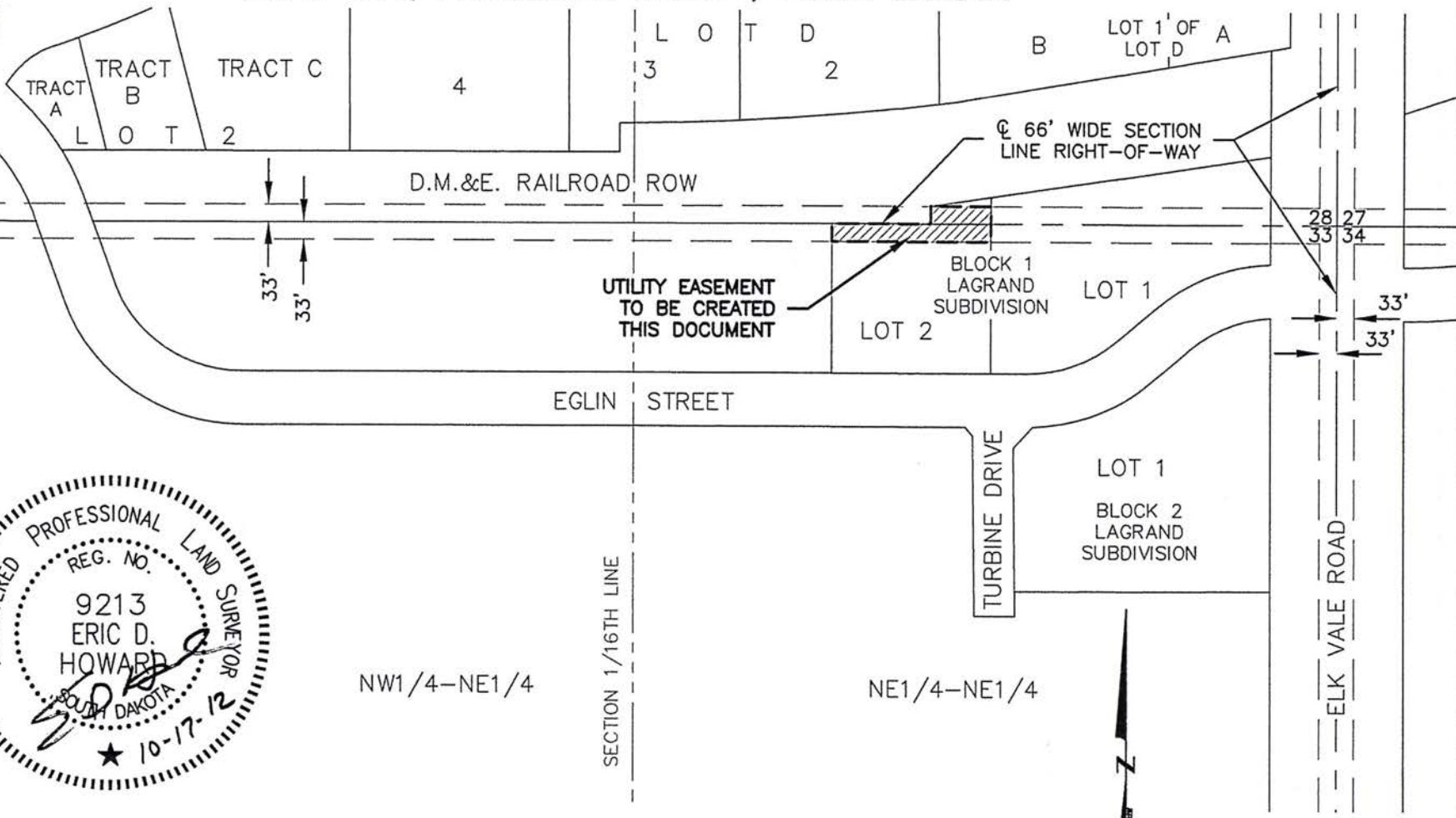
## LOT 2 OF BLOCK 1 OF LAGRAND SUBDIVISION

LOCATED IN THE SE1/4 OF THE SE1/4 OF SECTION 28 &  
IN THE NE1/4 OF THE NE1/4 OF SECTION 33  
T2N, R8E, BHM  
RAPID CITY, PENNINGTON COUNTY, SOUTH DAKOTA

Rapid City Community Planning  
& Development Services

JUL 21 2016

RECEIVED



SECTION 1/4 LINE  
NE1/4 OF THE NW1/4

SECTION 1/16TH LINE

NW1/4-NE1/4

NE1/4-NE1/4



CITY HALL 1903

### RENNER & ASSOCIATES, LLC.

616 SIXTH ST. \* RAPID CITY, SD 57701  
PHONE: 605/721-7310 \* FAX: 605/721-7313  
EMAIL: GARY@RENNERASSOC.COM

OCTOBER 17, 2012



SCALE 1" = 300'