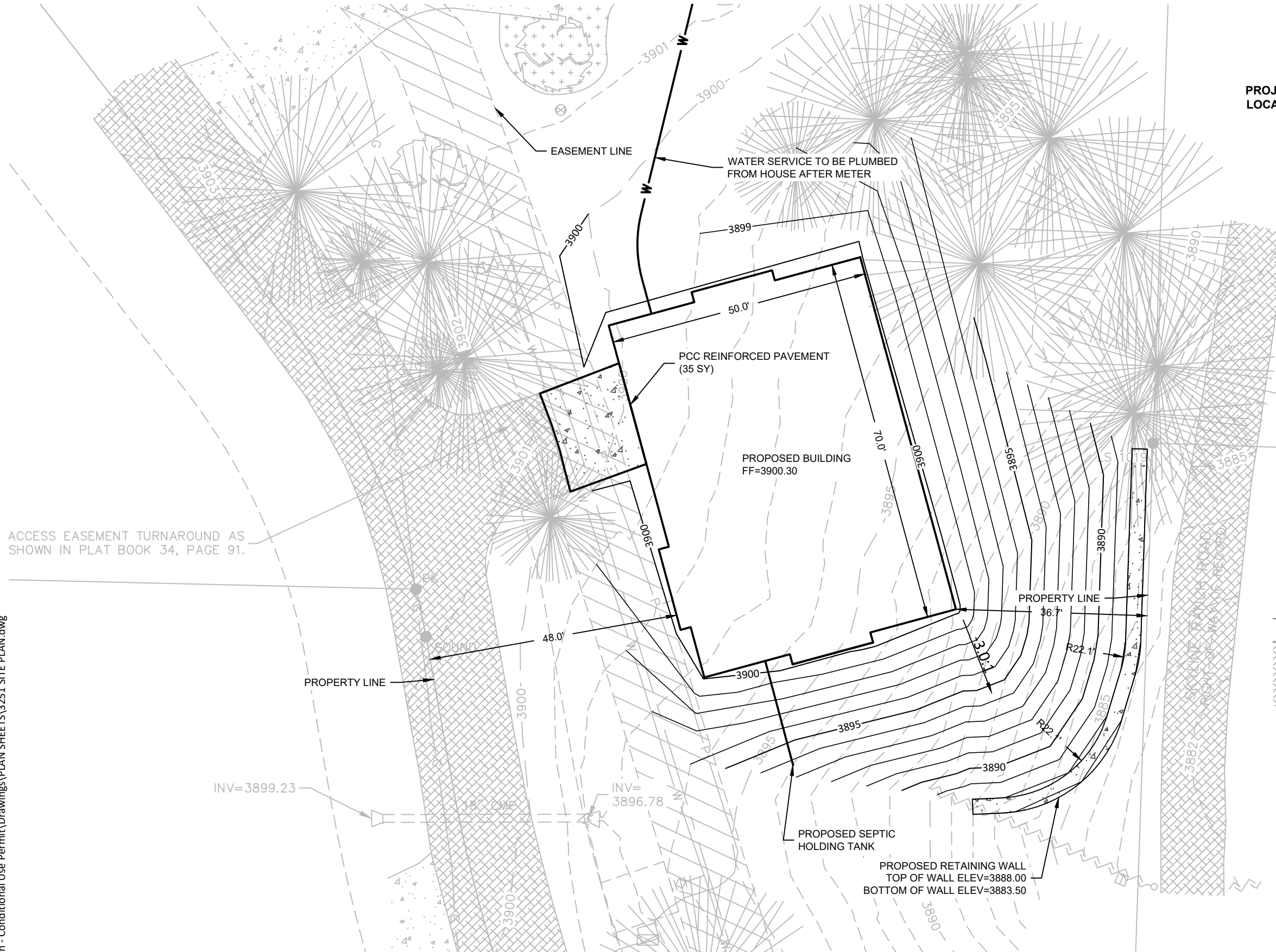


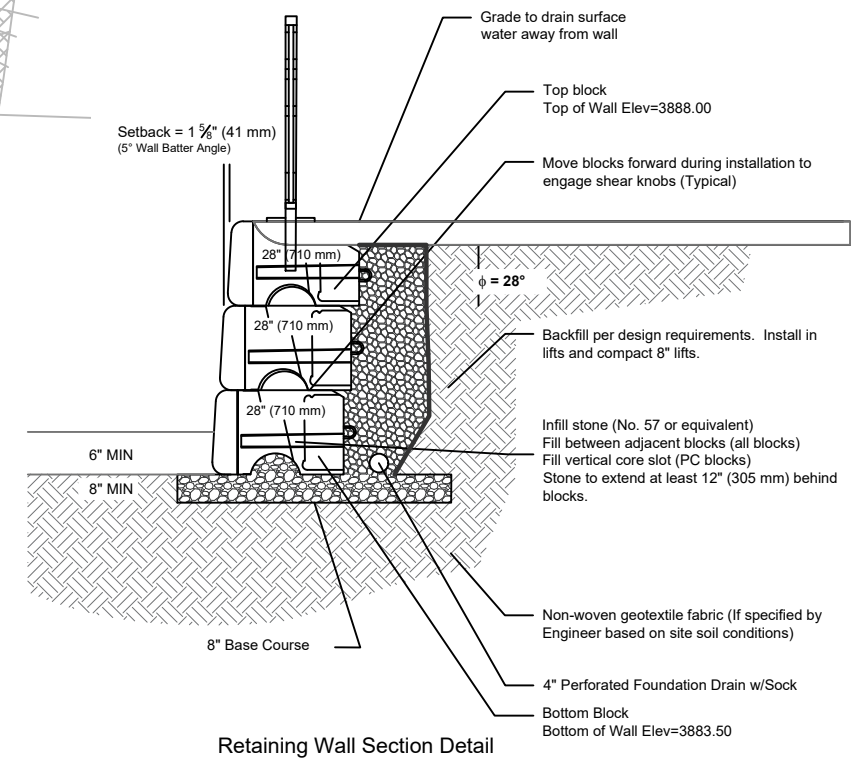


PROJECT LOCATION

VICINITY MAP
NTS



ACCESS EASEMENT TURNAROUND AS SHOWN IN PLAT BOOK 34, PAGE 91.

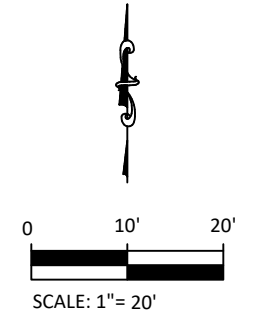


Retaining Wall Section Detail

SITE PLAN

2150 SKYLINE RANCH ROAD
RAPID CITY, SOUTH DAKOTA

RENNER ASSOCIATES, LLC
CIVIL ENGINEERING • LAND SURVEYING
RENNERASSOC.COM
3231 TEEWINOT DRIVE, RAPID CITY, SD 57703
PH: 605. 721-7310



SCALE: 1"= 20'

PROJECT # 3251
DATE: 8/30/2023

8/30/23 S:\3251 Skyline Ranch - Conditional Use Permit\Drawings\PLAN SHEETS\3251 SITE PLAN.dwg