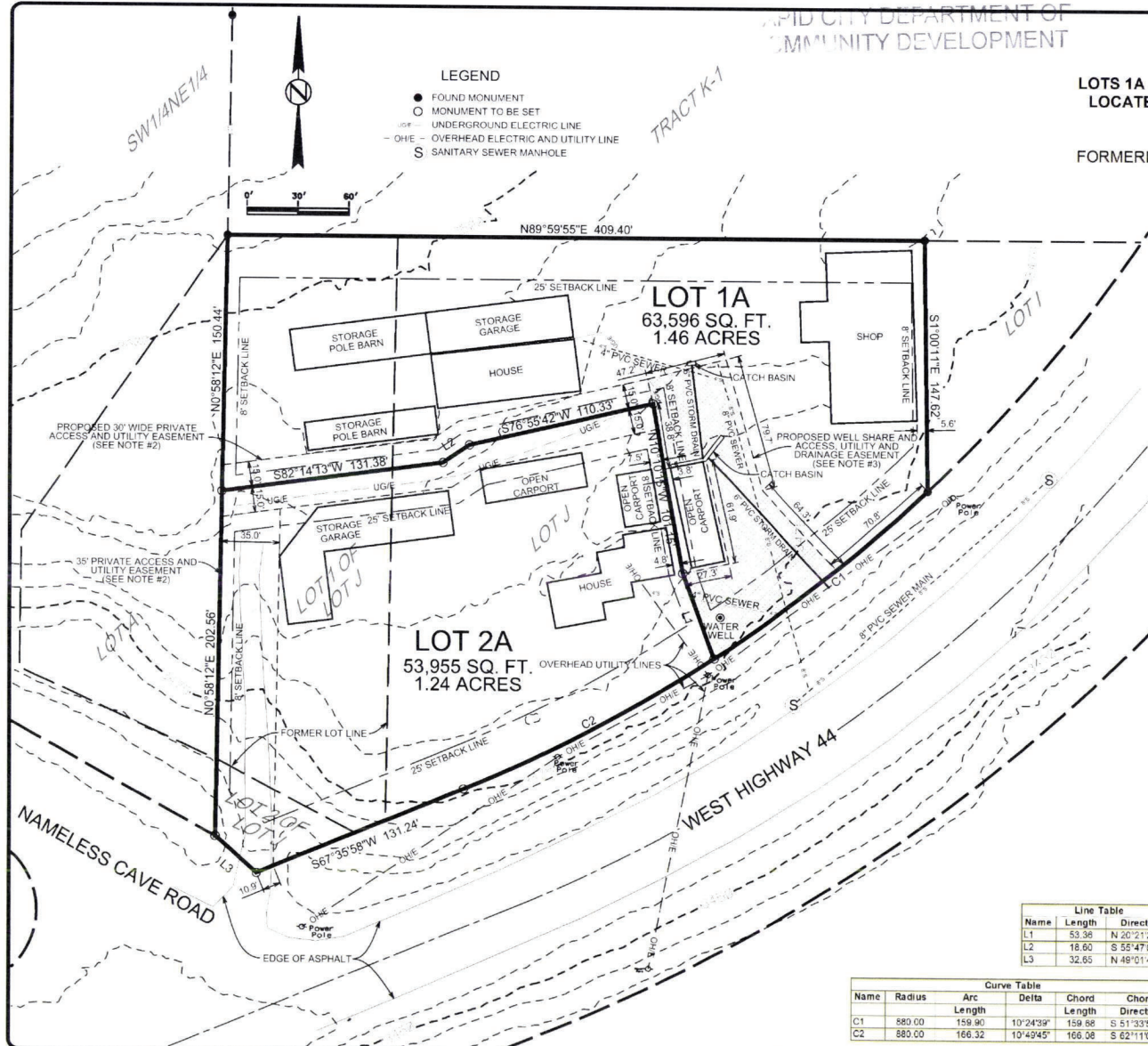


RECEIVED

DEC 08 2022

RAPID CITY DEPARTMENT OF
COMMUNITY DEVELOPMENT

PRELIMINARY PLAT
OF
LOTS 1A AND 2A OF LOT J IN PARCEL No. 2 OF CANYON PARK,
LOCATED IN THE SE1/4NE1/4 OF SECTION 18, T1N, R7E, BHM
PENNINGTON COUNTY, SOUTH DAKOTA
FORMERLY LOTS 1 AND 2 OF LOT J AND LOT J OF PARCEL No. 2
OF CANYON PARK

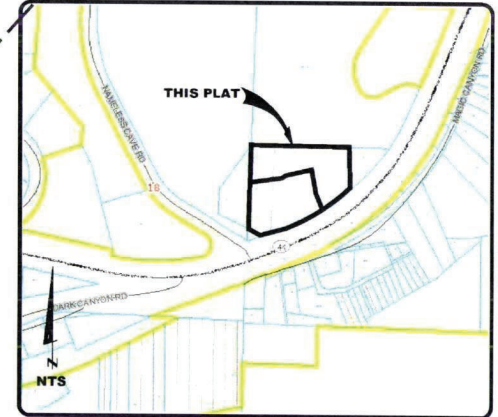


LEGEND

- FOUND MONUMENT
- MONUMENT TO BE SET
- UGF — UNDERGROUND ELECTRIC LINE
- OHE — OVERHEAD ELECTRIC AND UTILITY LINE
- S SANITARY SEWER MANHOLE

Notes:

1. Basis of Bearings: GPS observed north at Latitude: 44°02'51.4845N, Longitude: 103°18'53.237"W NAD83 (2011).
2. The proposed 35' wide access and utility easement and the 30' wide access and utility easement shown hereon are for the use and benefit of Lots 1A and 2A of Lot J and Lot A and will be more specifically detailed and recorded under a separate document simultaneously with the final plat.
3. The Well Share and Utility and Drainage Easement shown here on is for the use and benefit of Lots 1A and 2A of Lot J and will be more specifically detailed and recorded under a separate document simultaneously with the final plat.
4. Contours: 5' interval acquired from USGS Lidar data.
5. Total area this plat: 117,551 Sq. Ft. (2.70 acres).



AREA MAP

Prepared By:

Name	Length	Direction
L1	53.38	N 20°21'21" W
L2	18.60	S 55°47'00" W
L3	32.65	N 48°01'48" W

Name	Radius	Arc Length	Delta	Chord Length	Chord Direction
C1	880.00	159.90	10°24'39"	159.88	S 51°33'54" W
C2	880.00	166.32	10°49'45"	166.28	S 62°11'06" W

Surveyed By: <u>WM</u>	Date: <u>12/07/2022</u>	<p>Interstate Engineering, Inc. P.O. Box 226 130 Industrial Drive, Suite 2 Sioux Falls, S.D. 57103 PH (605) 642-4772 Fax (605) 642-4773 www.interstateeng.com 2016-2017, 2019-2022</p>
Drawn By: <u>WM</u>	Date: <u>12/08/2022</u>	
Checked By: <u>WM</u>	Date: <u>12/09/2022</u>	
Project Number: <u>WC22-11-093</u>		