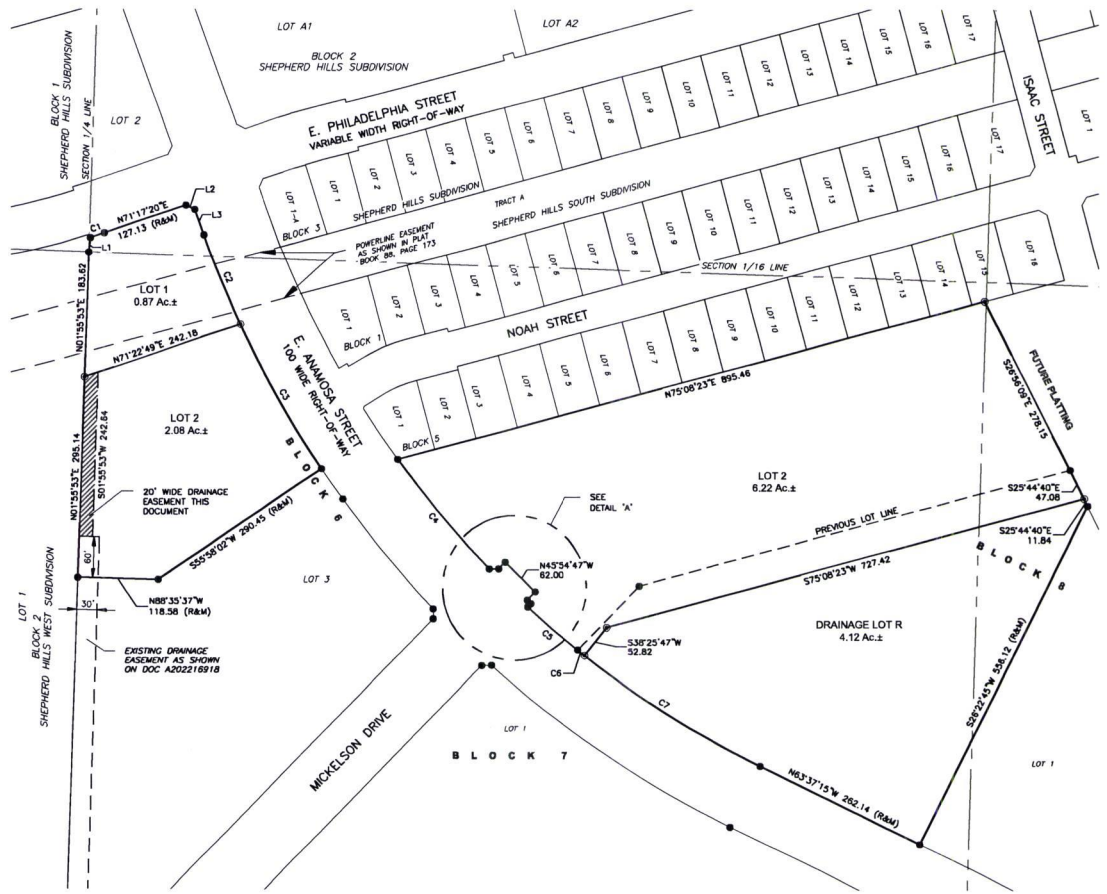


Case No. 22RZ018

Legal Description:

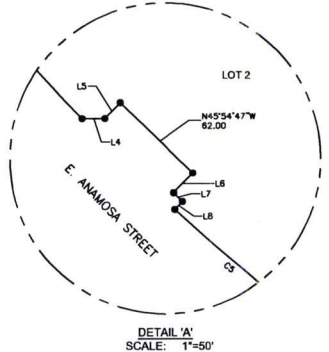
Located in a portion of the SW1/4-NW1/4-SE1/4 of Section 32, T2N, R8E, BHM, and a portion of the N1/2-SW1/4-SE1/4 of Section 32, T2N, R8E, BHM, Rapid City, Pennington County, South Dakota, commencing at the Center South 1/16th corner of Section 32, T2N, R8E, being monumented by a 5/8 inch rebar with plastic cap marked LS3095, also being on the easterly boundary of Lot 1, Block 2 of Shepherd Hills West Subdivision, and being the point of beginning; Thence (1) with said easterly boundary, North 6°15'28" East, 21.06 feet +/- to a point on the south right-of-way of East Philadelphia Street; Thence (2) easterly with said south right-of-way along a non-tangent curve turning to the left with an arc length of 21.66 feet, with a radius of 1039.00 feet, with a chord bearing of North 71°55'03" East, with a chord length of 21.66 feet +/-; Thence (3) continuing with said south right-of-way, North 71°17'20" East, 127.13 feet +/-; Thence (4) continuing with said south right-of-way, South 64°12'41" East, 14.27 feet +/-; Thence (5) with the westerly right-of-way of East Anamosa Street, South 19°42'37" East, 39.59 feet +/-; Thence (6) continuing with said westerly right-of-way, southerly on a curve turning to the left with an arc length of 141.82 feet, with a radius of 1562.00 feet, with a chord bearing of South 22°18'43" East, with a chord length of 141.77 feet +/-; Thence (7) leaving said westerly right-of-way, South 71°22'49" West, 242.18 feet +/- to a point on the easterly boundary of Lot 1, Block 2 of Shepherd Hills West Subdivision; Thence (8) with said easterly boundary, North 1°55'53" East, 183.62 feet +/- to the point of beginning

PLAT OF
 LOTS 1 AND 2 OF BLOCK 6, AND DRAINAGE LOT R AND LOT 2 OF BLOCK 8
 OF SHEPHERD HILLS SOUTH SUBDIVISION
 (formerly all of Drainage Lot of Block 8 of Shepherd Hills South Subdivision;
 the Unplatted Balance of the SW1/4 NW1/4 SE1/4 of Section 32, T2N, R8E;
 the Unplatted Balance of the N1/2 SW1/4 SE1/4 of Section 32, T2N, R8E;
 and a portion of the SE1/4 SE1/4 of Section 32, T2N, R8E;
 all Less Shepherd Hills Subdivision, Less Shepherd Hills South Subdivision and Less Right-of-Way)
 ALL IN THE SE1/4 OF SECTION 32, T2N, R8E, BHM,
 RAPID CITY, PENNINGTON COUNTY, SOUTH DAKOTA



CURVE TABLE					
CURVE	LENGTH	RADIUS	DELTA	CHORD BEARING	CHORD DISTANCE
C1 (R&M)	21.66	1039.00	001°11'40"	N71°55'03"E	21.86
C2	141.82	1562.00	005°12'07"	S22°18'43"E	141.77
C3	244.32	1562.00	008°57'43"	S29°23'38"E	244.07
C4 (R&M)	210.59	1462.00	008°15'12"	N39°39'46"W	210.41
C5 (R&M)	97.68	1462.00	002°49'41"	N49°09'05"W	97.86
C6	12.88	1462.00	000°30'18"	N51°19'10"W	12.88
C7	307.49	1462.00	012°03'02"	S57°35'49"E	306.92

LINE TABLE		
LINE #	LENGTH	DIRECTION
L1 (R&M)	21.06	N06°15'28"E
L2 (R&M)	14.27	S84°12'41"E
L3 (R&M)	39.59	S19°42'37"E
L4 (R&M)	13.94	S89°54'18"W
L5 (R&M)	13.50	S44°05'13"W
L6 (R&M)	16.85	N44°05'13"E
L7 (R&M)	7.50	N45°25'47"W
L8 (R&M)	6.71	N44°05'13"E



LEGEND
 ● DENOTES SET 1 1/4" PC MARKED "KTM-9961"
 ● DENOTES FOUND SURVEY MONUMENT 1 1/4" PC MARKED "KTM-9961" UNLESS OTHERWISE NOTED
 (R) DENOTES RECORDED IN PREVIOUS PLAT OR DESCRIPTION.
 (M) DENOTES MEASURED IN THIS SURVEY.

UTILITY AND MINOR DRAINAGE EASEMENTS: 8' ON THE INTERIOR SIDES OF ALL LOT LINES, EXCEPT WHERE MAJOR DRAINAGE EASEMENTS LIE.

ANY MAJOR DRAINAGE EASEMENT SHOWN HEREON SHALL BE KEPT FREE OF ALL OBSTRUCTIONS INCLUDING BUT NOT LIMITED TO BUILDINGS, WALLS, FENCES, HEDGES, TREES AND SHRUBS. THESE EASEMENTS GRANT TO ALL PUBLIC AUTHORITIES THE RIGHT TO CONSTRUCT, OPERATE, MAINTAIN, INSPECT, AND REPAIR SUCH IMPROVEMENTS AND STRUCTURES AS IT DEEMS EXPEDIENT TO FACILITATE DRAINAGE FROM ANY SOURCE.

BASIS OF BEARINGS: BASIS OF BEARING IS CITY OF RAPID CONTROL NETWORK - SOUTH DAKOTA STATE PLANE SOUTH ZONE (NAD83-2011). MEASURED DISTANCES ARE ON SURFACE PROJECTION USING A COMBINED SCALE FACTOR FOR PROJECT OF 1.00021181

