



DOWNTOWN • 610 Quincy St. Rapid City, SD 57701 • (605) 394-6139 or (605) 394-4171

NORTH • 10 Van Buren St. Rapid City, SD 57701 • (605) 716-4098

Date: July 11, 2016  
To: Rapid City Public Library Board of Trustees  
From: Jennifer Read, Administrative and Facilities Coordinator  
Re: Monthly Financial Executive Summary  
Period Ending June 30, 2016

Rapid City Public Library's year to date fines and fees revenues, as reflected in [Figure 1](#), totaled \$25,554.33. This is a decrease of 24% compared to the previous year (2015).

1. Revenue from non-resident cards – A increase in revenue of 4% compared to last year. We currently have 489 non-county users registered.
2. Revenue from copies – There is an increase of 12% for copies this year compared to last year.
3. Revenue from fines – Decreased 36% from this point last year for a difference of \$7,093.63. The decreased amount is due to changes in the DVD policy as well as the total loan limit. We also do not collect fines on digital materials.
4. Revenue from meeting room fees – Increased \$150 from this time last year.
5. Revenue from 3D prints and proctoring – Revenue for these two items are \$687.94 and \$65 respectively.

Total expenditures and encumbrances<sup>1</sup> through June were \$1,822,991 as reflected in [Figure 2](#). With a budget established at \$3.8 million, approximately 46% was expended as of the end of June. (See [Table 1](#))

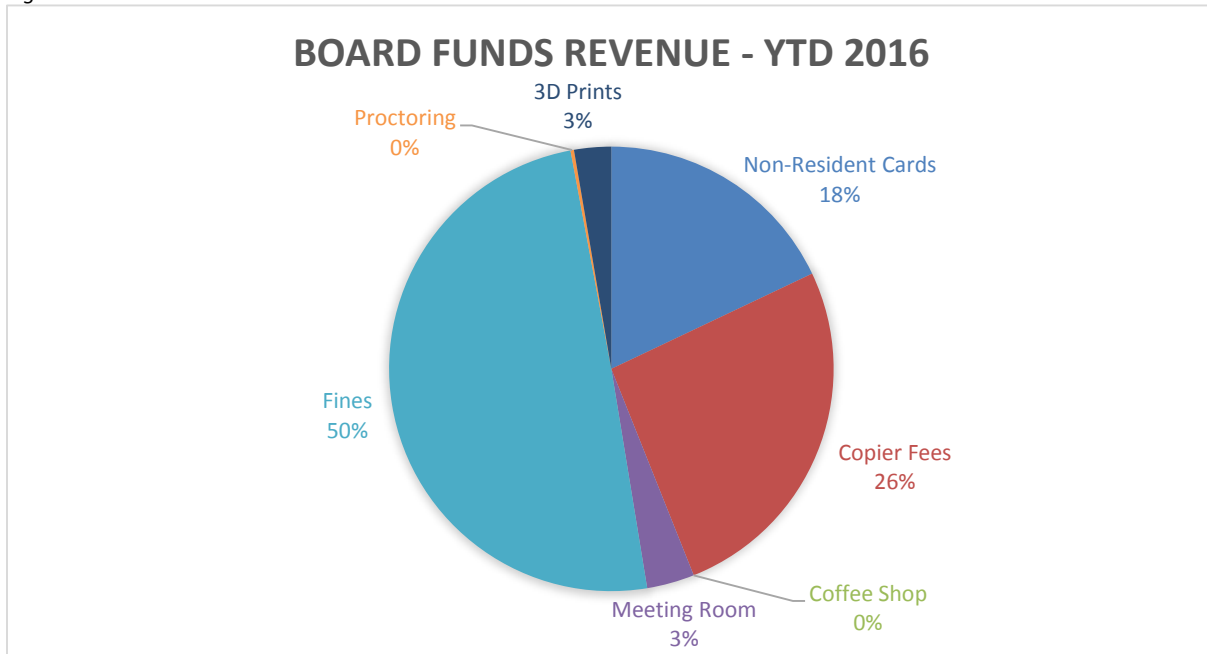
1. Salary, Wages and Benefits - Actual expenditures at the end of June 2016 for Salaries, Wages and Benefits totaled \$1,034,755. This is 5% lower than last year at this time.
2. Insurance – Expenses in these line items decreased by \$2,371 under the previous year. Actual expenditures in this line item are \$22,684.
3. Professional service expenditures – Increased 52% as compared to the prior year. Expenditures in this line item include facility maintenance services (i.e. window cleaning, HVAC maintenance and pest control), and security services. Security services were added towards the end of last year at the North Library.
4. Rentals – Increased \$5,106 since this time last year. Rentals include our costs for leased parking as well as equipment rentals and leased equipment. Our contract costs for copiers have increased over last year by about 3%, plus some costs from last year were carried over to this year's budget.
5. Repair & maintenance – Decreased 75% compared to the previous year. This line item is for repair costs of both the downtown facility (structure) and equipment, as well as the Integrated Library System. The new ILS, KOHA, is less cost than our previous Millenium service.

---

<sup>1</sup> Encumbrances: Obligations in the form of purchase orders, contracts or salary commitments which are chargeable to an appropriation and for which a part of the appropriation is reserved. Obligations cease to be encumbrances when paid or when the actual liability is set up.

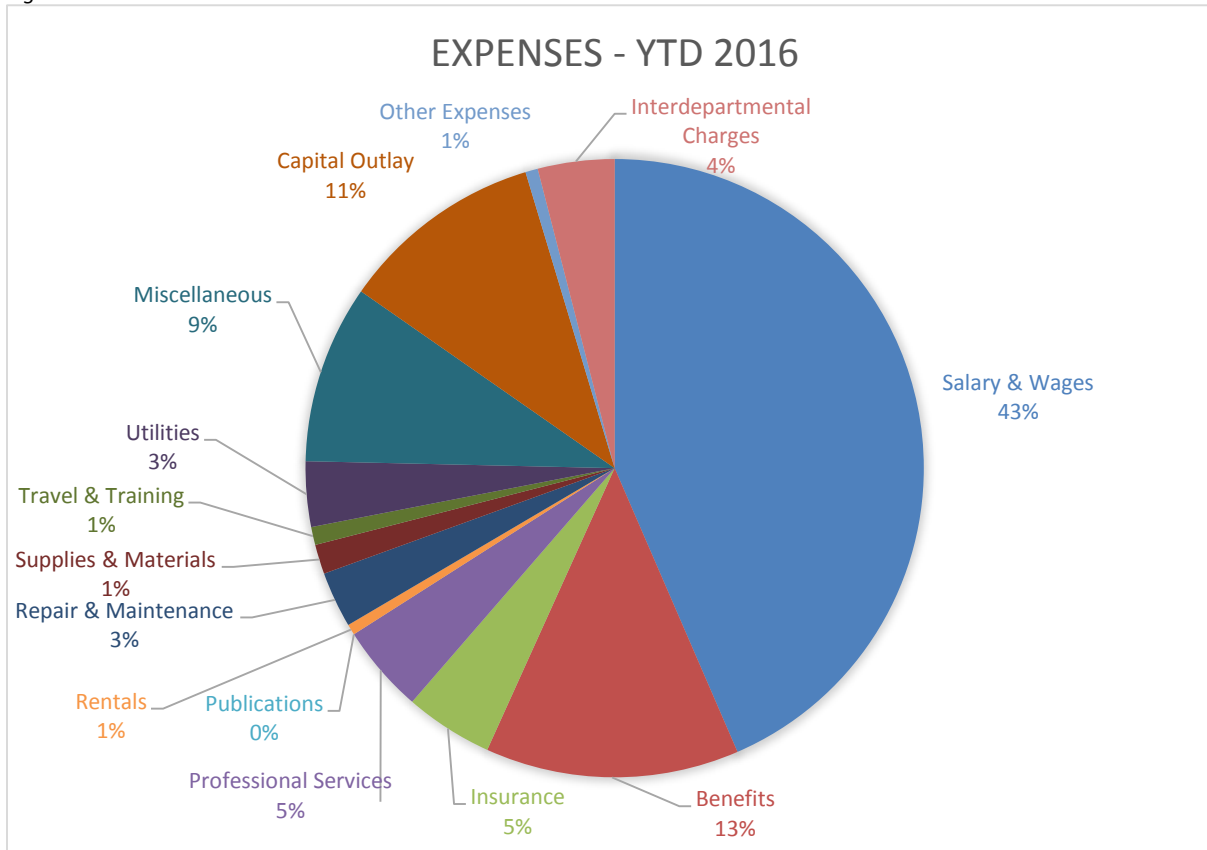
6. Supplies & materials – Increased 7% since this time in 2015. Purchases include office supplies, gasoline, facilities uniforms, janitorial supplies, tools, tires, and facility equipment. These purchases are made according to the replacement schedule.
7. Travel & Training – Total expenditures in this line item are \$17,138. Conferences and trainings are scheduled according to the travel and training plan.
8. Utilities – Increased \$20,786 compared to expenditures for this time last year. Utilities include telephone, internet, natural gas and electricity. The library is experiencing lower costs in electricity due to our energy saving initiatives, including the switching of monitoring of the HVAC to the Energy Plant. However, we have increased our bandwidth, which accounts for the higher costs in this line.
9. Miscellaneous – Increased 6% over 2015. Expenditures out of this line item include subscriptions to periodicals for patron browsing, programming materials, computers and software and office equipment and these are made according to the technology and equipment replacement schedule. This is an authorized line item name, and planned expenditures that don't fit in any other line item go here.
10. Capital Outlay – Increased 42% as compared to last year. This line item includes planned purchases for books and other library materials, as well as building improvements and vehicles.
11. Other expenses – Increased 225%, or \$8,195 over last year. This is a pass-thru line item for the Friends of the Library Book Sale area and does not affect the bottom line. The Friends of the Library Book Shop will now be open all hours the Library is open.

Figure 1



Total Revenues: \$25,554.33

Figure 2



Total Expenditures: \$1,822,991

Table 1

**YTD Expense Comparison  
as of 6/30/16**

	YTD '15	YTD '16	More or (Less) than 2015	% +/-
Salary & Wages	989,747	792,946	(196,801)	-20%
Benefits	96,139	241,809	145,670	152%
Insurance	25,055	22,684	(2,371)	-9%
Professional Services	55,284	83,963	28,679	52%
Rentals	5,131	10,237	5,106	100%
Repair & Maintenance	212,469	53,302	(159,167)	-75%
Supplies & Materials	26,392	28,226	1,834	7%
Travel & Training	7,728	17,138	9,410	122%
Utilities	41,407	62,193	20,786	50%
Miscellaneous	161,165	170,102	8,937	6%
Capital Outlay	137,147	194,229	57,082	42%
Other Expenses	3,645	11,840	8,195	225%

Table 2

**Monthly Vacancy Status Report  
as of 6/30/16**

LIBRARY DEPARTMENT	FULL AND PART-TIME POSITIONS	FULL AND PART-TIME EMPLOYEES	VACANCIES
Management	2	2	-
Librarian Is	3	3	-
Managers	1	1	-
Coordinators	3	3	-
Business Office	2	1	1
Facilities	3	3	-
Library Associates	17	15	2
Customer Service			
Specialists	5	4	1
Outreach	6	4	2
<b>TOTALS</b>	<b>42</b>	<b>36</b>	<b>6</b>

*NOTE: Data excludes temporary classifications.*

Year to Date Expense Report  
as of 06/30/16

Dept. 0609, 0610, 0971

	Total Year To			
	Date			
	Current Year Working Budget	Encumbrance and Expense	Remaining Budget Balance	Percent Budget Remaining
4110 Salary & Wages	\$ 1,612,986	\$ 776,302	\$ 60,165	4%
4111 Overtime Wages	-	1,766	(1,766)	0%
4118 Temporary Wages	31,481	14,878	16,603	53%
4100 Salary & Wages	1,644,467	792,946	851,521	52%
4120 Social Security	101,610	46,597	55,013	54%
4121 Medicare	23,763	10,898	12,865	54%
4130 Retirement	96,443	57,097	39,346	41%
4131 Section 125 Administration	1,110	236	874	79%
4140 Workmens Comp	3,475	3,054	421	12%
4150 Group Health Insurance	194,564	123,093	71,471	37%
4155 Group Life Insurance	1,803	834	969	54%
4170 Unemployment Insurance	1,599	-	1,599	100%
4110 Benefits	424,367	241,809	182,558	43%
4211 General & Auto Liability	6,864	4,552	2,312	34%
4212 Boiler Coverage	1,506	-	1,506	100%
4214 Other Insurance	22,660	18,132	4,528	20%
4210 Insurance	31,030	22,684	8,346	27%
4223 Consultant Services	21,260	16,960	4,300	20%
4225 Other Professional Services	113,602	67,003	46,599	41%
4229 Marketing	1,135	-	1,135	100%
4220 Professional Services	135,997	83,963	52,034	38%
4230 Publishing	1,026	-	1,026	100%
4230 Publications	1,026	-	1,026	100%
4243 Machinery Rentals	4,189	-	4,189	100%
4244 Lease/Purchases	14,250	8,221	6,029	42%
4246 Other Rentals	3,581	2,016	1,565	44%
4240 Rentals	22,020	10,237	11,783	54%
4251 Repair - Roll Stock	1,571	304	1,267	81%
4252 Repair - Structures	43,797	13,118	30,679	70%
4253 Repair - Equipment	28,852	7,551	21,301	74%
4255 Repair - Water & Sewer	641	-	641	100%
4259 Miscellaneous	92,224	32,329	59,895	65%
4250 Repair & Maintenance	167,085	53,302	113,783	68%
4261 Office Supplies	42,210	19,755	22,455	53%
4262 Gasoline, Oil, Fuel	2,584	692	1,892	73%
4263 Clothing, Food	1,514	483	1,031	68%
4264 Janitor & Chemical Supplies	25,901	7,157	18,744	72%
4265 Minor Tools	4,200	119	4,081	97%
4266 Agricultural Supply	-	-	-	0%
4267 Tires	800	-	800	100%
4269 Misc Supplies & Materials	-	20	(20)	0%
4260 Supplies & Materials	77,209	28,226	48,983	63%
4270 Travel & Training	22,310	17,138	5,172	23%
4270 Travel & Training	22,310	17,138	5,172	23%
4281 Telephone - Local	46,440	12,578	33,862	73%
4282 Natural Gas	18,053	9,964	8,089	45%
4283 Electricity	106,206	39,233	66,973	63%
4287 Drainage Fees	-	418	(418)	0%
4280 Utilities	170,699	62,193	108,506	64%
4292 Dues	2,501	1,089	1,412	56%
4293 Subscriptions	92,338	77,363	14,975	16%
4294 Other Miscellaneous Expenses	25,696	18,354	7,342	29%
4295 Computers & Software	176,860	60,438	116,422	66%
4296 Office Equipment	33,727	12,858	20,869	62%
4290 Miscellaneous	331,122	170,102	161,020	49%
4320 Buildings & Structures	94,735	-	94,735	100%
4341 General Materials	165,460	72,998	92,462	56%
4342 Books/AV Processing	19,124	7,983	11,141	58%
4345 Electronic Resources	138,946	63,689	75,257	54%
4346 DVDs	34,901	17,096	17,805	51%
4348 Interactive Materials	-	3,574	(3,574)	0%
4350 Furniture & Minor Equipment	45,700	-	45,700	100%
4360 Library Machinery	125,000	28,889	96,111	77%
4390 Library Other Capital	-	-	-	0%
4300 Capital Outlay	623,866	194,229	429,637	69%
4530 Refund or Reimbursement	17,046	11,840	5,206	31%
4500 Other Expenses	17,046	11,840	5,206	31%
<b>*SUB-TOTAL</b>	<b>3,668,244</b>	<b>1,688,669</b>	<b>1,979,575</b>	<b>54%</b>
4226 Interdepartmental Charges	139,841	73,043	66,798	48%
4226 Interdepartmental Charges	139,841	73,043	66,798	48%
<b>*SUB-TOTAL</b>	<b>3,808,085</b>	<b>1,761,712</b>	<b>2,046,373</b>	<b>54%</b>
<b>**Total LIBRARY</b>	<b>\$ 3,808,085</b>	<b>\$ 1,761,712</b>	<b>\$ 2,046,373</b>	<b>54%</b>

The City of Rapid City  
Bill List by Vendor - Detail

Vendor #	Invoice #	PO #	Vendor Name	GL Account	Line Item Description	Line Item Amount
7810	1605.4	40825	ACV2 ARCHITECTURE LLC	10100609-422500	DESIGN SERVICES	3,180.00
					ACV2 ARCHITECTURE LLC Total:	3,180.00
170	038095595693	42142	AMAZON.COM CREDIT	10100609-434100	GENERAL MATERIALS	24.11
	170125329235	42141	AMAZON.COM CREDIT	10100609-434100	GENERAL MATERIALS	11.55
	229001420803	37556	AMAZON.COM CREDIT	10100609-434100	GENERAL MATERIALS	4.00
	114228525381	37559	AMAZON.COM CREDIT	10100609-434100	GENERAL MATERIALS	89.33
	186486319997	37555	AMAZON.COM CREDIT	10100609-434100	GENERAL MATERIALS	6.94
	217987078412	37551	AMAZON.COM CREDIT	10100609-434100	GENERAL MATERIALS	9.99
	002870185338	37558	AMAZON.COM CREDIT	10100609-434100	GENERAL MATERIALS	13.03
	056766953413	37552	AMAZON.COM CREDIT	10100609-434100	GENERAL MATERIALS	78.18
	194605368045	38488	AMAZON.COM CREDIT	10100609-434100	GENERAL MATERIALS	93.84
	194601956750	38488	AMAZON.COM CREDIT	10100609-434100	GENERAL MATERIALS	234.00
	005072840971	38485	AMAZON.COM CREDIT	10100609-434100	GENERAL MATERIALS	8.74
	207038516218	38487	AMAZON.COM CREDIT	10100609-434100	GENERAL MATERIALS	16.49
	189204342346	38489	AMAZON.COM CREDIT	10100609-434100	GENERAL MATERIALS	4.42
	007901727586	38486	AMAZON.COM CREDIT	10100609-434100	GENERAL MATERIALS	8.93

170	130720526021	38490	AMAZON.COM CREDIT	10100609-434100	GENERAL MATERIALS	40.03
	038092528385		AMAZON.COM CREDIT	10100609-434100	CR PRE-ORDER PRICE PROTECTION RFD	(0.32)
	223169208064	38921	AMAZON.COM CREDIT	10100609-434100	GENERAL MATERIALS	31.78
	176533625982	38919	AMAZON.COM CREDIT	10100609-434100	GENERAL MATERIALS	20.76
	249303129330	38918	AMAZON.COM CREDIT	10100609-434100	GENERAL MATERIALS	7.59
	249303129330	38918	AMAZON.COM CREDIT	10100609-434200	GENERAL MATERIALS	3.99
	102887939540	38917	AMAZON.COM CREDIT	10100609-434100	GENERAL MATERIALS	14.59
	223168474505	38921	AMAZON.COM CREDIT	10100609-434100	GENERAL MATERIALS	121.07
	004876959564	38920	AMAZON.COM CREDIT	10100609-434100	GENERAL MATERIALS	25.00
	001791613527	38945	AMAZON.COM CREDIT	10100609-434100	GENERAL MATERIALS	11.63
	126733412945	38946	AMAZON.COM CREDIT	10100609-434100	GENERAL MATERIALS	4.19
	027605523604	39827	AMAZON.COM CREDIT	10100609-434100	GENERAL MATERIALS	9.94
	050493322026	40587	AMAZON.COM CREDIT	10100609-434100	GENERAL MATERIALS	21.76
	057022826445	39708	AMAZON.COM CREDIT	10100609-434100	GENERAL MATERIALS	25.94
	239675349101	39798	AMAZON.COM CREDIT	10100609-434100	GENERAL MATERIALS	70.00
	239675349101	39798	AMAZON.COM CREDIT	10100609-434200	GENERAL MATERIALS	7.98
	185027522728	39706	AMAZON.COM CREDIT	10100609-434100	GENERAL MATERIALS	9.50
	185027522728	39706	AMAZON.COM CREDIT	10100609-434200	GENERAL MATERIALS	3.99
	151604818524	39797	AMAZON.COM CREDIT	10100609-434100	GENERAL MATERIALS	50.00

170	151604818524	39797	AMAZON.COM CREDIT	10100609-434200	GENERAL MATERIALS	3.99
	225991816418	39707	AMAZON.COM CREDIT	10100609-434100	GENERAL MATERIALS	18.99
	170282667838	40585	AMAZON.COM CREDIT	10100609-434100	GENERAL MATERIALS	25.94
	208936756283	42259	AMAZON.COM CREDIT	10100609-434100	GENERAL MATERIALS	35.90
	208939685959	42259	AMAZON.COM CREDIT	10100609-434100	GENERAL MATERIALS	16.95
	114094825311	39799	AMAZON.COM CREDIT	10100609-434100	GENERAL MATERIALS	83.15
	022382029431	42260	AMAZON.COM CREDIT	10100609-434100	GENERAL MATERIALS	9.35
	212316807250	42261	AMAZON.COM CREDIT	10100609-434100	GENERAL MATERIALS	8.89
	162485901131	42258	AMAZON.COM CREDIT	10100609-434100	GENERAL MATERIALS	22.75
	270703228369	42150	AMAZON.COM CREDIT	10100609-434100	GENERAL MATERIALS	12.95
	270706409363	42150	AMAZON.COM CREDIT	10100609-434100	GENERAL MATERIALS	50.09
	270701881301	42150	AMAZON.COM CREDIT	10100609-434100	GENERAL MATERIALS	34.22
	213011741536	42145	AMAZON.COM CREDIT	10100609-434100	GENERAL MATERIALS	43.98
	022223412925	42148	AMAZON.COM CREDIT	10100609-434100	GENERAL MATERIALS	95.28
	192771562137	42144	AMAZON.COM CREDIT	10100609-434100	GENERAL MATERIALS	8.97
	250833713280	42143	AMAZON.COM CREDIT	10100609-434100	GENERAL MATERIALS	19.48
	102249902601	42149	AMAZON.COM CREDIT	10100609-434800	GENERAL MATERIALS	84.41
	236748311655	42146	AMAZON.COM CREDIT	10100609-434100	GENERAL MATERIALS	5.94
	075651920554	42147	AMAZON.COM CREDIT	10100609-434100	GENERAL MATERIALS	86.47



170	022229206168	42148	AMAZON.COM CREDIT	10100609-434100	GENERAL MATERIALS	7.99
	102244340116	42149	AMAZON.COM CREDIT	10100609-434800	GENERAL MATERIALS	218.86
	239674856182		AMAZON.COM CREDIT	10100609-434100	CR SHIPPING RFD	(3.99)
					AMAZON.COM CREDIT Total:	1,973.53
356	2032047825	41250	BAKER & TAYLOR BOOKS	10100609-434100	PRINT MATERIALS	389.53
	2032047825	41250	BAKER & TAYLOR BOOKS	10100609-434200	PRINT MATERIALS	8.60
	2032044932	41279	BAKER & TAYLOR BOOKS	10100609-434100	GENERAL MATERIALS	56.10
	2032044932	41279	BAKER & TAYLOR BOOKS	10100609-434200	GENERAL MATERIALS	5.00
	2032044931	41276	BAKER & TAYLOR BOOKS	10100609-434100	GENERAL MATERIALS	79.90
	2032044931	41276	BAKER & TAYLOR BOOKS	10100609-434200	GENERAL MATERIALS	2.90
	2032044930	41275	BAKER & TAYLOR BOOKS	10100609-434100	GENERAL MATERIALS	29.65
	2032044930	41275	BAKER & TAYLOR BOOKS	10100609-434200	GENERAL MATERIALS	3.15
	2032044929	41278	BAKER & TAYLOR BOOKS	10100609-434100	GENERAL MATERIALS	18.64
	2032044929	41278	BAKER & TAYLOR BOOKS	10100609-434200	GENERAL MATERIALS	0.40
	2032044927	41274	BAKER & TAYLOR BOOKS	10100609-434100	GENERAL MATERIALS	9.51
	2032044927	41274	BAKER & TAYLOR BOOKS	10100609-434200	GENERAL MATERIALS	1.05
	2032044926	41273	BAKER & TAYLOR BOOKS	10100609-434100	GENERAL MATERIALS	22.88
	2032044926	41273	BAKER & TAYLOR BOOKS	10100609-434200	GENERAL MATERIALS	1.45
	2032044925	41272	BAKER & TAYLOR BOOKS	10100609-434100	GENERAL MATERIALS	14.56
	2032044925	41272	BAKER & TAYLOR BOOKS	10100609-434200	GENERAL MATERIALS	1.05

356	2032044924	41271	BAKER & TAYLOR BOOKS	10100609-434100	GENERAL MATERIALS	94.08
	2032044924	41271	BAKER & TAYLOR BOOKS	10100609-434200	GENERAL MATERIALS	2.90
	2032044923	41270	BAKER & TAYLOR BOOKS	10100609-434100	GENERAL MATERIALS	58.76
	2032044923	41270	BAKER & TAYLOR BOOKS	10100609-434200	GENERAL MATERIALS	4.05
	2032044922	41269	BAKER & TAYLOR BOOKS	10100609-434100	GENERAL MATERIALS	26.55
	2032044922	41269	BAKER & TAYLOR BOOKS	10100609-434200	GENERAL MATERIALS	1.30
	2032044921	41268	BAKER & TAYLOR BOOKS	10100609-434100	GENERAL MATERIALS	44.23
	2032044921	41268	BAKER & TAYLOR BOOKS	10100609-434200	GENERAL MATERIALS	3.15
	2032044933	41266	BAKER & TAYLOR BOOKS	10100609-434100	GENERAL MATERIALS	50.39
	2032044933	41266	BAKER & TAYLOR BOOKS	10100609-434200	GENERAL MATERIALS	1.20
	2032050498	41233	BAKER & TAYLOR BOOKS	10100609-434100	GENERAL MATERIALS	322.45
	2032050498	41233	BAKER & TAYLOR BOOKS	10100609-434200	GENERAL MATERIALS	7.45
	2032041730	41238	BAKER & TAYLOR BOOKS	10100609-434100	GENERAL MATERIALS	8.97
	2032041730	41238	BAKER & TAYLOR BOOKS	10100609-434200	GENERAL MATERIALS	0.25
	2032041731	41242	BAKER & TAYLOR BOOKS	10100609-434100	GENERAL MATERIALS	15.12
	2032041731	41242	BAKER & TAYLOR BOOKS	10100609-434200	GENERAL MATERIALS	1.05
	2032041732	41239	BAKER & TAYLOR BOOKS	10100609-434100	GENERAL MATERIALS	30.39
	2032041732	41239	BAKER & TAYLOR BOOKS	10100609-434200	GENERAL MATERIALS	1.05
	2032041733	41243	BAKER & TAYLOR BOOKS	10100609-434100	GENERAL MATERIALS	10.07

356	2032041733	41243	BAKER & TAYLOR BOOKS	10100609-434200	GENERAL MATERIALS	1.05
	2032041734	41245	BAKER & TAYLOR BOOKS	10100609-434100	GENERAL MATERIALS	15.11
	2032041734	41245	BAKER & TAYLOR BOOKS	10100609-434200	GENERAL MATERIALS	0.90
	2032041735	41244	BAKER & TAYLOR BOOKS	10100609-434100	GENERAL MATERIALS	9.49
	2032041735	41244	BAKER & TAYLOR BOOKS	10100609-434200	GENERAL MATERIALS	0.40
	2032041736	41246	BAKER & TAYLOR BOOKS	10100609-434100	GENERAL MATERIALS	11.39
	2032041736	41246	BAKER & TAYLOR BOOKS	10100609-434200	GENERAL MATERIALS	0.25
	2032041737	41248	BAKER & TAYLOR BOOKS	10100609-434100	GENERAL MATERIALS	22.40
	2032041737	41248	BAKER & TAYLOR BOOKS	10100609-434200	GENERAL MATERIALS	0.40
	2032041739	41249	BAKER & TAYLOR BOOKS	10100609-434100	GENERAL MATERIALS	51.47
	2032041739	41249	BAKER & TAYLOR BOOKS	10100609-434200	GENERAL MATERIALS	4.80
	2032041727	41252	BAKER & TAYLOR BOOKS	10100609-434100	GENERAL MATERIALS	87.07
	2032041727	41252	BAKER & TAYLOR BOOKS	10100609-434200	GENERAL MATERIALS	5.75
	2032041729	41253	BAKER & TAYLOR BOOKS	10100609-434100	GENERAL MATERIALS	126.56
	2032041729	41253	BAKER & TAYLOR BOOKS	10100609-434200	GENERAL MATERIALS	8.65
	2032032802	42016	BAKER & TAYLOR BOOKS	10100609-434100	GENERAL MATERIALS	227.65
	2032032802	42016	BAKER & TAYLOR BOOKS	10100609-434200	GENERAL MATERIALS	9.45
	2032047817	41234	BAKER & TAYLOR BOOKS	10100609-434100	GENERAL MATERIALS	55.60
	2032047817	41234	BAKER & TAYLOR BOOKS	10100609-434200	GENERAL MATERIALS	2.90

356	2032047820	41035	BAKER & TAYLOR BOOKS	10100609-434100	PRINT MATERIALS	15.12
	2032047820	41035	BAKER & TAYLOR BOOKS	10100609-434200	PRINT MATERIALS	1.05
	2032047821	41038	BAKER & TAYLOR BOOKS	10100609-434100	PRINT MATERIALS	10.07
	2032047821	41038	BAKER & TAYLOR BOOKS	10100609-434200	PRINT MATERIALS	0.90
	2032047823	41037	BAKER & TAYLOR BOOKS	10100609-434100	PRINT MATERIALS	20.14
	2032047823	41037	BAKER & TAYLOR BOOKS	10100609-434200	PRINT MATERIALS	2.10
	2032047816	41041	BAKER & TAYLOR BOOKS	10100609-434100	PRINT MATERIALS	30.80
	2032047816	41041	BAKER & TAYLOR BOOKS	10100609-434200	PRINT MATERIALS	2.10
	2032047818	41043	BAKER & TAYLOR BOOKS	10100609-434100	PRINT MATERIALS	111.05
	2032047818	41043	BAKER & TAYLOR BOOKS	10100609-434200	PRINT MATERIALS	6.55
	2032032800	42017	BAKER & TAYLOR BOOKS	10100609-434100	GENERAL MATERIALS	44.24
	2032032800	42017	BAKER & TAYLOR BOOKS	10100609-434200	GENERAL MATERIALS	3.15
	2032032798	42019	BAKER & TAYLOR BOOKS	10100609-434100	GENERAL MATERIALS	15.12
	2032032798	42019	BAKER & TAYLOR BOOKS	10100609-434200	GENERAL MATERIALS	1.05
	2032032797	42020	BAKER & TAYLOR BOOKS	10100609-434100	GENERAL MATERIALS	15.09
	2032032797	42020	BAKER & TAYLOR BOOKS	10100609-434200	GENERAL MATERIALS	1.05
	2032023066	42018	BAKER & TAYLOR BOOKS	10100609-434100	GENERAL MATERIALS	302.75
	2032023066	42018	BAKER & TAYLOR BOOKS	10100609-434200	GENERAL MATERIALS	13.55
	2032023065	42021	BAKER & TAYLOR BOOKS	10100609-434100	GENERAL MATERIALS	99.23

356	2032023065	42021	BAKER & TAYLOR BOOKS	10100609-434200	GENERAL MATERIALS	5.65
	2032023064	42022	BAKER & TAYLOR BOOKS	10100609-434100	GENERAL MATERIALS	82.21
	2032023064	42022	BAKER & TAYLOR BOOKS	10100609-434200	GENERAL MATERIALS	4.25
	2032023063	42023	BAKER & TAYLOR BOOKS	10100609-434100	GENERAL MATERIALS	66.93
	2032023063	42023	BAKER & TAYLOR BOOKS	10100609-434200	GENERAL MATERIALS	5.35
	2032023062	42024	BAKER & TAYLOR BOOKS	10100609-434100	GENERAL MATERIALS	145.66
	2032023062	42024	BAKER & TAYLOR BOOKS	10100609-434200	GENERAL MATERIALS	4.75
	2032023060	42025	BAKER & TAYLOR BOOKS	10100609-434100	GENERAL MATERIALS	10.26
	2032023060	42025	BAKER & TAYLOR BOOKS	10100609-434200	GENERAL MATERIALS	0.25
	2032032803	42325	BAKER & TAYLOR BOOKS	10100609-434100	GENERAL MATERIALS	9.00
	2032032803	42325	BAKER & TAYLOR BOOKS	10100609-434200	GENERAL MATERIALS	0.25
	2032032804	42324	BAKER & TAYLOR BOOKS	10100609-434100	GENERAL MATERIALS	30.49
	2032032804	42324	BAKER & TAYLOR BOOKS	10100609-434200	GENERAL MATERIALS	0.80
	2032032805	42323	BAKER & TAYLOR BOOKS	10100609-434100	GENERAL MATERIALS	10.07
	2032032805	42323	BAKER & TAYLOR BOOKS	10100609-434200	GENERAL MATERIALS	1.05
	2032032806	42322	BAKER & TAYLOR BOOKS	10100609-434100	GENERAL MATERIALS	15.68
	2032032806	42322	BAKER & TAYLOR BOOKS	10100609-434200	GENERAL MATERIALS	1.05
	2032032808	42321	BAKER & TAYLOR BOOKS	10100609-434100	GENERAL MATERIALS	14.21
	2032032808	42321	BAKER & TAYLOR BOOKS	10100609-434200	GENERAL MATERIALS	1.05

356	2032032807	42320	BAKER & TAYLOR BOOKS	10100609-434100	GENERAL MATERIALS	10.17
	2032032807	42320	BAKER & TAYLOR BOOKS	10100609-434200	GENERAL MATERIALS	0.25
	2032032810	42319	BAKER & TAYLOR BOOKS	10100609-434100	GENERAL MATERIALS	7.10
	2032032810	42319	BAKER & TAYLOR BOOKS	10100609-434200	GENERAL MATERIALS	0.25
	2032032811	42318	BAKER & TAYLOR BOOKS	10100609-434100	GENERAL MATERIALS	40.84
	2032032811	42318	BAKER & TAYLOR BOOKS	10100609-434200	GENERAL MATERIALS	4.20
	2032032812	42317	BAKER & TAYLOR BOOKS	10100609-434100	GENERAL MATERIALS	199.57
	2032032812	42317	BAKER & TAYLOR BOOKS	10100609-434200	GENERAL MATERIALS	4.55
	2032041726	42316	BAKER & TAYLOR BOOKS	10100609-434100	GENERAL MATERIALS	17.96
	2032041726	42316	BAKER & TAYLOR BOOKS	10100609-434200	GENERAL MATERIALS	0.25
	2032050958	42315	BAKER & TAYLOR BOOKS	10100609-434200	GENERAL MATERIALS	1.05
	2032050958	42315	BAKER & TAYLOR BOOKS	10100610-434100	GENERAL MATERIALS	15.68
	2032050961	42314	BAKER & TAYLOR BOOKS	10100609-434100	GENERAL MATERIALS	20.74
	2032050961	42314	BAKER & TAYLOR BOOKS	10100609-434200	GENERAL MATERIALS	0.40
	2032050960	42313	BAKER & TAYLOR BOOKS	10100610-434200	GENERAL MATERIALS	16.73
	2032050962	42312	BAKER & TAYLOR BOOKS	10100610-434100	GENERAL MATERIALS	7.79
	2032050962	42312	BAKER & TAYLOR BOOKS	10100610-434200	GENERAL MATERIALS	0.40
	2032050963	42311	BAKER & TAYLOR BOOKS	10100610-434100	GENERAL MATERIALS	230.41
	2032050963	42311	BAKER & TAYLOR BOOKS	10100610-434200	GENERAL MATERIALS	19.90

356	2032050964	42310	BAKER & TAYLOR BOOKS	10100610-434100	GENERAL MATERIALS	69.65
	2032050964	42310	BAKER & TAYLOR BOOKS	10100610-434200	GENERAL MATERIALS	3.30
	2032050965	42309	BAKER & TAYLOR BOOKS	10100610-434100	GENERAL MATERIALS	418.92
	2032050965	42309	BAKER & TAYLOR BOOKS	10100610-434200	GENERAL MATERIALS	31.90
	2032060512	42308	BAKER & TAYLOR BOOKS	10100610-434100	GENERAL MATERIALS	72.19
	2032060512	42308	BAKER & TAYLOR BOOKS	10100610-434200	GENERAL MATERIALS	5.25
	2032060513	42307	BAKER & TAYLOR BOOKS	10100610-434100	GENERAL MATERIALS	12.88
	2032060513	42307	BAKER & TAYLOR BOOKS	10100610-434200	GENERAL MATERIALS	1.05
	2032060515	42306	BAKER & TAYLOR BOOKS	10100610-434100	GENERAL MATERIALS	9.59
	2032060515	42306	BAKER & TAYLOR BOOKS	10100610-434200	GENERAL MATERIALS	0.40
	2032060516	42305	BAKER & TAYLOR BOOKS	10100610-434100	GENERAL MATERIALS	16.19
	2032060516	42305	BAKER & TAYLOR BOOKS	10100610-434200	GENERAL MATERIALS	0.25
	2032060517	42304	BAKER & TAYLOR BOOKS	10100610-434100	GENERAL MATERIALS	9.51
	2032060517	42304	BAKER & TAYLOR BOOKS	10100610-434200	GENERAL MATERIALS	1.05
	2032060518	42303	BAKER & TAYLOR BOOKS	10100610-434100	GENERAL MATERIALS	15.99
	2032060518	42303	BAKER & TAYLOR BOOKS	10100610-434200	GENERAL MATERIALS	0.40
	2032060519	42302	BAKER & TAYLOR BOOKS	10100610-434100	GENERAL MATERIALS	10.07
	2032060519	42302	BAKER & TAYLOR BOOKS	10100610-434200	GENERAL MATERIALS	1.05
	2032060520	42301	BAKER & TAYLOR BOOKS	10100610-434100	GENERAL MATERIALS	15.67

356	2032060520	42301	BAKER & TAYLOR BOOKS	10100610-434200	GENERAL MATERIALS	1.05
	2032060521	42300	BAKER & TAYLOR BOOKS	10100610-434100	GENERAL MATERIALS	17.39
	2032060521	42300	BAKER & TAYLOR BOOKS	10100610-434200	GENERAL MATERIALS	0.40
	2032060522	42299	BAKER & TAYLOR BOOKS	10100610-434100	GENERAL MATERIALS	9.51
	2032060522	42299	BAKER & TAYLOR BOOKS	10100610-434200	GENERAL MATERIALS	0.90
	2032060523	42298	BAKER & TAYLOR BOOKS	10100610-434100	GENERAL MATERIALS	15.20
	2032060523	42298	BAKER & TAYLOR BOOKS	10100610-434200	GENERAL MATERIALS	0.40
	2032060524	42297	BAKER & TAYLOR BOOKS	10100610-434100	GENERAL MATERIALS	11.39
	2032060524	42297	BAKER & TAYLOR BOOKS	10100610-434200	GENERAL MATERIALS	0.40
	2032050959	42296	BAKER & TAYLOR BOOKS	10100610-434100	GENERAL MATERIALS	16.80
	2032050959	42296	BAKER & TAYLOR BOOKS	10100610-434200	GENERAL MATERIALS	1.05
	2032060514	42295	BAKER & TAYLOR BOOKS	10100610-434100	GENERAL MATERIALS	35.43
	2032060514	42295	BAKER & TAYLOR BOOKS	10100610-434200	GENERAL MATERIALS	1.85
	2032032799	42268	BAKER & TAYLOR BOOKS	10100609-434200	GENERAL MATERIALS	17.82
	2032023061	42267	BAKER & TAYLOR BOOKS	10100609-434100	GENERAL MATERIALS	3.59
	2032023061	42267	BAKER & TAYLOR BOOKS	10100609-434200	GENERAL MATERIALS	0.40
	2032060525	42204	BAKER & TAYLOR BOOKS	10100610-434100	GENERAL MATERIALS	57.72
	2032060525	42204	BAKER & TAYLOR BOOKS	10100610-434200	GENERAL MATERIALS	3.15
	2032032809	42203	BAKER & TAYLOR BOOKS	10100609-434100	GENERAL MATERIALS	83.67



356	2032032809	42203	BAKER & TAYLOR BOOKS	10100609-434200	GENERAL MATERIALS	1.45
	2032060526	42202	BAKER & TAYLOR BOOKS	10100610-434100	GENERAL MATERIALS	20.29
	2032060526	42202	BAKER & TAYLOR BOOKS	10100610-434200	GENERAL MATERIALS	0.80
	2032060527	42201	BAKER & TAYLOR BOOKS	10100610-434100	GENERAL MATERIALS	72.12
	2032060527	42201	BAKER & TAYLOR BOOKS	10100610-434200	GENERAL MATERIALS	4.20
	2032060529	42200	BAKER & TAYLOR BOOKS	10100610-434100	GENERAL MATERIALS	14.21
	2032060529	42200	BAKER & TAYLOR BOOKS	10100610-434200	GENERAL MATERIALS	1.05
	2032060530	42199	BAKER & TAYLOR BOOKS	10100610-434100	GENERAL MATERIALS	59.69
	2032060530	42199	BAKER & TAYLOR BOOKS	10100610-434200	GENERAL MATERIALS	3.60
	2032060531	42198	BAKER & TAYLOR BOOKS	10100610-434100	GENERAL MATERIALS	65.51
	2032060531	42198	BAKER & TAYLOR BOOKS	10100610-434200	GENERAL MATERIALS	3.85
	2032014631	42197	BAKER & TAYLOR BOOKS	10100610-434100	GENERAL MATERIALS	71.06
	2032014631	42197	BAKER & TAYLOR BOOKS	10100610-434200	GENERAL MATERIALS	5.25
	2032014632	42196	BAKER & TAYLOR BOOKS	10100610-434100	GENERAL MATERIALS	15.68
	2032014632	42196	BAKER & TAYLOR BOOKS	10100610-434200	GENERAL MATERIALS	1.05
	2032014633	42195	BAKER & TAYLOR BOOKS	10100610-434100	GENERAL MATERIALS	118.21
	2032014633	42195	BAKER & TAYLOR BOOKS	10100610-434200	GENERAL MATERIALS	5.10
	2032014634	42194	BAKER & TAYLOR BOOKS	10100610-434100	GENERAL MATERIALS	28.49
	2032014634	42194	BAKER & TAYLOR BOOKS	10100610-434200	GENERAL MATERIALS	0.40

356	2032014635	42193	BAKER & TAYLOR BOOKS	10100610-434100	GENERAL MATERIALS	87.34
	2032014635	42193	BAKER & TAYLOR BOOKS	10100610-434200	GENERAL MATERIALS	3.05
	2032014636	42192	BAKER & TAYLOR BOOKS	10100610-434100	GENERAL MATERIALS	112.57
	2032014636	42192	BAKER & TAYLOR BOOKS	10100610-434200	GENERAL MATERIALS	7.50
	2032014637	42191	BAKER & TAYLOR BOOKS	10100610-434100	GENERAL MATERIALS	9.51
	2032014637	42191	BAKER & TAYLOR BOOKS	10100610-434200	GENERAL MATERIALS	1.05
	2032014638	42190	BAKER & TAYLOR BOOKS	10100610-434100	GENERAL MATERIALS	9.51
	2032014638	42190	BAKER & TAYLOR BOOKS	10100610-434200	GENERAL MATERIALS	1.05
	2032014639	42189	BAKER & TAYLOR BOOKS	10100610-434100	GENERAL MATERIALS	10.63
	2032014639	42189	BAKER & TAYLOR BOOKS	10100610-434200	GENERAL MATERIALS	1.05
	2032014640	42188	BAKER & TAYLOR BOOKS	10100610-434100	GENERAL MATERIALS	10.07
	2032014640	42188	BAKER & TAYLOR BOOKS	10100610-434200	GENERAL MATERIALS	1.05
	2032014641	42187	BAKER & TAYLOR BOOKS	10100610-434100	GENERAL MATERIALS	16.10
	2032014641	42187	BAKER & TAYLOR BOOKS	10100610-434200	GENERAL MATERIALS	0.25
	2032014642	42186	BAKER & TAYLOR BOOKS	10100610-434100	GENERAL MATERIALS	14.24
	2032014642	42186	BAKER & TAYLOR BOOKS	10100610-434200	GENERAL MATERIALS	0.40
	2032014643	42185	BAKER & TAYLOR BOOKS	10100610-434100	GENERAL MATERIALS	21.01
	2032014643	42185	BAKER & TAYLOR BOOKS	10100610-434200	GENERAL MATERIALS	0.40
	2032014645	42183	BAKER & TAYLOR BOOKS	10100609-434100	GENERAL MATERIALS	605.64

356	2032014645	42183	BAKER & TAYLOR BOOKS	10100610-434200	GENERAL MATERIALS	58.65
	2032023054	42182	BAKER & TAYLOR BOOKS	10100610-434100	GENERAL MATERIALS	104.13
	2032023054	42182	BAKER & TAYLOR BOOKS	10100610-434200	GENERAL MATERIALS	7.20
	2032023055	42181	BAKER & TAYLOR BOOKS	10100610-434100	GENERAL MATERIALS	30.23
	2032023055	42181	BAKER & TAYLOR BOOKS	10100610-434200	GENERAL MATERIALS	2.10
	2032023056	42180	BAKER & TAYLOR BOOKS	10100610-434100	GENERAL MATERIALS	13.25
	2032023056	42180	BAKER & TAYLOR BOOKS	10100610-434200	GENERAL MATERIALS	0.40
	2032023057	42179	BAKER & TAYLOR BOOKS	10100610-434100	GENERAL MATERIALS	17.20
	2032023057	42179	BAKER & TAYLOR BOOKS	10100610-434200	GENERAL MATERIALS	0.40
	2032023058	42178	BAKER & TAYLOR BOOKS	10100610-434100	GENERAL MATERIALS	7.79
	2032023058	42178	BAKER & TAYLOR BOOKS	10100610-434200	GENERAL MATERIALS	0.40
	2032023059	42177	BAKER & TAYLOR BOOKS	10100610-434100	GENERAL MATERIALS	34.39
	2032023059	42177	BAKER & TAYLOR BOOKS	10100610-434200	GENERAL MATERIALS	0.80
					BAKER & TAYLOR BOOKS Total:	6,326.18
586	099976	42252	BLACK HILLS CHEMICAL CO	10100610-426400	MAINTENANCE/FACILITIES	108.87
					BLACK HILLS CHEMICAL CO Total:	108.87
643	57633	40830	BLACK HILLS WINDOW CLEANING INC	10100610-422500	FACILITIES: WINDOW CLEANING	450.00
					BLACK HILLS WINDOW CLEANING INC Total:	450.00
6611	06/06/16	40840	BUTTKE, JAMI LYNN	10100610-422500	PROGRAMMING: PERFORMANCE	250.00
					BUTTKE, JAMI LYNN Total:	250.00

940	1375502	42248	CENTER POINT LARGE PRINT	10100609-434100	GENERAL MATERIALS	176.89
					CENTER POINT LARGE PRINT Total:	176.89
988	809820	42271	CHRIS SUPPLY COMPANY	10100609-429500	MAINTENANCE/FACILITIES	92.66
					CHRIS SUPPLY COMPANY Total:	92.66
1044	11419-2	39800	CLIMATE CONTROL SYSTEMS & SERVICE	10100609-422500	MAINTENANCE/FACILITIES	1,409.50
	11584	42457	CLIMATE CONTROL SYSTEMS & SERVICE	10100609-425200	MAINTENANCE/FACILITIES	1,761.00
					CLIMATE CONTROL SYSTEMS & SERVICE Total:	3,170.50
8111	6.12.16	42455	COMPLETE WEDDINGS & EVENTS	10100609-422500	PROGRAMMING-YOUTH	545.00
					COMPLETE WEDDINGS & EVENTS Total:	545.00
1164	S502154734.0 01	42028	CRESCENT ELECTRIC SUPPLY CO	10100609-425200	MAINTENANCE/FACILITIES	69.66
					CRESCENT ELECTRIC SUPPLY CO Total:	69.66
1234	IN301612	42251	DAKOTA BUSINESS CENTER	10100609-424400	MACHINES/EQUIPMENT	317.58
	IN301612	42251	DAKOTA BUSINESS CENTER	10100609-425300	MACHINES/EQUIPMENT	492.12
	IN301612	42251	DAKOTA BUSINESS CENTER	10100609-426100	MACHINES/EQUIPMENT	375.07
	IN301613	42249	DAKOTA BUSINESS CENTER	10100609-424400	MACHINES/EQUIPMENT	651.21
	IN301613	42249	DAKOTA BUSINESS CENTER	10100609-425300	MACHINES/EQUIPMENT	462.40
	IN301613	42249	DAKOTA BUSINESS CENTER	10100609-426100	MACHINES/EQUIPMENT	1.75
	IN301614	42247	DAKOTA BUSINESS CENTER	10100609-424400	MACHINES/EQUIPMENT	141.97
	IN301614	42247	DAKOTA BUSINESS CENTER	10100609-425300	MACHINES/EQUIPMENT	106.98

1234	IN302127	42250	DAKOTA BUSINESS CENTER	10100609-424400	MACHINES/EQUIPMENT	176.64
	IN302127	42250	DAKOTA BUSINESS CENTER	10100609-425300	MACHINES/EQUIPMENT	39.01
	IN302730	42453	DAKOTA BUSINESS CENTER	10100609-425300	MACHINES/EQUIPMENT	38.00
					DAKOTA BUSINESS CENTER Total:	2,802.73
1248	100372454	35028	DAKOTA PARTY	10100609-429400	PROGRAMMING	9.96
	100365985 CORR		DAKOTA PARTY	10100610-429400	CREDIT-FOL PAID INVOICE	(23.13)
	100386635	42294	DAKOTA PARTY	10100610-429400	PROGRAMMING-YOUTH	4.98
	100385614	42293	DAKOTA PARTY	10100610-429400	PROGRAMMING-YOUTH	9.57
	10022201	42292	DAKOTA PARTY	10100610-429400	PROGRAMMING-YOUTH	21.45
					DAKOTA PARTY Total:	22.83
1326	5865554	34146	DEMCO INC	10100609-429600	STRUCTURE	2,233.50
					DEMCO INC Total:	2,233.50
1789	5/31/2016	40586	FRIENDS OF THE LIBRARY	99600971-453000	REFUNDS	1,502.85
					FRIENDS OF THE LIBRARY Total:	1,502.85
8141	05/25/16 40980209	42176	GRAND RIVER HOSPITAL DISTRICT	10100609-422500	MISC	19.00
					GRAND RIVER HOSPITAL DISTRICT Total:	19.00
2168	253489-0	40560	HEARTLAND PAPER CO	10100609-426400	MAINTENANCE/FACILITIES	57.95
	261816-0	39687	HEARTLAND PAPER CO	10100609-426400	MAINTENANCE/FACILITIES	217.41
	251034-0	42246	HEARTLAND PAPER CO	10100609-426400	MAINTENANCE/FACILITIES	46.12
	251034-0	42246	HEARTLAND PAPER CO	10100610-426400	MAINTENANCE/FACILITIES	46.60

2168	257439-0	42243	HEARTLAND PAPER CO	10100610-426400	MAINTENANCE/FACILITIES	62.96
	266452-0	42240	HEARTLAND PAPER CO	10100610-426400	MAINTENANCE/FACILITIES	92.25
	268302-0	42245	HEARTLAND PAPER CO	10100610-426400	MAINTENANCE/FACILITIES	46.60
	270511-0	42456	HEARTLAND PAPER CO	10100610-426400	MAINTENANCE/FACILITEIS	112.70
	270510-0	42454	HEARTLAND PAPER CO	10100610-426400	MAINTENANCE/FACILITIES	46.12
	268304-0	42242	HEARTLAND PAPER CO	10100610-426400	MAINTENANCE/FACILITIES	134.14
					HEARTLAND PAPER CO Total:	862.85
2242	2016-06	41025	HIGHMARK FCU PARKING	10100609-424600	PARKING	672.00
					HIGHMARK FCU PARKING Total:	672.00
2453	190100200672 4	41235	INTERSTATE BATTERIES INC	10100609-426100	BATTERIES	38.00
					INTERSTATE BATTERIES INC Total:	38.00
2498	6026	41855	JANTECH LLC	10100610-422500	MAINTENANCE/FACILITIES	100.00
	6009	42270	JANTECH LLC	10100609-422500	MAINTENANCE/FACILITIES	220.00
					JANTECH LLC Total:	320.00
2719	922814	40831	KNECHT HOME CENTER	10100609-425200	FACILITIES: GENERAL REPAIRS	18.95
					KNECHT HOME CENTER Total:	18.95
6181	507118	41857	LIVING DESIGN	10100609-422500	BIRD MAINTENANCE	125.00
					LIVING DESIGN Total:	125.00
3208	82964	40829	MENARDS	10100609-425100	SUPPLIES	5.48
	82964	40829	MENARDS	10100609-426400	SUPPLIES	12.97
	82964	40829	MENARDS	10100609-429400	SUPPLIES	87.85

3208	84866	42031	MENARDS	10100609-426100	MAINTENANCE/FACILITIES	5.94
	84866	42031	MENARDS	10100609-426300	MAINTENANCE/FACILITIES	2.98
	84866	42031	MENARDS	10100609-426400	MAINTENANCE/FACILITIES	186.63
	83702	42272	MENARDS	10100609-425200	MAINTENANCE/FACILITIES	25.16
					MENARDS Total:	327.01
3242	7009002028014	39696	MIDCONTINENT COMMUNICATIONS	10100609-428100	MACHINES/EQUIPMENT	215.00
	1268111018072	42244	MIDCONTINENT COMMUNICATIONS	10100610-428100	MACHINES/EQUIPMENT	1,000.00
	7009002028072	42241	MIDCONTINENT COMMUNICATIONS	10100610-428100	MACHINES/EQUIPMENT	215.00
					MIDCONTINENT COMMUNICATIONS Total:	1,430.00
3258	93689532	40583	MIDWEST TAPE EXCHANGE	10100609-434200	GENERAL MATERIALS	7.50
	93689532	40583	MIDWEST TAPE EXCHANGE	10100609-434600	GENERAL MATERIALS	50.97
	93738999	40581	MIDWEST TAPE EXCHANGE	10100609-434200	GENERAL MATERIALS	2.50
	93738999	40581	MIDWEST TAPE EXCHANGE	10100609-434600	GENERAL MATERIALS	22.49
	93739000	40580	MIDWEST TAPE EXCHANGE	10100609-434200	GENERAL MATERIALS	2.50
	93739000	40580	MIDWEST TAPE EXCHANGE	10100609-434600	GENERAL MATERIALS	22.49
	93742895	40584	MIDWEST TAPE EXCHANGE	10100609-434100	GENERAL MATERIALS	78.98
	93756839	40579	MIDWEST TAPE EXCHANGE	10100609-434200	GENERAL MATERIALS	32.50
	93756839	40579	MIDWEST TAPE EXCHANGE	10100609-434600	GENERAL MATERIALS	248.87
	93761099	40576	MIDWEST TAPE EXCHANGE	10100609-434200	GENERAL MATERIALS	5.00
	93761099	40576	MIDWEST TAPE EXCHANGE	10100609-434600	GENERAL MATERIALS	44.98

3258	93807630	40578	MIDWEST TAPE EXCHANGE	10100609-434200	GENERAL MATERIALS	10.00
	93807630	40578	MIDWEST TAPE EXCHANGE	10100609-434600	GENERAL MATERIALS	89.96
	93820470	40582	MIDWEST TAPE EXCHANGE	10100609-434200	GENERAL MATERIALS	2.50
	93820470	40582	MIDWEST TAPE EXCHANGE	10100609-434600	GENERAL MATERIALS	4.49
	93966779	40568	MIDWEST TAPE EXCHANGE	10100609-434200	GENERAL MATERIALS	12.50
	93966779	40568	MIDWEST TAPE EXCHANGE	10100609-434600	GENERAL MATERIALS	104.95
	93966780	40566	MIDWEST TAPE EXCHANGE	10100609-434200	GENERAL MATERIALS	35.00
	93966780	40566	MIDWEST TAPE EXCHANGE	10100609-434600	GENERAL MATERIALS	266.86
	93966782	40565	MIDWEST TAPE EXCHANGE	10100609-434200	GENERAL MATERIALS	20.00
	93966782	40565	MIDWEST TAPE EXCHANGE	10100609-434600	GENERAL MATERIALS	164.17
	93966783	40564	MIDWEST TAPE EXCHANGE	10100609-434200	GENERAL MATERIALS	2.50
	93966783	40564	MIDWEST TAPE EXCHANGE	10100609-434600	GENERAL MATERIALS	22.49
	93975509	40569	MIDWEST TAPE EXCHANGE	10100609-434200	GENERAL MATERIALS	5.00
	93975509	40569	MIDWEST TAPE EXCHANGE	10100609-434600	GENERAL MATERIALS	46.48
	93975510	40563	MIDWEST TAPE EXCHANGE	10100609-434200	GENERAL MATERIALS	17.50
	93975510	40563	MIDWEST TAPE EXCHANGE	10100609-434600	GENERAL MATERIALS	130.43
	93983176	40562	MIDWEST TAPE EXCHANGE	10100609-434100	GENERAL MATERIALS	39.99
	93966784	40599	MIDWEST TAPE EXCHANGE	10100609-434200	GENERAL MATERIALS	7.50
	93966784	40599	MIDWEST TAPE EXCHANGE	10100609-434600	GENERAL MATERIALS	67.47



3258	93983177	40596	MIDWEST TAPE EXCHANGE	10100609-434100	GENERAL MATERIALS	124.97
	93983178	40593	MIDWEST TAPE EXCHANGE	10100609-434100	GENERAL MATERIALS	59.99
	93988994	40598	MIDWEST TAPE EXCHANGE	10100609-434200	GENERAL MATERIALS	2.50
	93988994	40598	MIDWEST TAPE EXCHANGE	10100609-434600	GENERAL MATERIALS	11.24
	93988995	40595	MIDWEST TAPE EXCHANGE	10100609-434200	GENERAL MATERIALS	52.50
	93988995	40595	MIDWEST TAPE EXCHANGE	10100609-434600	GENERAL MATERIALS	281.04
	93988997	40592	MIDWEST TAPE EXCHANGE	10100609-434200	GENERAL MATERIALS	15.00
	93988997	40592	MIDWEST TAPE EXCHANGE	10100609-434600	GENERAL MATERIALS	101.19
	93988998	40589	MIDWEST TAPE EXCHANGE	10100609-434200	GENERAL MATERIALS	2.50
	93988998	40589	MIDWEST TAPE EXCHANGE	10100609-434600	GENERAL MATERIALS	22.49
	93996517	40597	MIDWEST TAPE EXCHANGE	10100609-434200	GENERAL MATERIALS	10.00
	93996517	40597	MIDWEST TAPE EXCHANGE	10100609-434600	GENERAL MATERIALS	34.46
	94000927	40594	MIDWEST TAPE EXCHANGE	10100609-434200	GENERAL MATERIALS	10.00
	94000927	40594	MIDWEST TAPE EXCHANGE	10100609-434600	GENERAL MATERIALS	89.96
	94000928	40591	MIDWEST TAPE EXCHANGE	10100609-434200	GENERAL MATERIALS	2.50
	94000928	40591	MIDWEST TAPE EXCHANGE	10100609-434600	GENERAL MATERIALS	22.49
	94000929	40588	MIDWEST TAPE EXCHANGE	10100609-434200	GENERAL MATERIALS	10.00
	94000929	40588	MIDWEST TAPE EXCHANGE	10100609-434600	GENERAL MATERIALS	82.46
	93983174	40561	MIDWEST TAPE EXCHANGE	10100609-434100	GENERAL MATERIALS	24.99

3258	94017530	40848	MIDWEST TAPE EXCHANGE	10100609-434600	DVDS	24.99
	94038914	40836	MIDWEST TAPE EXCHANGE	10100609-434200	DVDS	2.50
	94038914	40836	MIDWEST TAPE EXCHANGE	10100609-434600	DVDS	22.49
	94038913	40846	MIDWEST TAPE EXCHANGE	10100609-434200	DVDS	2.50
	94038913	40846	MIDWEST TAPE EXCHANGE	10100609-434600	DVDS	22.49
	94042718	40837	MIDWEST TAPE EXCHANGE	10100609-434200	DVDS	2.50
	94042718	40837	MIDWEST TAPE EXCHANGE	10100609-434600	DVDS	22.49
	94042720	40839	MIDWEST TAPE EXCHANGE	10100609-434200	DVDS	15.00
	94042720	40839	MIDWEST TAPE EXCHANGE	10100609-434600	DVDS	130.44
	94042721	40838	MIDWEST TAPE EXCHANGE	10100609-434200	DVDS	5.00
	94042721	40838	MIDWEST TAPE EXCHANGE	10100609-434600	DVDS	33.73
	93850112	40841	MIDWEST TAPE EXCHANGE	10100609-434200	DVDS	12.50
	93850112	40841	MIDWEST TAPE EXCHANGE	10100609-434600	DVDS	110.20
	93858899	40842	MIDWEST TAPE EXCHANGE	10100609-434100	DVDS	34.99
	93858900	40843	MIDWEST TAPE EXCHANGE	10100609-434100	AUDIO BOOK	89.98
	93872007	40844	MIDWEST TAPE EXCHANGE	10100609-434200	DVDS	50.00
	93872007	40844	MIDWEST TAPE EXCHANGE	10100609-434600	DVDS	423.55
	93876703	40847	MIDWEST TAPE EXCHANGE	10100609-434200	DVDS	2.50
	93876703	40847	MIDWEST TAPE EXCHANGE	10100609-434600	DVDS	22.49

3258	94017528	40845	MIDWEST TAPE EXCHANGE	10100609-434200	DVDS	20.00
	94017528	40845	MIDWEST TAPE EXCHANGE	10100609-434600	DVDS	127.42
	93983173	40823	MIDWEST TAPE EXCHANGE	10100609-434600	DVDS	59.98
	93859020	42238	MIDWEST TAPE EXCHANGE	10100609-434200	GENERAL MATERIALS	7.50
	93859020	42238	MIDWEST TAPE EXCHANGE	10100609-434600	GENERAL MATERIALS	67.47
	94005436	42233	MIDWEST TAPE EXCHANGE	10100609-434100	GENERAL MATERIALS	234.94
	94005534	42228	MIDWEST TAPE EXCHANGE	10100609-434200	GENERAL MATERIALS	2.50
	94005534	42228	MIDWEST TAPE EXCHANGE	10100609-434600	GENERAL MATERIALS	22.49
	94005535	42237	MIDWEST TAPE EXCHANGE	10100609-434200	GENERAL MATERIALS	7.50
	94005535	42237	MIDWEST TAPE EXCHANGE	10100609-434600	GENERAL MATERIALS	67.47
	94005537	42232	MIDWEST TAPE EXCHANGE	10100609-434200	GENERAL MATERIALS	7.50
	94005537	42232	MIDWEST TAPE EXCHANGE	10100609-434600	GENERAL MATERIALS	67.47
	94005538	42227	MIDWEST TAPE EXCHANGE	10100609-434200	GENERAL MATERIALS	69.96
	94005539	42236	MIDWEST TAPE EXCHANGE	10100609-434200	GENERAL MATERIALS	2.50
	94005539	42236	MIDWEST TAPE EXCHANGE	10100609-434600	GENERAL MATERIALS	17.24
	94021908	42235	MIDWEST TAPE EXCHANGE	10100609-434100	GENERAL MATERIALS	39.99
	94021910	42230	MIDWEST TAPE EXCHANGE	10100609-434100	GENERAL MATERIALS	32.99
	94021911	42225	MIDWEST TAPE EXCHANGE	10100609-434100	GENERAL MATERIALS	108.97
	93859022	42266	MIDWEST TAPE EXCHANGE	10100609-434200	DVDS	2.50

3258	93859022	42266	MIDWEST TAPE EXCHANGE	10100609-434600	DVDS	22.49
					MIDWEST TAPE EXCHANGE Total:	4,548.07
3284	399	42239	MINITEX-CPP	10100609-427000	TRAVEL/TRAINING	35.00
					MINITEX-CPP Total:	35.00
3555	0000464143	41222	OCLC INC	10100609-425900	CATALOGING	3,090.68
					OCLC INC Total:	3,090.68
3617	136816003277 0032816	39695	OVERDRIVE INC	10100610-434500	GENERAL MATERIALS	232.85
	136800005832 3052116	40610	OVERDRIVE INC	10100609-434500	GENERAL MATERIALS	16.95
	136800023229 7051716	40603	OVERDRIVE INC	10100609-434500	GENERAL MATERIALS	24.29
	136800023207 3051716	40606	OVERDRIVE INC	10100609-434500	GENERAL MATERIALS	120.48
	136800023237 0051716	40601	OVERDRIVE INC	10100609-434500	GENERAL MATERIALS	200.98
	136800023254 0051716	40609	OVERDRIVE INC	10100609-434500	GENERAL MATERIALS	310.24
	136800023284 3051716	40605	OVERDRIVE INC	10100609-434500	GENERAL MATERIALS	423.97
	136810440054 3051616	40602	OVERDRIVE INC	10100609-434500	GENERAL MATERIALS	35.95
	136811054578 0051716	40600	OVERDRIVE INC	10100609-434500	GENERAL MATERIALS	336.21
	136811061374 0051716	40608	OVERDRIVE INC	10100609-434500	GENERAL MATERIALS	9.99
	136812100018 7051616	40604	OVERDRIVE INC	10100609-434500	GENERAL MATERIALS	563.11
	136817355143 7052216	40607	OVERDRIVE INC	10100609-434500	GENERAL MATERIALS	29.99
	136800010868 3060416	42217	OVERDRIVE INC	10100609-434500	GENERAL MATERIALS	25.99
	136800012001 0060116	42212	OVERDRIVE INC	10100609-434500	GENERAL MATERIALS	17.99

3617	136800022619 0052416	42208	OVERDRIVE INC	10100609-434500	GENERAL MATERIALS	464.94
	136800022644 7052416	42216	OVERDRIVE INC	10100610-434500	GENERAL MATERIALS	465.91
	136800023870 0053116	42211	OVERDRIVE INC	10100610-434500	GENERAL MATERIALS	187.48
	136800023893 7053116	42207	OVERDRIVE INC	10100610-434500	GENERAL MATERIALS	7.99
	136800023901 0053116	42215	OVERDRIVE INC	10100610-434500	GENERAL MATERIALS	357.99
	136800023923 0053116	42210	OVERDRIVE INC	10100610-434500	GENERAL MATERIALS	120.99
	136800023942 0053116	42206	OVERDRIVE INC	10100610-434500	GENERAL MATERIALS	490.98
	136800031721 3060716	42214	OVERDRIVE INC	10100610-434500	GENERAL MATERIALS	276.98
	136800031753 0060716	42209	OVERDRIVE INC	10100610-434500	GENERAL MATERIALS	131.96
	136800031774 0060716	42205	OVERDRIVE INC	10100610-434500	GENERAL MATERIALS	395.95
	136800031814 3060716	42213	OVERDRIVE INC	10100609-434500	GENERAL MATERIALS	168.98
	136814412818 7053116	42170	OVERDRIVE INC	10100609-434100	GENERAL MATERIALS	393.00
	136815564650 0052716	42165	OVERDRIVE INC	10100609-434500	GENERAL MATERIALS	427.96
	136816581593 0052516	42159	OVERDRIVE INC	10100609-434500	GENERAL MATERIALS	79.90
	136817185775 0052416	42157	OVERDRIVE INC	10100610-434500	GENERAL MATERIALS	265.97
	136817275814 0052416	42164	OVERDRIVE INC	10100610-434500	GENERAL MATERIALS	92.98
	136818421042 7052716	42158	OVERDRIVE INC	10100609-434500	GENERAL MATERIALS	52.94
	136818562187 3052716	42169	OVERDRIVE INC	10100609-434500	GENERAL MATERIALS	467.01
	136819264712 7060116	42163	OVERDRIVE INC	10100609-434500	GENERAL MATERIALS	1,903.36

3617	136819273511 0060116	42152	OVERDRIVE INC	10100609-434500	GENERAL MATERIALS	635.51
	136800033336 3061416	42173	OVERDRIVE INC	10100609-434500	GENERAL MATERIALS	18.19
	136800033353 3061416	42168	OVERDRIVE INC	10100609-434500	GENERAL MATERIALS	37.98
	136800033377 0061416	42162	OVERDRIVE INC	10100609-434500	GENERAL MATERIALS	18.99
	136800033395 3061416	42172	OVERDRIVE INC	10100609-434500	GENERAL MATERIALS	620.93
	136811183715 3060716	42167	OVERDRIVE INC	10100609-434100	GENERAL MATERIALS	1,076.38
	136811585742 7060616	42161	OVERDRIVE INC	10100609-434500	GENERAL MATERIALS	43.55
	136812181182 3053116	42171	OVERDRIVE INC	10100609-434500	GENERAL MATERIALS	7.99
	136812224870 7060616	42166	OVERDRIVE INC	10100609-434500	GENERAL MATERIALS	253.91
	136812273704 3053116	42160	OVERDRIVE INC	10100609-434500	GENERAL MATERIALS	144.97
					OVERDRIVE INC Total:	11,960.66
3660	21987	42156	PARKWAY CAR WASH	10100609-425100	MAINTENANCE/FACILITIES	8.50
					PARKWAY CAR WASH Total:	8.50
8110	053016- 060216	42339	PETERSON, JILL	10100609-427000	TRAVEL/TRAINING	140.35
					PETERSON, JILL Total:	140.35
3863	72339	42030	RAPID CITY JOURNAL - ADVERTISING	10100609-429300	GENERAL MATERIALS	42.75
					RAPID CITY JOURNAL - ADVERTISING Total:	42.75
3864	05/16/2016	40827	RAPID CITY LIBRARY FOUNDATION INC	10100609-422500	DESIGN SERVICES	3,148.55
					RAPID CITY LIBRARY FOUNDATION INC Total:	3,148.55
3872	3/1/2016	35023	RAPID CITY PUBLIC LIBRARY	10100609-426100	REFUNDS	1.44

3872					RAPID CITY PUBLIC LIBRARY Total:	1.44
3887	26379	42269	RAPID FIRE PROTECTION INC	10100610-422500	MACHINES/EQUIPMENT	100.00
					RAPID FIRE PROTECTION INC Total:	100.00
8048	98854	37813	RUSHMORE HOTEL & SUITES	10100609-427000	TRAVEL/TRAINING	218.84
					RUSHMORE HOTEL & SUITES Total:	218.84
4182	001316	41856	SAM'S CLUB	10100610-429400	YOUTH PROGRAMMING	39.90
					SAM'S CLUB Total:	39.90
4297	09/24/16	42447	SDSU EXTENSION	10100610-429400	PROGRAMMING	75.00
					SDSU EXTENSION Total:	75.00
4330	2442445	41236	SERVALL UNIFORM/LINEN CO	10100609-426400	JANITORIAL SUPPLIES	69.24
	2388115	40559	SERVALL UNIFORM/LINEN CO	10100609-426400	MAINTENANCE/FACILITIES	96.93
					SERVALL UNIFORM/LINEN CO Total:	166.17
4371	293267	42029	SHOWCASES	10100609-434200	GENERAL MATERIALS	115.56
					SHOWCASES Total:	115.56
7957	06/13/16	40835	SOL YOGA COLLECTIVE	10100610-422500	PROGRAMMING: YOGA SERVICES	225.00
					SOL YOGA COLLECTIVE Total:	225.00
6415	006674901 050616	39426	VAST BUSINESS	10100609-428100	MACHINES/EQUIPMENT	492.65
					VAST BUSINESS Total:	492.65
5118	004680	40826	WALMART COMMUNITY	10100610-429400	YOUTH PROGRAMMING	77.62
	009380	39415	WALMART COMMUNITY	10100609-426100	SUPPLIES	20.73
	006853	39697	WALMART COMMUNITY	10100609-429400	MAINTENANCE/FACILITIES	6.98

5118	004745	41034	WALMART COMMUNITY	10100610-429400	PROGRAMMING SUPPLIES	31.67
					WALMART COMMUNITY Total:	137.00
5129	216898	42264	WARNE CHEMICAL & EQUIP.	10100610-422500	GROUNDS	53.00
					WARNE CHEMICAL & EQUIP. Total:	53.00
5220	674278-0	37924	WESTERN STATIONERS	10100609-426100	SUPPLIES	21.23
	674278-0	37924	WESTERN STATIONERS	10100609-429400	SUPPLIES	12.05
	676007-0	40833	WESTERN STATIONERS	10100610-426100	MOUSE PAD	13.59
	676343-0	42027	WESTERN STATIONERS	10100609-429600	SUPPLIES	69.99
	676259-0	41237	WESTERN STATIONERS	10100609-426100	SUPPLIES	22.48
	676814-0	42026	WESTERN STATIONERS	10100609-426100	SUPPLIES	210.36
	677073-0	42174	WESTERN STATIONERS	10100609-426100	SUPPLIES	684.08
	676211-0	41036	WESTERN STATIONERS	10100609-426100	CLOCK	31.41
					WESTERN STATIONERS Total:	1,065.19
Total					<b>Grand Total:</b>	<b>52,382.32</b>