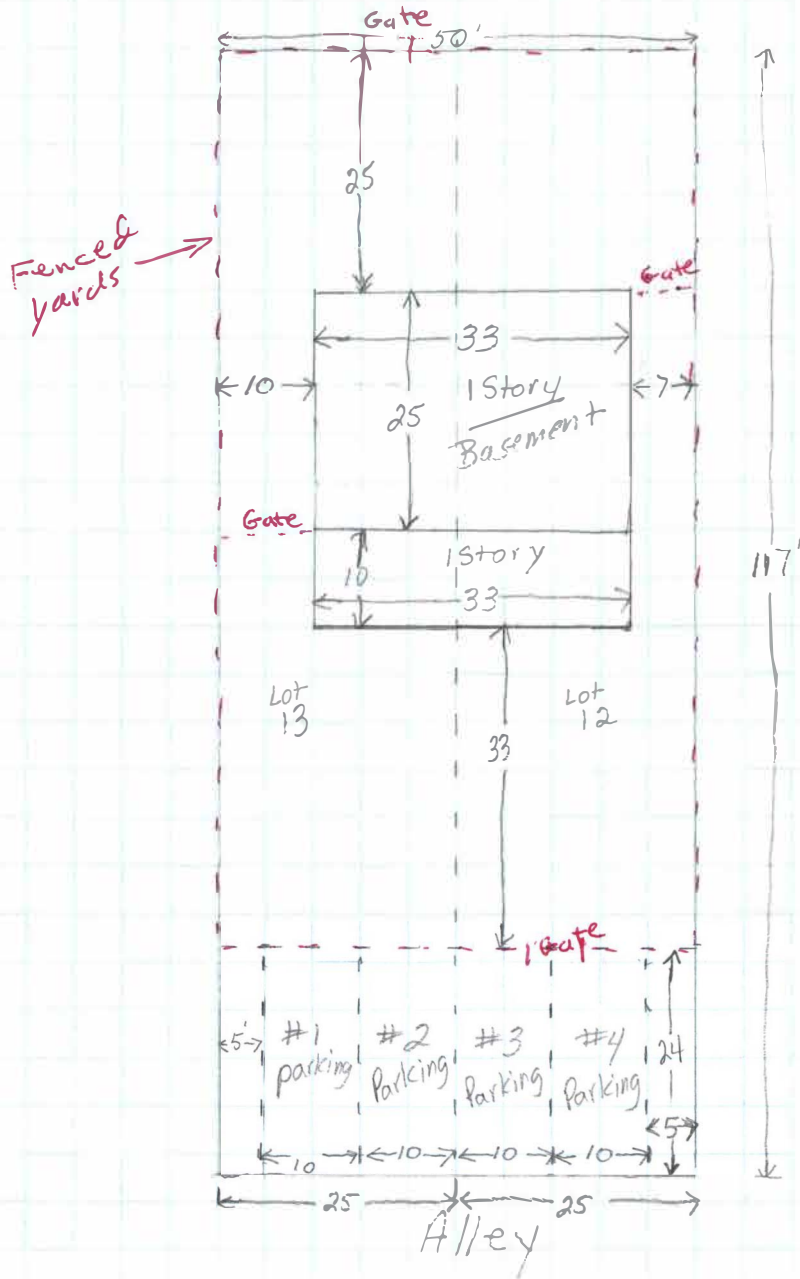


Case No. 22VA001

Legal Description:

Lot 12 thru 13 of Block 25 of Nowlin and Wood Addition, located in Section 31, T2N, R8E, BHM, Rapid City, Pennington County, South Dakota

211 East Custer Street



1" = 20'

RECEIVED

JAN 24 2008

CITY DEPARTMENT
COMMUNITY DEVELOPMENT