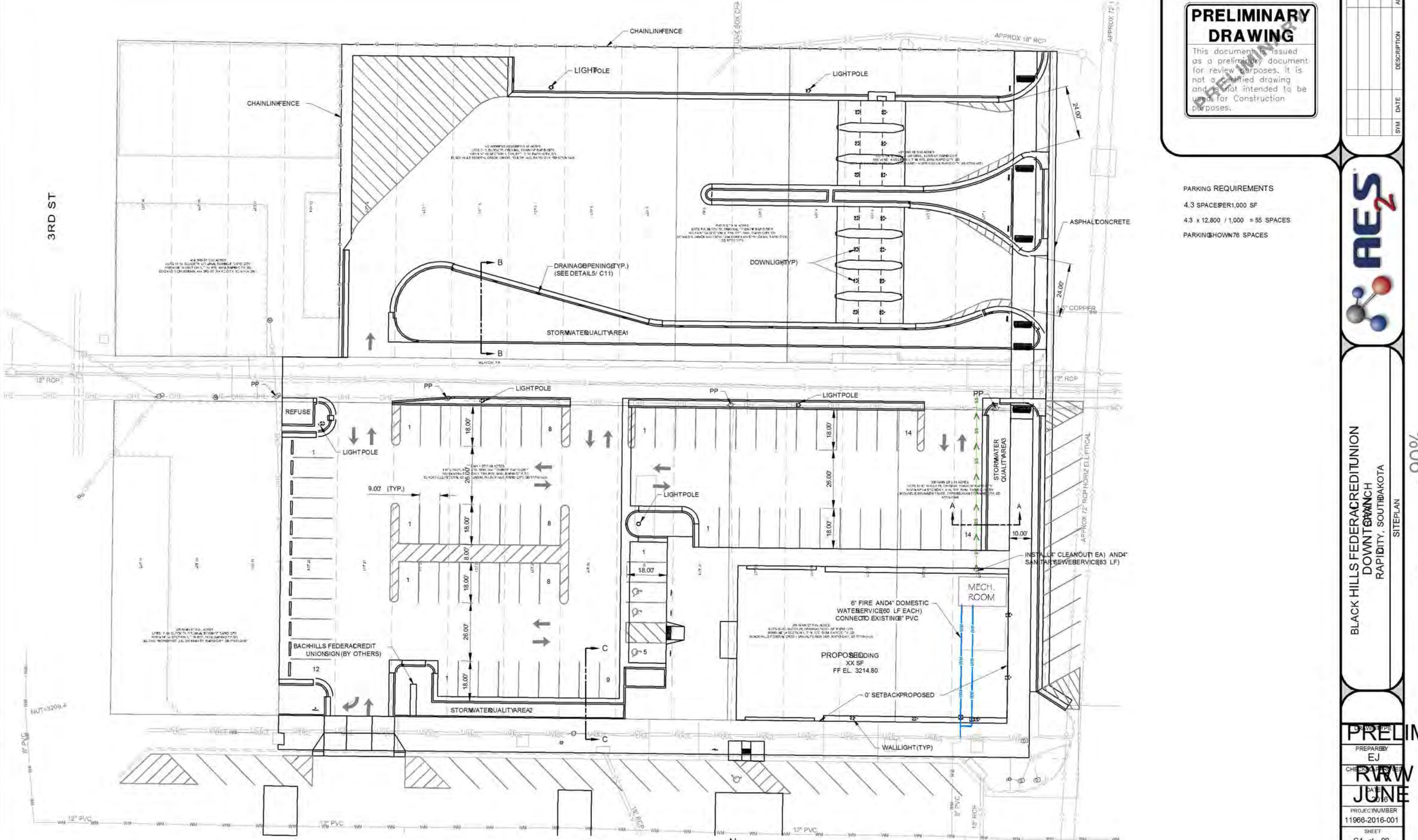


Case No. 16PD018

Legal Description:

Lots 1 thru 12 and Lots 20 thru 32 of Block 78 of Original Town of Rapid City, located in Section 1, T1N, R7E, BHM, Rapid City, Pennington County, South Dakota



PRELIMINARY DRAWING
 This document is issued as a preliminary document for review purposes. It is not a certified drawing and is not intended to be used for construction purposes.

PARKING REQUIREMENTS
 4.3 SPACES PER 1,000 SF
 4.3 x 12,800 / 1,000 = 55 SPACES
 PARKING SHOW 76 SPACES



BLACK HILLS FEDERACREDIT UNION
 DOWNTOWN BRANCH
 RAPID CITY, SOUTH DAKOTA

PRELIMINARY
 PREPARED BY
 E.J.
 R.W.W.
 DATE
 JUNE 2016
 PROJECT NUMBER
 11986-2016-001
 SHEET
 C4 of 00
 DRAWING

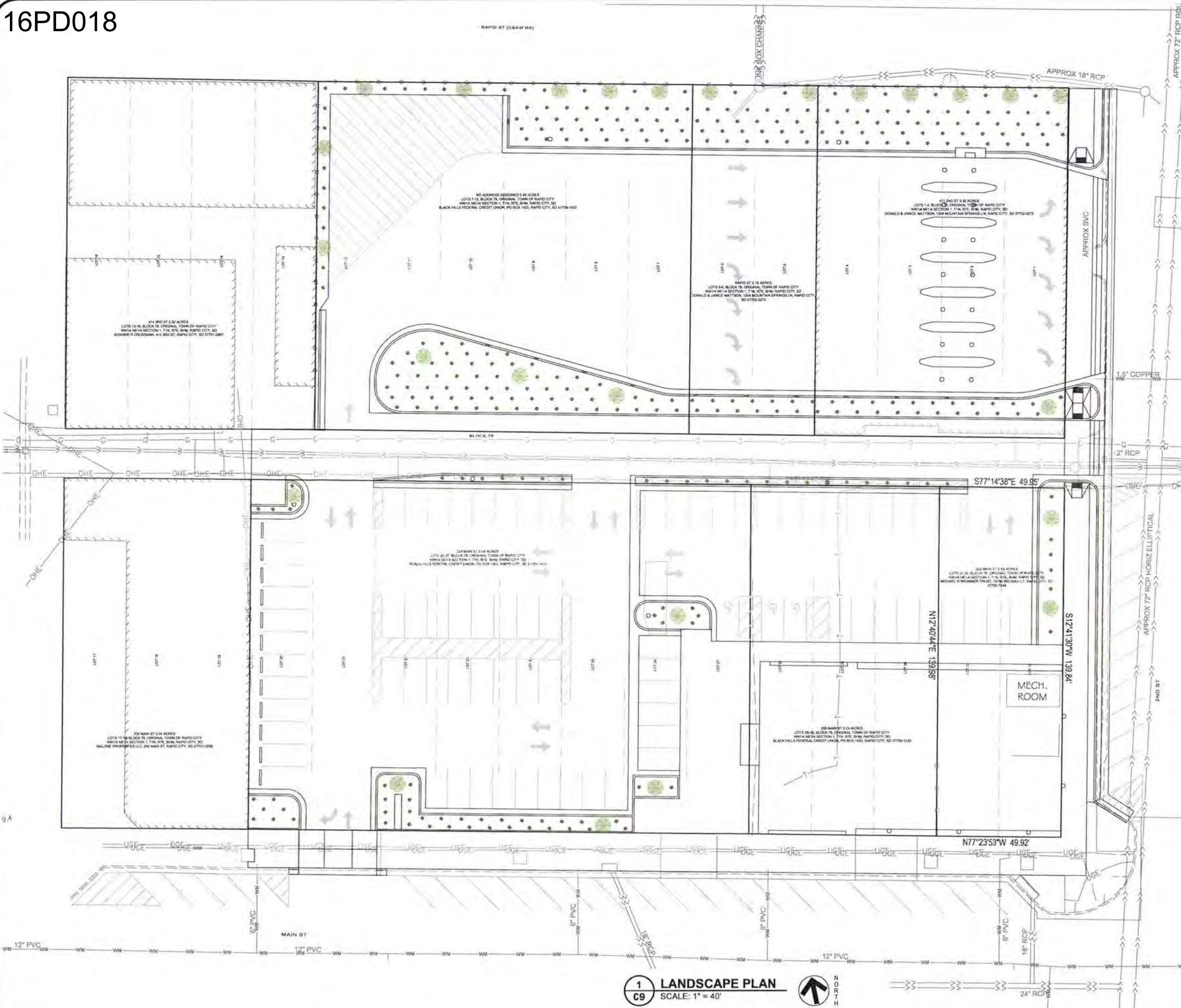
1 SITE PLAN
 C4 SCALE: 1/4" = 1'-0"

- 90%

Milestones

C4

File: W:\Black Hills FCU\11966-2016\001 - Download\040 Final Design\Drawings\DOWN TOWN BRANCH\16PD018-16-01-LANDSCAPE PLAN.dwg
 Plotted By: Michael Schille Date: Thursday, March 24, 2016
 Last Saved By: Michael Schille Date: Thursday, March 24, 2016 7:22:35 AM



PRELIMINARY DRAWING

This document is issued as a preliminary document for review purposes. It is not a certified drawing and is not intended to be used for construction purposes.

REQUIRED LANDSCAPE POINTS

LOT SIZE (SF)	87,500
BUILDING SIZE (SF)	- 8,980
REQUIRED POINTS	= 78,520
75% MUST BE ON SITE	= 58,890

EXISTING OFF SITE POINTS

3 MEDIUM TREES	= 3,000 POINTS
10 (2') SHRUBS	= 2,500 POINTS
TOTAL	= 5,500 POINTS

LANDSCAPE POINTS SHOWN

OFF SITE	ON SITE
EXISTING 5,500	21 MEDIUM TREES @ 1,000 POINTS = 21,000 POINTS
PROPOSED 37 (2') SHRUBS @ 250 POINTS = 9,250 POINTS	288 (2') SHRUBS @ 250 POINTS = 72,000 POINTS
TOTAL = 14,750 POINTS	TOTAL = 93,000 POINTS

LANDSCAPE POINTS REMOVED WITH PARKING EXPANSION

110 (2') SHRUBS	= 27,500 POINTS
-----------------	-----------------

LANDSCAPE NOTES

- ALL LANDSCAPING SHALL BE INSTALLED PER INSTALLATION DETAILS
- SHRUBS SHALL BE JUNIPER (BUFFALO) AND BE 1' MINIMUM IN HEIGHT AT THE TIME OF PLANTING.
- PLANTING SEASON SHALL BE FROM APRIL 1 TO JUNE 15 AND FROM SEPTEMBER 1 TO NOVEMBER 1. EXCEPTIONS SHALL BE COORDINATED WITH THE OWNER.
- ALL PLANT MATERIALS SHALL COMPLY WITH GUIDELINES ESTABLISHED BY THE AMERICAN STANDARD NURSERY STOCK. ALL TREES AND SHRUBS SHALL BE GROWN FOR ONE (1) YEAR IN A NURSERY LOCATED WITH USDA HARDINESS ZONES 1-5.
- ALL PLANTS SHALL BE INSTALLED WITH ACCORDANCE WITH DRAWINGS AND DETAILS.
- ALL MEDIUM DECIDUOUS TREES SHALL BE AMERICAN SENTRY AND HAVE A MINIMUM TRUNK DIAMETER OF 2" AT THE TIME OF PLANTING.
- CONTRACTOR TO PROVIDE 12" MINIMUM DEPTH OF PLANTING SOIL FOR ALL PLANTING AREAS.
- PLANTERS TO BE BUILT AS STORM WATER QUALITY CAPTURE SHALL HAVE PLANTING MEDIA AS SHOWN ON PLANTER AREA / STORM WATER QUALITY DETAIL 3/C11.
- THE CONTRACTOR IS TO GUARANTEE ONE (1) YEAR WARRANTY FOR ALL PLANT MATERIALS. WARRANTY PERIOD COMMENCES AT THE COMPLETION DATE OR AS DIRECTED BY OWNER IF ACCEPTED AN EARLIER INSTALL. WARRANTY COVERS DEATH OR UNSATISFACTORY GROWTH, EXCEPT FOR LACK OF MAINTENANCE FROM THE OWNER OR OTHER CIRCUMSTANCES THAT ARE OUT OF THE CONTRACTOR'S CONTROL.

LANDSCAPE LEGEND

- MEDIUM DECIDUOUS TREE (AMERICAN SENTRY)
- (2') SHRUBS JUNIPER (BUFFALO)

1 LANDSCAPE PLAN
SCALE: 1" = 40'



SYM	DATE	DESCRIPTION	APPR

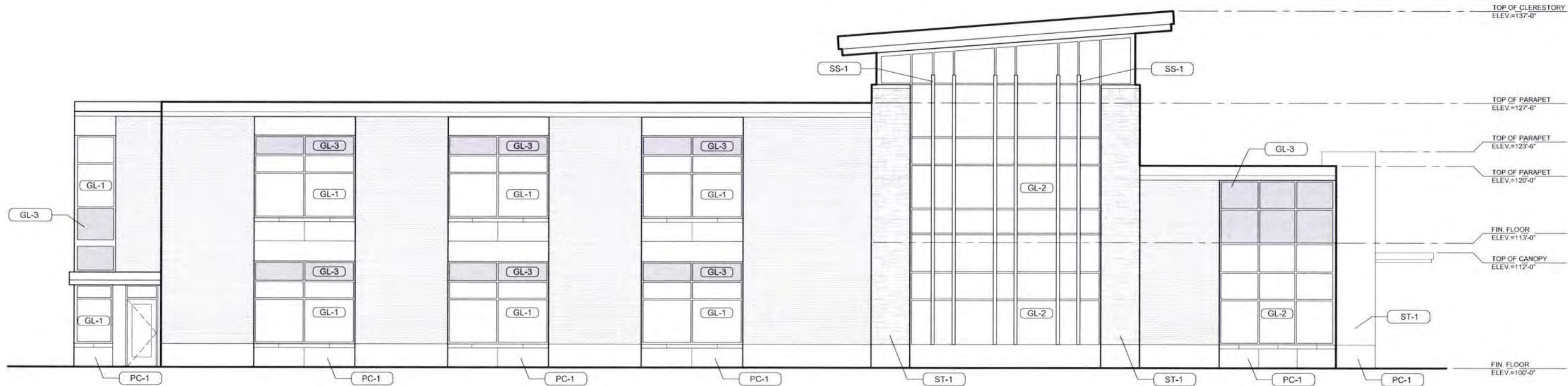


BLACK HILLS FEDERAL CREDIT UNION
 DOWNTOWN BRANCH
 RAPID CITY, SOUTH DAKOTA
 LANDSCAPE PLAN

Milactona - 300%

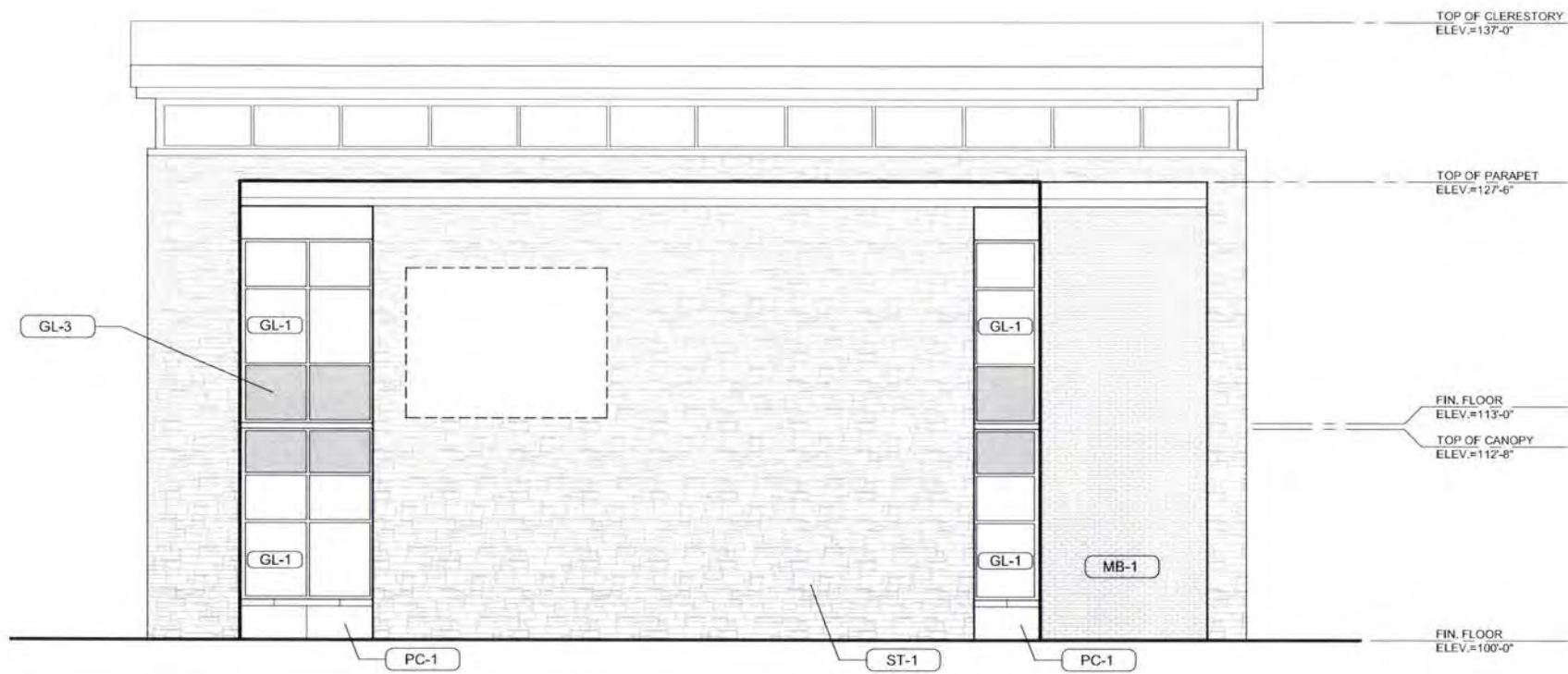
DRAWING TYPE	PRELIMINARY
PREPARED BY	EJ
CHECKED / APPROVED	RW RW
DATE	MARCH 2016
PROJECT NUMBER	11966-2016-001
SHEET	C9 of 00
DRAWING	C9

PRELIMINARY



NORTH ELEVATION

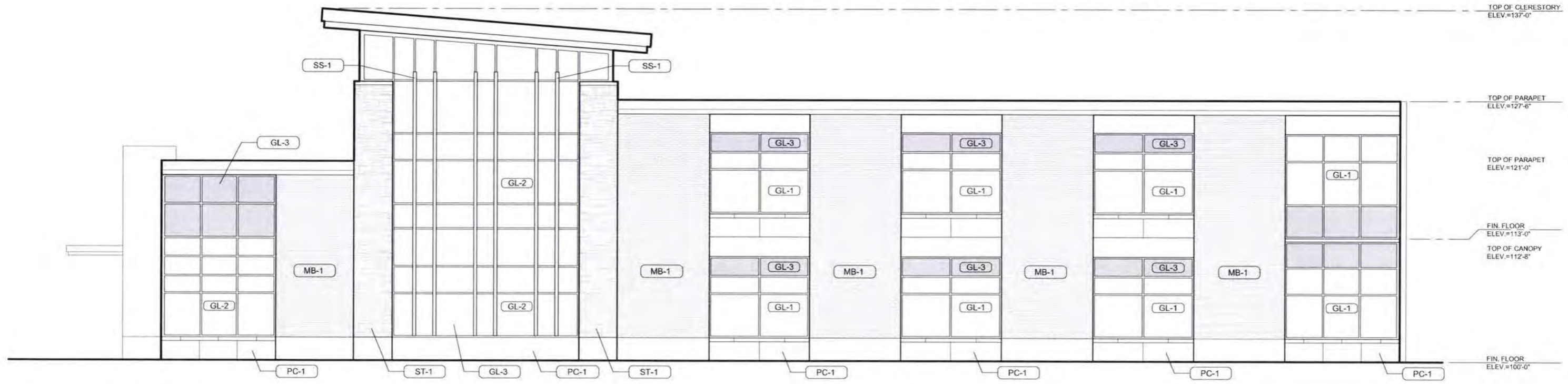
3/32" = 1'-0"



EAST ELEVATION

3/32" = 1'-0"

PROPOSED ELEVATIONS
 BLACK HILLS FEDERAL CREDIT UNION
 DOWNTOWN MEMBER SERVICE CENTER
 RAPID CITY, SD



SOUTH ELEVATION

3/32" = 1'-0"



WEST ELEVATION

3/32" = 1'-0"

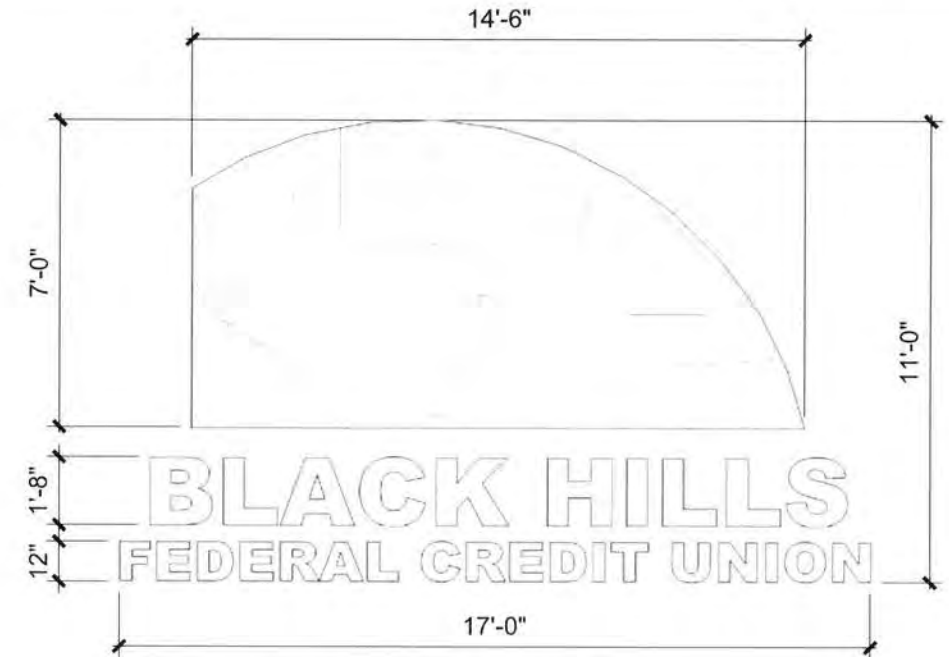
PROPOSED ELEVATIONS
 BLACK HILLS FEDERAL CREDIT UNION
 DOWNTOWN MEMBER SERVICE CENTER
 RAPID CITY, SD

03-24-16



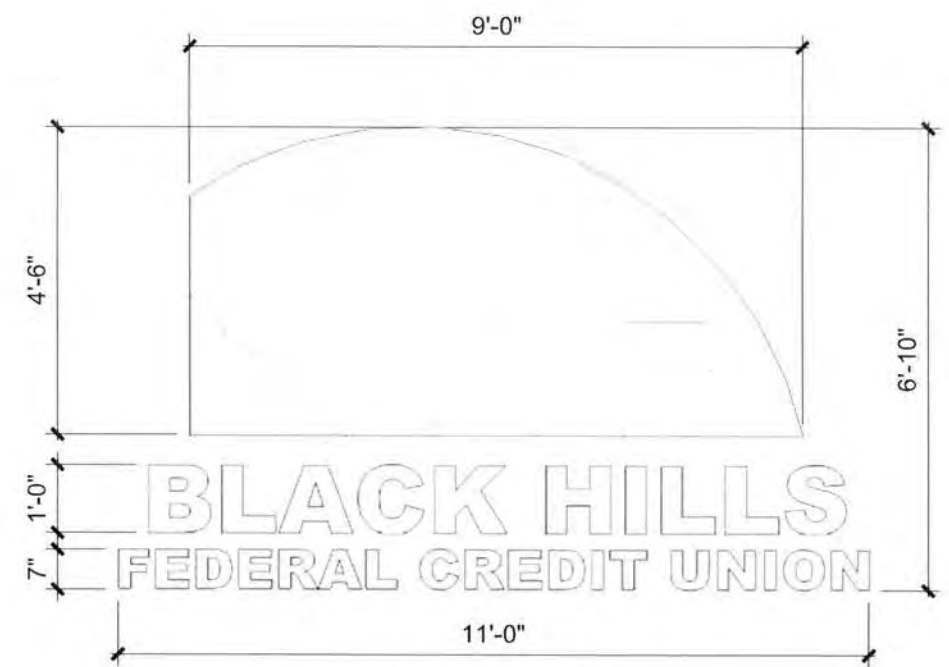
MONUMENT SIGNAGE

NOT TO SCALE
 *INTERNALLY ILLUMINATED CABINET SIGN
 *LED MESSAGE CENTER



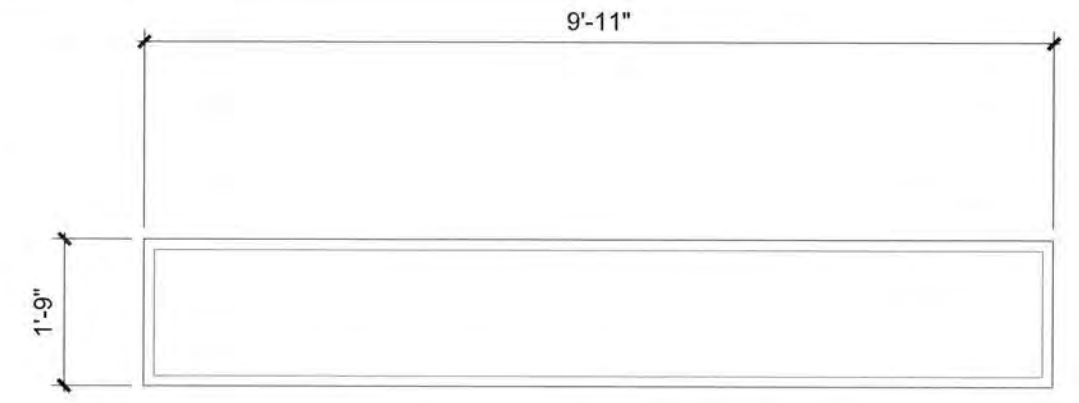
EAST WALL SIGNAGE

NOT TO SCALE
 *INTERNALLY ILLUMINATED WALL SIGN



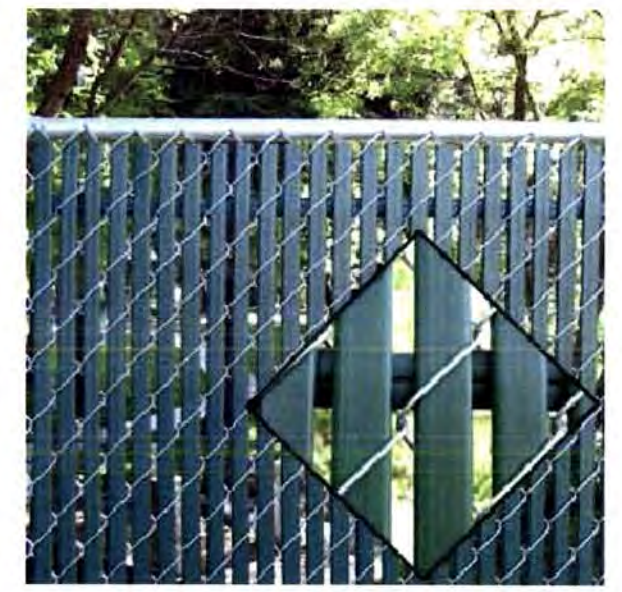
WEST WALL SIGNAGE

NOT TO SCALE
 *INTERNALLY ILLUMINATED WALL SIGN



WEST DRIVE-UP CANOPY SIGNAGE

NOT TO SCALE
 *LED MESSAGE CENTER



FENCE AT NORTH PROPERTY LINE

NOT TO SCALE
 *CHAIN LINK WITH PVC SLATS



ATM SIGNAGE AT DRIVE-UP EQUIPMENT

NOT TO SCALE
 *INTERNALLY ILLUMINATED WALL SIGN

PROPOSED EXTERIOR SIGNAGE

BLACK HILLS FEDERAL CREDIT UNION
 DOWNTOWN MEMBER SERVICE CENTER
 RAPID CITY, SD