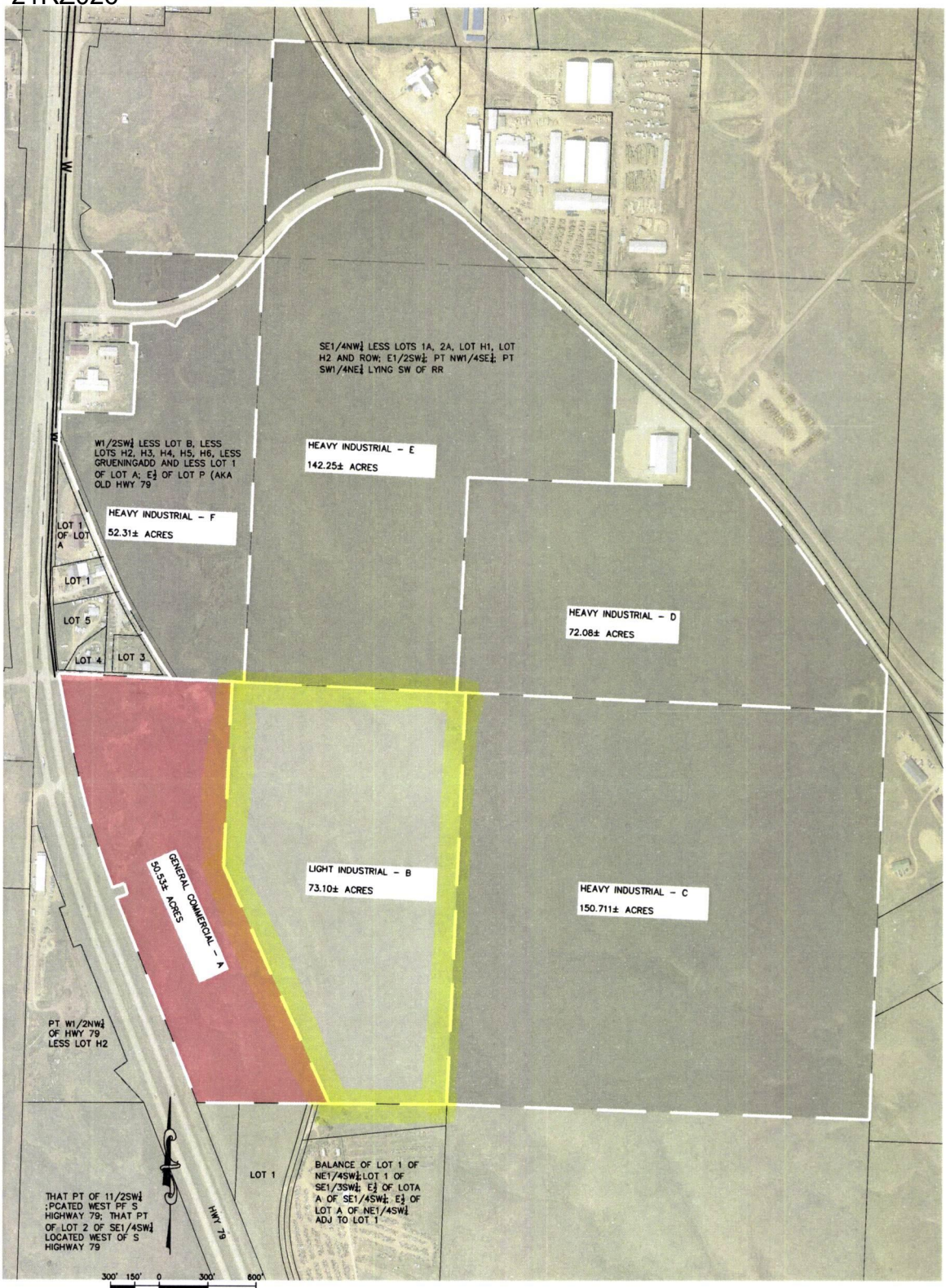


Case No. 21RZ026

Legal Description:

A portion of E1/2; NW1/4 E of HWY 79 less Lot H2, Section 29, T1N, R8E, BHM, Pennington County, South Dakota, more fully described as follows: commencing at the Northwest corner of said portion of E1/2; NW ¼ E of HWY 79 Less Low H2 of Section 29, T2N, R8E, BHM, Pennington County, South Dakota; thence S87°21'16"E, a distance of 1074.24 feet the point of beginning; Thence first course: S87°21'16"E, a distance of 1,387.27 feet; Thence second course: S87°21'11"E, a distance of 56.38 feet; Thence third course: S02°33'38"W, a distance of 2,537.54 feet; Thence fourth course: N89°46'05"W, a distance of 725.83 feet; Thence fifth course: N24°10'16"W, a distance of 1,597 feet; Thence sixth course: N02°33'38"E, a distance of 1,142.71 feet to the point of beginning



SE1/4NW1/4 LESS LOTS 1A, 2A, LOT H1, LOT H2 AND ROW; E1/2SW1/4 PT NW1/4SE1/4 PT SW1/4NE1/4 LYING SW OF RR

HEAVY INDUSTRIAL - E
142.25± ACRES

W1/2SW1/4 LESS LOT B, LESS LOTS H2, H3, H4, H5, H6, LESS GRUENINGADD AND LESS LOT 1 OF LOT A; E1/2 OF LOT P (AKA OLD HWY 79)

HEAVY INDUSTRIAL - F
52.31± ACRES

LOT 1 OF LOT A
LOT 1
LOT 5
LOT 4
LOT 3

HEAVY INDUSTRIAL - D
72.08± ACRES

GENERAL COMMERCIAL - A
50.55± ACRES

LIGHT INDUSTRIAL - B
73.10± ACRES

HEAVY INDUSTRIAL - C
150.711± ACRES

PT W1/2NW1/4 OF HWY 79 LESS LOT H2

THAT PT OF 11/2SW1/4 LOCATED WEST PF S HIGHWAY 79; THAT PT OF LOT 2 OF SE1/4SW1/4 LOCATED WEST OF S HIGHWAY 79

LOT 1
BALANCE OF LOT 1 OF NE1/4SW1/4; LOT 1 OF SE1/3SW1/4; E1/2 OF LOT A OF SE1/4SW1/4; E1/2 OF LOT A OF NE1/4SW1/4 ADJ TO LOT 1

300' 150' 0 300' 600'
SCALE: 1" = 600'

BLACK HILLS INDUSTRIAL CENTER
ZONING EXHIBIT
HWY 79
PENNINGTON COUNTY
DECEMBER 08, 2021



628 1/2 6th Street, Suite 201 | Rapid City, SD 57701
Phone: (605) 791-5866 | Fax: (605) 791-5863
www.ktmdesign.com
CIVIL ENGINEERING | LAND SURVEYING
LAND PLANNING | PROJECT MANAGEMENT
CONSTRUCTION ADMINISTRATION