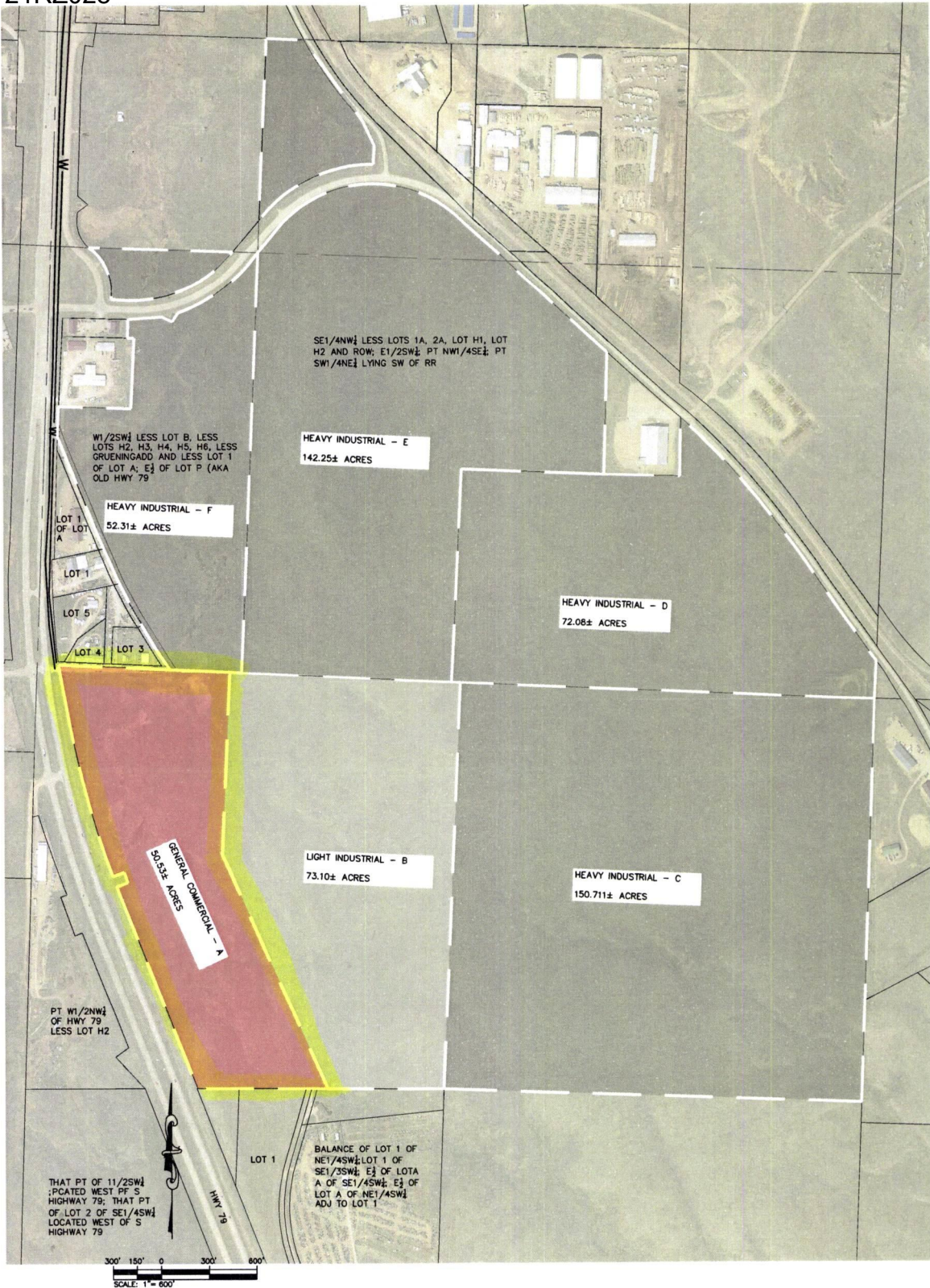


Case No. 21RZ028

**Legal Description:**

Portion of E1/2; NW1/4 E of HWY 79 less Lot H2, Section 29, T1N, R8E, BHM, Pennington County, South Dakota, more fully described as follows: Commencing at the Northwest corner of said portion of E1/2; NW ¼ E of HWY 79 Less Low H2 of Section 29, T2N, R8E, BHM, Pennington County, South Dakota; being the point of beginning; Thence first course: S87°21'16"E, a distance of 1,074.24 feet; Thence second course: S02°33'38"W, a distance of 1,142.71 feet; Thence third course: S24°10'16"E, a distance of 1,597.16 feet; Thence fourth course: N89°46'05"W, a distance of 557.61 feet; Thence fifth course: S89°56'20"W, a distance of 258.89 feet; Thence sixth course: N21°41'15"W, a distance of 1,311.89 feet; Thence seventh course: N21°26'01"W, a distance of 41.46 feet; Thence eighth course: N70°20'14"E, a distance of 73.34 feet; Thence ninth course: N19°19'43"W, a distance of 66.86 feet; Thence tenth course: S70°59'17"W, a distance of 75.19 feet; Thence eleventh course: On a non-tangent curve turning to the right with an arc length of 1,026 feet, with a radius of 5,960.21 feet, with a chord bearing of N15°32'46"W, with a chord length of 1,025.3 feet; Thence twelfth course" N10°21'46"W, a distance of 326.58 feet; Thence thirteenth course: N06°35'12"W; a distance of 16.50 feet to the point of beginning



**BLACK HILLS INDUSTRIAL CENTER  
ZONING EXHIBIT**  
HWY 79  
PENNINGTON COUNTY  
DECEMBER 08, 2021



628 1/2 6th Street, Suite 201 Rapid City, SD 57701  
Phone: (605) 791-5866 | Fax: (605) 791-5863  
www.ktmgroup.com  
CIVIL ENGINEERING | LAND SURVEYING  
LAND PLANNING | PROJECT MANAGEMENT  
CONSTRUCTION ADMINISTRATION