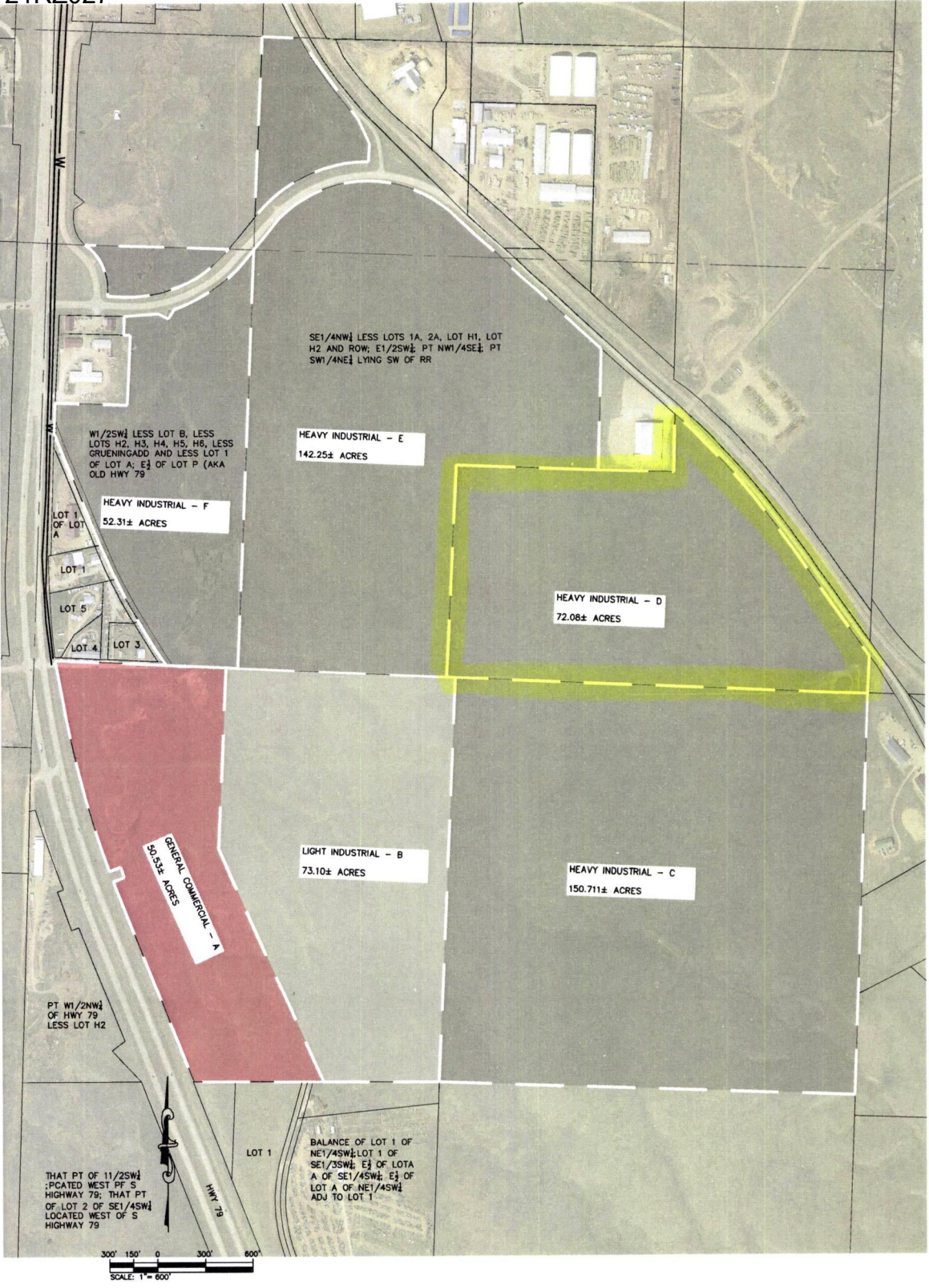


Case No. 21RZ027

**Legal Description:**

The SW1/4 SE1/4 and portion of E1/2 SE ¼ lying southwest of railroad, Section 20, T1N, R8E, BHM, Pennington County, South Dakota, more fully described as follows: Commencing at the Southeast corner of Section 20, T2N, R8E, BHM, Pennington County, South Dakota; being the point of beginning; Thence first course: N88°12'30"W, a distance of 225.01 feet; Thence second course: N87°21'16"W, a distance of 2,364.70 feet; Thence third course: N87°21'11"W, a distance of 56.38 feet; Thence fourth course: N02°54'12"E, a distance of 1,330.08 feet; Thence fifth course: S87°41'31"E, a distance of 890.39 feet; Thence sixth course: S88°25'31"E, a distance of 474.59 feet; Thence seventh course: N01°14'02"E, a distance of 361.37 feet; Thence eighth course: On a non-tangent curve turning to the right with an arc length of 1,054.11 feet, with a radius of 4,637.38 feet, with a chord bearing of S41°31'48"E, with a chord length of 1,051.8 feet; Thence ninth course: S35°23'16"E, a distance of 895.14 feet; Thence tenth course: S02°44'25"W, a distance of 13.18 feet; Thence eleventh course: S02°44'19"W, a distance of 229.47 feet to the point of beginning



**BLACK HILLS INDUSTRIAL CENTER**  
**ZONING EXHIBIT**  
 HWY 79  
 PENNINGTON COUNTY  
 DECEMBER 08, 2021



628 1/2 6th Street, Suite 201, Rapid City, SD 57701  
 Phone: (605) 791-5866 | Fax: (605) 791-5863  
[www.ktmcorp.com](http://www.ktmcorp.com)  
 CIVIL ENGINEERING | LAND SURVEYING  
 LAND PLANNING | PROJECT MANAGEMENT