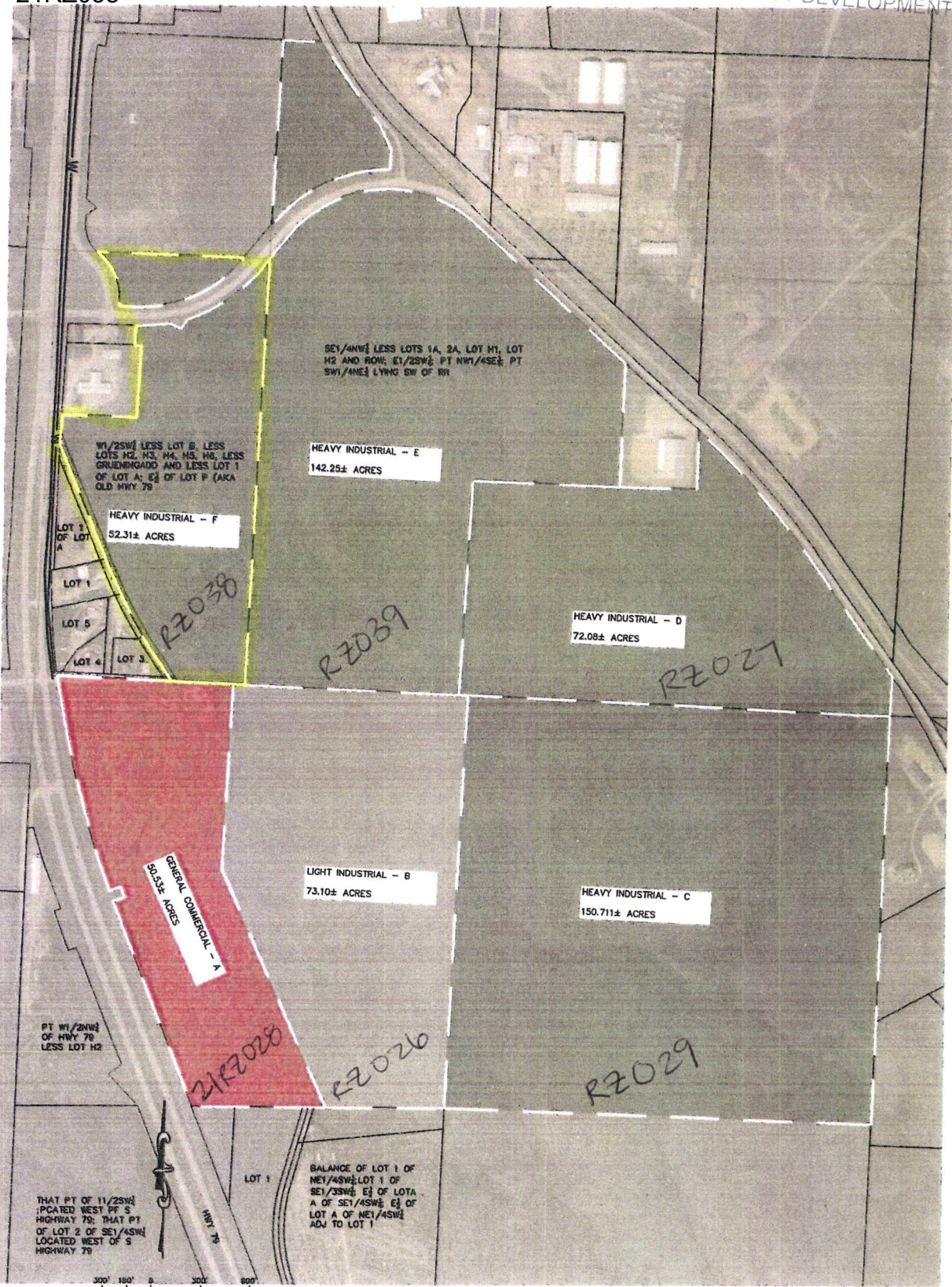


Case No. 21RZ038

Legal Description:

The W1/2 of the SW1/4 less Lot B , less Lots H2, H3, H4, H5, H6, less Gruenig Addition and less Lot 1 of Lot A; and the E1/2 of Lot P (AKA Old HWY 79), all located in Section 20, T1N, R8E, BHM, Pennington County, South Dakota



BLACK HILLS INDUSTRIAL CENTER ZONING EXHIBIT

21RZ038

HWY 79
PENNINGTON COUNTY
DECEMBER 08, 2011



648 E. Hill Street, Suite 201 | Rapid City, SD 57701
Phone: (605) 791-5565 | Fax: (605) 791-5563
www.ktmdesign.com
Civil Engineering | Land Surveying
Site Planning | Project Management
Construction Administration