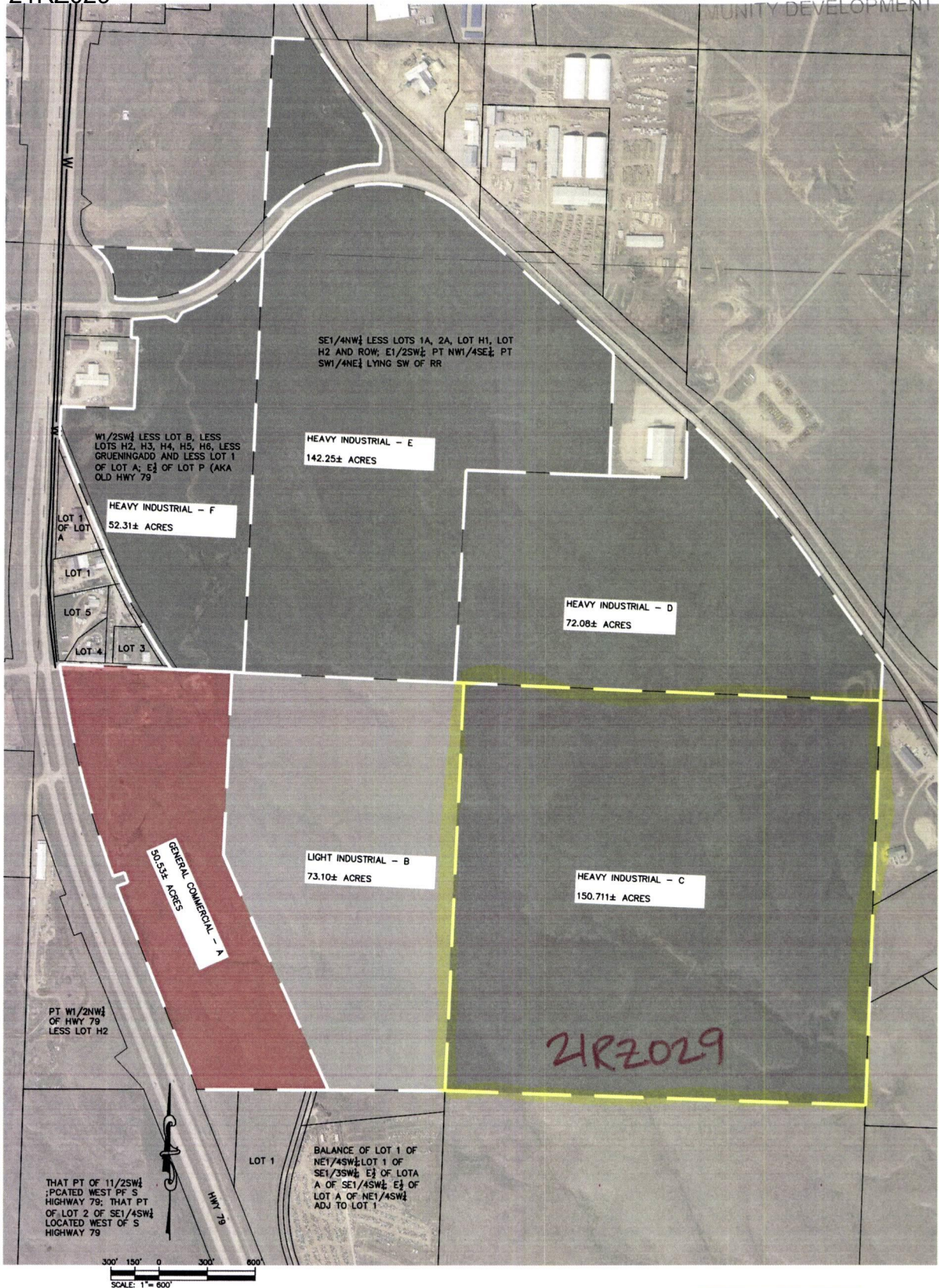


Case No. 21RZ029

Legal Description:

a portion of E1/2; NW1/4 E of HWY 79 less Lot H2 Section 29, T1N, R8E, BHM, Rapid City, Pennington County, South Dakota, more fully described as follows: Commencing at the Northeast corner of said portion of E1/2; NW 1/4 E of HWY 79 Less Lot H2 of Section 29, T1N, R8E, BHM, Rapid City, Pennington County, South Dakota; being the point of beginning; Thence first course: N88°12'30"W, a distance of 225.01 feet; Thence second course: N87°21'16"W, a distance of 2,364.70 feet; Thence third course: S02°33'38"W, a distance of 2,537.54 feet; Thence fourth course: S87°56'57"E, a distance of 2,612.14 feet; Thence fifth course: N02°03'03"E, a distance of 2,512.75 feet to the point of beginning



**BLACK HILLS INDUSTRIAL CENTER
ZONING EXHIBIT**
HWY 79
PENNINGTON COUNTY
DECEMBER 08, 2021

21RZ029
Revised