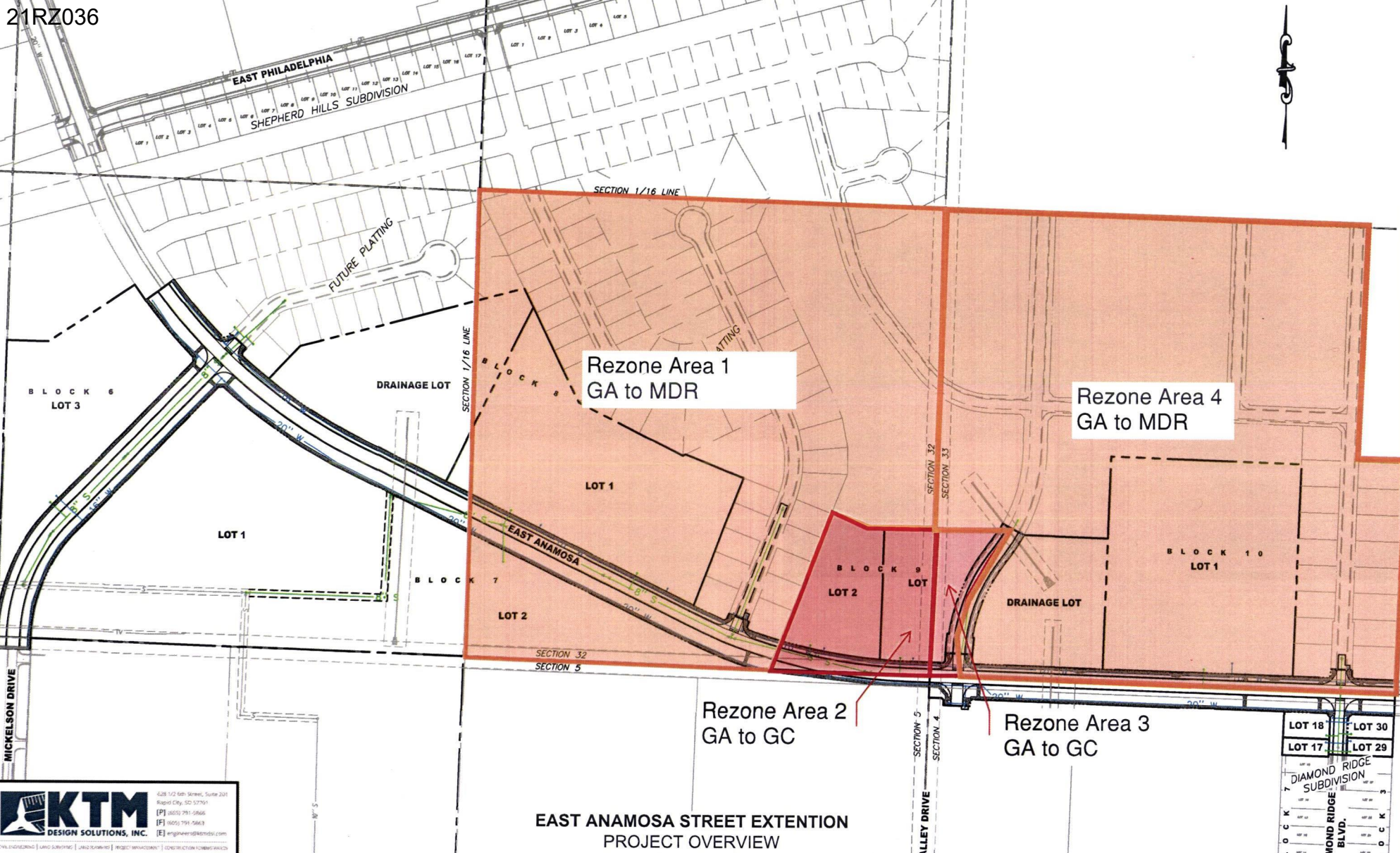


Case No. 21RZ036

**Legal Description:**

A portion of the SW1/4-SW1/4, Section 33, T2N, R8E, BHM, Rapid City, Pennington County, South Dakota, more fully described as follows: Commencing at the west 1/16th corner common to Sections 33, T2N, R8E, and Section 5, T1N, R8E, BHM, Rapid City, Pennington County, South Dakota, monumented by a 1 ¼ inch plastic cap LS6251 on a rebar, being the point of beginning; Thence first course: with the south line of said Section 33, N88°01'11"W, a distance of 1,243.28 feet; Thence second course: leaving said Section line, N2°05'28"E, a distance of 66.62 feet; Thence third course: N5°49'40"E, a distance of 51.29 feet to a curve; Thence fourth course: on a curve turning to the right with an arc length of 240.00 feet, with a radius of 500.00 feet, with a chord bearing of N22°30'14"E, with a chord length of 237.70 feet; Thence fifth course: N36°15'16"E, a distance of 34.94 feet; Thence sixth course: on a non-tangent curve turning to the left with an arc length of 66.84 feet, with a radius of 500.00 feet, with a chord bearing of N32°25'29"E, with a chord length of 66.79 feet; Thence seventh course: N61°24'18"W, a distance of 34.00 feet; Thence eighth course: on a curve turning to the right with an arc length of 29.23 feet, with a radius of 466.00 feet, with a chord bearing of S30°23'31"W, with a chord length of 29.23 feet; Thence ninth course: N88°11'11"W, a distance of 178.41 feet to a point on the west line of aforementioned Section 33; Thence tenth course: with said west line of Section 33, N1°48'49"E, a distance of 909.25 feet to the south 1/16th corner of Sections 32 and 33; Thence eleventh course: leaving said west line, and with the south 1/16th line of said Section 33, S88°00'54"E, a distance of 1,201.88 feet; Thence twelfth course: leaving said south 1/16th line, S2°08'20"W, a distance of 666.97 feet; Thence thirteenth course: S88°01'32"E, a distance of 127.19 feet to a point on the west 1/16th line of aforementioned Section 33; Thence fourteenth course: with said west 1/16th line, S1°53'40"W, a distance of 658.05 feet to the point of beginning



Rezone Area 1  
GA to MDR

Rezone Area 4  
GA to MDR

Rezone Area 2  
GA to GC

Rezone Area 3  
GA to GC

**EAST ANAMOSA STREET EXTENSION  
PROJECT OVERVIEW**



628 1/2 6th Street, Suite 201  
 Rapid City, SD 57701  
 [P] 605 791-5866  
 [F] 605 791-5863  
 [E] [engineers@ktmids.com](mailto:engineers@ktmids.com)

CIVIL ENGINEERING | LAND SURVEYING | LAND PLANNING | PROJECT MANAGEMENT | CONSTRUCTION ADMINISTRATION

LOT 18	LOT 30
LOT 17	LOT 29
DIAMOND RIDGE SUBDIVISION	
WOND RIDGE BLVD.	DOCK



RAPID CITY, PIERRE AND EASTERN RAILROAD

SHEPHERD HILLS DEVELOPMENT EDGE

EAST NORTH STREET

NORTH CREEK DR

ANAMOSA STREET

MENARDS

TALLGRASS APARTMENT COMPLEX

PHILADELPHIA STREET

RAPID CITY AREA SCHOOL DISTRICT

PHILADELPHIA ST.

WESTERN DAKOTA TECHNICAL COLLEGE

HIGHWAY 44

STAR OF THE WEST





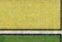


NORTH VALLEY DRIVE

HOMESTEAD STREET

ANAMOSA ST.

PRELIMINARY, NOT FOR CONSTRUCTION  
SUBJECT TO CHANGE  
NOVEMBER UPDATE

LEGEND

-  MULTI-USE TRAIL
-  STORM WATER DETENTION
-  MULTI-FAMILY
-  COMMERCIAL
-  SINGLE FAMILY RESIDENTIAL
-  OPEN SPACE
-  PUBLIC LAND

# SHEPHERD *hills*

## MASTER PLAN