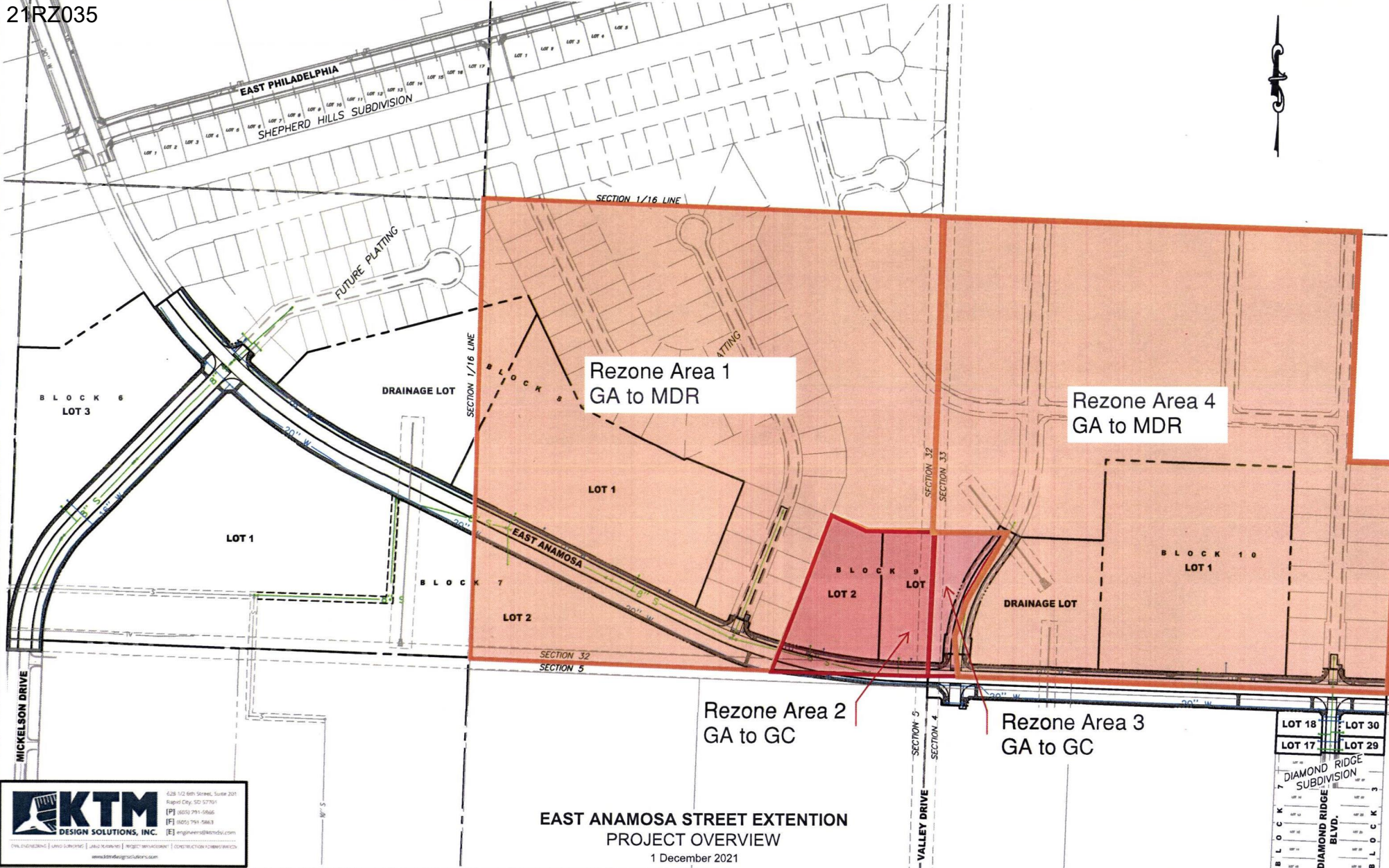


Case No. 21RZ035

Legal Description:

A portion of the SW1/4-SW1/4, Section 33, T2N, R8E, BHM, Rapid City, Pennington County, South Dakota, more fully described as follows: Commencing at the Southwest Corner of Section 33, T2N, R8E, BHM, Rapid City, Pennington County, South Dakota, monumented by a 1949 BLM brass cap, being the point of beginning; Thence first course: with the west line of said Section 33, N01°48'49"E, a distance of 415.94 feet, Thence second course: leaving said Section line, S88°11'11"E, a distance of 178.41 feet to a non-tangent curve; Thence third course: on a curve turning to the left with an arc length of 29.23 feet, with a radius of 466.00 feet, with a chord bearing of N30°23'31"E, with a chord length of 29.23 feet; Thence fourth course: S61°24'18"E, a distance of 34.00 feet to a non-tangent curve; Thence fifth course: on a curve turning to the right with an arc length of 66.84 feet, with a radius of 500.00 feet, with a chord bearing of S32°25'29"W, with a chord length of 66.79 feet to a curve; Thence sixth course: S36°15'16"W, a distance of 34.94 feet; Thence seventh course: on a curve turning to the left with an arc length of 240.00 feet, with a radius of 500.00 feet, with a chord bearing of S22°30'14"W, with a chord length of 237.70 feet; Thence eighth course: S05°49'40"W, a distance of 51.29 feet; Thence ninth course: S02°05'28"W, a distance of 66.62 feet to a point on the south line of aforementioned Section 33; Thence tenth course: with the south line of said Section 33, N88°04'36"W, a distance of 81.08 feet to the point of beginning



Rezone Area 1
GA to MDR

Rezone Area 4
GA to MDR

Rezone Area 2
GA to GC

Rezone Area 3
GA to GC

**EAST ANAMOSA STREET EXTENSION
PROJECT OVERVIEW**

1 December 2021

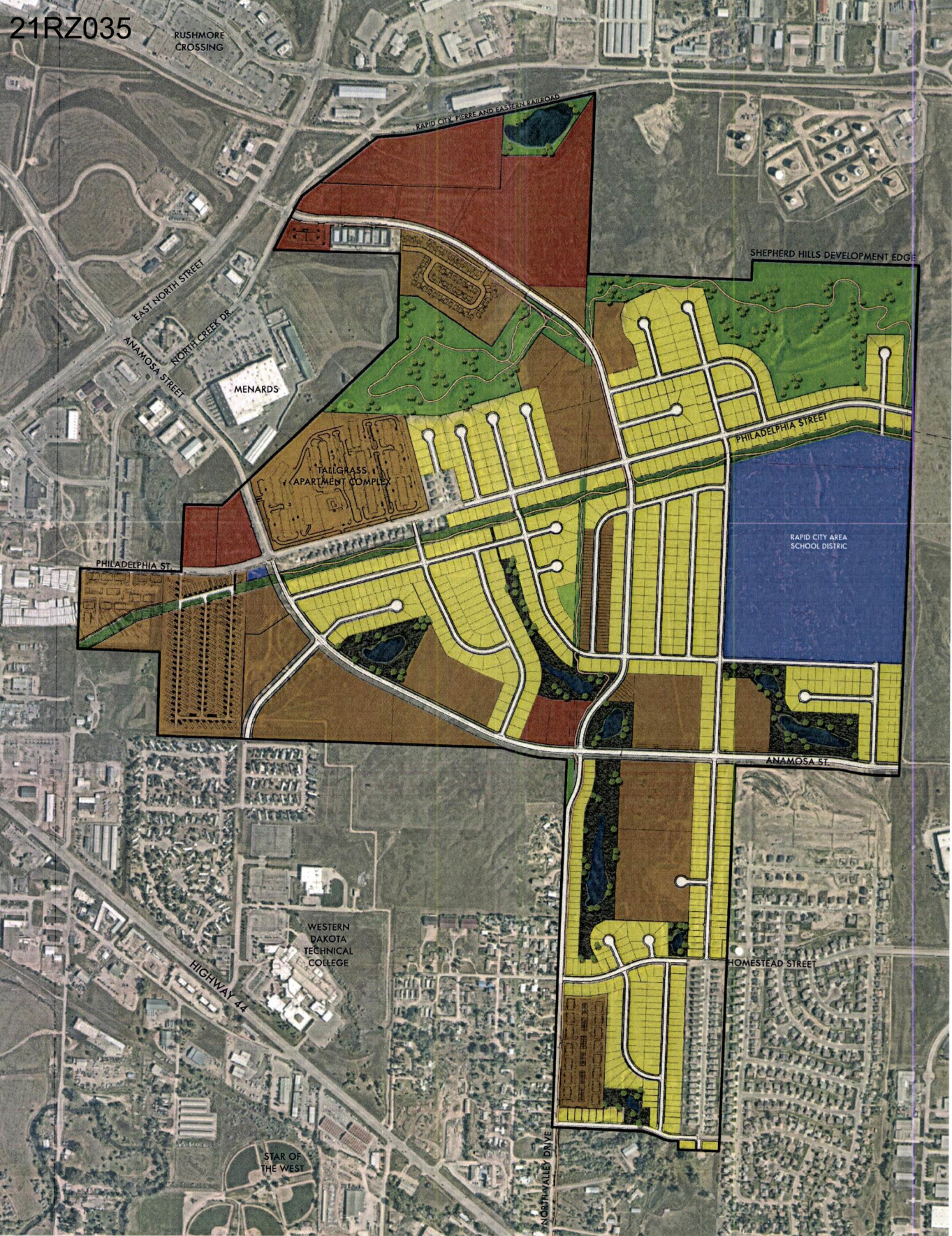
KTM
DESIGN SOLUTIONS, INC.

628 1/2 8th Street, Suite 201
Royal Oak, MI 48067
 [P] (248) 791-0866
 [F] (248) 791-5863
 [E] engineers@ktdms.com

PHOTOGRAPHY | LAND SURVEYING | LAND DEVELOPMENT | PROJECT MANAGEMENT | CONSTRUCTION MANAGEMENT





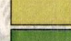


www.ktmdesignsolutions.com

LOT 18	LOT 30
LOT 17	LOT 29
DIAMOND RIDGE SUBDIVISION	
BLOCK 7	BLOCK 8
DIAMOND RIDGE BLVD.	



PRELIMINARY, NOT FOR CONSTRUCTION
SUBJECT TO CHANGE
NOVEMBER UPDATE

LEGEND

-  MULTI-USE TRAIL
-  STORM WATER DETENTION
-  MULTI-FAMILY
-  COMMERCIAL
-  SINGLE FAMILY RESIDENTIAL
-  OPEN SPACE
-  PUBLIC LAND

SHEPHERD *hills*

MASTER PLAN