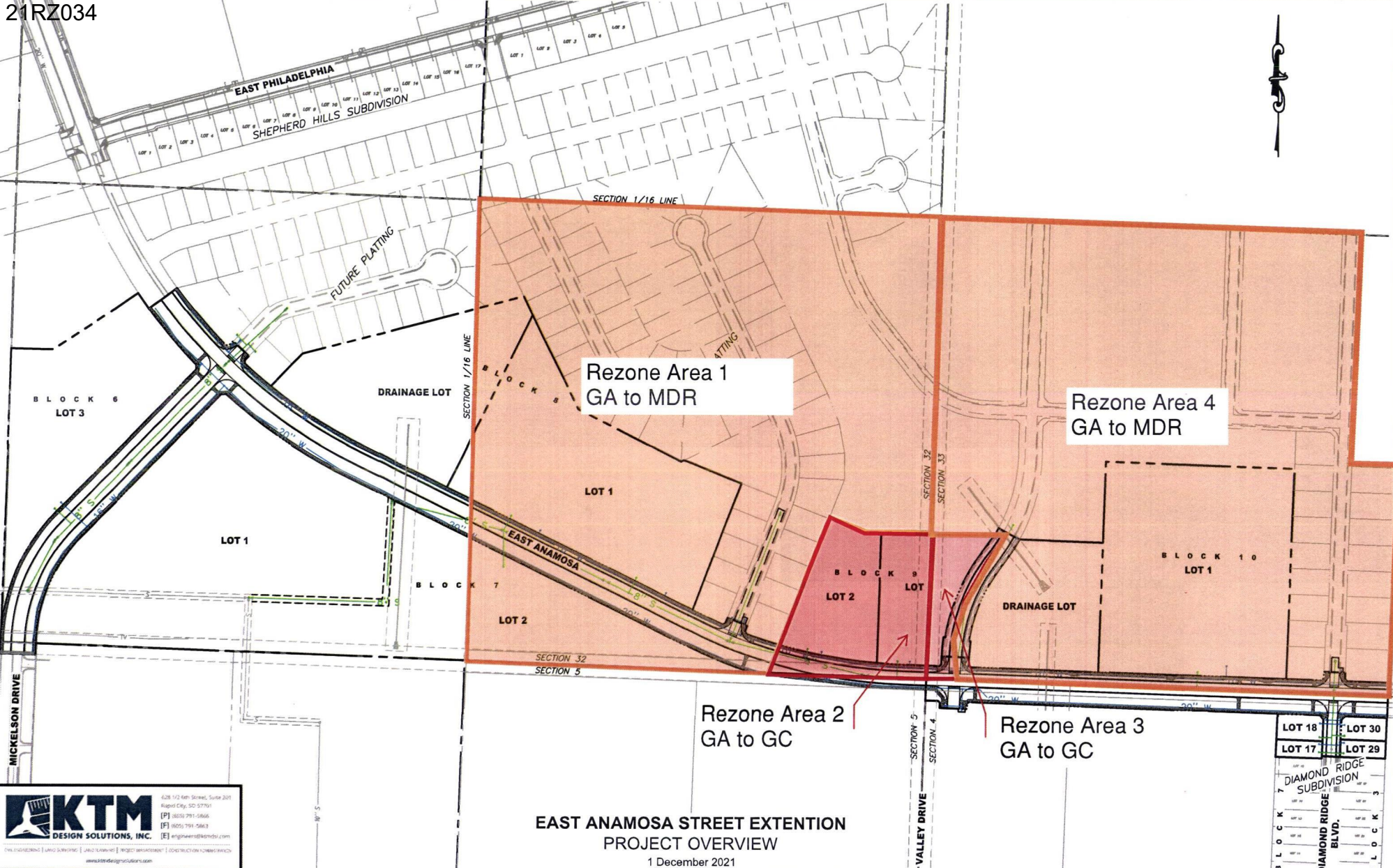


Case No. 21RZ034

Legal Description:

A portion of the SE1/4-SE1/4, Section 32, T2N, R8E, BHM, Rapid City, Pennington County, South Dakota, more fully described as follows: Commencing at the southeast corner of Section 32, T2N, R8E, BHM, Rapid City, Pennington County, South Dakota, monumented by a 1949 BLM brass cap, being the point of beginning; Thence first course: with the south line of said Section 32, N87°54'50"W, a distance of 455.82 feet, Thence second course: leaving said Section line, N21°28'22"E, a distance of 478.46 feet; Thence third course: S68°31'38"E, a distance of 109.38 feet; Thence fourth course: S89°47'52"E, a distance of 191.84 feet to a point on the east line of aforementioned Section 32; Thence fifth course: with the east line of said Section 32, S01°48'49"W, a distance of 415.94 feet to the point of beginning



Rezone Area 1
GA to MDR

Rezone Area 4
GA to MDR

Rezone Area 2
GA to GC

Rezone Area 3
GA to GC

**EAST ANAMOSA STREET EXTENTION
PROJECT OVERVIEW**

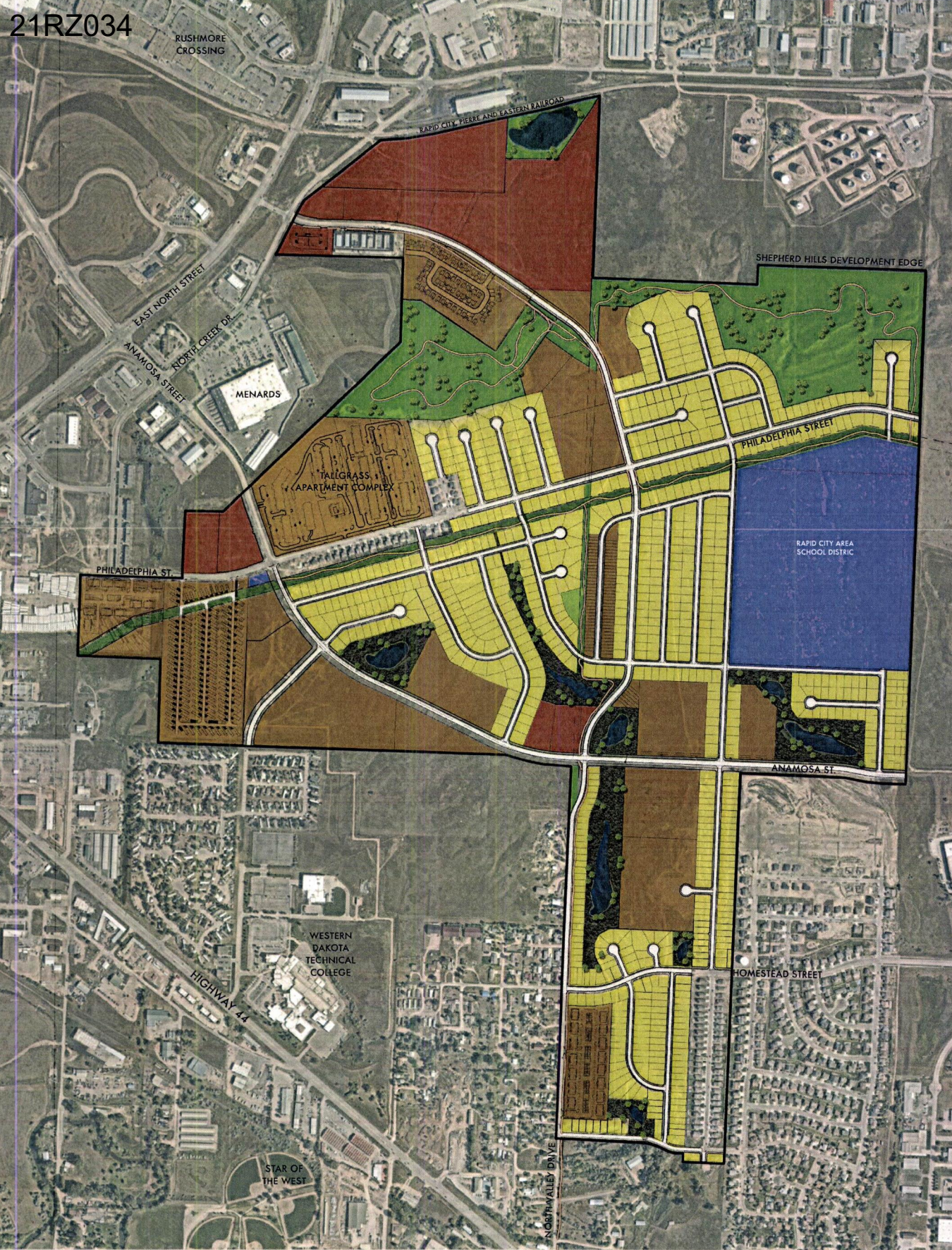
1 December 2021

KTM
DESIGN SOLUTIONS, INC.

428 1/2 Ken Street, Suite 201
Rapid City, SD 57701
 (P) 605.791.5866
 (F) 605.791.5863
 (E) eng@ktdesign.com

PHYSICIAN [] LAND SURVEYING [] LAND SURVEY [] PROJECT MANAGEMENT [] CONSTRUCTION MANAGEMENT []
www.ktdesign.com

LOT 18	LOT 30
LOT 17	LOT 29
DIAMOND RIDGE SUBDIVISION	
DIAMOND RIDGE BLVD.	
BLOCK 7	BLOCK 3



PRELIMINARY, NOT FOR CONSTRUCTION
 SUBJECT TO CHANGE
 NOVEMBER UPDATE

LEGEND

-  MULTI-USE TRAIL
-  STORM WATER DETENTION
-  MULTI-FAMILY
-  COMMERCIAL
-  SINGLE FAMILY RESIDENTIAL
-  OPEN SPACE
-  PUBLIC LAND

SHEPHERD *hills*

MASTER PLAN