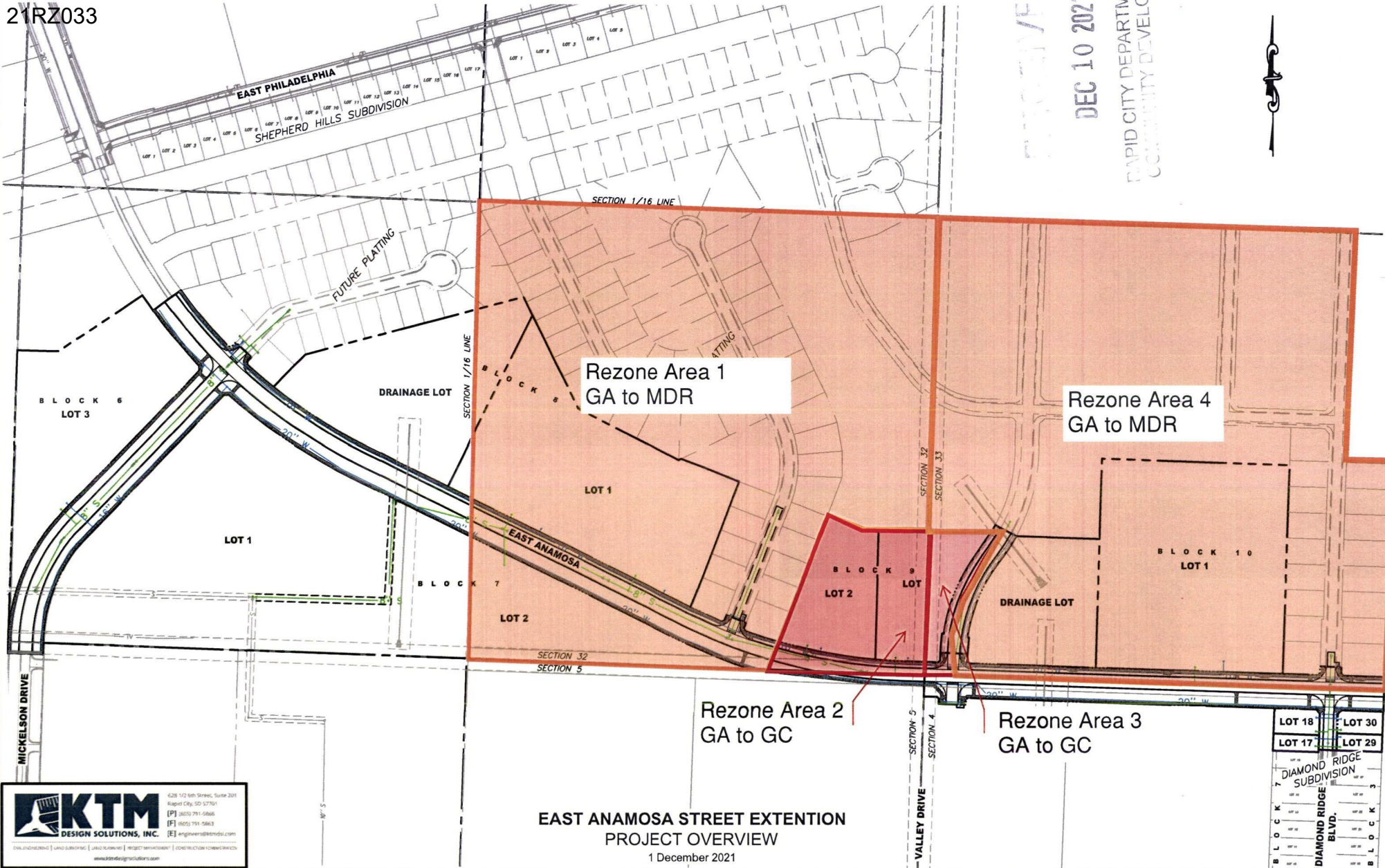


Case No. 21RZ033

**Legal Description:**

A portion of the SE1/4-SE1/4, Section 32, T2N, R8E, BHM, Rapid City, Pennington County, South Dakota. more fully described as follows: all of the SE1/4-SE1/4 of Section 32, T2N, R8E, BHM, Rapid City, Pennington County, South Dakota, excepting therefrom: Commencing at the southeast corner of Section 32, T2N, R8E, BHM, Rapid City, Pennington County, South Dakota, monumented by a 1949 BLM brass cap, being the point of beginning; Thence first course: with the south line of said Section 32, N87°54'50"W, a distance of 455.82 feet, Thence second course: leaving said Section line, N21°28'22"E, a distance of 478.46 feet; Thence third course: S68°31'38"E, a distance of 109.38 feet; Thence fourth course: S89°47'52"E, a distance of 191.84 feet to a point on the east line of aforementioned Section 32; Thence fifth course: with the east line of said Section 32, S01°48'49"W, a distance of 415.94 feet to the point of beginning

REVISED  
DEC 10 2021  
RAPID CITY DEPARTMENT OF  
COMMUNITY DEVELOPMENT



Rezone Area 1  
GA to MDR

Rezone Area 4  
GA to MDR

Rezone Area 2  
GA to GC

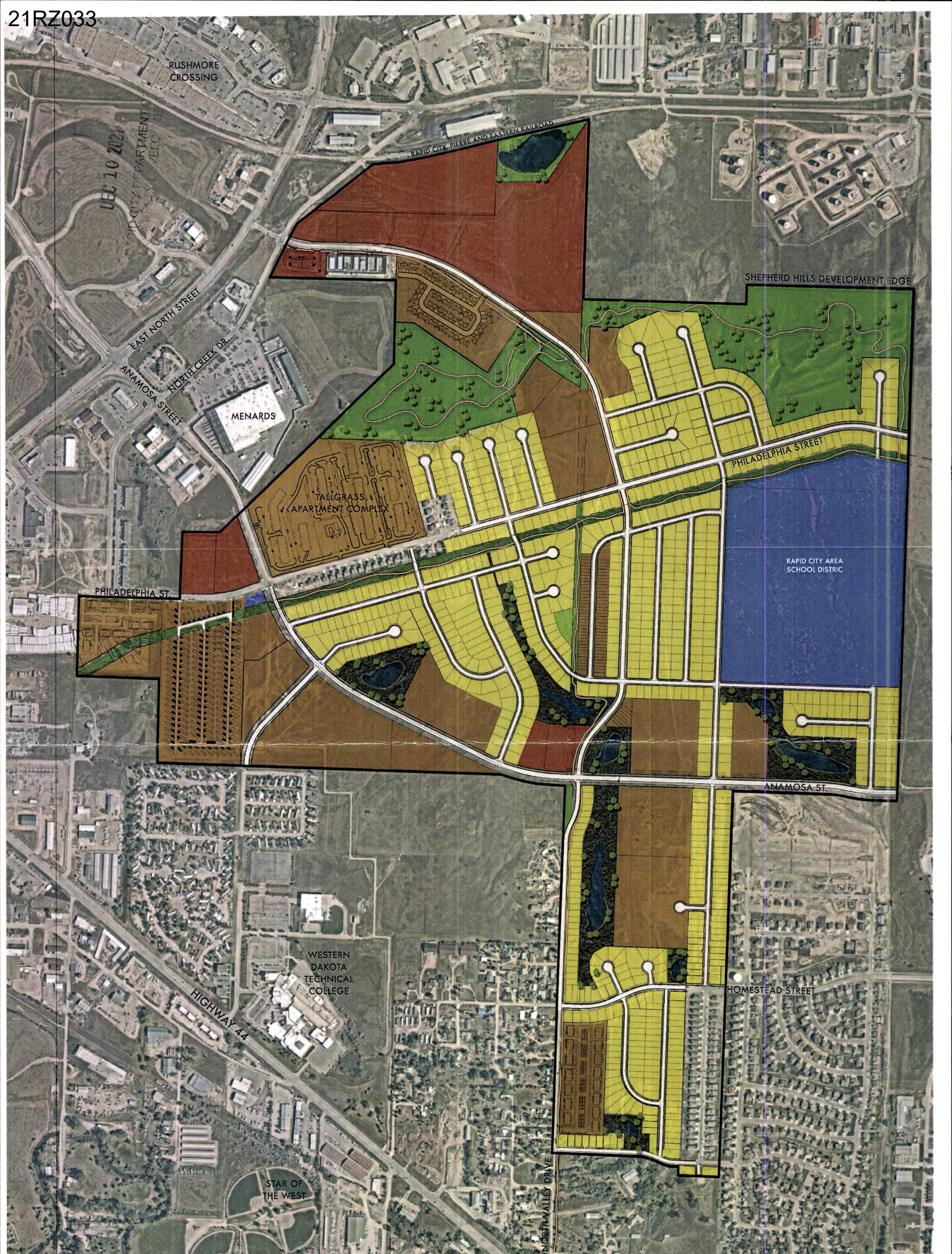
Rezone Area 3  
GA to GC

### EAST ANAMOSA STREET EXTENSION PROJECT OVERVIEW

1 December 2021

428 1/2 6th Street, Suite 201  
Rapid City, SD 57701  
PH 605.271.0866  
FX 605.271.5883  
E: [engineering@ktdesign.com](mailto:engineering@ktdesign.com) | [info@ktdesign.com](mailto:info@ktdesign.com) | [www.ktdesign.com](http://www.ktdesign.com)

LOT 18	LOT 30
LOT 17	LOT 29
DIAMOND RIDGE SUBDIVISION	
BLOCK 7	BLOCK 3
DIAMOND RIDGE BLVD.	
BLOCK 7	BLOCK 3



PRELIMINARY, NOT FOR CONSTRUCTION  
 SUBJECT TO CHANGE  
 NOVEMBER UPDATE

**LEGEND**

	MULTI-USE TRAIL
	STORM WATER DETENTION
	MULTI-FAMILY
	COMMERCIAL
	SINGLE FAMILY RESIDENTIAL
	OPEN SPACE
	PUBLIC LAND

**DREAM DESIGN**  
 INTERNATIONAL, INC.

700' 350' 0 700'

SCALE: 1"=700'

# SHEPHERD *hills*

## MASTER PLAN