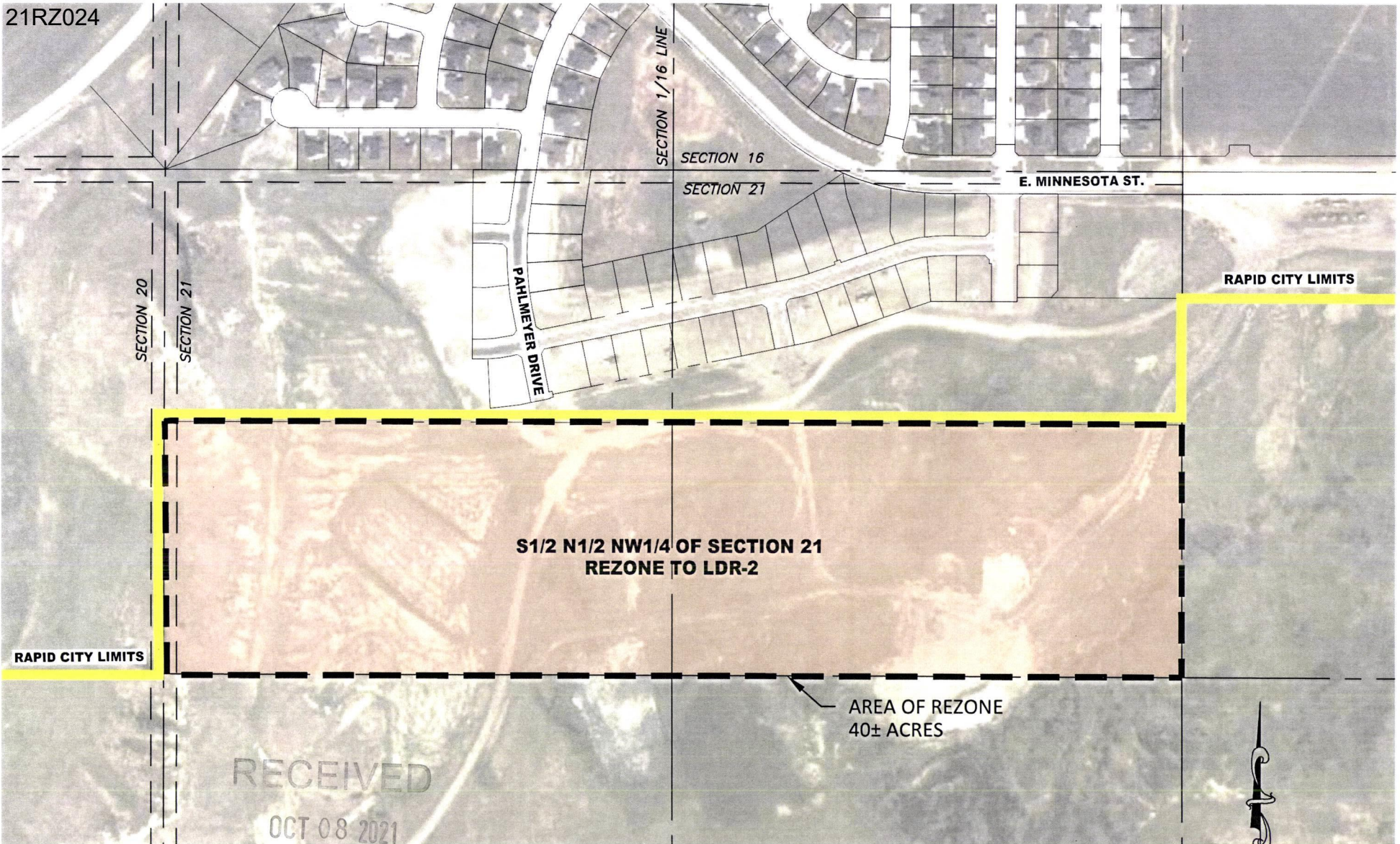


Case No. 21RZ024

Legal Description:

The S1/2 of the N1/2 of the NW1/4 of Section 21, located in Section 21, T1N, R8E, BHM, Pennington County, South Dakota

21RZ024

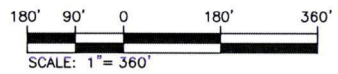


RAPID CITY DEPARTMENT OF
COMMUNITY DEVELOPMENT



628 1/2 6th Street, Suite 201, Rapid City, SD 57701
 Phone: (605) 791-5866 | Fax: (605) 791-5863
 www.ktmdesignsolutions.com
 CIVIL ENGINEERING | LAND SURVEYING
 LAND PLANNING | PROJECT MANAGEMENT
 CONSTRUCTION ADMINISTRATION

REZONE EXHIBIT
 S1/2N1/2NW1/4 OF SECTION 21
 LOCATED IN SECTION 21, T1N, R8E, BHM
 PENNINGTON COUNTY, SOUTH DAKOTA



**PRELIMINARY
FOR REVIEW ONLY**