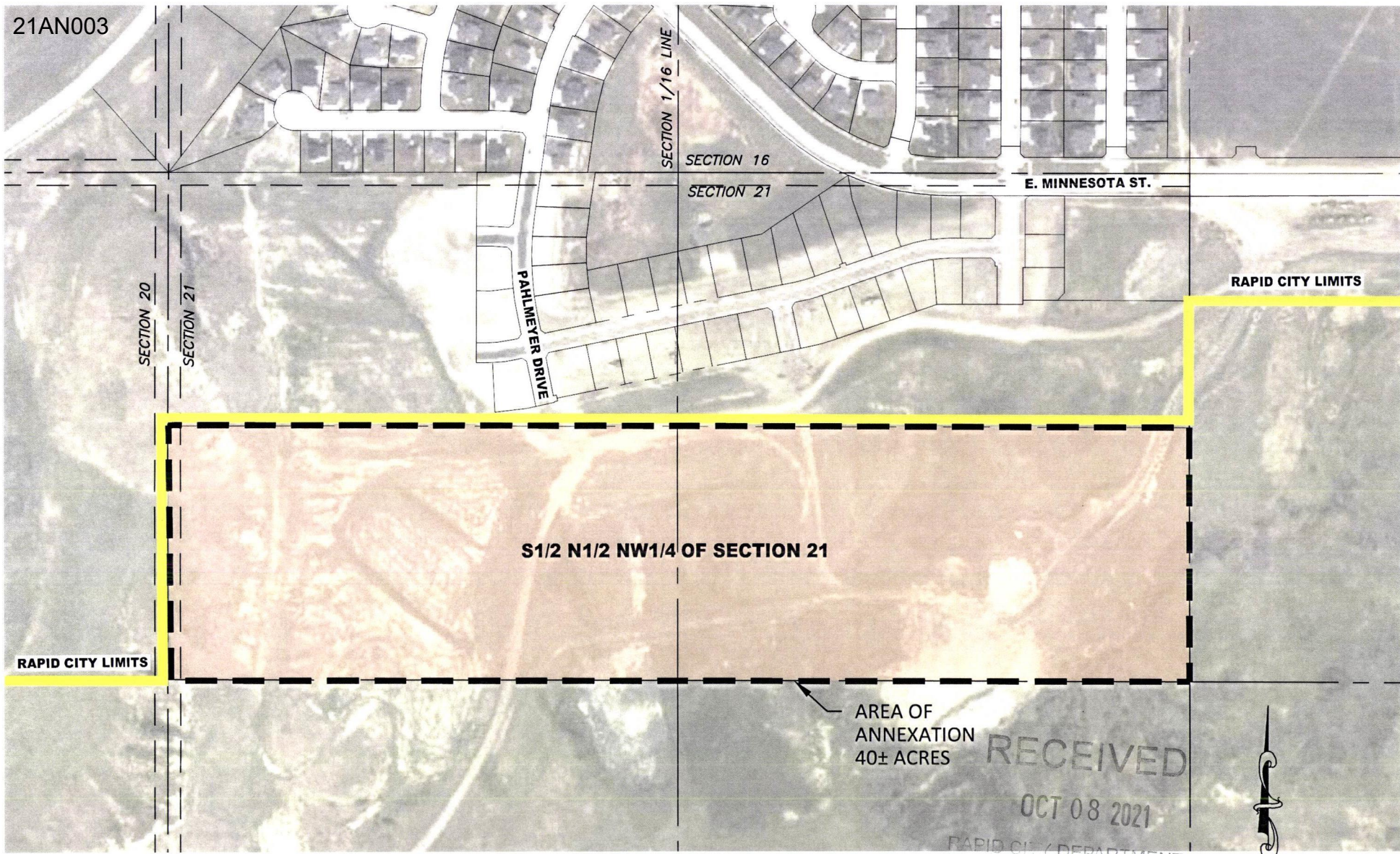


Case No. 21AN003

Legal Description:

The S1/2 of the N1/2 of the NW1/4 of Section 21, T1N, R8E, BHM, Pennington County,
South Dakota

21AN003



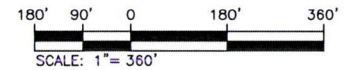
S1/2 N1/2 NW1/4 OF SECTION 21

AREA OF
ANNEXATION
40± ACRES

RECEIVED

OCT 08 2021

RAPID CITY DEPARTMENT OF
COMMUNITY DEVELOPMENT



**PRELIMINARY
FOR REVIEW ONLY**



628 1/2 6th Street, Suite 201, Rapid City, SD 57701
Phone: (605) 791-5866 | Fax: (605) 791-5863
www.ktmdesignsolutions.com

CIVIL ENGINEERING | LAND SURVEYING
LAND PLANNING | PROJECT MANAGEMENT
CONSTRUCTION ADMINISTRATION

ANNEXATION EXHIBIT
S1/2N1/2NW1/4 OF SECTION 21
LOCATED IN SECTION 21, T1N, R8E, BHM
PENNINGTON COUNTY, SOUTH DAKOTA