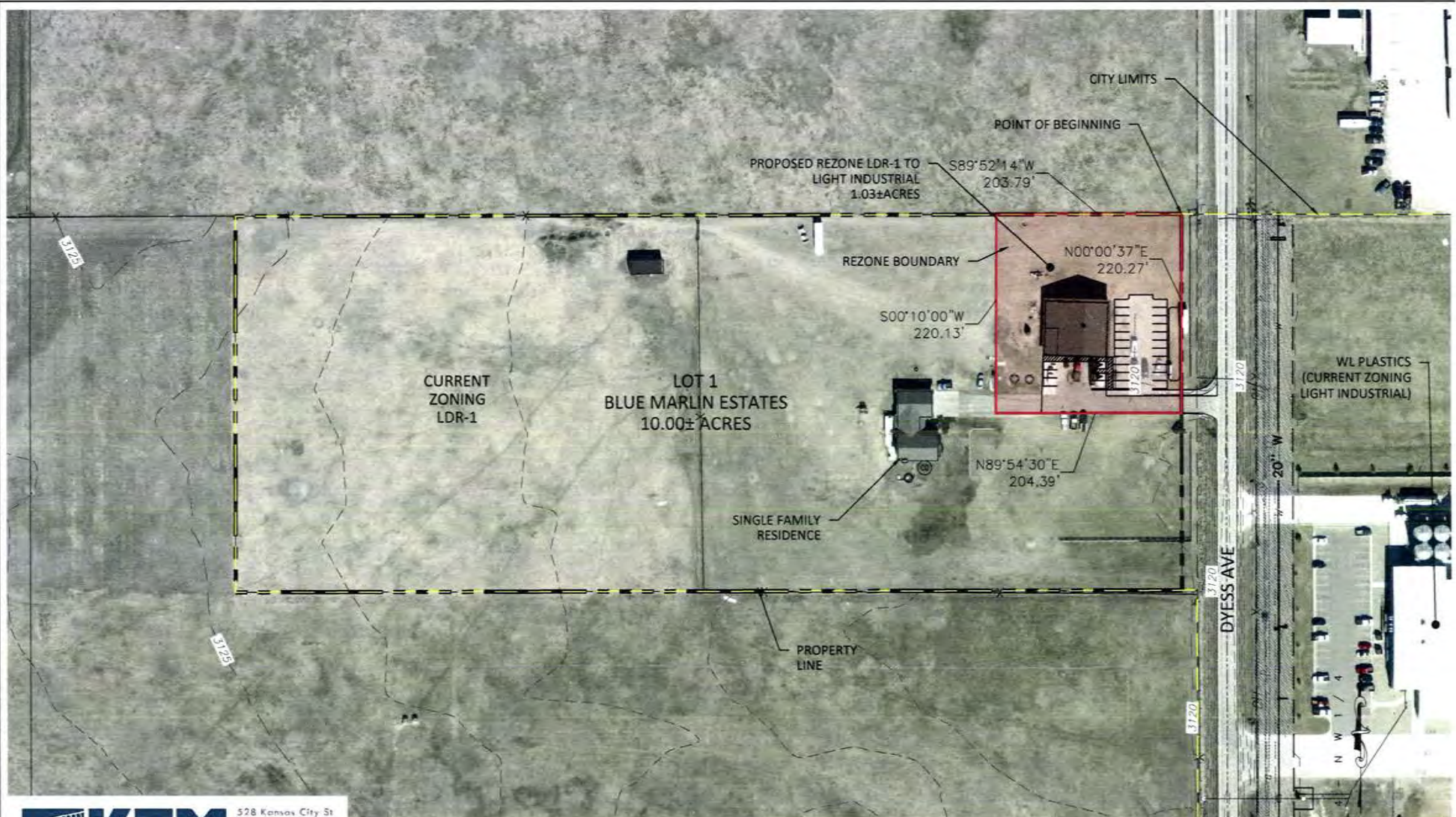


Case No. 16RZ014

**Legal Description:**

That part of Lot 1, Blue Marlin Estates located in, Section 20, T2N, R8E, BHM, Rapid City, Pennington County, South Dakota. More fully described as follows: Commencing at the northeast corner of Lot 1 of Blue Marlin Estates located in Section 20, T2N, R8E, BHM, Rapid City, Pennington County, South Dakota; the point of beginning; Thence, first course: S 89°52'14" W, a distance of 203.79';; Thence, second course: S 00°10'00" W, a distance of 220.13';; Thence, third course: S 89°54'30" E, a distance of 204.39';; Thence, fourth course: N 00°00'37" E a distance of 220.27', to the said point of beginning



**KTM**  
 DESIGN SOLUTIONS, INC.  
 528 Kansas City St  
 Rapid City, SD 57701  
 [P] 605.791.5866  
 [F] 605.791.5863  
 [E] amy.kramer@ktdms.com

CIVIL ENGINEERING | LAND PLANNING | CONSTRUCTION ADMINISTRATION  
 www.ktmdesignsolutions.com

**RNJ AUTO REZONE EXHIBIT**  
 3775 DYESS AVE  
 RAPID CITY, SOUTH DAKOTA  
 MAY 12, 2016



**PRELIMINARY  
 FOR REVIEW ONLY**