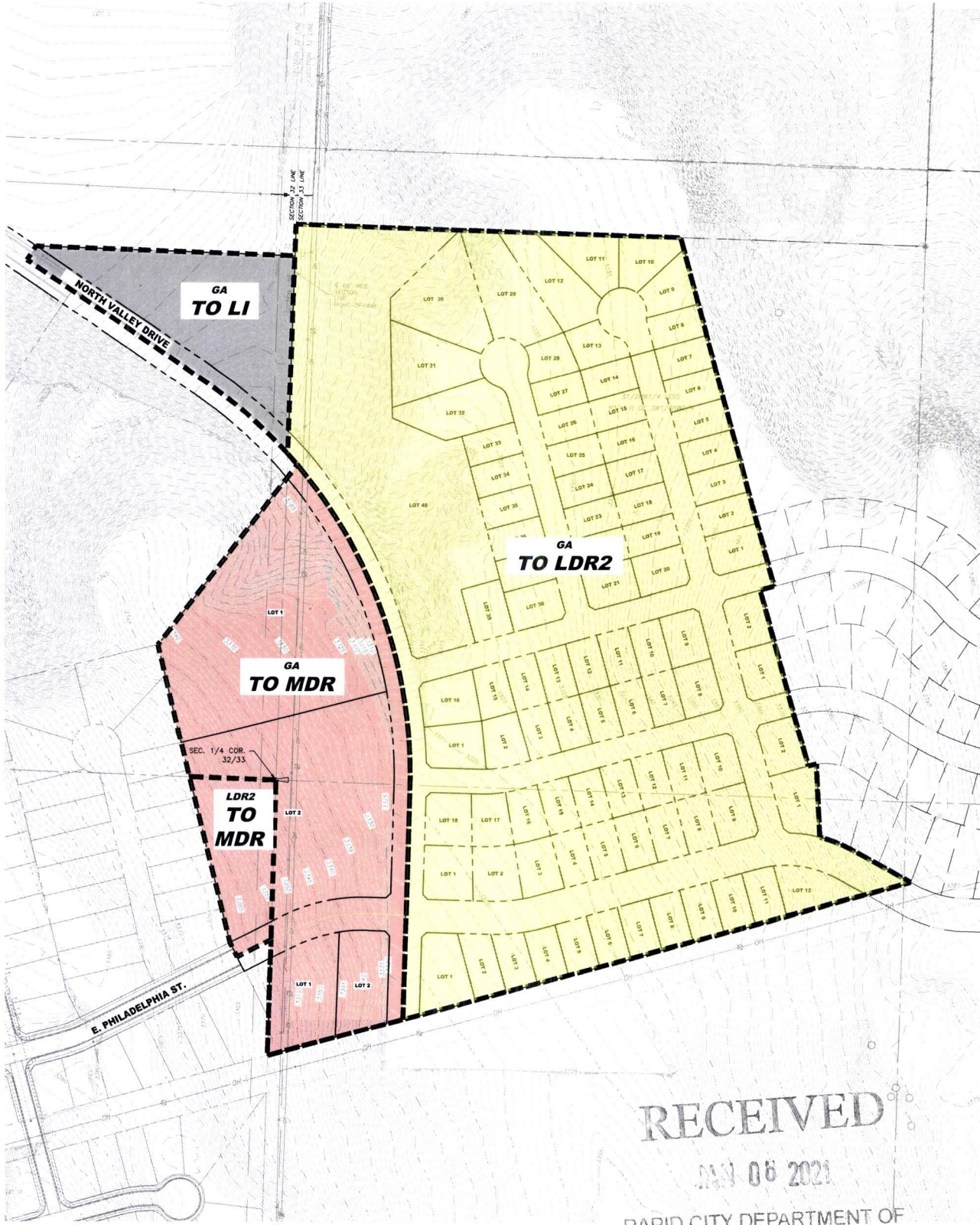


Case No. 21RZ005

**Legal Description:**

A portion of the SE1/4 of the NE1/4 Section 32 and portions of SW1/4 of the NW1/4 and NW1/4 of the SW1/4 Section 33, T2N, R8E, BHM, Rapid City, Pennington County, South Dakota, more fully described as follows: Commencing at the 1/4 corner of Sections 32 and 33, T2N, R8E, BHM, Rapid City, Pennington County, South Dakota being monumented by a set granite stone 18"x12"x10", and the point of beginning; Thence first course: N87°55'36"W, a distance of 182.76 feet; Thence second course: N13°43'46"W, a distance of 285.65 feet; Thence third course: N37°48'36"E, a distance of 479.68 feet; Thence fourth course: On a curve turning to the right with an arc length of 741.58 feet, with a radius of 1000.00 feet, with a chord bearing of S19°13'42"E, with a chord length of 724.70 feet; Thence fifth course: S01°46'22"W, a distance of 482.06 feet; Thence sixth course: S74°59'16"W, a distance of 295.84 feet; Thence seventh course: N01°48'49"E, a distance of 579.95 feet to the point of beginning



**RECEIVED**  
 JAN 06 2021  
 RAPID CITY DEPARTMENT OF  
 COMMUNITY DEVELOPMENT

**LEGEND**

	LIGHT INDUSTRIAL
	MEDIUM DENSITY RESIDENTIAL
	LIGHT DENSITY RESIDENTIAL 2

