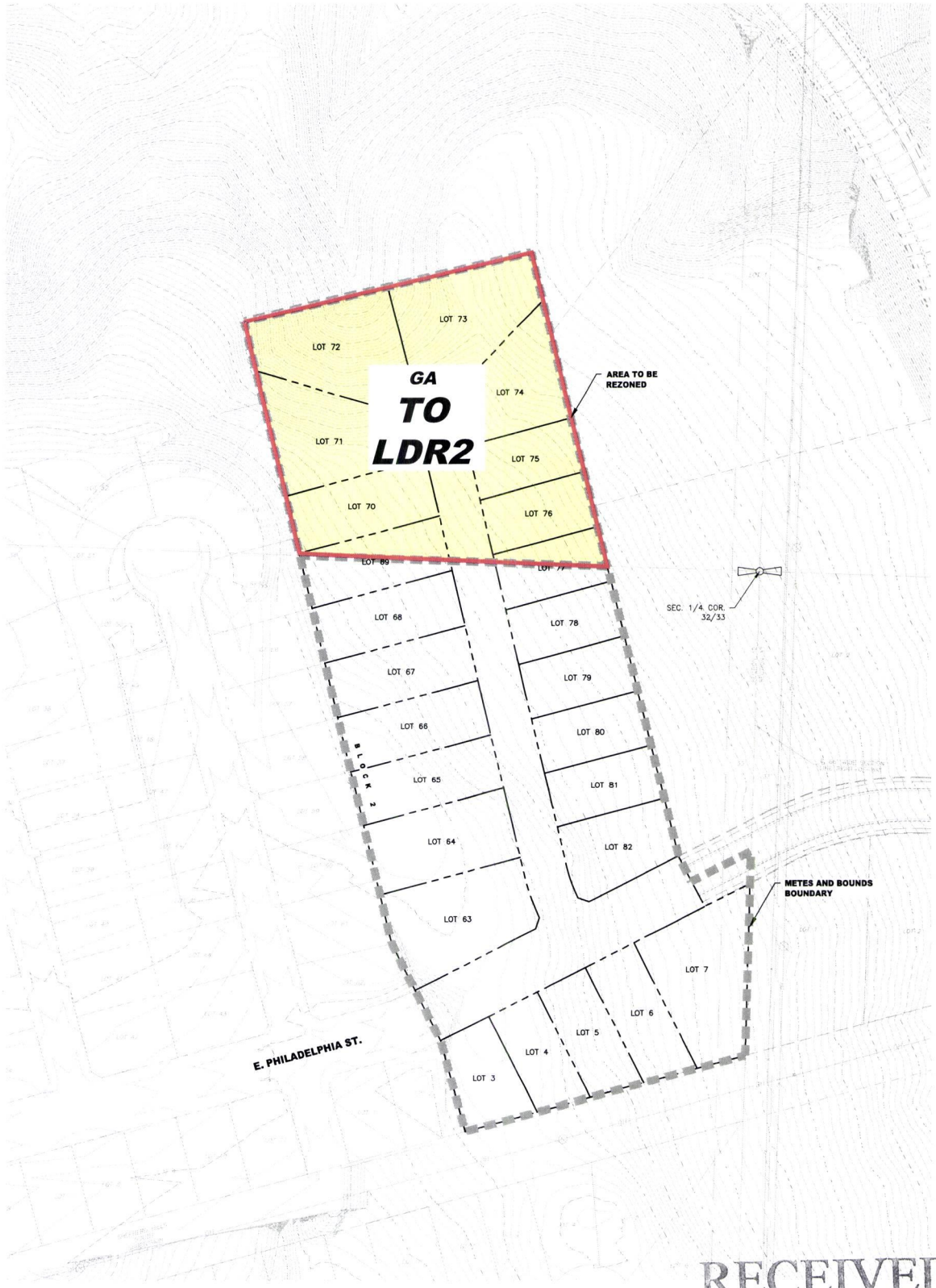


Case No. 21RZ004

Legal Description:

A portion of the SE1/4 NE1/4 Section 32, T2N, R8E, BHM, Rapid City, Pennington County, South Dakota, more fully described as follows: Commencing at the 1/4 corner of Sections 32 and 33, T2N, R8E, BHM, Rapid City, Pennington County, South Dakota being monumented by a set granite stone 18"x12"x10", thence N35°43'31"W, a distance of 469.51 feet to the point of beginning; Thence first course: S13°43'46"E, a distance of 385.56 feet; Thence second course: N87°55'36"W, a distance of 369.80 feet; Thence third course: N13°19'44"W, a distance of 287.34 feet; Thence fourth course: N76°40'16"E, a distance of 353.82 feet to the point of beginning



LEGEND
 LIGHT DENSITY RESIDENTIAL 2

RECEIVED

JAN 08 2021

RAPID CITY DEPARTMENT OF COMMUNITY DEVELOPMENT



628 1/2 6th Street, Suite 201, Rapid City, SD 57701
 Phone: (605) 791-5866 | Fax: (605) 791-5863
www.ktmengineers.com
 CIVIL ENGINEERING | LAND SURVEYING
 LAND PLANNING | PROJECT MANAGEMENT

REZONING EXHIBIT
SHEPHERD HILLS SUBDIVISION
 JANUARY, 2021

